



Jones Gillam Renz Architects

Address

730 N 9th St. 1881 Main St., Suite 301
Salina, KS 67401 Kansas City, MO 64108

Contact

jgr@jgrarchitects.com
(785) 827-0386

Web

jgrarchitects.com

ARCHITECT'S SUPPLEMENTAL INSTRUCTIONS

JONES GILLAM RENZ DOCUMENT JGR 710

PROJECT:	The Heritage at Abilene New Building, Restoration and Rehab Apartments Abilene, Texas	Report No.	Eight (8)
OWNER:	Overland Property Group Dan Maximuk 5345 W. 151st Terrace Leawood, KS 66224 913-396-6310	Date	May 10, 2024
CONTRACTOR:	MCP Group 3501 SW Fairlawn Rd. Topeka, KS 66614 785-273-3880	Architect's Proj No.	20-3065
		Contract For:	General Construction Mechanical, Electrical

The work shall be carried out in accordance with the following supplemental instructions issued in accordance with the Contract Documents without change in Contract Sum or Contract Time. Prior to proceeding in accordance with these instructions, indicate your acceptance of these instructions for minor change to the Work as consistent with the Contract Documents and return a copy to the Architect.

DESCRIPTION:

- 1) Building A - Provide Roof Hatch, Ladder and Ladder guard as detailed in the attached drawings.

Attachments:

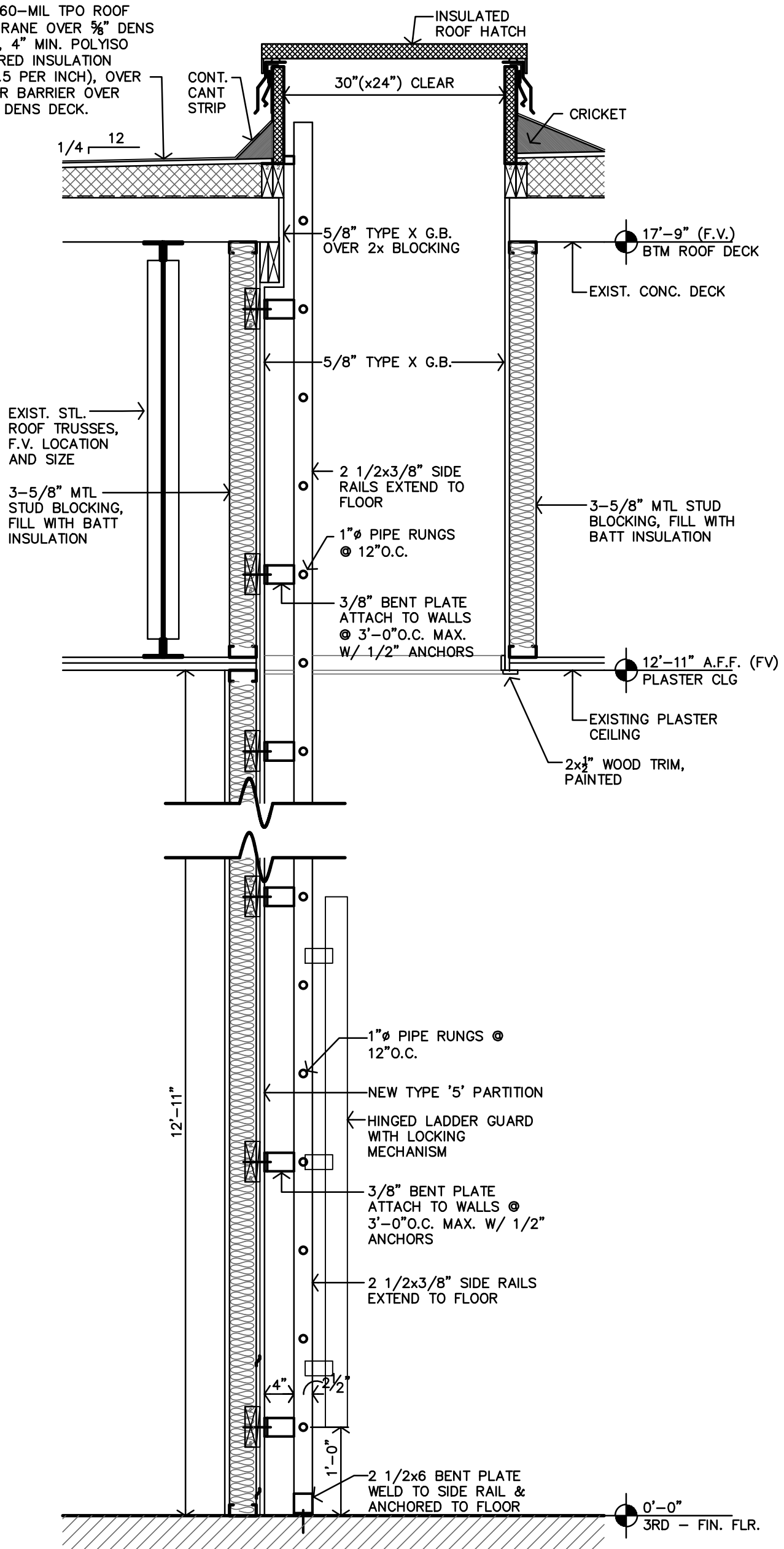
Revised Sheet AA7.3, Sheet ASI 8.1

Issued by: Jones Gillam Renz Architects 730 N. Ninth Street, Salina KS 67401
Maggie Gillam, Project Manager 785 827 0386 mgillam@jgrarchitects.com

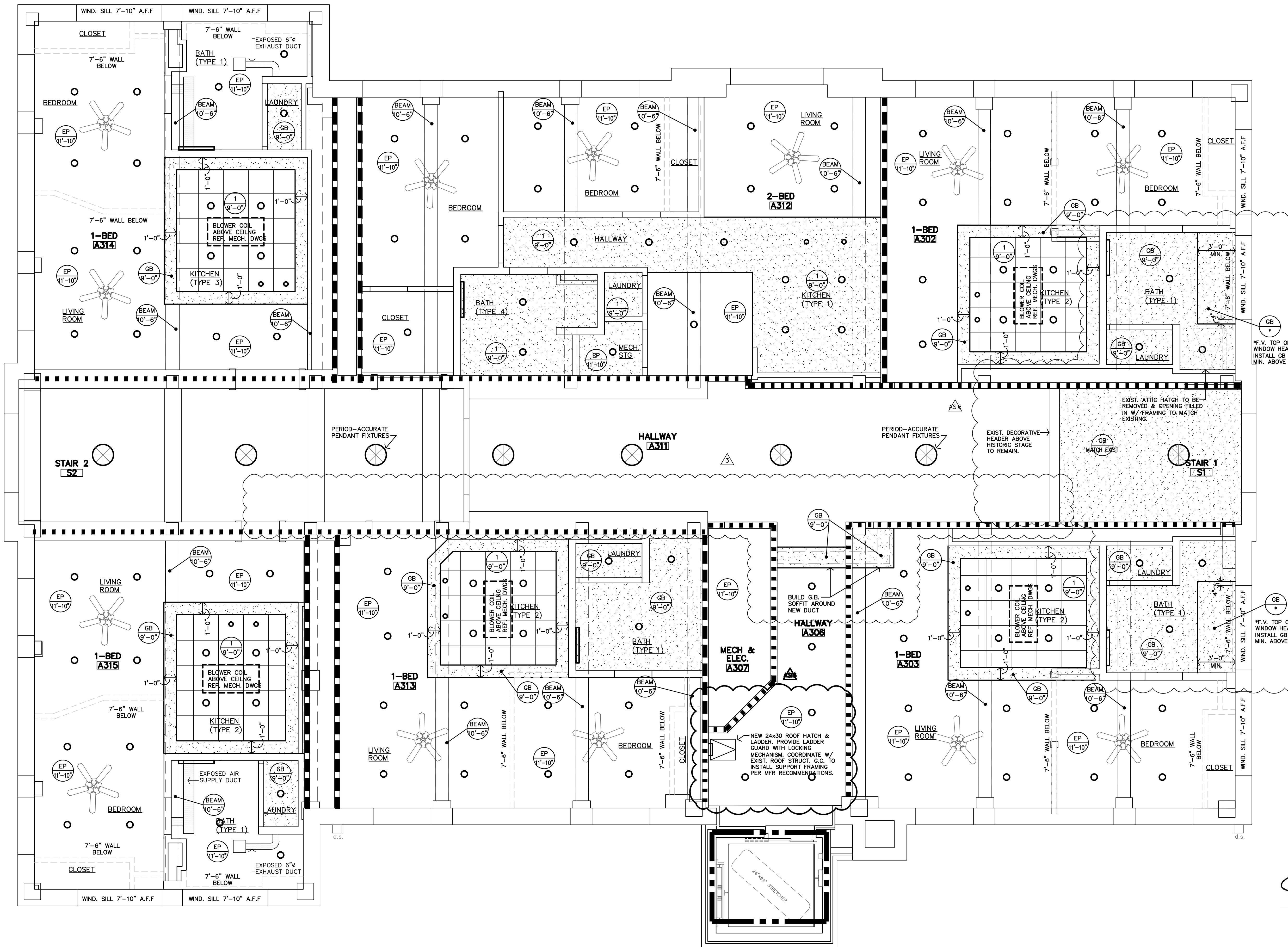
Copies to:

MCP Group - Eric Hubener, Will Hubener; OPG - Dan Maximuk; LST - John Lewis-Smith; Structural - Mike Falbe

NEW 60-MIL TPO ROOF
MEMBRANE OVER 5/8" DENS
DECK, 4" MIN. POLYISO
TAPERED INSULATION
(R-6.5 PER INCH), OVER
VAPOR BARRIER OVER
5/8" DENS DECK.



A **BUILDING A
ROOF HATCH/LADDER SECTION**
3/4"=1'-0"



REFLECTED CLG. PLAN NOTES

- CONTRACTOR SHALL COORDINATE CEILING LAYOUT WITH MECHANICAL AND ELECTRICAL FIXTURE LOCATIONS. NOTIFY ARCHITECT IMMEDIATELY OF ANY CONFLICT OR DISCREPANCY.
- MECHANICAL/ELECTRICAL FIXTURES @ RATED CEILINGS SHALL BE HUNG IN CONFORMANCE TO U.L. SYSTEM REQUIREMENTS.
- CEILING MOUNTED MECHANICAL EQUIPMENT AND SUSPENDED MECHANICAL EQUIPMENT MUST BE SUSPENDED DIRECTLY FROM THE STRUCTURE.
- WHERE SUSPENSION DEVICES, WIRES, RODS, ETC. PENETRATE CEILING GRID AND/OR TILE OR G.B. PENETRATIONS SHALL BE NEAT AND CLEANLY CUT. PENETRATION OPENING SHALL BE AS SMALL AS POSSIBLE. SEAL AT G.B.
- AT LAY-IN KITCHEN CEILING, CONTRACTOR IS RESPONSIBLE FOR LOCATING THE BLOWER COIL UNIT IN COORDINATION WITH THE LIGHTING & DUCTWORK, SO THEY THEY DO NOT CONFLICT WITH ONE ANOTHER.

--- LOW WALLS, BELOW 8'-0"
 --- NON-RATED WALLS
 - - - - - 1/2 HOUR FIRE PARTITION (CORRIDOR) W/ 20 MIN. OPENINGS
 - - - - - 1 HOUR FIRE PARTITION; BETWEEN DWELLING UNITS
 - - - - - 1 HOUR RATED WITH 60 min. OPENINGS

SEAL VOIDS AT TOPS OF WALLS AND PENETRATIONS WITH U.L. LISTED FIRE BATT INSULATION, PILLOWS, AND/OR FIRE SEALANT AS REQUIRED BY CONDITION. AT RATED WALLS.

CEILING TYPES	
REFER SPECIFICATIONS	
GB	GYP. BD (PAINTED)
1	2x2 SUSP. ACOUST. CLG.
ST	EXPOSED STRUCTURE
EP	EXIST. PLASTER (PAINTED)

1 CLG. TYPE
 8'-8" CLG. HEIGHT

Architects Planners Designers
 1722 Main Street
 P.O. Box 2828
 Salina, KS 67402
 jgr@jgarchitects.com



THE HERITAGE at ABILENE
 NEW BUILDING, RESTORATION & REHAB APARTMENTS
 ABILENE, TEXAS



REVISION:	
3-16-22	
3-18-24	
5-10-24	
DATE:	12-17-21
JOB:	20-3065
SHEET:	

BUILDING A



BUILDING A - THIRD FLOOR REFLECTED CEILING PLAN
 1/4"=1'-0"

AA7.3

COPYRIGHTED ©