



**Jones Gillam Renz Architects**

**Address**

730 N 9th St.  
Salina, KS 67401

1881 Main St., Suite 301  
Kansas City, MO 64108

**Contact**

jgr@jgrarchitects.com  
(785) 827-0386

**Web**

jgrarchitects.com

**NOTICE TO ALL CONTRACTORS AND SUB-CONTRACTORS**

**December 21, 2022**

**USD 305 Heartland Early Education, Kitchen Renovation & Classroom Remodel**

**Project No. 21-3177**

***Prebid Meeting Date: Wednesday, December 21, 2022 at 2:00 pm at building site, 700 Jupiter, Salina, KS***

**ADDENDUM NO. 1**

YOU ARE INSTRUCTED TO READ AND TO NOTE THE FOLLOWING DESCRIBED CHANGES, CORRECTIONS, CLARIFICATIONS, OMISSIONS, DELETIONS, ADDITIONS, APPROVALS, AND STATEMENTS PERTINENT TO THE CONTRACT AND CONSTRUCTION DOCUMENTS. THIS ADDENDUM IS A PART OF THE CONTRACT AND CONSTRUCTION DOCUMENTS AND SHALL GOVERN IN THE PERFORMANCE OF THE WORK.

***Bid Date: Tuesday, January 10, 2023 at 2:00 pm at JGR Architects, 730 N. Ninth St., Salina, KS***

**GENERAL**

1. Revised Invitation to Bid is included with this addendum – The bids will be opened and read aloud.

**ARCHITECTURAL – Specifications**

1. Section 10800 Toilet and Bath Accessories – Include American Specialties as an approved manufacturer for bidding purposes.

**MECHANICAL – Drawings**

1. Sheet M2 – Revised Sheet M2 is included with this addendum.

Receipt of this Addendum shall be noted on the Bid Form.

END OF ADDENDUM NO. 1

Attachments

Invitation to Bid  
Sheet M2

Project No. 21-3177

## INVITATION TO BID

Sealed Bids, will be received by Kris Upson, USD 305 Salina School District, Salina, Kansas, for the furnishing of all labor and materials as hereinafter specified for the remodeling of Heartland Early Education Kitchen Renovation and Classroom Remodel. **Bid shall be delivered to The USD 305 Operations Center, 1835 South Broadway, Salina, KS before Tuesday January 10, 2023 at 2:00 p.m.** at which time the bids will be opened and read aloud. Bids received after this time will not be accepted.

### 1. PROJECT SCOPE

- a. Kitchen and Dishwashing area Base Bid 1,700 s.f.
- b. Classroom Areas and restrooms Alternate Bids
- c. Floor: Kitchen/Dishwashing Epoxy Resin; Classrooms Carpet/LVT; Restrooms Porcelain Tile
- d. Wall/Roof Structure: Existing Steel/Deck, Existing TPO Roof (warranty to remain)
- e. Ceiling Finishes: Acoustical/Lay-in; Aluminum Grid at Kitchen/Dishwashing
- f. Wall Finishes: Fiberglass Reinforced Panel (FRP) at Kitchen/dishwashing.
- g. Demolition: Floor Finishes for new materials; Concrete subfloor (patch)
- h. Mechanical:  
Existing RTU/MUA to remain; Modification and New Devices per Drawings.  
Exhaust fans for restroom exhaust.
- i. Plumbing:  
Waste, Modified and Extend Existing for New Fixtures and Equipment  
Domestic Water; Modified and Extended; New Water Softener  
Water Heater; Existing Gas  
Tank Type Water Closets
- o. Electrical:  
Existing Electrical Service: Modified  
Existing Light Fixtures to be Replaced (LED); New/Modified Receptacles and Devices  
Fire Alarm; Modification Required
- p. Food Service Equipment:  
New and Reused Equipment and Fixtures  
In-Ground Fixtures to be Replaced Due to New Flooring  
**\*Food Service Equipment to be from Pre-Selected Vendor: Sunflower Restaurant Supply – Contact Phillip Schmidt, E-mail [phillips@sunflowersrs.com](mailto:phillips@sunflowersrs.com) Phone # (785) 823-6394.**

### 2. PRE-BID CONFERENCE

Pre-Bid Conference will be held on **Wednesday, December 21, 2022 at 2:00 p.m. at building site, 700 Jupiter Ave, Salina, KS.** Failure to attend may be grounds for rejection of bid.

### 3. COMPLETION TIME

Completion date for the project is to be bid in calendar days: To be Bid by Contractor and stated on the Bid Form. See Section 1019 Special Provisions for Anticipated Construction Schedule. All Aspects of this projects shall be phased to minimize disturbance of the daily schedule. Prior to construction, Materials shall be on site or assured delivery dates to minimize construction delays.

### 4. The GENERAL CONSTRUCTION CONTRACT will include General Construction, Mechanical, and Electrical Work combined into one Contract.

### 5. As a condition precedent to Contract Award, type of work completed and proposed Subcontractors will be carefully considered. Owner is not obligated to accept lowest or any other bid.

### 6. This Project is Subject to Federal Davis-Bacon Wage Rates. See information and forms contained in the Specifications. Contractor is responsible for all record keeping and presenting final documentation to the Government, Grant Agency, and Owner.

7. The Drawings, Specifications, and Contract Documents may be obtained by bona fide Prime Bidders (Mechanical and Electrical, and Subcontractors) from Jones Gillam Renz Architect, 730 North 9th Street, Salina, Kansas 67401, 785-827-0386 upon deposit of \$200.00 for one (1) set of General Construction, Mechanical and Electrical Drawings and Specifications.

Electronic Drawings and specifications will be available for review on the website at [www.jgrarchitects.com](http://www.jgrarchitects.com). **Mechanical, Plumbing and Electrical Subcontractors who are bidding from documents via website or plan room must contact the office of Jones Gillam Renz Architects, 785.827.0386 to register as an official Plan Holder.**

Those who submit prime bids may obtain refund by returning sets in good condition no more than one (1) week after bids have been opened. No refund of deposit will be made to Contractors not submitting a bid, unless all documents are returned in good condition five (5) days prior to time of receiving bids.

CONTRACT DOCUMENTS will be on file and may be examined at the following locations:

Jones Gillam Renz Architects, 730 North 9th Street, Salina, KS 67401, [www.jgrarchitects.com](http://www.jgrarchitects.com),  
Ph. 785-827-0386

KCNR LLC, <https://kcnr.net>, Ph. 316-263-0265

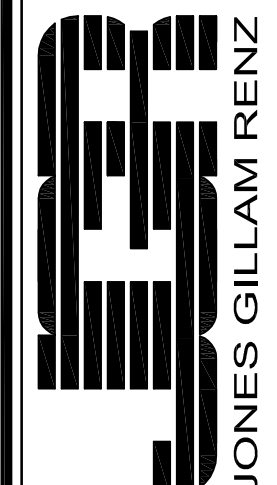
Dodge Construction Network, [www.construction.com](http://www.construction.com), Ph. 877-784-9556

Salina Blueprint and Micrographics, 209 S Santa Fe Ave., Salina, KS 67401, [www.salinablue.com](http://www.salinablue.com) ,  
Ph. 785-827-6182

8. **BID SECURITY in the amount of 5% of the bid must accompany each bid in accordance with INFORMATION FOR BIDDERS.**

BY ORDER OF:

Kris Upson, Director of Operations  
USD 305 Salina School District  
Salina, Kansas



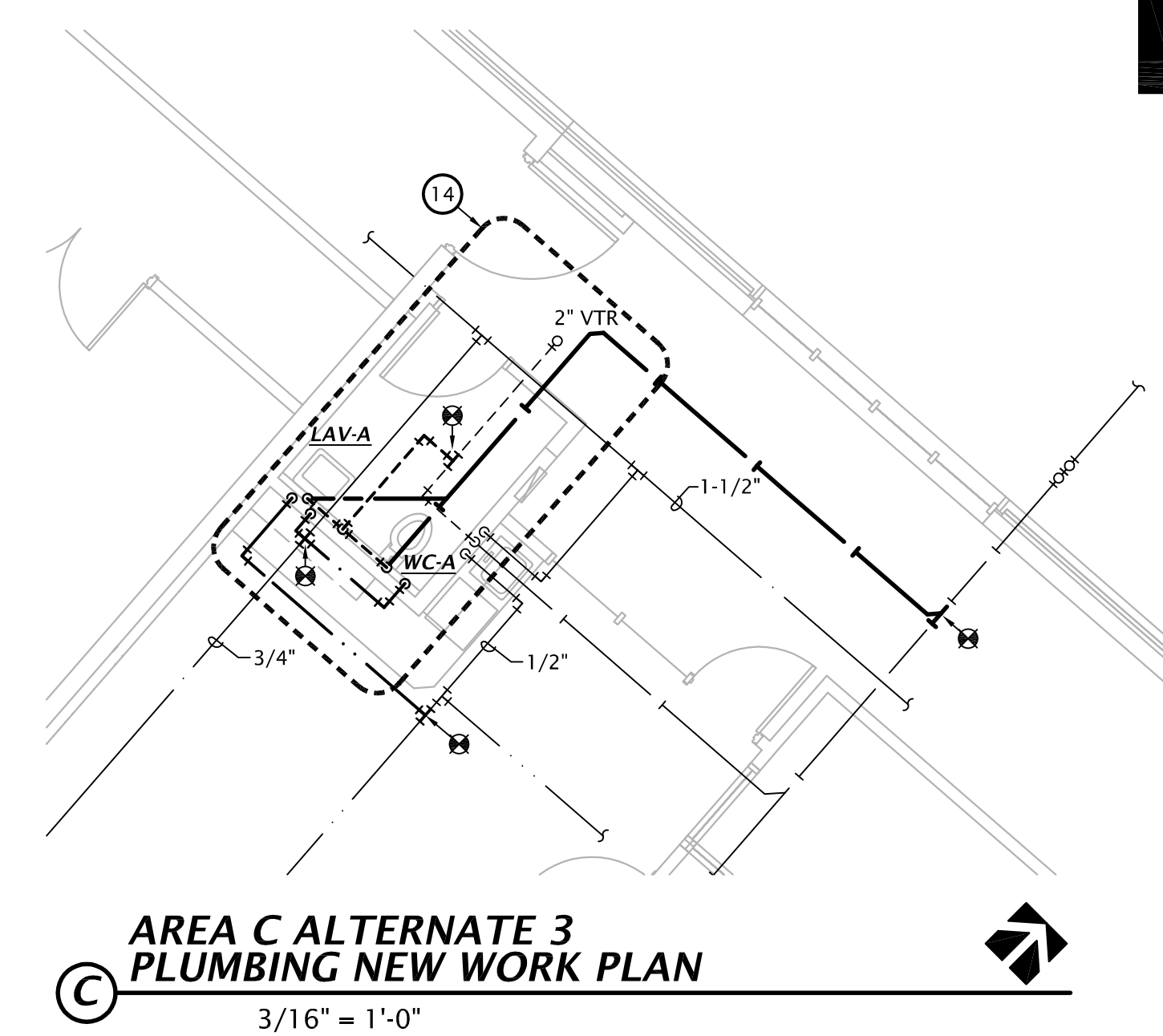
**HEARTLAND EARLY EDUCATION**  
**KITCHEN RENOVATION & CLASSROOM REMODEL**  
**SALINA, KANSAS**



REVISION:	
ADDENDUM 1	12-19-22
DATE:	08-11-2022
JOB:	21-3177
SHEET:	

**M2**

COPYRIGHTED ©



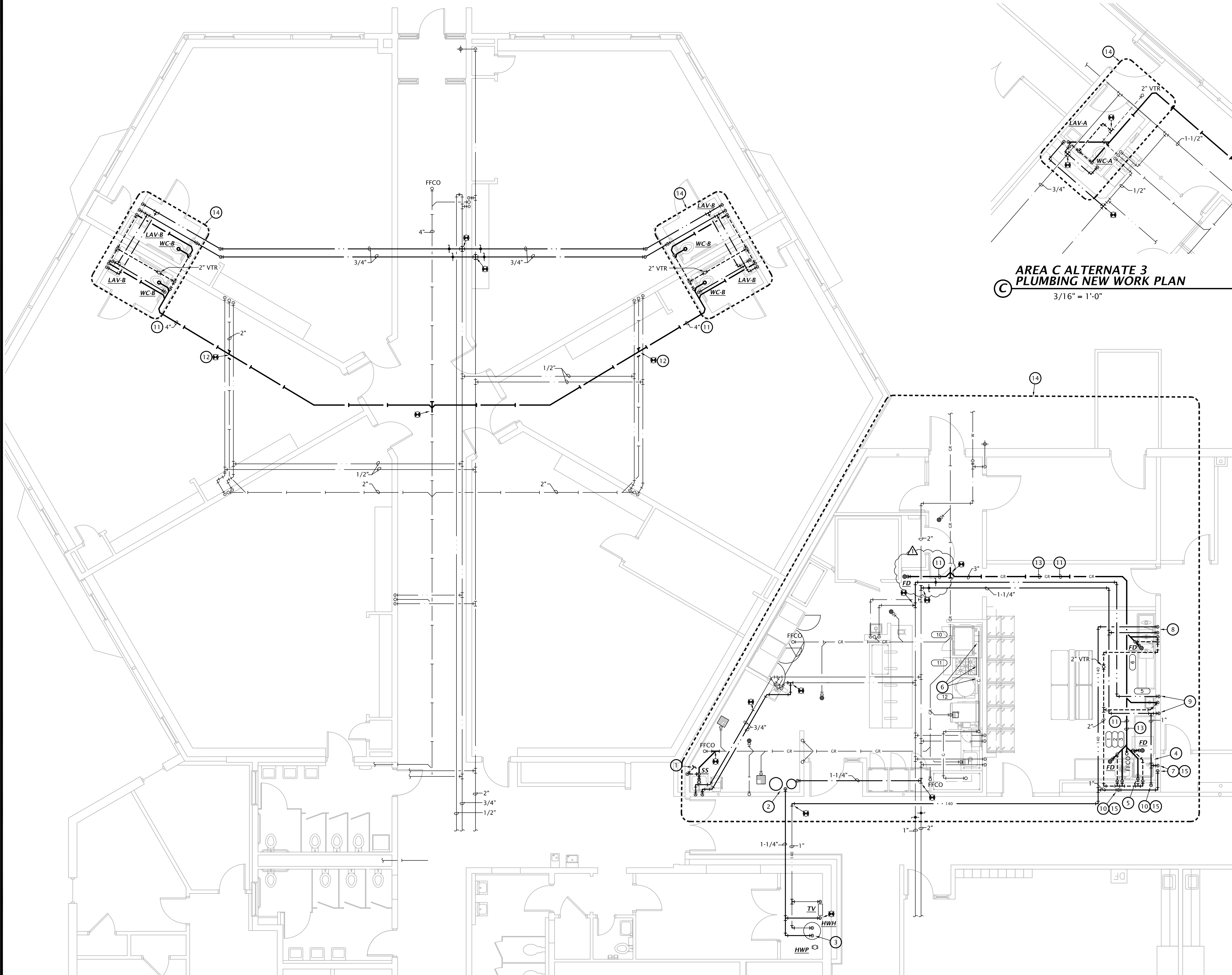
**AREA C ALTERNATE 3  
 PLUMBING NEW WORK PLAN**  
 3/16" = 1'-0"

**GENERAL PLUMBING NOTES**

- A. COORDINATE FIXTURE ROUGH-IN HEIGHTS WITH ARCHITECT . REFERENCE ARCHITECTURAL.
- B. ROUTE PIPING AS HIGH AS POSSIBLE TO MAXIMIZE AVAILABLE PLENUM SPACE THROUGHOUT RENOVATED AREA.
- C. SEE PLUMBING FIXTURE SCHEDULE FOR ROUGH-IN SIZES.
- FD FOOD SERVICE EQUIPMENT TAG. SEE FOOD SERVICE DRAWINGS FOR ROUGH-IN SIZES, EXACT ROUGH-IN LOCATIONS, AND ADDITIONAL WORK. COORDINATE INSTALLATION OF KITCHEN EQUIPMENT WITH KITCHEN EQUIPMENT SUPPLIER.

**PLAN NOTES BY SYMBOL**

- 1. CONNECT TO NEAREST EXISTING 2" OR LARGER VENT PIPING.
- 2. PROVIDE WATER SOFTENER SYSTEM EQUAL TO CULLIGAN MODEL HE1.25 12" DF INDOOR WITH 375lb BRINE TANK CAPABLE OF 18 GPM CONTINUOUS FLOW AT 15 PSI PRESSURE DROP AND 26.9 GPM PEAK FLOW AT 32.1 PSI LOSS. PROVIDE ISOLATION VALVE AT INLET AND OUTLET PIPING CONNECTIONS WITH FULL-SIZE BYPASS VALVE.
- 3. NEW COLD WATER CONNECTION TO EXISTING WATER HEATER. REMOVE PIPING TAKEN OUT OF SERVICE AND CAP.
- 4. ROUTE 1/2" CONDENSATE DRAIN FROM DISHWASHING EXHAUST HOOD TO FLOOR SINK.
- 5. PROVIDE TRAPPED 2" DRAIN WITH 1-1/2" VENT AND CONNECT DISHWASHER. COORDINATE EXACT REQUIREMENTS WITH KITCHEN EQUIPMENT PROVIDER.
- 6. MODIFY GAS PIPING AS REQUIRED TO MAKE CONNECTION TO NEW COOKING EQUIPMENT. COORDINATE EXACT REQUIREMENTS WITH KITCHEN EQUIPMENT SUPPLIER.
- 7. ROUTE 3/4" DOWN IN WALL TO DISHWASHER. PROVIDE HAMMER ARRESTOR. PROVIDE VACUUM BREAKER AS REQUIRED. COORDINATE EXACT REQUIREMENTS WITH KITCHEN EQUIPMENT SUPPLIER.
- 8. ROUTE 3/4" HW AND CW DOWN IN WALL AND CONNECT TO RELOCATED 3-COMPARTMENT SINK FAUCET. COORDINATE REQUIREMENTS WITH EQUIPMENT PROVIDED.
- 9. ROUTE 1/2" HW AND CW DOWN IN WALL AND CONNECT TO RELOCATED HAND SINK FAUCET. COORDINATE REQUIREMENTS WITH EQUIPMENT PROVIDED.
- 10. ROUTE 3/4" HW AND CW DOWN IN WALL AND CONNECT TO PRE-RINSE FAUCET ASSEMBLY. CONNECT 1/2" CW BRANCH TO DISPOSER WITH VACUUM BREAKER PROVIDED BY OTHERS. COORDINATE REQUIREMENTS WITH EQUIPMENT PROVIDED.
- 11. COORDINATE CUTTING AND PATCHING OF SLAB ON GRAD WITH G.C. FOR INSTALLATION OF NEW WASTE PIPING.
- 12. CONNECT EXISTING 2" WASTE PIPE TO NEW 4" PIPE AND CAP ABANDONED PIPE.
- 13. ALL NEW DRAIN PIPING SERVING DISHWASHING AREA SHALL BE CAST IRON.
- 14. MODIFY EXISTING FIRE SPRINKLER SYSTEM AS REQUIRED THROUGHOUT AREA OF REMODEL IN ACCORDANCE WITH NFPA 13.
- 15. IN DISHWASHING AREA, PROVIDE INDIVIDUAL SHUT-OFF VALVES FOR FIXTURE/EQUIPMENT EITHER ABOVE THE CEILING IN THE BRANCH PIPING OR AT PLUMBING ROUGH-IN AS THE PIPE LEASE THE WALL IN AN ACCESSIBLE LOCATION.



**AREA B ALTERNATES 1 & 2  
 PLUMBING NEW WORK PLAN**  
 3/16" = 1'-0"

**AREA A BASE BID  
 PLUMBING NEW WORK PLAN**  
 3/16" = 1'-0"