



Jones Gillam Renz Architects

Address

730 N 9th St.
Salina, KS 67401

1881 Main St., Suite 301
Kansas City, MO 64108

Contact

jgr@jgrarchitects.com
(785) 827-0386

Web

jgrarchitects.com

ARCHITECT'S SUPPLEMENTAL INSTRUCTIONS

JONES GILLAM RENZ DOCUMENT JGR 710

PROJECT:	Lee Lofts II, Building 2 Historic Bldg Rehabilitation Salina, KS	Report No.	Ten (10)
OWNER:	OPG Lee Lofts II Partners, LLC Dan Maximuk 254 N. Santa Fe Ave, Suite A Salina, KS 67401	Date	February 12, 2024
CONTRACTOR:	MCP Group 3501 SW Fairlawn Rd. Topeka, KS 66614	Architect's Proj No.	21-3120
		Contract For:	General Construction Mechanical, Electrical

The work shall be carried out in accordance with the following supplemental instructions issued in accordance with the Contract Documents without change in Contract Sum or Contract Time. Prior to proceeding in accordance with these instructions, indicate your acceptance of these instructions for minor change to the Work as consistent with the Contract Documents and return a copy to the Architect.

DESCRIPTION:

- 1) Unit 523 – bathroom Type 18 has been added. See attached sheet.
- 2) Historic Office #137 – see attached red-lined electrical sketch from contractor. The red lines (1/2") branch lines and J-boxes can be surface mounted and should be painted to match tin ceiling. The larger conduits and lines (shown in blue) will need to be concealed in a soffit. Architect's notes are in green. We are requesting that 3 of the 5 larger conduits be run through the Stair 141 in lieu of the Historic Office, to prevent additional soffits being built.

Attachments:

Sheet ASI 10.1 (8.5 x 11)
Electrical Sketch

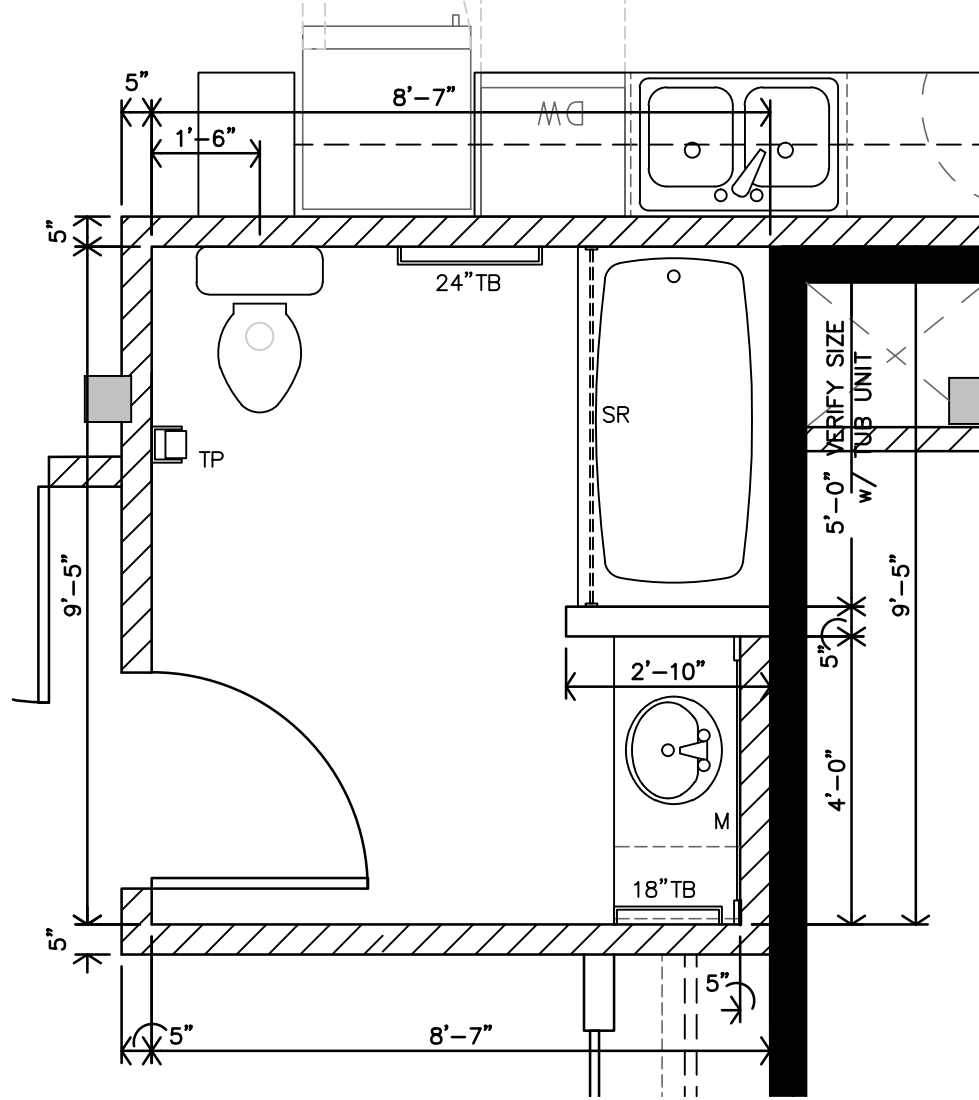
Issued by:

Jones Gillam Renz Architects PO Box 2928, Salina, KS 67402
Maggie Gillam, Project Architect 785-827-0386 mgillam@jgrarchitects.com

Copies to:

MCP Group - Eric Hubener
OPG - Dan Maximuk, Austin Kack
JGR Architects - Maggie Gillam
LST - John Lewis-Smith, Brian Ochs and Tim Tredway
Eng Cons - Brett Engelland

NOTE: REFERENCE DWG. A8.3 FOR ENLARGED BATH NOTES, KEYNOTES & LEGEND



A

TYPE 18 - ADAPTABLE ENLARGED BATH PLAN

3/8"=1'-0"

UNITS: 523

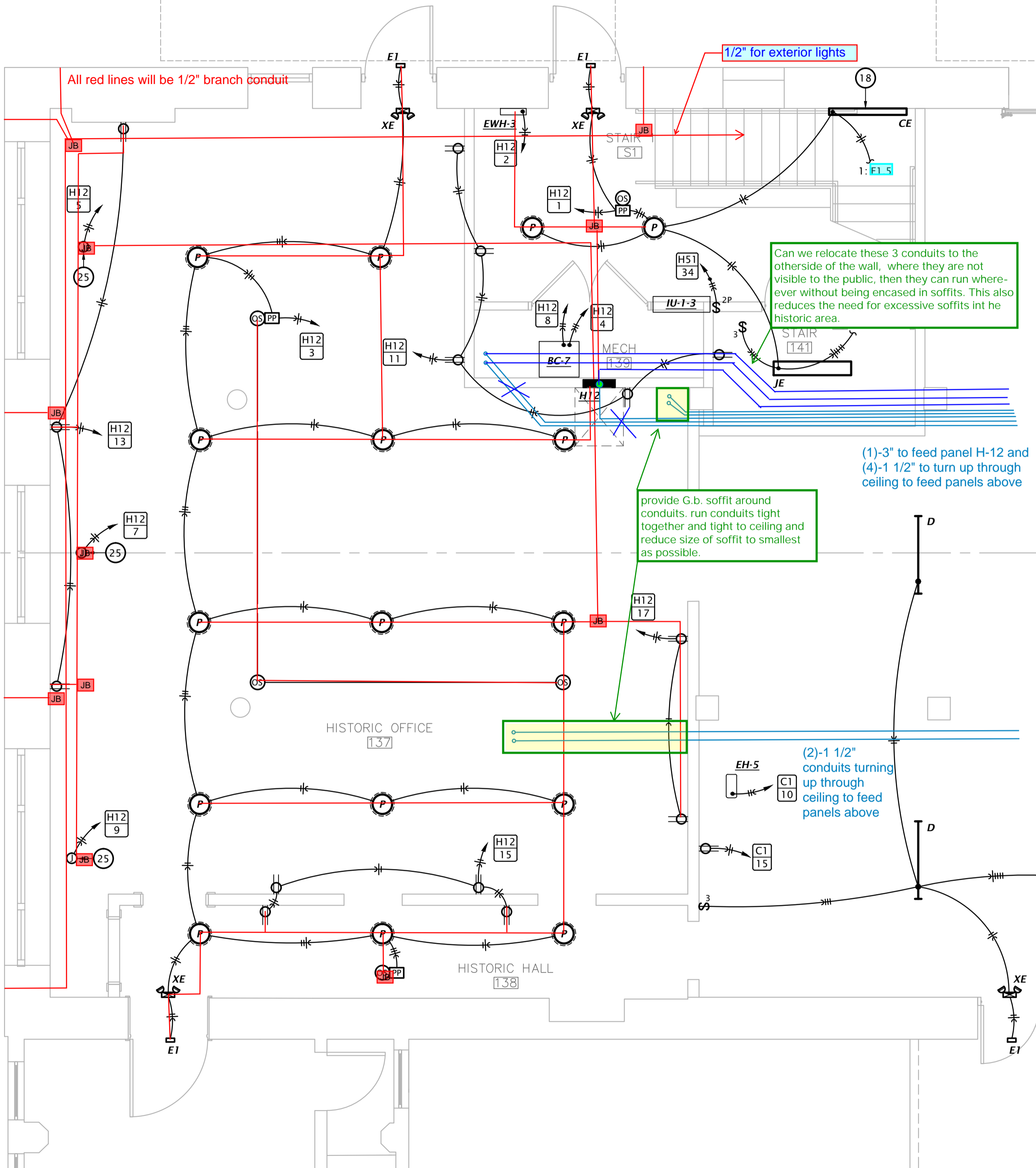
DATE: 2-2-2024

JOB #: 20-3120

ASI
10.1

**LEE LOFTS PHASE II BUILDING II
HISTORIC REHAB
SALINA, KANSAS**

JGR
JonesGillamRenz
730 N. Ninth St. 1881 Main Street, Suite 301
Salina, KS 67401 Kansas City, MO 64108
785.827.0386 jgr@jgrarchitects.com



All red lines will be 1/2" branch conduit

1/2" for exterior lights

Can we relocate these 3 conduits to the other side of the wall, where they are not visible to the public, then they can run wherever without being encased in soffits. This also reduces the need for excessive soffits in the historic area.

(1)-3" to feed panel H-12 and (4)-1 1/2" to turn up through ceiling to feed panels above

provide G.b. soffit around conduits. run conduits tight together and tight to ceiling and reduce size of soffit to smallest as possible.

(2)-1 1/2" conduits turning up through ceiling to feed panels above

1 WEST FIRST FLOOR ELECTRICAL PLAN
1/4" = 1'-0"