



**Jones Gillam Renz Architects**

**Address**

730 N 9th St. 1881 Main St., Suite 301  
Salina, KS 67401 Kansas City, MO 64108

**Contact**

jgr@jgrarchitects.com  
(785) 827-0386

**Web**

jgrarchitects.com

**ARCHITECT'S SUPPLEMENTAL INSTRUCTIONS**

JONES GILLAM RENZ DOCUMENT JGR 710

---

<b>PROJECT:</b>	<b>Lee Lofts II, Building 2</b> Historic Bldg Rehabilitation Salina, KS	<b>Report No.</b>	<b>Twelve (12)</b>
<b>OWNER:</b>	<b>OPG Lee Lofts II Partners, LLC</b> Dan Maximuk 254 N. Santa Fe Ave, Suite A Salina, KS 67401	<b>Date</b>	<b>August 14, 2024</b>
<b>CONTRACTOR:</b>	<b>MCP Group</b> 3501 SW Fairlawn Rd. Topeka, KS 66614	<b>Architect's Proj No.</b>	<b>21-3120</b>
		<b>Contract For:</b>	General Construction Mechanical, Electrical

---

The work shall be carried out in accordance with the following supplemental instructions issued in accordance with the Contract Documents without change in Contract Sum or Contract Time. Prior to proceeding in accordance with these instructions, indicate your acceptance of these instructions for minor change to the Work as consistent with the Contract Documents and return a copy to the Architect.

**DESCRIPTION:**

Changes pertaining to lighting alterations and revisions at the North Courtyard, between buildings 1 & 2.

- a. Install strand lighting throughout the courtyard. Attach to the underside of the existing trusses. See attached, which indicates the location and pattern of the light strands. Light strands shall be: PLT Premium Spec, 330 ft. Patio Stringer, with 165 Suspended Medium Base Sockets, black wire, 24" socket spacing, no end plugs (PLT-305127). Or approved equal.
- b. Install all lamps: LED S12 2w maximum lamps.
- c. Provide (2) duplex, GFI outlets with weatherproof/in-use covers mounted under the truss, where shown on the attached drawing, for connection to strand lights.
- d. Provide a new 2-pole lighting contactor wired in parallel with the lighting contactor shown on detail 1:E6.3, of the electrical drawings, so that it is controlled by the same photocell.
- e. Circuit (2) string light receptacle circuits thru the new lighting contactor and derive power from Panel H01 spare 20/1 circuit breakers. Circuit conductors shall be 2#10,#10G to compensate for voltage drop.
- f. Eliminate any and all wall pack lights scheduled to be installed within/underneath the same area as the strand lighting, along the north side of the Building 2.
- g. Cap any existing wall packs located within/underneath the same area as the strand lighting, along the south wall of Building 1.

---

**Attachments:**

Courtyard Strand Lighting Sketch

---

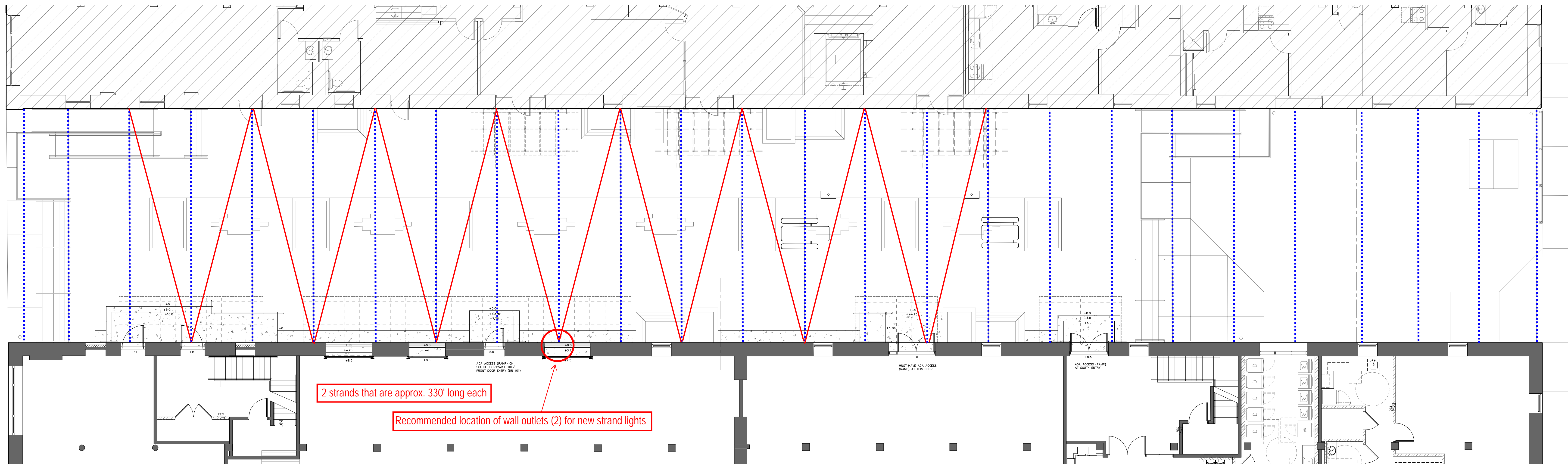
**Issued by:**

Jones Gillam Renz Architects PO Box 2928, Salina, KS 67402  
Maggie Gillam, Project Architect 785-827-0386 mgillam@jgrarchitects.com

---

**Copies to:**

MCP Group - Eric Hubener  
OPG - Dan Maximuk, Austin Kack  
JGR Architects - Maggie Gillam  
LST - John Lewis-Smith, Brian Ochs and Tim Tredway  
Eng Cons - Brett Engelland



2 strands that are approx. 330' long each

Recommended location of wall outlets (2) for new strand lights