



## Jones Gillam Renz Architects

### Address

730 N 9th St.  
Salina, KS 67401

1881 Main St., Suite 301  
Kansas City, MO 64108

### Contact

jgr@jgrarchitects.com  
(785) 827-0386

### Web

jgrarchitects.com

## ARCHITECT'S SUPPLEMENTAL INSTRUCTIONS

JONES GILLAM RENZ DOCUMENT JGR 710

<b>PROJECT:</b>	<b>Lee Lofts II, Building 2</b> Historic Bldg Rehabilitation Salina, KS	<b>Report No.</b>	<b>Five (5)</b>
<b>OWNER:</b>	<b>OPG Lee Lofts II Partners, LLC</b> Dan Maximuk 254 N. Santa Fe Ave, Suite A Salina, KS 67401	<b>Date</b>	<b>Sept. 14, 2023</b>
<b>CONTRACTOR:</b>	<b>MCP Group</b> 3501 SW Fairlawn Rd. Topeka, KS 66614	<b>Architect's Proj No.</b>	<b>21-3120</b>
		<b>Contract For:</b>	General Construction Mechanical, Electrical

The work shall be carried out in accordance with the following supplemental instructions issued in accordance with the Contract Documents without change in Contract Sum or Contract Time. Prior to proceeding in accordance with these instructions, indicate your acceptance of these instructions for minor change to the Work as consistent with the Contract Documents and return a copy to the Architect.

### DESCRIPTION:

- 1) Reference attached revised Sheet E6.3. Panel Schedule Notes have been corrected.
- 2) Structural Engineer has issued a detail for the reinforcing required at the new exterior wall footings, in the basement. See attached.

### Attachments:

Revised Sheet E6.3  
Structural Detail

### Issued by:

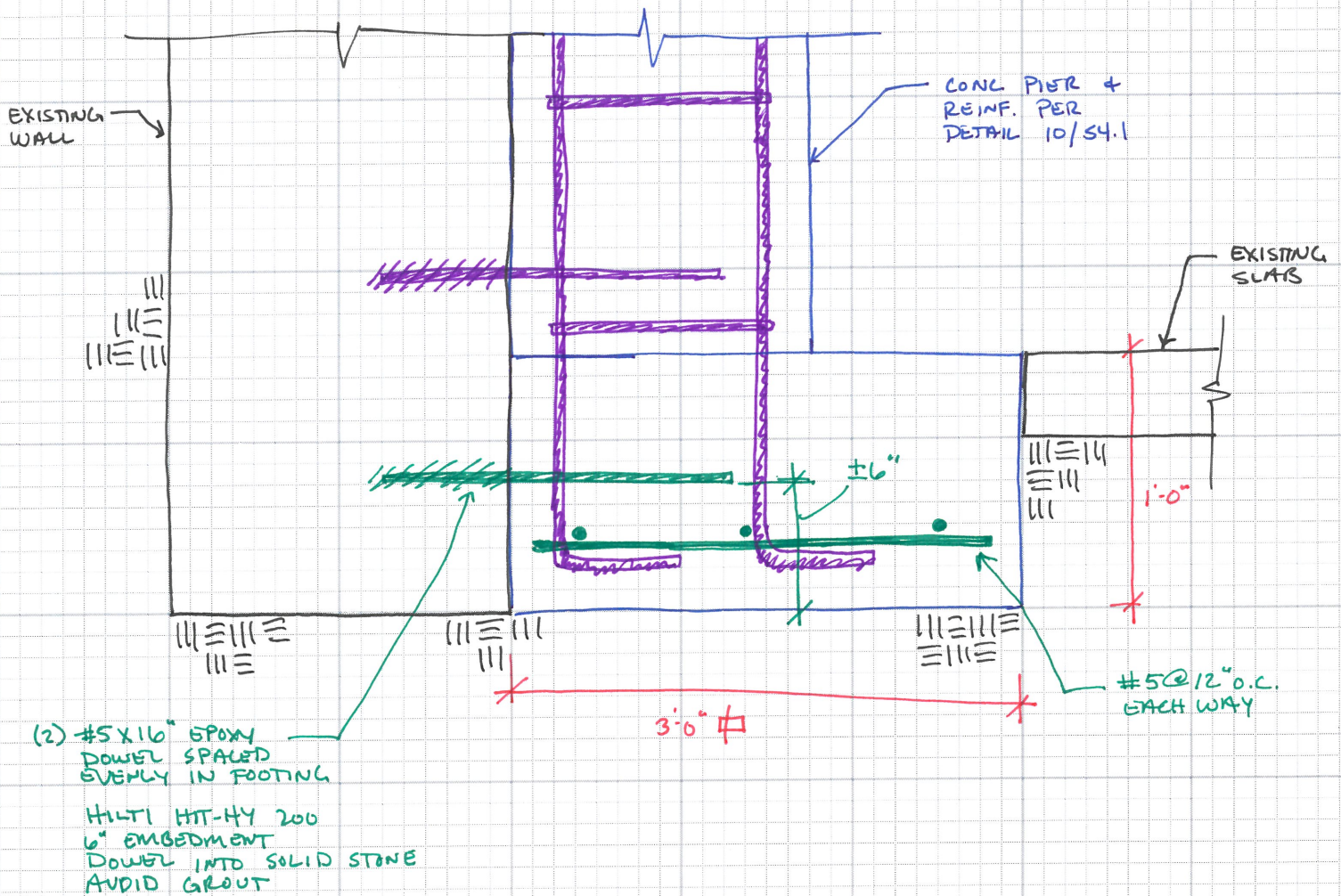
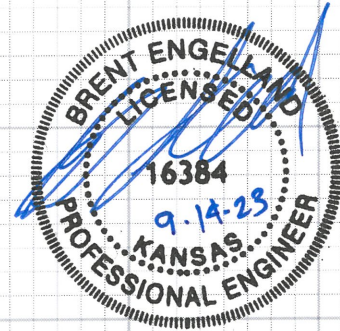
Jones Gillam Renz Architects PO Box 2928, Salina, KS 67402  
Maggie Gillam, Project Architect 785-827-0386

mgillam@jgrarchitects.com

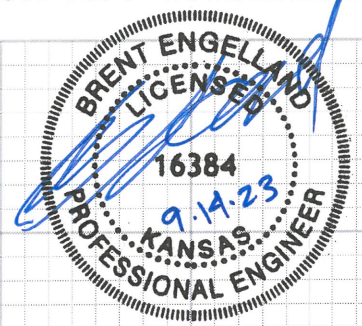
### Copies to:

MCP Group - Eric Hubener  
OPG - Dan Maximuk, Austin Kack  
JGR Architects - Maggie Gillam  
LST - John Lewis-Smith  
Eng Cons - Brett Engelland

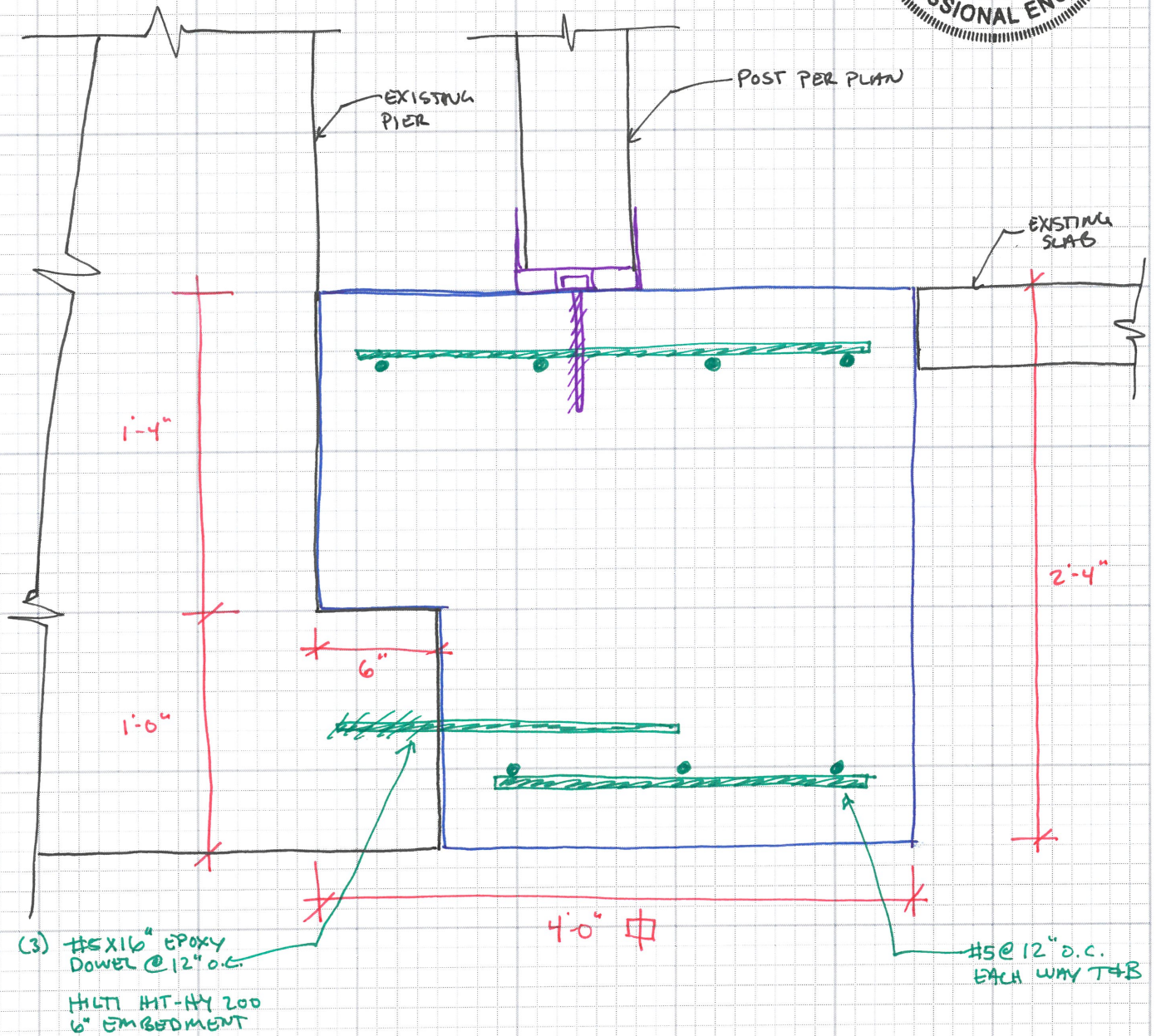
## EXTERIOR WALL FOOTING



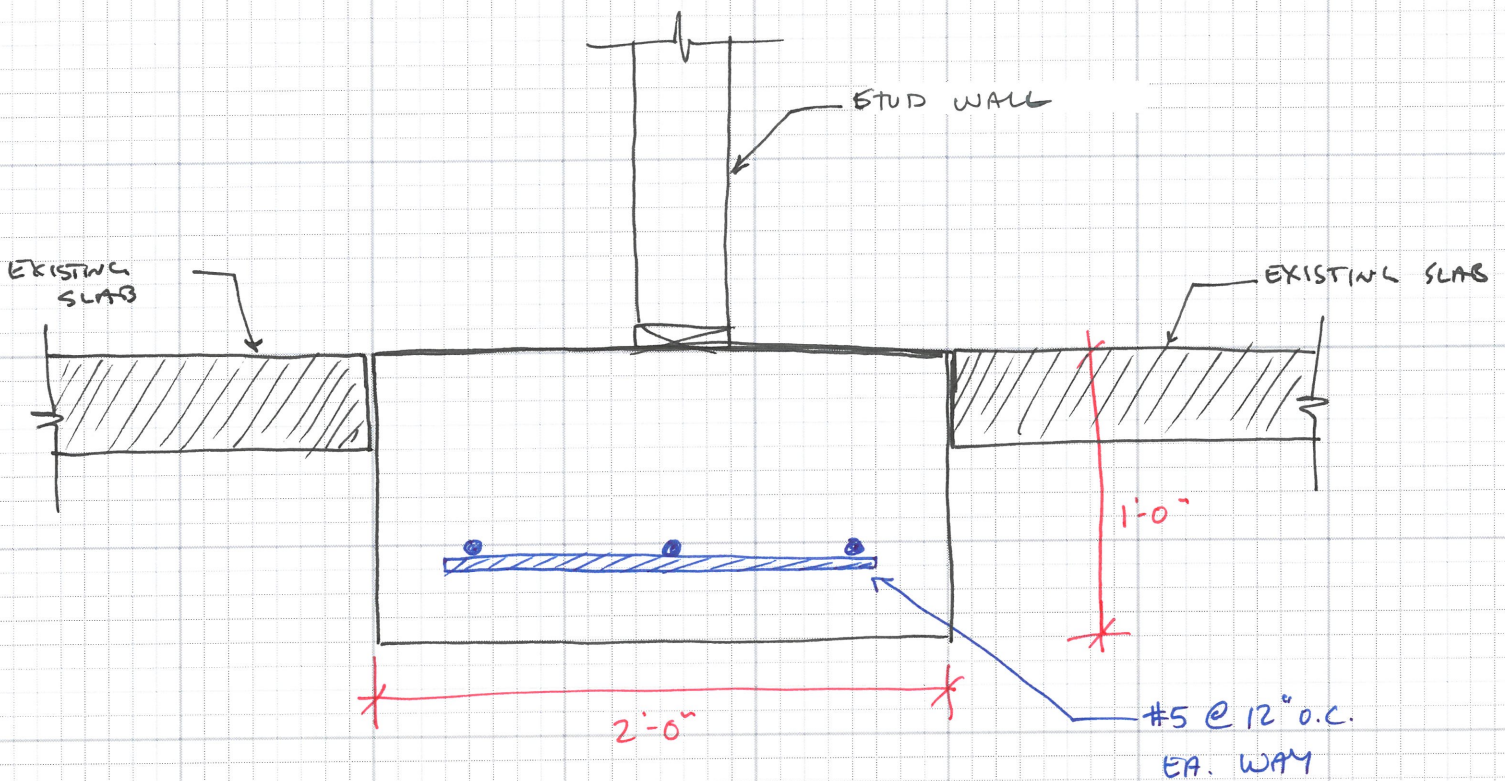
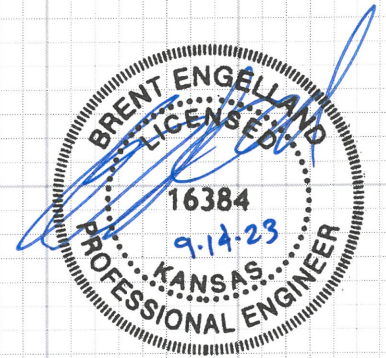




INTERIOR COLUMNS







LIGHT FIXTURE SCHEDULE								
MARK	MANUFACTURER	MODEL NUMBER	LAMP / LED DATA		BALLAST/DRIVER	MOUNTING	FINISH	DESCRIPTION
			LUMENS	COLOR				
A	HALO	SMD6R12930WH	1,200	3000°K	PHASE DIMMING	SURFACE	WHITE	6"Ø SURFACE MOUNT DOWNLIGHT WITH ACRYLIC LENS; 90 CRI
B	SEAGULL	15030EN-829	(2) 10W LED A19	3000°K	PHASE DIMMING LAMPS	SURFACE	BRONZE	52" DIAMETER CEILING FAN WITH LED LIGHT KIT
CE	H.E. WILLIAMS	WMA-4-L80/835-AF-EM/10W-DIM-UNV	8,000	3500°K	0-10V DIMMING	SURFACE WALL	WHITE	4" ARCHITECTURAL WALL BRACKET UP/DOWN LIGHT WITH FROSTED ACRYLIC LENS AND 10W EMERGENCY BATTERY
D	METALUX	4SNLED-LD5-56SL-LW-UNV-L830-CD1	5,900	3500°K	0-10V DIMMING	SURFACE	WHITE	4" LED STRIP WITH FROSTED LENS, WIDE DISTRIBUTION
DE	METALUX	4SNLED-LD5-56SL-LW-UNV-EL14W-L830-CD1	5,900	3500°K	0-10V DIMMING	SURFACE	WHITE	4" LED STRIP WITH FROSTED LENS, WIDE DISTRIBUTION WITH 14W EMERGENCY BATTERY
E	SURE-LITES	SEL25SD	---	WHITE	N/A	WALL AT 7"-6" AFF	WHITE	TWIN HEAD POLYCARBONATE EMERGENCY LIGHT
E1	MULE	EOE-BB-10L3-B-DG	(2) 10W LED A19	WHITE	N/A	ON WALL ABOVE DOOR	BRONZE	DIE-CAST ALUMINUM EMERGENCY LIGHT WITH POLYCARBONATE LENS, INTEGRAL BATTERY
F	CAPITAL LIGHTING	PORTMAN SKU 148631MB-537	(3) 9.5W LED A19	3000°K	N/A	WALL AT 7"-0"	BURNT SIENNA	3-LAMP LED VANITY LIGHT
G	(BY OWNER)	(BY OWNER)	--	3000°K	FIXED OUTPUT	PENDANT	(BY OWNER)	DECORATIVE PENDANT SELECTED BY OWNER, PROVIDED AND INSTALLED BY E.C.
H	H.E. WILLIAMS	AX2D-4-L33/835-S-AC/D48-DIM-UNV	3,300	3,500°K	0-10V DIMMING	SURFACE	MATTE ALUMINUM	4" DIRECT ARCHITECTURAL SUSPENDED, EXTRUDED ALUMINUM NARROW CHANNEL WITH FROSTED ACRYLIC LENS
JE	H.E. WILLIAMS	ASM-4-L46/835-S-5-A-EM/10WLP-DRV-UNV	4,600	3500°K	FIXED OUTPUT	SURFACE	WHITE	4" ARCHITECTURAL SURFACE MOUNT WITH RIBBED ACRYLIC DIFFUSER, DIE-FORMED ALUMINUM HOUSING AND 10W EMERGENCY BATTERY
K	H.E. WILLIAMS	WMA-2-L20/835-AF-DIM-UNNV	2,000	3500°K	0-10V DIMMING	SURFACE WALL	WHITE	2" ARCHITECTURAL WALL BRACKET UP/DOWN LIGHT WITH FROSTED ACRYLIC LENS
M	H.E. WILLIAMS	96-4-L40/835-HIAFR-WET/1-DRV-UNV	4,000	3500°K	FIXED OUTPUT DRIVER	WALL AT 7"-6" AFF (TO BOTTOM)	WHITE	4" FULLY ENCLOSED AND GASKETED INDUSTRIAL FIXTURE WITH FROSTED, RIBBED, IMPACT-RESISTANT ACRYLIC LEN
P	REJUVENATION	SEE DESCRIPTION	990	2700°K	FIXED OUTPUT DRIVER	PENDANT	OLD BRASS	HOLLYWOOD 6" FITTER LED PENDANT WITH ART DECO WEDDING CAKE GLOBE SHADE
Q	INSIGHT LIGHTING	MQ2-50-40K-7"UP/100"DN-WM2-6-INT-TBL-VS	3,280 UP 2,800 DN	4000°K	FIXED OUTPUT DRIVER	WALL AT 12'-0" AFF (FIRST FLOOR)	BLACK	DIE-CAST DIRECTIONAL FACADE LIGHT, 6" ARM, 7" NARROW UPLIGHT, 100" WIDE FLOOD DOWNLIGHT, CUTOFF VISOR
R1	MCGRAW-EDISON	GWC-AF-01-LED-E1-T2-BK-800	5,000	4000°K	FIXED OUTPUT DRIVER	WALL AT 12'-0" AFF (FIRST FLOOR)	BLACK	DIE-CAST WALL PACK, TYPE II DISTRIBUTION
R2	MCGRAW-EDISON	GWC-AF-01-LED-E1-T3-BK-800	5,000	4000°K	FIXED OUTPUT DRIVER	WALL AT 12'-0" AFF (FIRST FLOOR)	BLACK	DIE-CAST WALL PACK, TYPE III DISTRIBUTION
X1	MULE	MXBRU-SD	---	RED	N/A	CEILING/WALL/END	WHITE	SINGLE FACE POLYCARBONATE LED EXIT
X2	MULE	MXBRU-SD	---	RED	N/A	CEILING/END	WHITE	DOUBLE FACED POLYCARBONATE LED EXIT
XE	MULE	SQC-LED-1-R-WW-SD	---	RED WHITE	N/A	CEILING/WALL	WHITE	SINGLE FACE COMINATION POLYCARBONATE EXIT SIGN/TWIN HEAD EMERGENCY LIGHT

GENERAL:

- All interior LED fixtures shall be min. 80 CRI.
- All exterior LED fixtures shall be 4000°K corrected color temperature, min. 70 CRI.
- All light fixtures shall be provided with universal drivers capable of operating at 120V or 208V UNO.
- All LED fixtures shall adhere to LM79 and LM80 standards.

NOTES:

- Fixture shall have self-diagnostic/self-testing electronics.
- Provide with emergency battery integral charger.
- Fixture shall be capable of operation in temperatures ranging from -4°F through 104°F.
- Fixture/lamps shall be Energy Star rated.
- U.L. listed for 'wet location'.
- Provide fixture with 7" arm and 20' square, steel pole. See detail 2:E1.0 for more information.
- Fixture/pole assembly shall be rated for 100 mph wind loads. Provide with vibration damper per manufacturer's recommendations.
- Provide fixture with integral emergency battery pack to operate fixture at 1300 lumen output for 90 minutes upon loss of normal power.
- Suspend fixture using aircraft cable with bottom at 10'-0". Provide fixtures with straight cord and quick connect harness.

Panel Designation: (APT #)				Mounting: Recessed Flush			
Location: 1 BR APARTMENT UNIT				Bus Amps: 125			
Voltage: 208/120V-1Ph-3W				MCB Amps: MLO			
Enclosure: NEMA 1				Other: 22 KAIC Series Rated			
Circuit #	Load Description	Conductors	C/B Size	C/B Size	Conductors	Load Description	Circuit #
2	1 DISPOSAL	2# 12, # 12G, 1/2" C	15 / 1	20 / 1	2# 12, # 12G, 1/2" C	KITCHEN/LIVING RM LIGHTS	2
2	3 DISHWASHER	2# 12, # 12G, 1/2" C	15 / 1	50 / 2	3# 6, # 10G, 1" C	RANGE	4
6	2 5 HOOD/MICROWAVE	2# 12, # 12G, 1/2" C	15 / 1				6
2	7 REFRIGERATOR	2# 12, # 12G, 1/2" C	15 / 1	30 / 2	2# 10, # 10G, 1/2" C	WATER HEATER	8
2	9 COUNTER TOP RCPTS	2# 12, # 12G, 1/2" C	20 / 1				10
2	11 COUNTER TOP RCPTS	2# 12, # 12G, 1/2" C	20 / 1	-- / 2	2# 12, # 12G, 1/2" C	CONDENSING UNIT	12
1	13 LIVING ROOM RCPTS	2# 12, # 12G, 1/2" C	20 / 1				14
	15 BATHROOM	2# 12, # 12G, 1/2" C	20 / 1	-- / 2	SEE NOTE 5	BLOWER COIL ELECTRIC HEAT	16
1	17 BEDROOM	2# 12, # 12G, 1/2" C	20 / 1				18
	19 SPACE ONLY	--	--	--	--	SPACE ONLY	20
	21 SPACE ONLY	--	--	--	--	SPACE ONLY	22
	23 SPACE ONLY	--	--	--	--	SPACE ONLY	24

Panel Designation: (APT #)				Mounting: Recessed Flush			
Location: 2BR/3BR APARTMENT UNIT				Bus Amps: 125			
Voltage: 208/120V-1Ph-3W				MCB Amps: MLO			
Enclosure: NEMA 1				Other: 22 KAIC Series Rated			
Circuit #	Load Description	Conductors	C/B Size	C/B Size	Conductors	Load Description	Circuit #
2	1 DISPOSAL	2# 12, # 12G, 1/2" C	15 / 1	20 / 1	2# 12, # 12G, 1/2" C	KITCHEN/LIVING RM LIGHTS	2
2	3 DISHWASHER	2# 12, # 12G, 1/2" C	15 / 1	50 / 2	3# 6, # 10G, 1" C	RANGE	4
6	2 5 HOOD/MICROWAVE	2# 12, # 12G, 1/2" C	15 / 1				6
2	7 REFRIGERATOR	2# 12, # 12G, 1/2" C	15 / 1	30 / 2	2# 10, # 10G, 1/2" C	WATER HEATER	8
2	9 COUNTER TOP RCPTS	2# 12, # 12G, 1/2" C	20 / 1				10
2	11 COUNTER TOP RCPTS	2# 12, # 12G, 1/2" C	20 / 1	-- / 2	SEE NOTE 4	CONDENSING UNIT	12
1	13 LIVING ROOM RCPTS	2# 12, # 12G, 1/2" C	20 / 1				14
	15 BATHROOM#1	2# 12, # 12G, 1/2" C	20 / 1	-- / 2	SEE NOTE 5	BLOWER COIL	16
1	17 BEDROOM#1	2# 12, # 12G, 1/2" C	20 / 1				18
	19 BEDROOM#2	2# 12, # 12G, 1/2" C	20 / 1	--	--	SPACE ONLY	20
5	21 BEDROOM#3	2# 12, # 12G, 1/2" C	20 / 1	--	--	SPACE ONLY	22
	23 BATHROOM#2	2# 12, # 12G, 1/2" C	20 / 1	--	--	SPACE ONLY	24

IST Consulting Engineers, PA

4809 Via Du Lac Place, Suite 201  
Manhattan, KS 66503  
785.827.8342

125 S. Washington, Suite 150  
Wichita  
Kansas 67202  
316.265.0696

www.ISTengneers.com  
mail@ISTengneers.com

Project 22059

FEBRUARY 2023

NOTES:

A. WHERE ELECTRICAL BOXES ARE INSTALLED IN FIRE RATED ASSEMBLIES (CEILINGS, WALLS, ETC.), ENSURE THAT THE INSTALLATION OF BOXES MAINTAINS FIRE RATINGS. SUBMIT PRODUCT DATA AND U.L. LISTINGS TO DEMONSTRATE SUITABILITY OF FIRE RATING PRODUCTS.

B. THE USE OF NM CABLE IS PROHIBITED. REFER TO SPECIFICATION 260519 FOR APPROVED WIRING METHODS.

C. ALL RECEPTACLES IN APARTMENT UNITS SHALL BE TAMPER-RESISTANT TYPE.

- # PANEL SCHEDULE NOTES BY SYMBOL
1. CIRCUIT SHALL BE PROTECTED BY AFCI TYPE BREAKER.

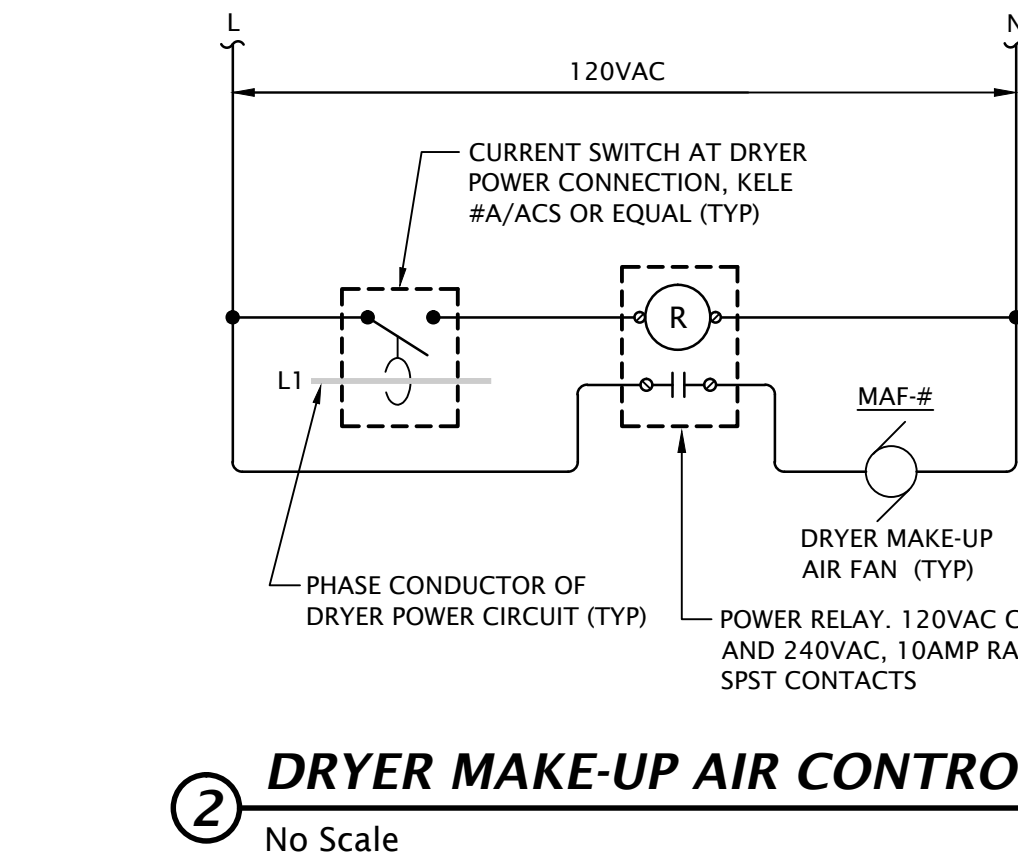
2. CIRCUIT SHALL BE PROTECTED BY COMBINATION AFCI/GFCI TYPE BREAKER.

3. PROVIDE BREAKERS AND CIRCUITRY FOR BLOWER COILS AS FOLLOWS:
  - BC-1: APTS #224, #225, #226, #227, #228, #229, #230, #231, #232, #324, #325, #326, #327, #328, #329, #330, #331, #332, #425, #426, #427, #428, #429, #430, #431, #432, #525, #526, #527, #528, #529, #530, #530, #531, #532; BREAKER: 30A/2P; CIRCUITRY: 2#10, #10G, 3/4" C.
  - BC-2: APTS #222, #223, #233, #234, #322, #323, #333, #334, #424, #433, #434, #524, #533, #534; BREAKER: 40A/2P; CIRCUITRY: 2#8, #10G, 3/4" C.
  - BC-4: APTS #423, #523; BREAKER: 60A/2P; CIRCUITRY: 2#4, #10G, 1" C.

4. PROVIDE BREAKERS AND CIRCUITRY FOR CONDENSING UNITS AS FOLLOWS:
  - CU-1: APTS #224, #225, #226, #227, #228, #229, #230, #231, #232, #324, #325, #326, #327, #328, #329, #330, #331, #332, #425, #426, #427, #428, #429, #430, #431, #432, #525, #526, #527, #528, #529, #530, #530, #531, #532; BREAKER: 20A/2P; CIRCUITRY: 2#12, #12G, 1/2" C.
  - CU-2: APTS #222, #223, #233, #234, #322, #323, #333, #334, #424, #433, #434, #524, #533, #534; BREAKER: 20A/2P; CIRCUITRY: 2#12, #12G, 1/2" C.
  - CU-4: APTS #423, #523; BREAKER: 30A/2P; CIRCUITRY: 2#10, #10G, 3/4" C.

5. CIRCUIT ONLY APPLICABLE FOR THREE BEDROOM UNITS. FOR TWO BEDROOM UNIT , LEAVE CIRCUIT AS A BLANK SPACE.

6. CIRCUIT SHALL BE SPARE IN ADA APARTMENTS



1 EXTERIOR LIGHTING CONTROL DIAGRAM  
No Scale

Panel Designation: C1				Mounting: Recessed Flush			
Location: COMMERCIAL SPACE 142				Bus Amps: 225			
Voltage: 208Y/120V-3Ph-4W				MCB Amps: MLO			
Enclosure: NEMA 1				Other: 22 KAIC Series Rated			
Provide integral OR external surge suppression device							
Circuit #	Load Description	Conductors	C/B Size	C/B Size	Conductors	Load Description	Circuit #
1	LTC: Open Space	2#12,#12G,1/2"C	20 / 1	30 / 2	2#10,#10G	Electric Heater 'EH-3'	2
3	LTC: Elec. Room	2#12,#12G,1/2"C	20 / 1			(5KW)	4
5	RCPT: North Wall	2#12,#12G,1/2"C	20 / 1	30 / 2	2#10,#10G	Electric Heater 'EH-4'	6
7	RCPT: North Wall	2#12,#12G,1/2"C	20 / 1			(5KW)	8
9	RCPT: East Wall	2#12,#12G,1/2"C	20 / 1	30 / 2	2#10,#10G	Electric Heater 'EH-5'	10
11	RCPT: South Wall	2#12,#12G,1/2"C	20 / 1			(5KW)	12
13	RCPT: Panel Board	2#12,#12G,1/2"C	20 / 1	20 / 1	---	SPARE	14
15	RCPT: West Wall	2#12,#12G,1/2"C	20 / 1	20 / 1	---	SPARE	16
17	SPARE	---	20 / 1	20 / 1	---	SPARE	18
19	SPARE	---	20 / 1	20 / 1	---	SPARE	20
21	SPARE	---	20 / 1	20 / 1	---	SPARE	22
23	SPARE	---	20 / 1	20 / 1	---	SPARE	24
25	SPARE	---	20 / 1	20 / 1	---	SPARE	26
27	SPARE	---	20 / 1	20 / 1	---	SPARE	28
29	SPARE	---	20 / 1	20 / 1	---	SPARE	30
31	SPARE	---	20 / 1	---	---	BLANK	32
33	SPARE	---	20 / 1	---	---	BLANK	34
35	SPARE	---	20 / 1	---	---	BLANK	36
37	SPARE	---	20 / 1	---	---	BLANK	38
39	SPARE	---	20 / 1	---	---	BLANK	40
41	SPARE	---	20 / 1	---	---	BLANK	42

Panel Designation: C2				Mounting: Recessed Flush			
Location: COMMERCIAL SPACE 143				Bus Amps: 225			
Voltage: 208Y/120V-3Ph-4W				MCB Amps: MLO			
Enclosure: NEMA 1				Other: 22 KAIC Series Rated			
Provide integral OR external surge suppression device							
Circuit #	Load Description	Conductors	C/B Size	C/B Size	Conductors	Load Description	Circuit #
1	LTC: Open Space	2#12,#12G,1/2"C	20 / 1	30 / 2	2#10,#10G	Electric Heater 'EH-1'	2
3	RCPT: North Wall	2#12,#12G,1/2"C	20 / 1			(5KW)	4
5	RCPT: East Wall	2#12,#12G,1/2"C	20 / 1	30 / 2	2#10,#10G	Electric Heater 'EH-2'	6
7	RCPT: South Wall	2#12,#12G,1/2"C	20 / 1			(5KW)	8
9	RCPT: West Wall	2#12,#12G,1/2"C	20 / 1	20 / 1	--	SPARE	10
11	SPARE	--	20 / 1	20 / 1	--	SPARE	12
13	SPARE	--	20 / 1	20 / 1	--	SPARE	14
15	SPARE	--	20 / 1	20 / 1	--	SPARE	16
17	SPARE	--	20 / 1	20 / 1	--	SPARE	18
19	SPARE	--	20 / 1	20 / 1	--	SPARE	20
21	SPARE	--	20 / 1	20 / 1	--	SPARE	22
23	SPARE	--	20 / 1	20 / 1	--	SPARE	24
25	SPARE	--	20 / 1	20 / 1	--	SPARE	26
27	SPARE	--	20 / 1	20 / 1	--	SPARE	28
29	SPARE	--	20 / 1	20 / 1	--	SPARE	30
31	SPARE	--	20 / 1	--	--	BLANK	32
33	SPARE	--	20 / 1	--	--	BLANK	34
35	SPARE	--	20 / 1	--	--	BLANK	36
37	SPARE	--	20 / 1	--	--	BLANK	38
39	SPARE	--	20 / 1	--	--	BLANK	40
41	SPARE	--	20 / 1	--	--	BLANK	42

LEE LOFTS, PHASE II, BUILDING 2

HISTORIC REHAB. (APARTMENTS, COMMERCIAL)

SALINA, KANSAS

14654

Feb. 2023

PROFESSIONAL ENGINEER

REVISION:  
ASI #005

DATE: February 15, 2023  
JOB: 20-3120  
SHEET NO.:

E6.3

COPYRIGHTED ©