



Jones Gillam Renz Architects

Address

730 N 9th St.
Salina, KS 67401

1881 Main St., Suite 301
Kansas City, MO 64108

Contact

jgr@jgrarchitects.com
(785) 827-0386

Web

jgrarchitects.com

ARCHITECT'S SUPPLEMENTAL INSTRUCTIONS

JONES GILLAM RENZ DOCUMENT JGR 710

PROJECT:	The Reserves at Magnolia New Apartment Complex Denton, TX	Report No.	Two (2)
OWNER:	Overland Property Group Dan Maximuk 234 N. Santa Fe Ave, Suite A Salina, KS 67401	Date	Dec. 9, 2024
CONTRACTOR:	Snyder Construction Group 4820 N. Town Centre Dr. Ozark, MO 65721	Architect's Proj No.	21-3205
		Contract For:	General Construction Mechanical, Electrical

The work shall be carried out in accordance with the following supplemental instructions issued in accordance with the Contract Documents without change in Contract Sum or Contract Time. Prior to proceeding in accordance with these instructions, indicate your acceptance of these instructions for minor change to the Work as consistent with the Contract Documents and return a copy to the Architect.

DESCRIPTION:

Contractor to make adjustments as needed and required per the modifications as indicated on attached drawings and in the below descriptions.

- 1) Slatpanel wall system to be used in Community Room #106 at the accent wall opposite the entry door. Reference Details C, K, L & M on Sheet A8.2. Reference attached brochure on Slatpanel system. Color: Black. Size: 25.20"x94.49" (8 slats)
- 2) Install LVT at Office 108 & 109 in lieu of carpet. Reference revised finished floor plans on sheet A9.1 and public finish schedule on Sheet A10.1
- 3) Entry accent tile at Community Room #106 has been revised to straight lines in lieu of curved lines. Reference revised finished floor plans on Sheet A9.1
- 4) Install Schuler RENO-U edge trim (Brushed Nickel) at all Tile/LVT transitions in Community Room #106 and at the entry of Restrooms: Men #103 & Women #104

Attachments:

1. Revised Architectural Sheets: A8.2, A9.1, A10.1
2. SlatPanel Wall Information

Issued by:	Jones Gillam Renz Architects PO Box 2928, Salina, KS 67402	
	Jeff Gillam, Project Architect 785 827 0386	jgillam@jgrarchitects.com
	Maggie Gillam, Project Manager	mgillam@jgrarchitects.com

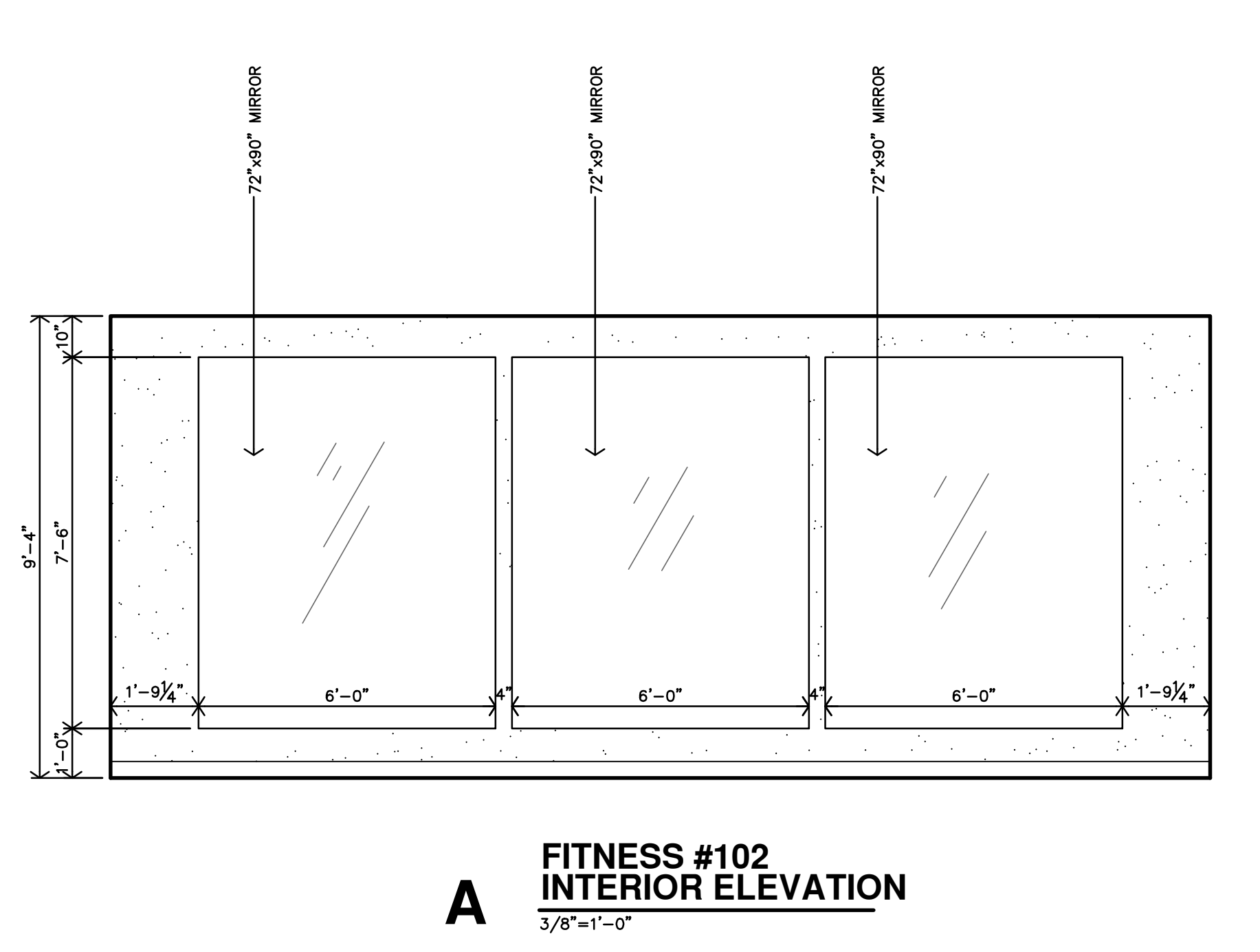
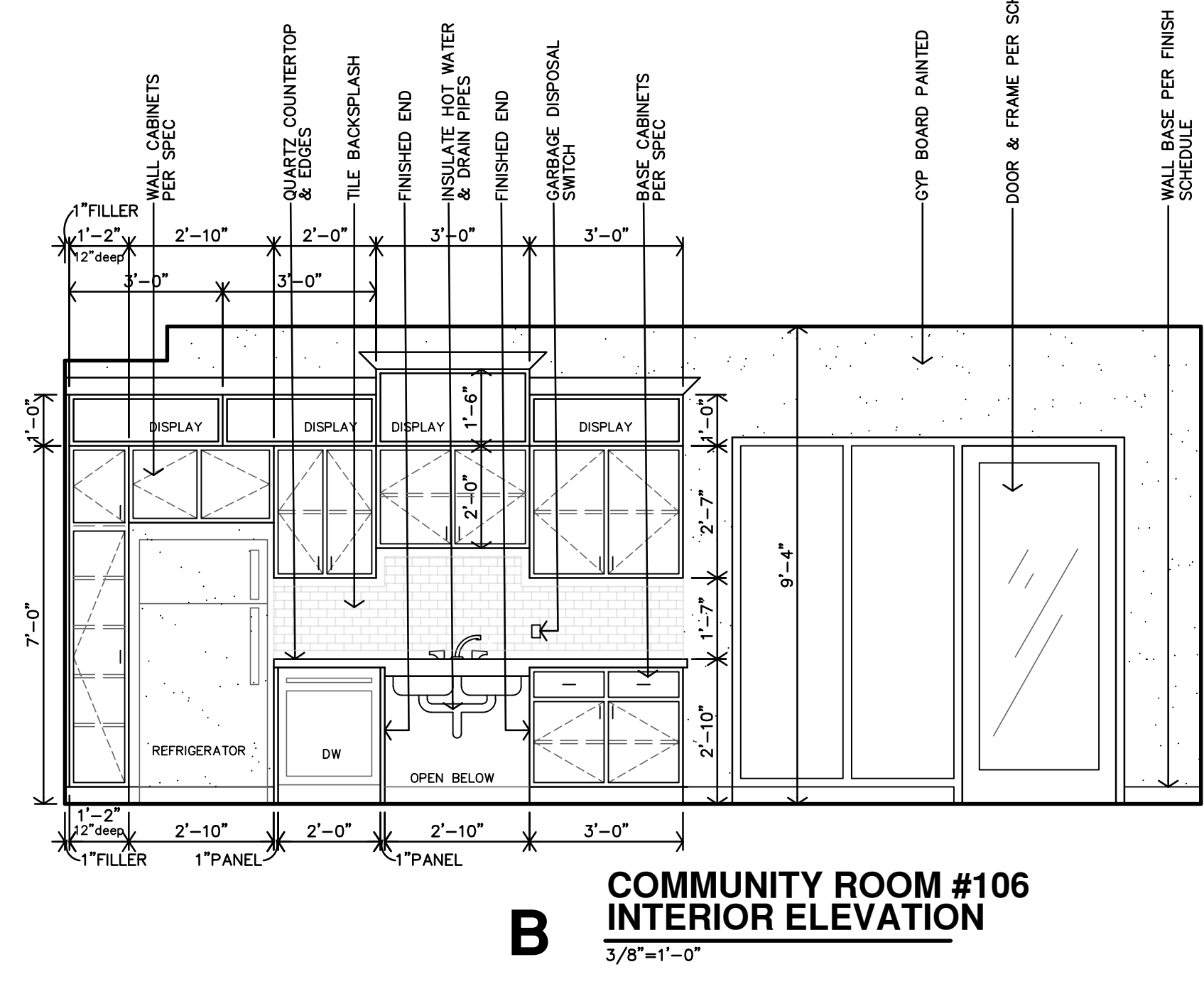
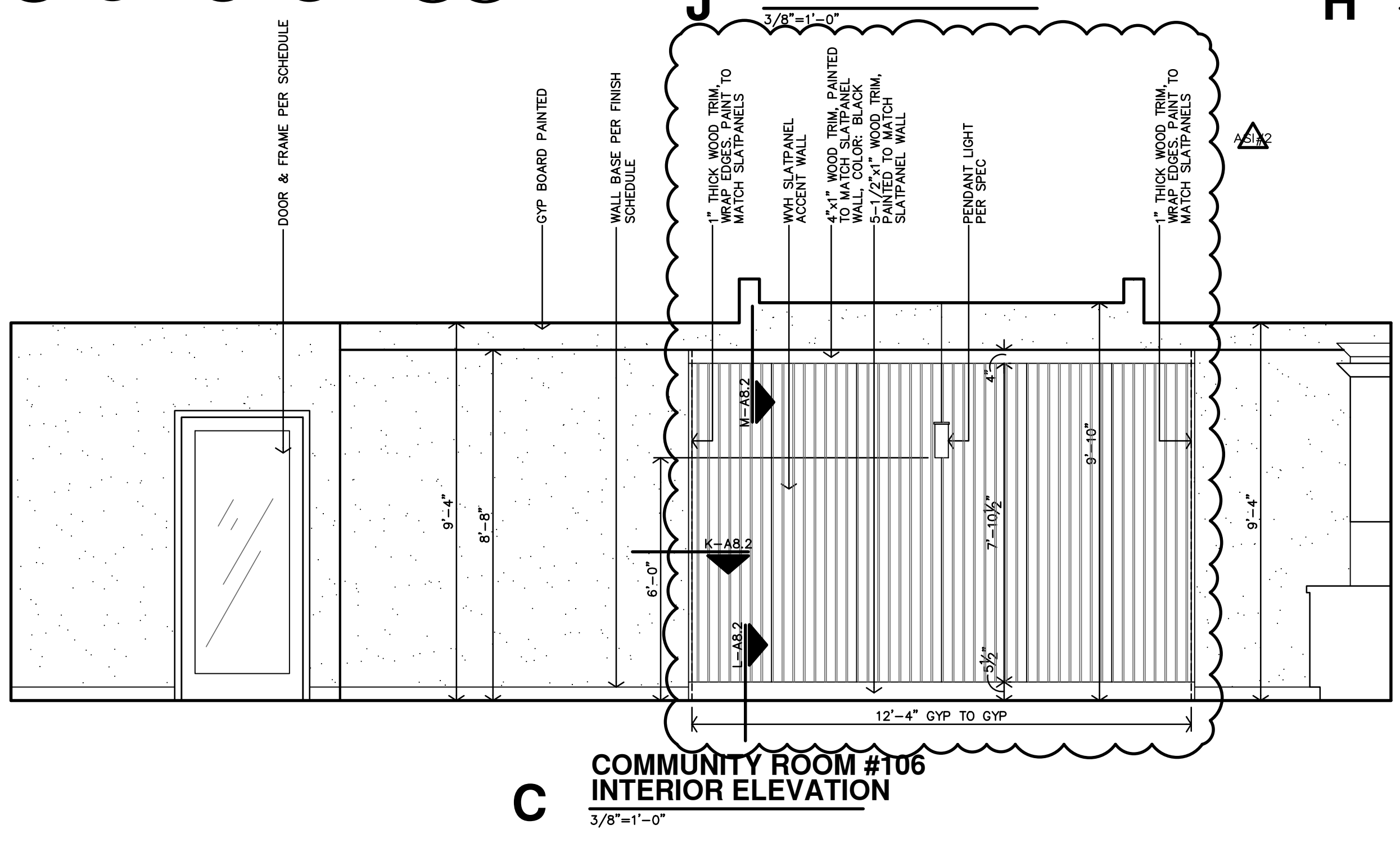
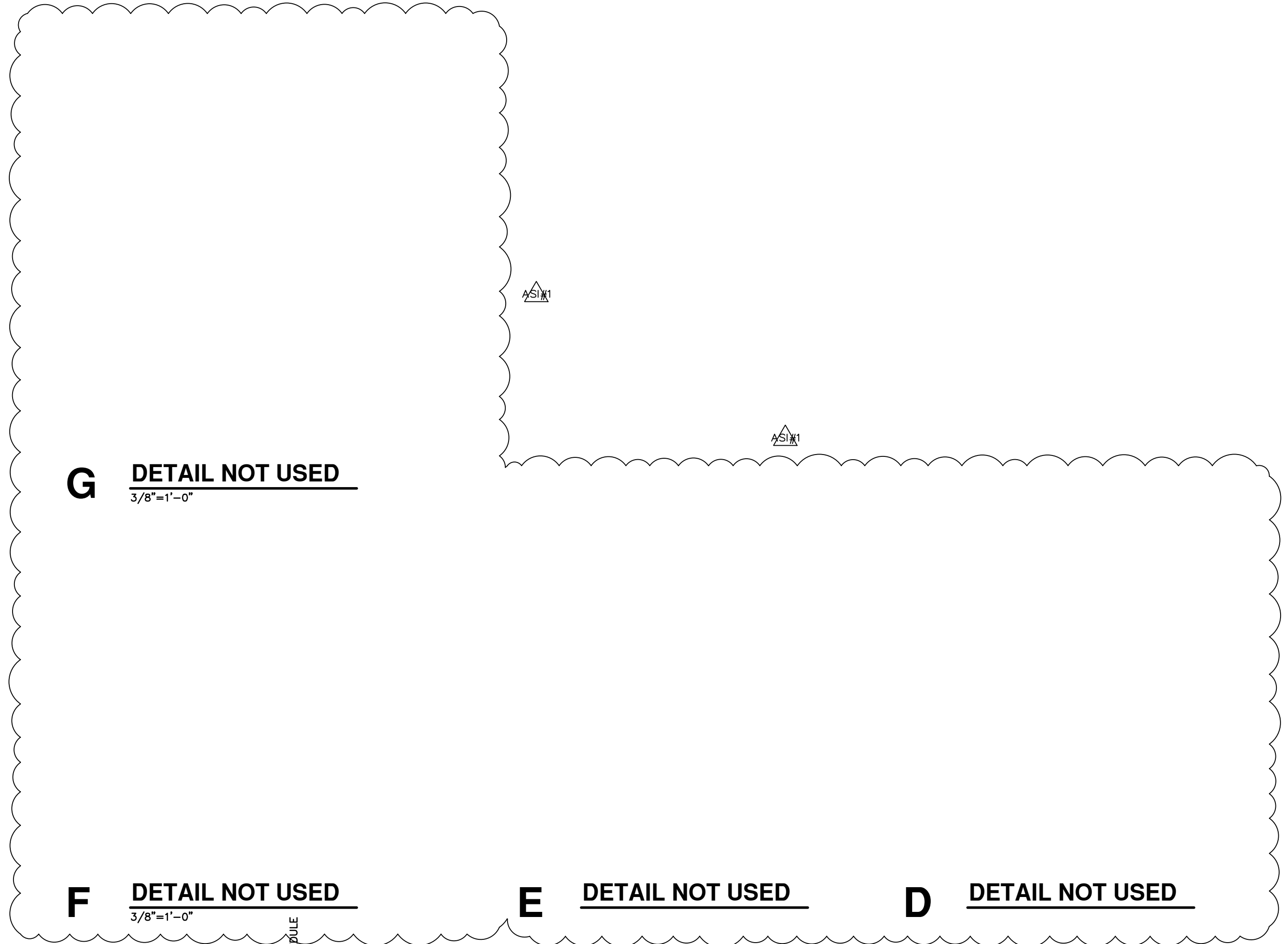
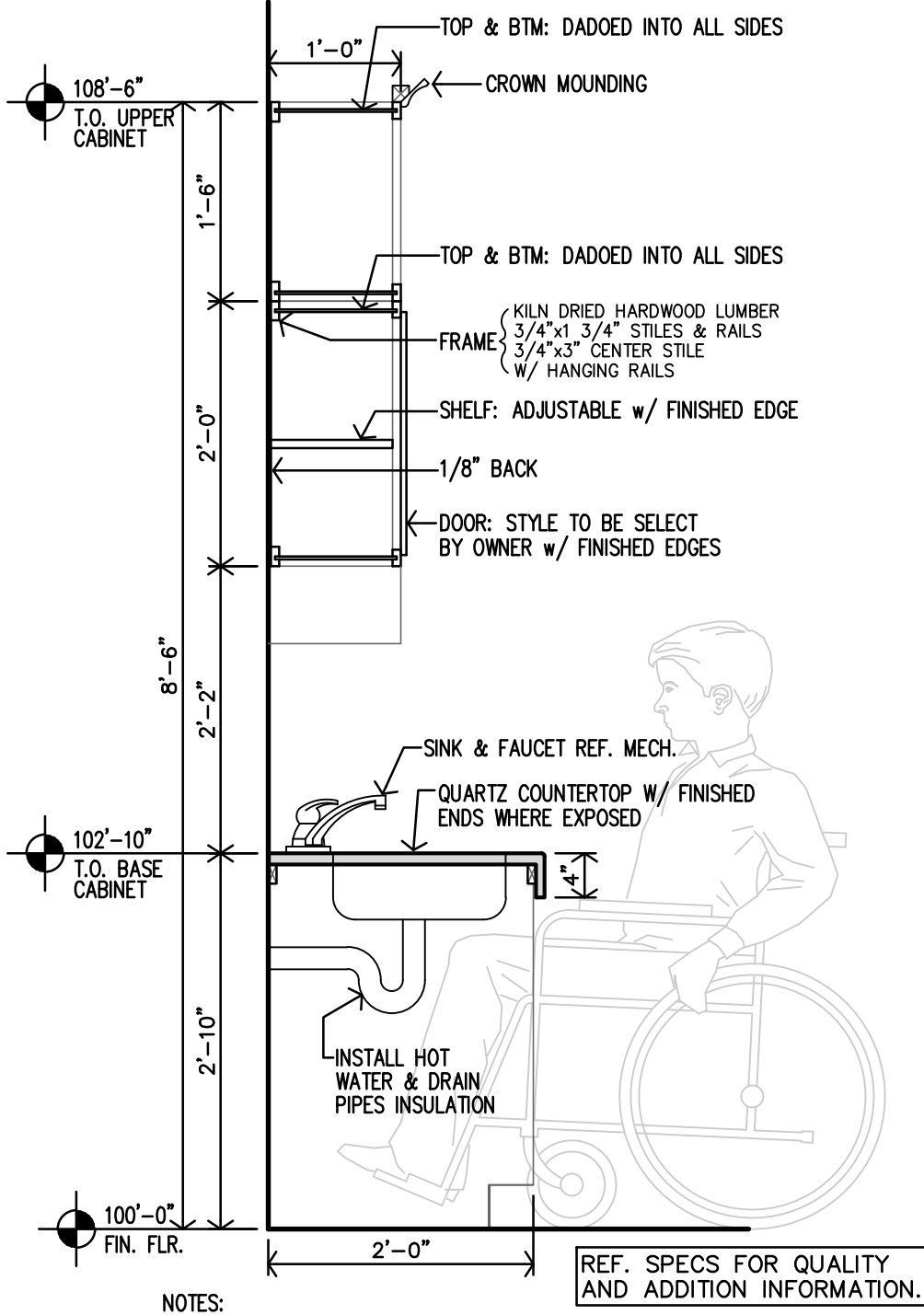
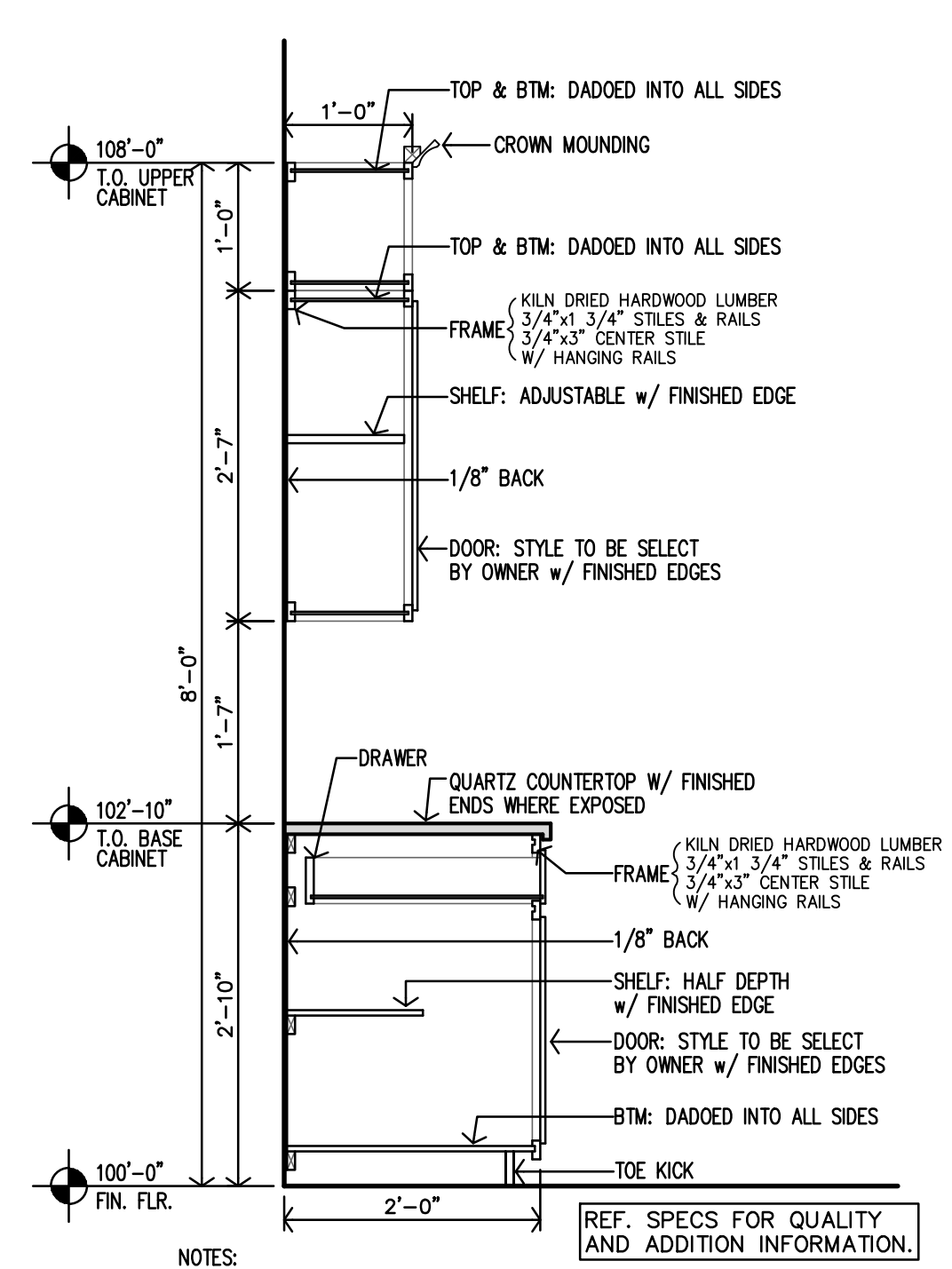
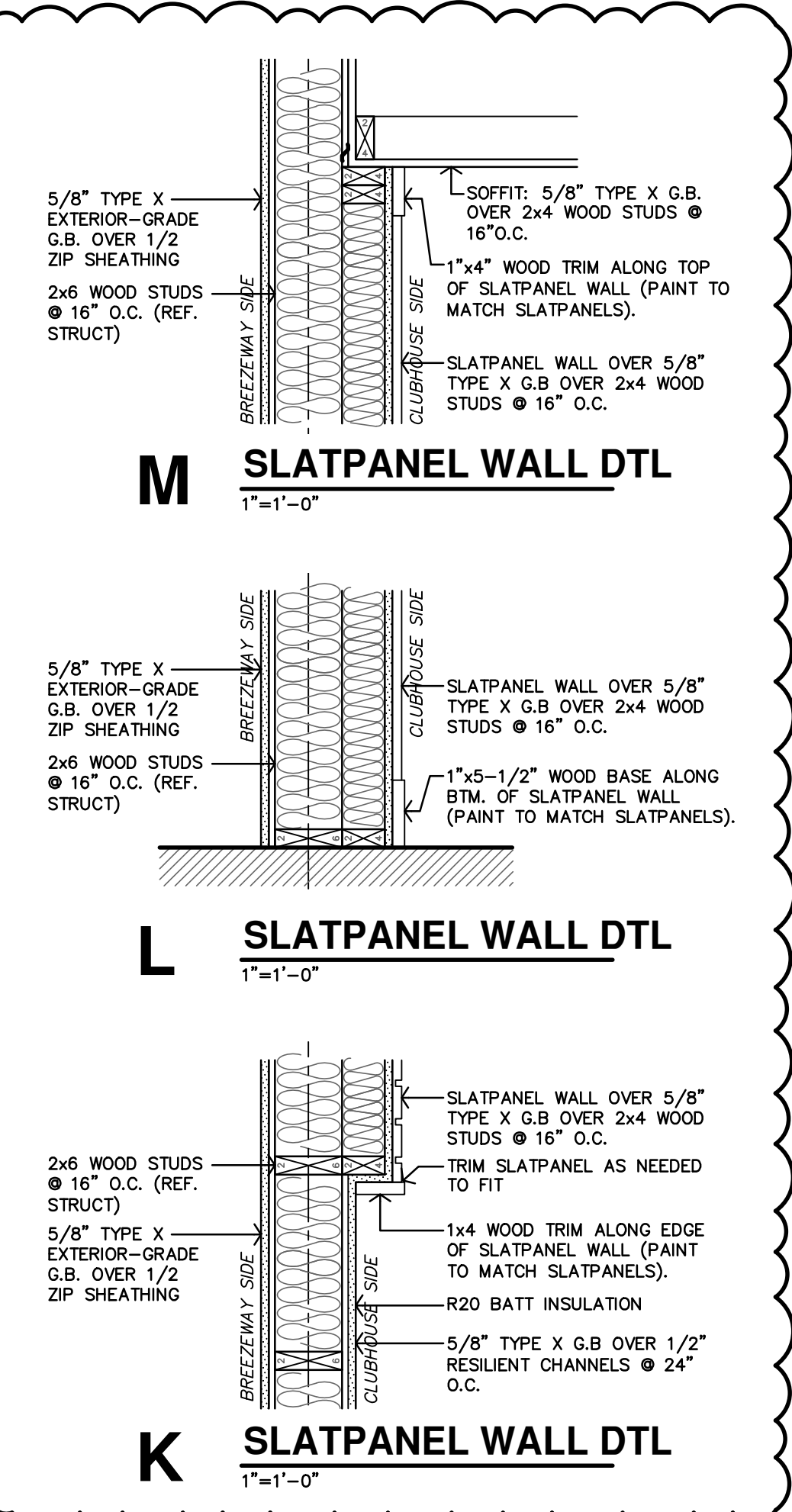
Copies to:

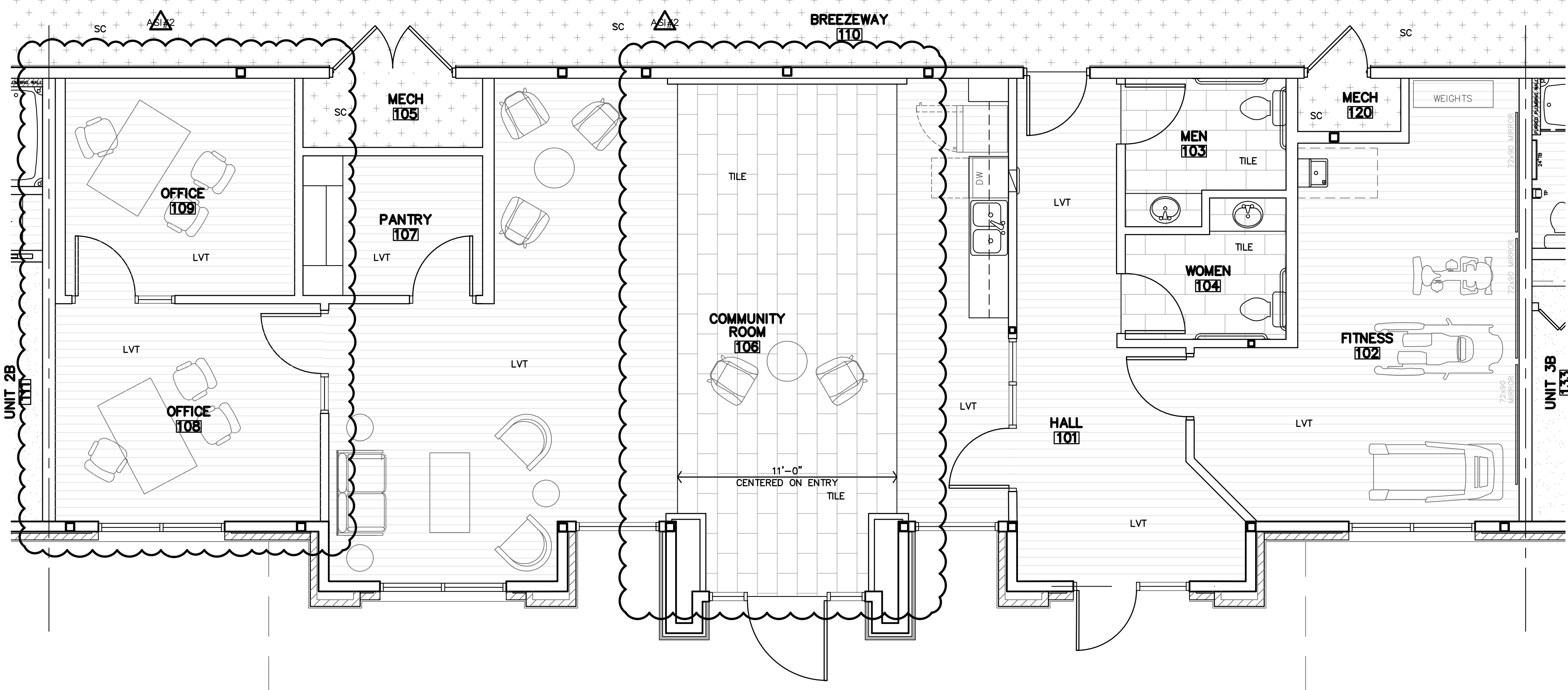
Josh Fisher – Snyder Construction Group
Dan Maximuk, April Engstrom – Overland Property Group
John Lewis-Smith, Ryan Lies - LST
Mike Falbe – BDC
Andrea Taylor - MMA



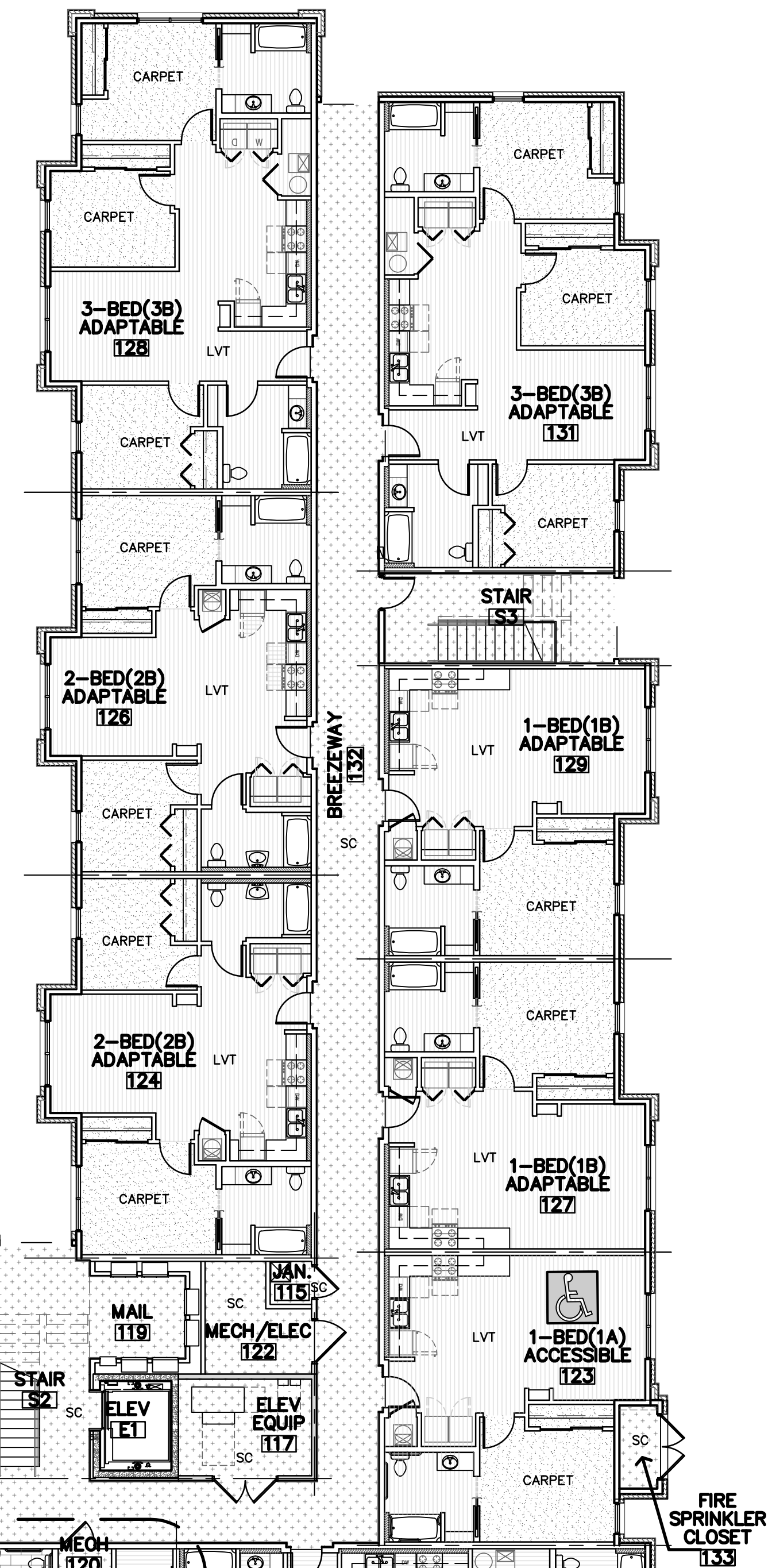
REVISION:	
APD	9-8-2023
AS/1	7-22-2024
AS/2	12-11-2024
DATE:	5-17-2023
JOB:	21-3205
SHEET NO.:	

- ### CASEWORK NOTES
1. PLASTIC LAMINATE ON ALL EXPOSED SURFACES UNLESS NOTED OTHERWISE.
 2. PLASTIC LAMINATE AT ALL EXPOSED EDGES UNLESS NOTED OTHERWISE.
 3. ENTIRE CABINET DOOR (INTERIOR & EXTERIOR) TO BE PLASTIC LAMINATE.
 4. INTERIOR UNEXPOSED SURFACES TO BE "BLACK" MELAMINE UNLESS NOTED OTHERWISE.
 5. COUNTERTOPS & BACKSPLASHES TO BE PLASTIC LAMINATE W/ EASED EDGES.
 6. PROVIDE ALL NECESSARY FILLERS OF MATCHING MATERIALS. INSTALL CONTINUOUS FINISH FLOORING BASE @ CASEWORK TOE KICK.
 7. ALL ADJUSTABLE SHELVING SHALL BE 3/4" THICK MATERIAL.
 8. ALL ADJUSTABLE UNEXPOSED MELAMINE SHELVING SHALL HAVE ALL FOUR EDGES TAPED.
 9. EXPOSED ADJUSTABLE SHELVING SHALL HAVE FULL THICKNESS PLASTIC LAMINATE AT ALL EXPOSED SURFACES AND ALL FOUR EDGES. TAPE IS NOT ACCEPTABLE.
 10. COUNTERTOPS SHALL RECEIVE 1/2" W x 3mm EDGE BAND.
 11. ALL UPPER CABINETS SHALL HAVE (2) ADJUSTABLE SHELVES PER EACH, UNLESS NOTED OTHERWISE.
 12. REFERENCE ELEVATIONS FOR NUMBER OF ADJUSTABLE SHELVES AT LOWER CABINET UNITS.
 13. STAINING AND PAINTING OF ALL HARDWOOD TRIM SHALL BE PER THE PAINTER.
 14. MULTIPLE LAMINATES (PREMIUM FINISHES AS WELL) WILL BE SELECTED BY ARCHITECT.
 15. CABINETS TO BE FLUSH OVERLAY UNLESS NOTED OTHERWISE.
 16. PROVIDE BLOCKING BEHIND WALL FOR SUPPORT OF CABINETRY.
 17. PROVIDE & INSTALL ANGLE SUPPORT BRACKETS WHERE COUNTERTOP SPAN EXCEEDS 48" IN WIDTH.





B ENLARGED PARTIAL FINISH FLOOR PLAN
1/4"=1'-0"

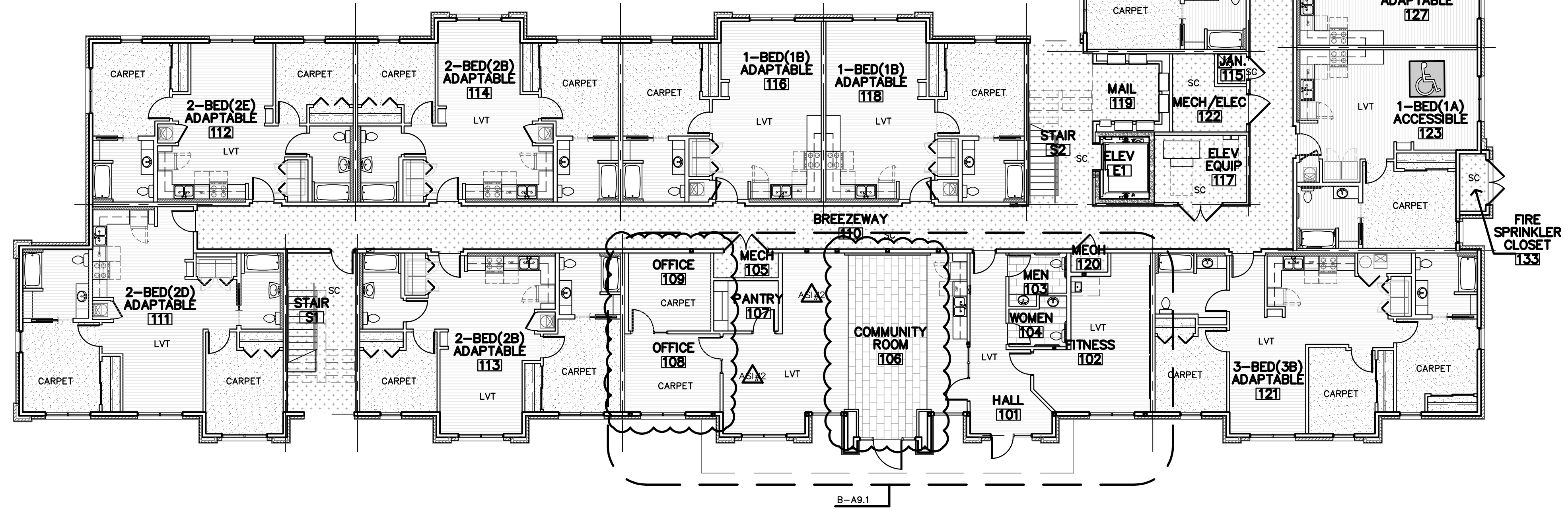


A FIRST FLOOR FINISH FLOOR PLAN
3/32"=1'-0"

- FLOORING GENERAL NOTES**
- FLOORING CONTRACTOR SHALL VERIFY THAT SUBFLOOR IS LEVEL AND PROPERLY PREPPED PRIOR TO INSTALLATION OF ANY FLOORING MATERIALS.
 - CONTRACTOR SHALL VERIFY THAT FLOORS ARE PREPPED/"FLOORSTONED" FOR LEVEL TRANSITION BETWEEN DIFFERING MATERIALS.
 - CONTRACTOR SHALL COORDINATE WITH INTERIOR ELEVATIONS, FLOOR PLANS AND MISCELLANEOUS DETAILS TO VERIFY ALL AESTHETIC ACCENTS AND DETAILS.
 - CUT TILE TIGHT AROUND DOOR FRAMES, AT VOT FLOORS INSTALL CLEAR SILICONE SEALANT AT THE FLOOR/FRAME TRANSITION.
 - INSTALL METAL SCHLUTER TRANSITION BETWEEN FLOOR & WALL MATERIAL TRANSITIONS UNLESS BULLNOSE OR WOOD TRIM IS INDICATED.
 - ADD REDUCER STRIP AT ALL FLOORING TRANSITIONS.
 - UNIT KITCHEN & BATH: AT REMOVABLE CABINET FRONTS, WALLS TO BE FINISHED & FLOORING CONTINUOUS UNDERNEATH. NO PLUMBING MODIFICATIONS ALLOWED AFTER CABINET FRONT IS REMOVED.
 - VINYL TILE: PATCH, FILL VOIDS AND ENSURE FLOOR IS LEVEL & READY FOR NEW INSTALLATION APPROVED BY THE FLOOR MANUFACTURER.
 - CARPET: PATCH, FILL VOIDS, SAND AND LEVEL, BEFORE INSTALLING

FLOORING LEGEND

SC	SEALED CONCRETE
LVT	LUXURY VINYL TILE
CARPET	CARPET



REVISION:
12-11-2024

DATE: 5-17-2023
JOB: 21-3205
SHEET NO.:

A9.1

WVH®

Slatpanel® | Acoustic Slat Color Wall Panels

Technical Sheet

Contents

General information

Page 2

Dimensions

Page 3

Sound absorption

Page 4

Installation guide

Page 5

Contact us

302-216-6177

sales@thewoodvenerhub.com

thewoodvenerhub.com

Slatpanel® | Acoustic Slat Color Wall Panels

The Slatpanel® acoustic slat color wall panel range is a beautifully designed strip decorative wall and ceiling panel which boasts high-quality acoustic properties. The panels can be easily applied to both walls and ceilings - modern styling personified in every way.



Eight wide slat panel

The Acoustic Slat Color Wall Panels come in 8 wide slats with each slat measuring 1.06" wide.



Fire rating

The slats on the Acoustic Color Wall Panel Range have no fire rating, but a fire-retardant finish can be applied to achieve a fire rating. A selection of our panels are available fully fire-rated; please contact our customer care team for availability.



Care and maintenance

We recommend adding a protective finish to the panels if possible. Wood oil is perfect as it protects and keeps the natural look and feel of the wood. Once this is applied, light dusting or hovering will prevent any dust build-up. If you choose to keep the panels without a finish, then a dry cloth is needed to wipe the panels down.



Finishes

All of our panels come unfinished as standard, so you can finish as required for your project.

We now offer a selection of pre-finished panels, to take the hassle out of finishing them yourself. It is always advised to finish natural wood to protect it and, more importantly, to make it look even better than it already does. Rather than purchasing a separate tin of oil, save time and money by selecting the finished panel at checkout. You can install it straight on your wall from the box without extra work!

The finish available is a satin oil professionally applied to give an even coating across the panel.



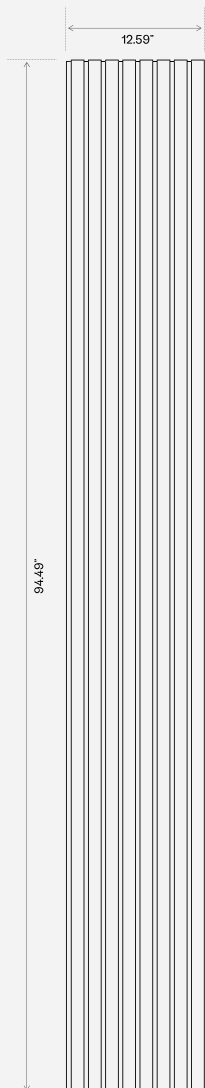
Superior sound absorption

These panels have acoustic properties. See [page 4](#) for more details.

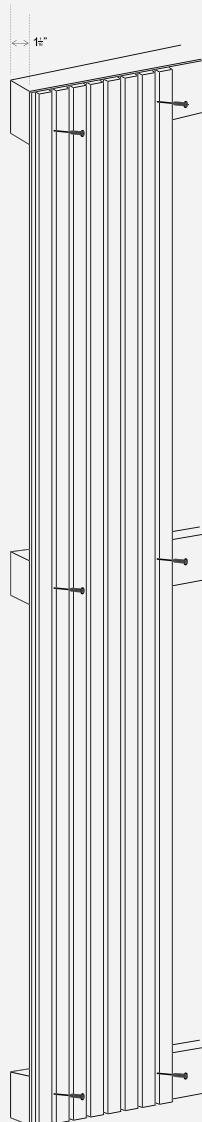
Dimensions

Surface	Material	Dimensions (in)	SQ FT	Weight
Slatpanel® Snow White Color Matte Acoustic Slat Wall Panels	Laminate/ MDF/Felt	25.20" (W) x 94.49" (H) x 0.78" (D) - 8 slats	16.54	23 lb
Slatpanel® Dusty Gray Color Matte Acoustic Slat Wall Panels	Laminate/ MDF/Felt	25.20" (W) x 94.49" (H) x 0.78" (D) - 8 slats	16.54	23 lb
Slatpanel® Midnight Blue Color Matte Acoustic Slat Wall Panels	Laminate/ MDF/Felt	25.20" (W) x 94.49" (H) x 0.78" (D) - 8 slats	16.54	23 lb
Slatpanel® Black Color Matte Acoustic Slat Wall Panels	Laminate/ MDF/Felt	25.20" (W) x 94.49" (H) x 0.78" (D) - 8 slats	16.54	23 lb

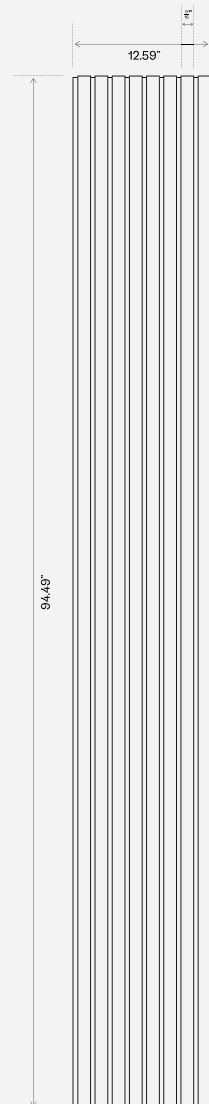
Flush mounted



Furr Out mounted



Slat Dimensions



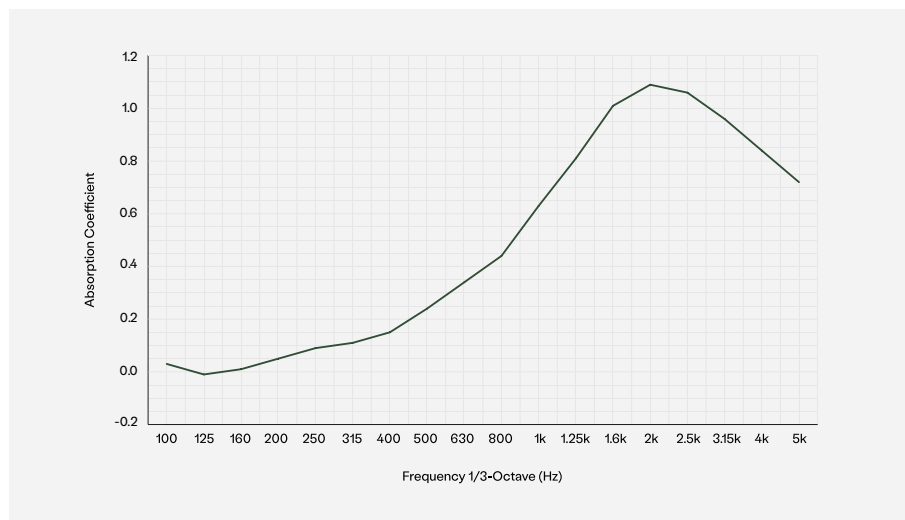
Sound absorption

Figure 1: (Flush Mounted Sound Absorption) Sound

Measurement of sound absorption coefficient acc. DS/EN ISO 354:2003.

The 11 panels were laid out flat on the concrete floor in the reverberation test room. Closed frame around edges.

Test Area: 170.5 sq ft / Room volume: 2314 sq ft / Room surface area 2562 sq ft



Freq. Hz	a ^s
100	0.03
125	-0.01
160	0.01
200	0.05
250	0.09
315	0.11
400	0.15
500	0.24
630	0.34
800	0.44
1k	0.63
1.25k	0.81
1.6k	1.01
2k	1.09
2.5k	1.06
3.15k	0.96
4k	0.84
5k	0.72

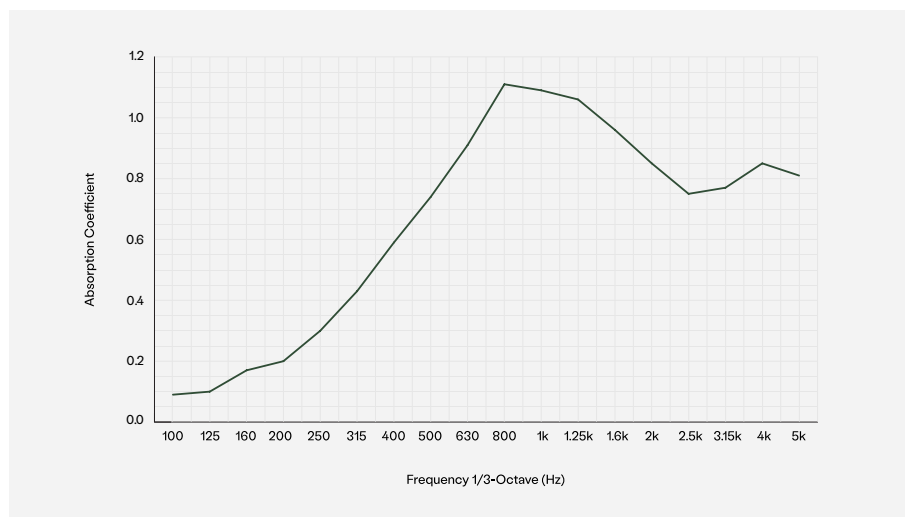
Figure 2: (Furr Out Mounted) Sound Absorption:

Measurement of sound absorption coefficient acc. DS/EN ISO 354:2003.

Mounting with furring strips: Spacing 1.77" behind panels. Closed frame around edges.

Test Area: 170.5 sq ft / Room volume: 2314 sq ft / Room surface area 2562 sq ft

If a product like Rockwool sound insulation is installed in-between the furring strips, behind the panels this will achieve Class A sound absorption.



Freq. Hz	a ^s
100	0.09
125	0.10
160	0.17
200	0.20
250	0.30
315	0.43
400	0.59
500	0.74
630	0.91
800	1.11
1k	1.09
1.25k	1.06
1.6k	0.96
2k	0.85
2.5k	0.75
3.15k	0.77
4k	0.85
5k	0.81


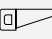






Installation Instructions

How to cut the Acoustic Slat Color Wall Panels

For the Acoustic Slat Color Wall Panels, if you are cutting width ways, we recommend a sharp, fine saw to cut through the slats and felt cleanly. To cut length ways, a sharp craft or Stanley knife can be used to cut through the felt.

To cut the Acoustic Slat Color Wall Panels, a sharp, fine saw will need to be used to cut width ways and length ways.

Tools needed

-  Measuring tape
-  Fine tooth or sharp saw
-  Masking tape
-  Sandpaper
-  Color screws
-  Furring Strips (optional)
-  Level
-  Hand drill

How to install the Acoustic Slat Color Wall Panels

There are 2x different options for installing the Slatpanel® Acoustic Slat Color Wall Panels.

1. Screwing directly into the wall:

By using color screws, the panels can be screwed directly into the wall through the MDF backing.

We recommend a minimum of 9 screws per panel at 7.5" intervals across the width and 31.5" down the length of the panel.

These panels are not intended to be installed in float mount applications without framework or joist to screw into.

Please make sure the correct fixings are used if going into plasterboard for example.

2. Screwing the panels into Furring Strips:

To hide wires, we recommend screwing furring strips to the wall and then screwing the panels directly into the batons through the MDF backing.

For panel dimensions and technical drawings, please see [page 3](#).



Watch our online installation videos

Acoustic Panels Installation Guide:
https://www.youtube.com/watch?v=7K_DD_7LLsQ

Need help? Contact us:



Call customer service:
302-216-6177

Monday – Friday
9am – 7pm EST



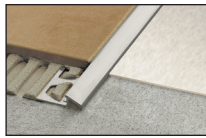
Email customer service:
sales@thewoodveneerhub.com



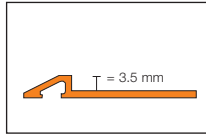
Use live chat:
thewoodveneerhub.com
(Click the pop-up in the bottom right of the screen)

Monday – Friday

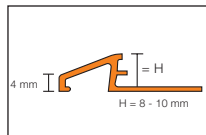
1.2 Schluter®-RENO-U



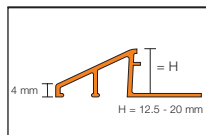
Aluminum
1/8" (3.5 mm)



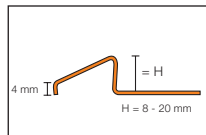
5/16" - 3/8" (8 - 10 mm)



1/2" - 3/4" (12.5 - 20 mm)



Stainless steel, Brass



H = mm - in.	Item No.				
	Stainless steel 304 (1.4301 = V2A) (E)	Brushed stainless steel 304 (1.4301 = V2A) (EB)	Solid brass (M)	Satin anodized aluminum (AE)	Bright chrome anodized aluminum (ACB)
3.5 - 1/8	-	-	-	AEU 35	-
8 - 5/16	EU 80	EBU 80	MU 80	AEU 80	AU 80 ACB
10 - 3/8	EU 100	EBU 100	MU 100	AEU 100	AU 100 ACB
11 - 7/16	EU 110	EBU 110	-	-	-
12.5 - 1/2	EU 125	EBU 125	MU 125	AEU 125	AU 125 ACB
15 - 9/16	EU 150	EBU 150	MU 150	AEU 150	-
17.5 - 11/16	EU 175	EBU 175	-	AEU 175	-
20 - 3/4	EU 200	EBU 200	-	-	-

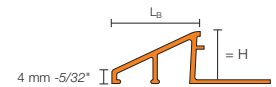
H = mm - in.	Item No.			
	Satin nickel anodized aluminum (AT)	Brushed nickel anodized aluminum (ATGB)	Brushed antique bronze anodized aluminum (ABGB)	Satin brass anodized aluminum (AM)
8 - 5/16	AU 80 AT	AU 80 ATGB	AU 80 ABGB	AU 80 AM
10 - 3/8	AU 100 AT	AU 100 ATGB	AU 100 ABGB	AU 100 AM
12.5 - 1/2	AU 125 AT	AU 125 ATGB	AU 125 ABGB	AU 125 AM

Length supplied: 8' 2-1/2" - 2.5 m

ADA-Compliant

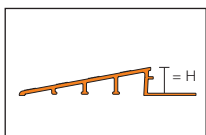
Note: When leading edge abuts lower surface covering, sizes 3/4" (20 mm) and 11/16" (17.5 mm) are not ADA-compliant. When leading edge rests on top of lower surface covering, sizes 3/4" (20 mm), 9/16" (15 mm), and 11/16" (17.5 mm) are not ADA-compliant.

Diagram Values



H = mm - in.	L _B = mm - in.	
	Aluminum	Stainless steel/Brass
3.5 - 1/8	9 - 23/64	-
8 - 5/16	12.5 - 31/64	13 - 33/64
10 - 3/8	16.5 - 21/32	17.5 - 11/16
11 - 7/16	-	19.5 - 49/64
12.5 - 1/2	22 - 55/64	23 - 29/32
15 - 9/16	27.5 - 1-5/64	28 - 1-7/64
17.5 - 11/16	27 - 1-1/16	33.5 - 1-5/16
20 - 3/4	31.5 - 1-15/64	40 - 1-37/64

1.8 Schluter®-RENO-RAMP



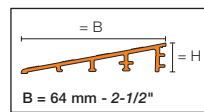
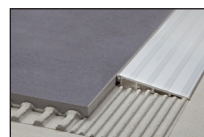
H = mm - in.	Item No.	
	Satin anodized aluminum (AE)	
B = 50 mm - 2"		
6 - 1/4	AERP 60 B50	
B = 64 mm - 2-1/2"		
10 - 3/8	AERP 100 B65	
12.5 - 1/2	AERP 125 B65	
B = 89 mm - 3-1/2"		
12.5 - 1/2	AERP 125 B90	
15 - 9/16	AERP 150 B90	
20 - 3/4	AERP 200 B90	

Length supplied: 8' 2-1/2" - 2.5 m

ADA-Compliant

Note: RENO-RAMP sizes 3/4" - 20 mm and 9/16" - 15 mm are not ADA-compliant.

1.8 Schluter®-RENO-RAMP-K

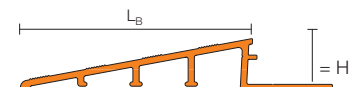


H = mm - in.	Item No.	
	Satin anodized aluminum (AE)	
B = 64 mm - 2-1/2"		
12.5 - 1/2	AERPK 125 B65	

Length supplied: 8' 2-1/2" - 2.5 m

Diagram Values

Length supplied: 8' 2-1/2" - 2.5 m



H = mm - in.	L _B = mm - in.
6 - 1/4	50 - 2
10 - 3/8	64 - 2-1/2
12.5 - 1/2	64 - 2-1/2
12.5 - 1/2	89 - 3-1/2
15 - 9/16	89 - 3-1/2
20 - 3/4	89 - 3-1/2