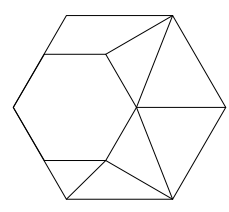


COLLECTIVE

DESIGN STUDIO



The Reserves at Eagle Point

P A I N T

CLUBHOUSE

MATERIAL: PAINT

MANUFACTURER: SHERWIN WILLIAMS

WALLS: SW 7008 ALABASTER

CEILING: SW 7008 ALABASTER

TRIM: SW7069 IRON ORE

STAIN: GREENWOOD MW413

WALLS:



TRIM:



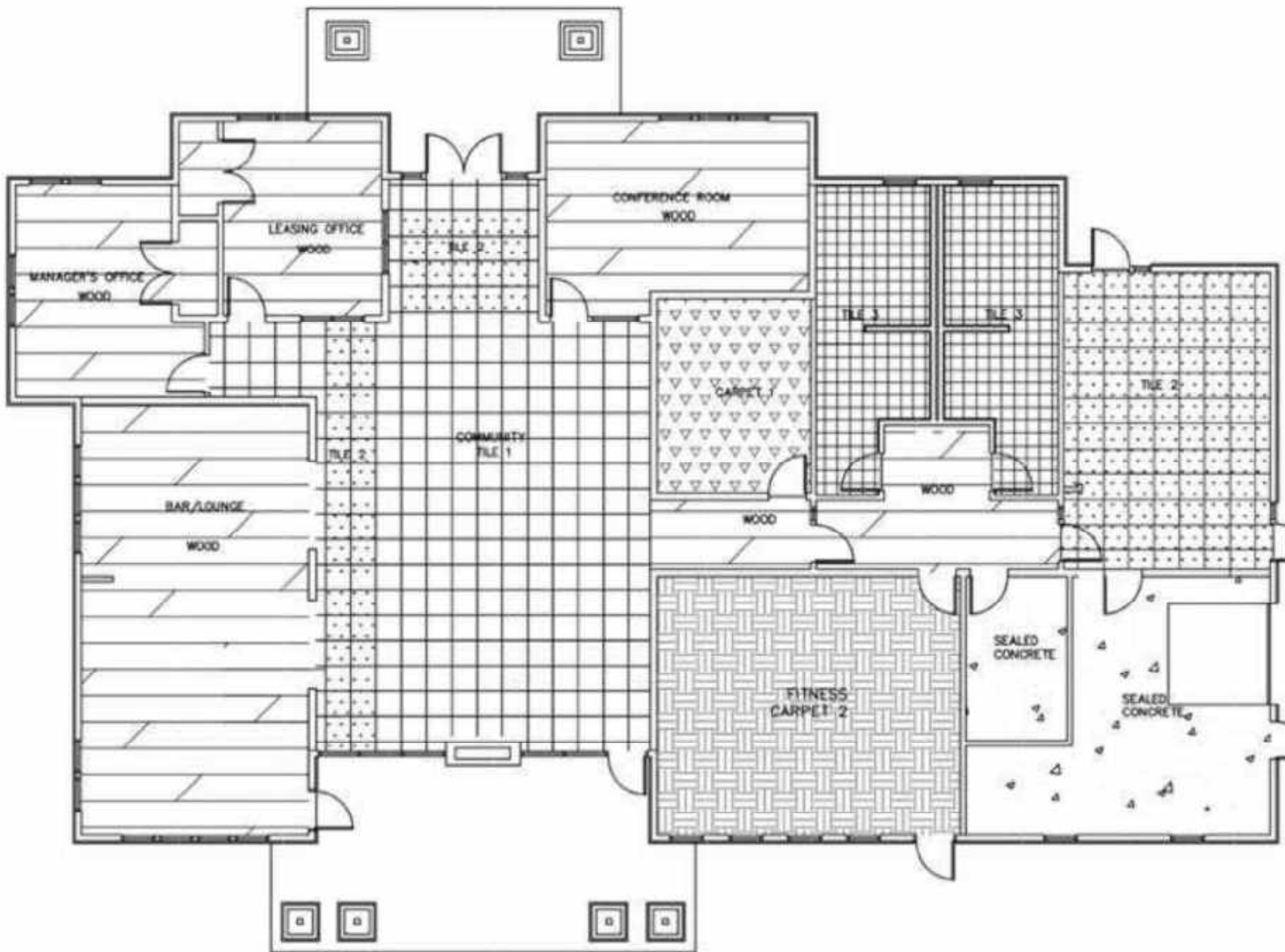
ACCENT:



STAIN:



CLUB HOUSE



TILE 1



TILE 2



TILE 3



WOOD



CARPET 1



CARPET 2



CONCRETE

CLUB HOUSE

FLOOR FINISH



TILE (T-1)

Daltile

Cohesion – Colorbody
Porcelain - 24X24

Beige CO22

Matte Finish



TILE (T-2)

Daltile

Cohesion – Colorbody
Porcelain - 24X24

Beige CO22

Textured



TILE (T-3)

Daltile

Fabric Art – Colorbody
Porcelain - 24X24

Taupe ML62

Unpolished



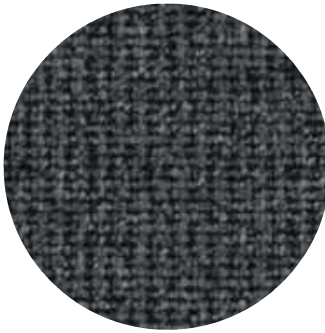
CARPET (CPT-1)

J+J Flooring Group

Kinetex

Carpet Square

Velocity 1814 | 1608 Move



CARPET (CPT-2)

J+J Flooring Group

Invision - Structure

Broadloom

1804 Truss



WOOD (WD-1)

Shaw Contract

Engineered Hardwood

Handcrafted. Ca364

Patina Oak 17020



WALL TILE -1

Daltile

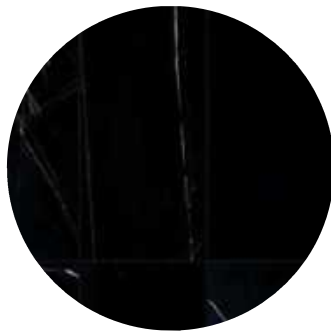
NERO MARQUINA

NATURAL STONE

CHEVRON

BLACK M462

Polished



WALL TILE -2

Daltile

NERO MARQUINA

NATURAL STONE

4" X 12"

BLACK M462

Polished



WALL TILE -3

Daltile

Fabric Art – Colorbody
Porcelain

12X24

Taupe ML62

Unpolished



WALL TILE - 4

Daltile

Fabric Art – Colorbody
Porcelain

12X24

AHEN STEEL PRISM MK72

Unpolished



MATERIAL: TILE (PORCELAIN)

MANUFACTURER: DAL TILE

PRODUCT NAME: COHESION- COLORBODY PORCELAIN

TILE TYPE: Porcelain

STYLE AND STYLE #: Matte Finish

COLOR AND COLOR #: Beige CO22

LOCATION (ROOM #): 101, 102, 109



PRODUCT SPECIFICATION:

SIZE: 24X24

TILE THICKNESS: 3/8"

GROUT JOINT SIZE: 1/8"

SHADE VARIATION: MEDIUM V2

INSTALLATION PATTERN: STRAIGHT LAY

DCOF OR COEFFICIENT OF FRICTION: ≥ 0.42

MOISTURE ABSORPTION: ASTM#: C373, RESULT: $< 0.5\%$

BREAKING STRENGTH: ASTM#: C648, RESULT: > 450 LBS

CHEMICAL RESISTANCE: ASTM#: C650, RESULT: RESISTANT

ABRASION RESISTANCE: ASTM#: MOHS, RESULT: 8.0

GROUT: TEC 940 ANTIQUE WHITE

MATERIAL: TILE (PORCELAIN)

MANUFACTURER: DAL TILE

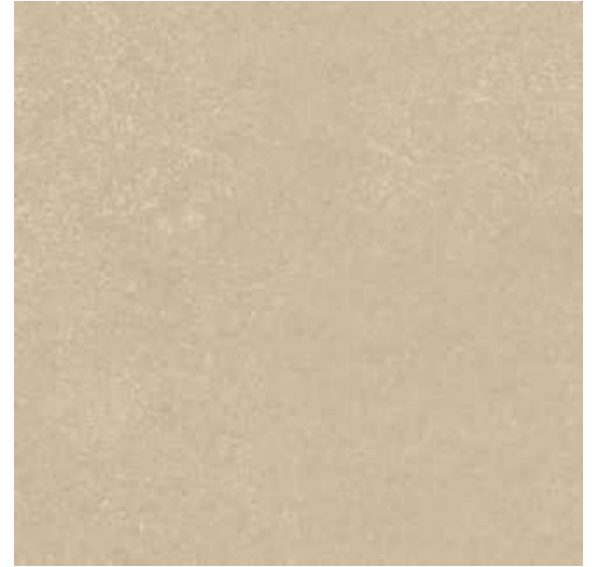
PRODUCT NAME: *Unity* – Colorbody Porcelain

TILE TYPE: Porcelain

STYLE AND STYLE #: TEXTURED

COLOR AND COLOR #: BEIGE CO22

LOCATION (ROOM#): 101, 102, 109



PRODUCT SPECIFICATION:

SIZE: 24" X 24"

TILE THICKNESS: 3/8"

GROUT JOINT SIZE: 1/8"

SHADE VARIATION: MEDIUM V2

INSTALLATION PATTERN: STRAIGHT LAY

DCOF OR COEFFICIENT OF FRICTION: ≥ 0.42

MOISTURE ABSORPTION: ASTM#: C373, RESULT: < 0.5%

BREAKING STRENGTH: ASTM#: C648, RESULT: > 450 LBS

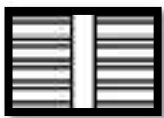
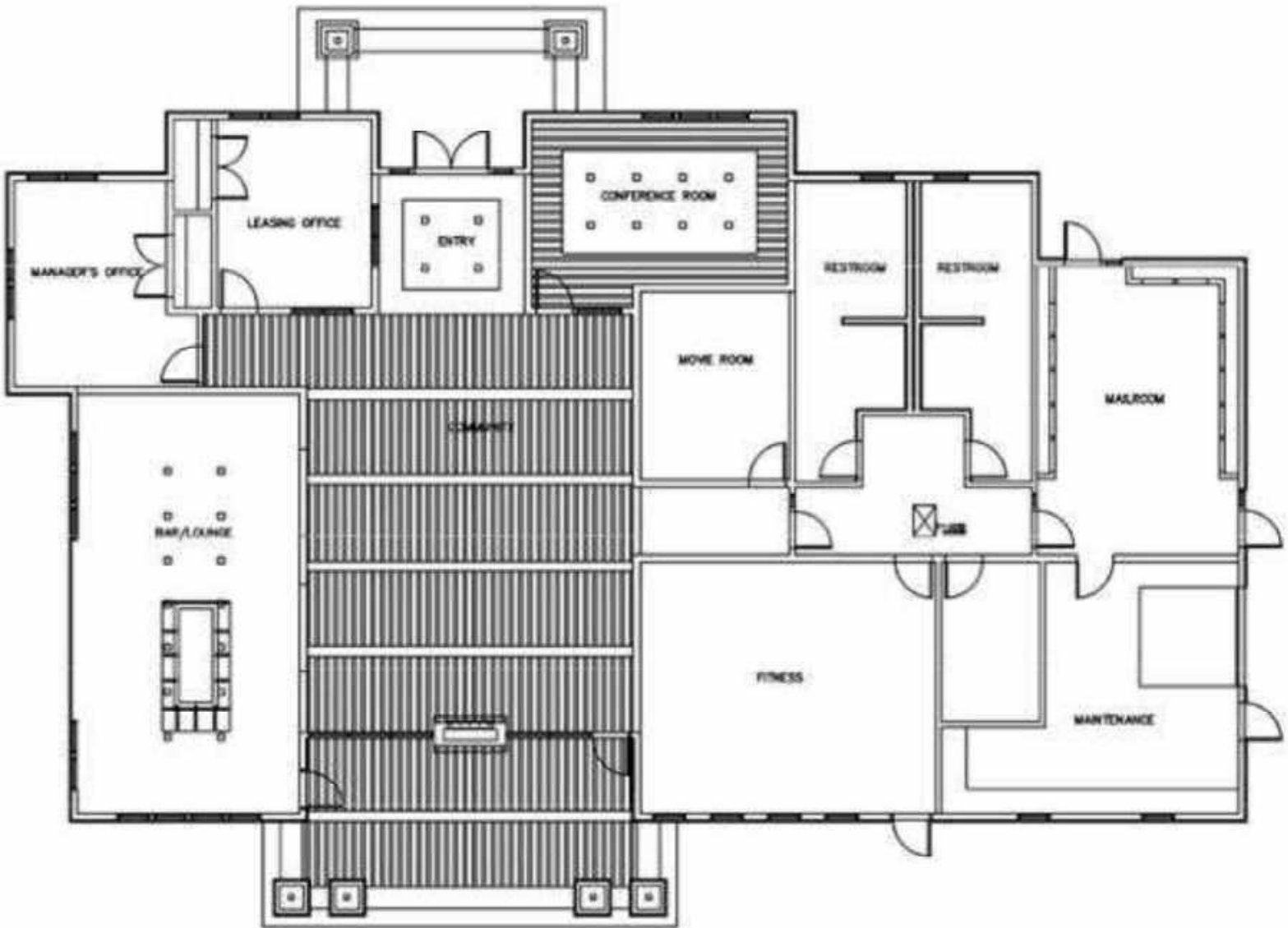
CHEMICAL RESISTANCE: ASTM#: C650, RESULT: RESISTANT

ABRASION RESISTANCE: ASTM#: MOHS, RESULT: 8.0

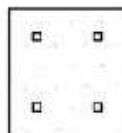
GROUT: TEC 940 ANTIQUE WHITE

CLUB HOUSE

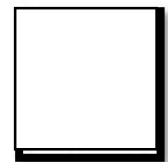
CEILING FINISH



BEAMS WITH TONGUE AND GROOVE CEILING



DROP GYP CLOUD - CEILING CLOUD



GYP SUM CEILING

MATERIAL: COMMUNITY ROOM CEILING

PRODUCT NAME: BEAMS WITH TONGUE AND GROOVE CEILINGS

FINISH: STAIN TBD

LOCATION (ROOM #):

FIREPLACE IN COMMUNITY ROOM #109



COMMUNITY CEILING – Dark Beams With Tongue And Groove

MATERIAL: DROP GYP CLOUD - CEILING CLOUD DETAIL

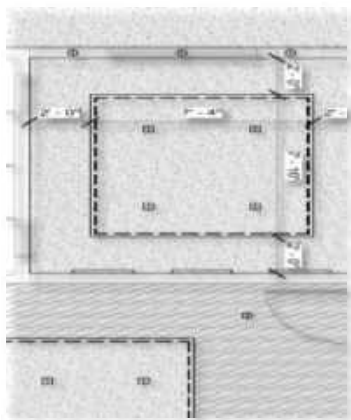
PAINT: ALABASTER SW7008

LOCATION (ROOM #): ENTRY, BAR & LOUNGE, CONFERENCE

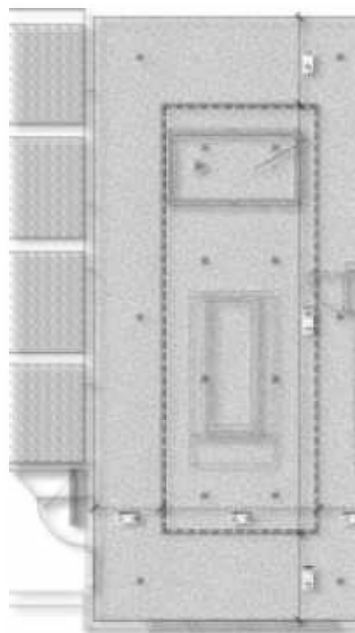


Square Can Lighting only in Clouds

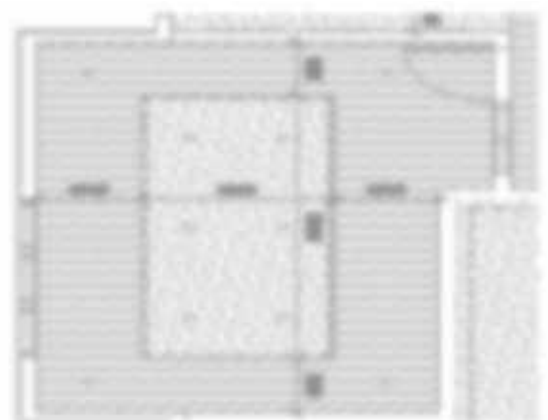
Back Lighting



ENTRY



BAR & LOUNGE



CONFERENCE

MATERIAL: DOOR STYLE

MANUFACTURER:

NAME: KNOTTY ALDER 2 PANEL / SHAKER SQUARE

COLOR: STAIN GRADE – GREENWOOD MW413

LOCATION (ROOM #): INTERIOR DOORS



Stain –
Greenwood
MW413



MATERIAL: DOOR HARDWARE

MANUFACTURER: KWIKSET

NAME: HALIFAX COLLECTION

MODEL #:

COLOR: MATTE BLACK

LOCATION (ROOM #): INTERIOR DOORS



Halifax Passage Door Lever with Square Rose



Halifax Keyed Door Lever with Square Rose

Kwikset



HALIFAX™ LEVER

Kwikset's Halifax Lever beautifully combines sophistication and simplicity. Available with either a round or square rose, this lever provides effortless style while providing alluring aesthetics.



Halifax Lever with
round rose in Satin Chrome



Halifax Lever with
square rose in Satin Chrome

#1 SELLING U.S. LOCK BRAND*

*Source: TraQline US quarterly brand unit share report, Q4 2006 through Q4 2020

MATERIAL: EXTERIOR DOOR

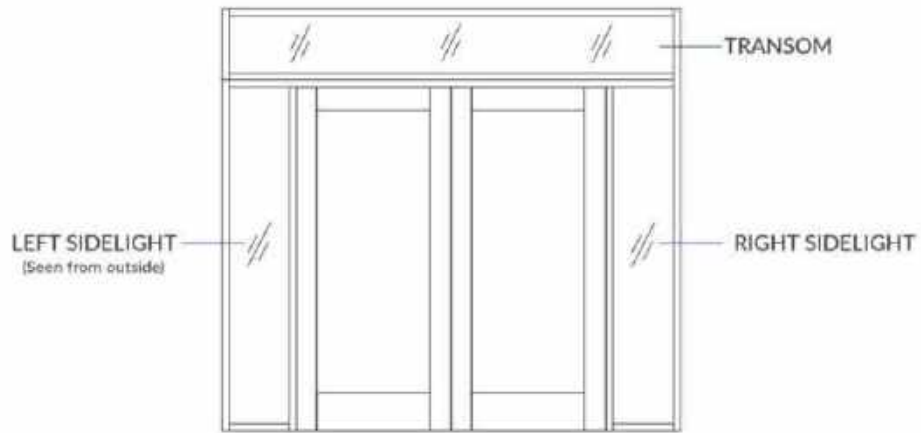
MANUFACTURER: REAL CRAFT
STYLE: MID-CENTURY MODERN
DOUBLE FRONT DOORS W/ SIDE WINDOW

WOOD SPECIES: RUSTIC ALDER

GLASS: CLEAR GLASS

FINISH: CLEAR SATIN

LINK: <https://realcraft.com/products/mid-century-modern-front-door-with-side-window?epik=dj0yJnU9czZvQVpLZGJyZXRiQm1WV2NzNm5MVjE3Y2tfV0loYllmcD0wJm49OER6Y2E1ZE5jcE9zLVBvdnRIWWQ5dyZ0PUFBQUFBR1laS2xJ&variant=3965040505660&>



MATERIAL: DOOR HARDWARE

MANUFACTURER: ASHLEY NORTON

NAME: URBAN / TUBULAR/ MDLES ESCUTCHEON

Escutcheon Plate:

13"x2-1/2"

18-1/8" x 3" Exterior & 10" x 2-1/2 Interior

Backset 2-3/4"

For doors that are 1-3/4" thick.

LEVER: APOLLO 450

COLOR: MATTE BLACK

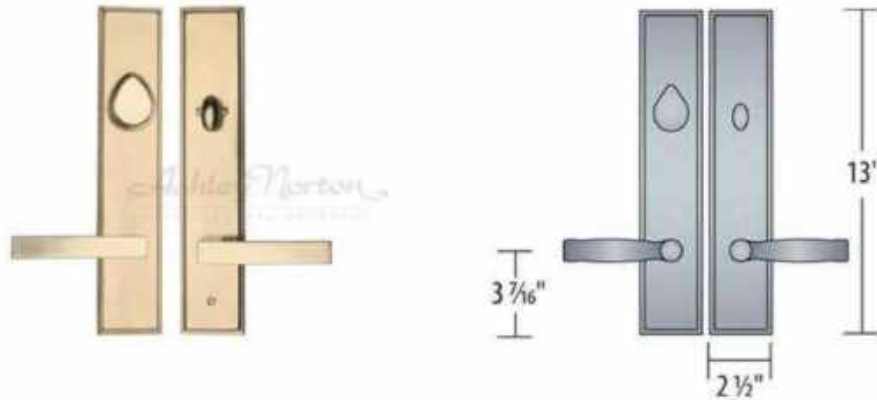
LOCATION (ROOM #): ENTRY DOOR



LEVER: APOLLO 450



Matt Black (TC)



SQLES Escutcheon

13" x 2 1/2"

Shown with Meridian (310) lever in Natural Bronze (NB) patina

Options

Available in 6 standard patinas, with your choice of levers or knobs.
Visit www.ashleynorton.com to view more options.

Functions



Available Patina Options

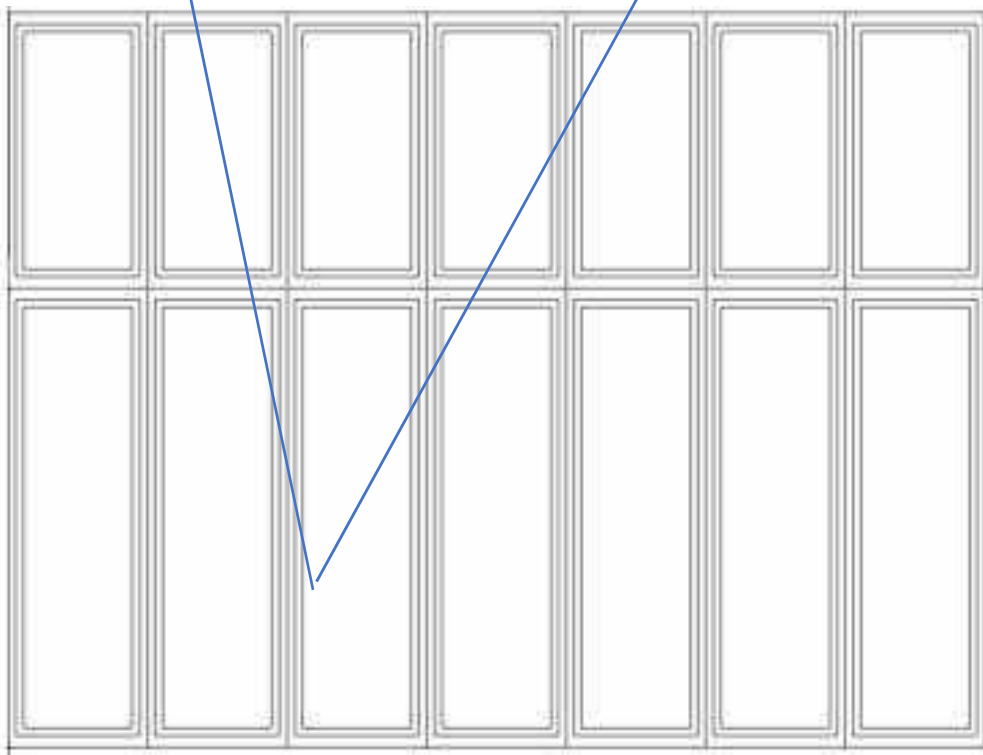
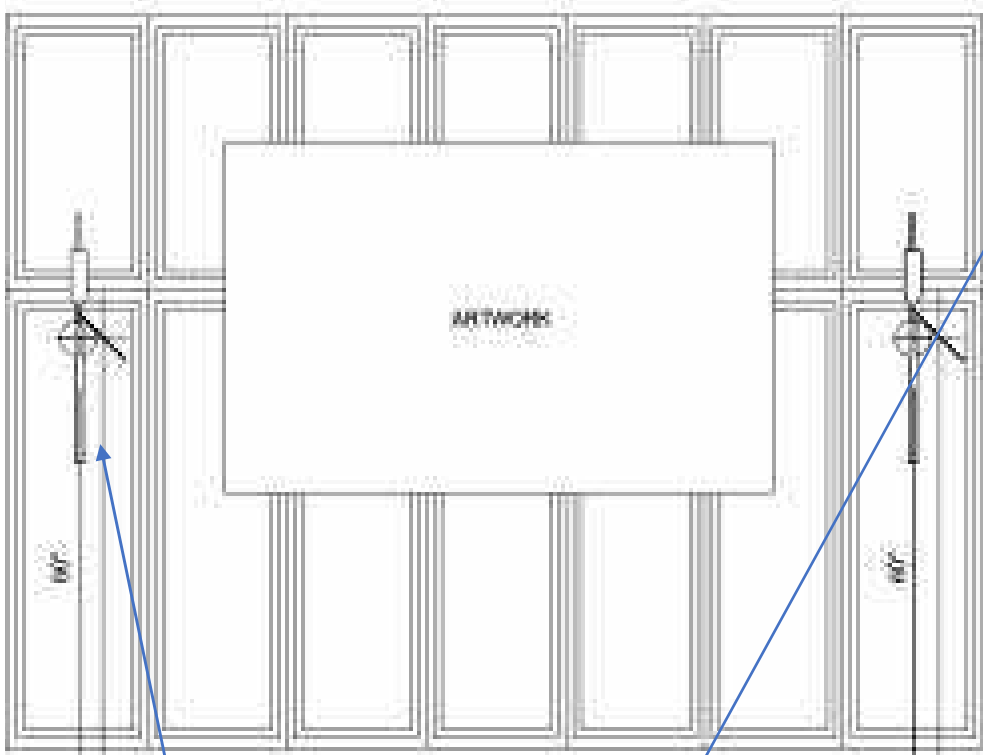


Available Lever Options



CLUB HOUSE

ENTRY WALLS



ACCENT PAINT:



Height of electrical box/sconces to be confirmed onsite by
Chris Gillam JGR Architects

CLUB HOUSE

LIGHTING



30 H x 6" W

VISUAL COMFORT & Co.

AEW1041MBKBBS: Extra Large Sconce with Midnight Black Shade



Dimensions:

Width: 6.88" **Extends:** 7.875"
Height: 30.0" **Wire:** 8" (color;Black/White)
Weight: 2.2 lbs. **Mounting Proc.:** Set Screw(s)
Connection: Mounted To Box

Bulbs:

1 - Candelabra Torpedo 60.0w Max. 120v Not included

Features:

- Easily converts to LED with optional replacement lamps
- Fixture may be mounted in the up or down position
- Meets Title 24 energy efficiency standards
- Title 24 compliant if used with Joint Appendix (JA8) approved light bulbs listed in the California Energy Commission Appliance database.

Material List:

1 Body - Steel - Burnished Brass

Safety Listing:

Safety Listed for Damp Locations

Instruction Sheets:

Trilingual (English, Spanish, and French) (COSMO_WALL)

Collection: Cosmo

UPC #:014817626001

Finish: Midnight Black and Burnished Brass (MBKBBS)

Shade / Glass / Diffuser Details:

Part	Material	Finish	Quantity	Item Number	Length	Width	Height	Diameter	Fitter Diameter	Shade Top Length	Shade Top Width	Shade Top Diameter
Shade	Steel	Midnight Black	1				5.88	6.88				

Backplate / Canopy Details:

Type	Height / Length	Width	Depth	Diameter	Outlet Box Up	Outlet Box Down
Back Plate			0.75	5.0	15.62	14.38

Shipping Information:

Package Type	Product #	Quantity	UPC	Length	Width	Height	Cube	Weight	Fr. Class	UPS Ship
Individual	AEW1041MBKBBS	1	014817626001	31.5	10.0	11.0	2.0	4.5	0	No
Master Pack	AEW1041MBKBBS	0	10014817626008							No

INSPIRATION
COMMUNITY ROOM
FIREPLACE
#109

IRON ORE

SW 7069

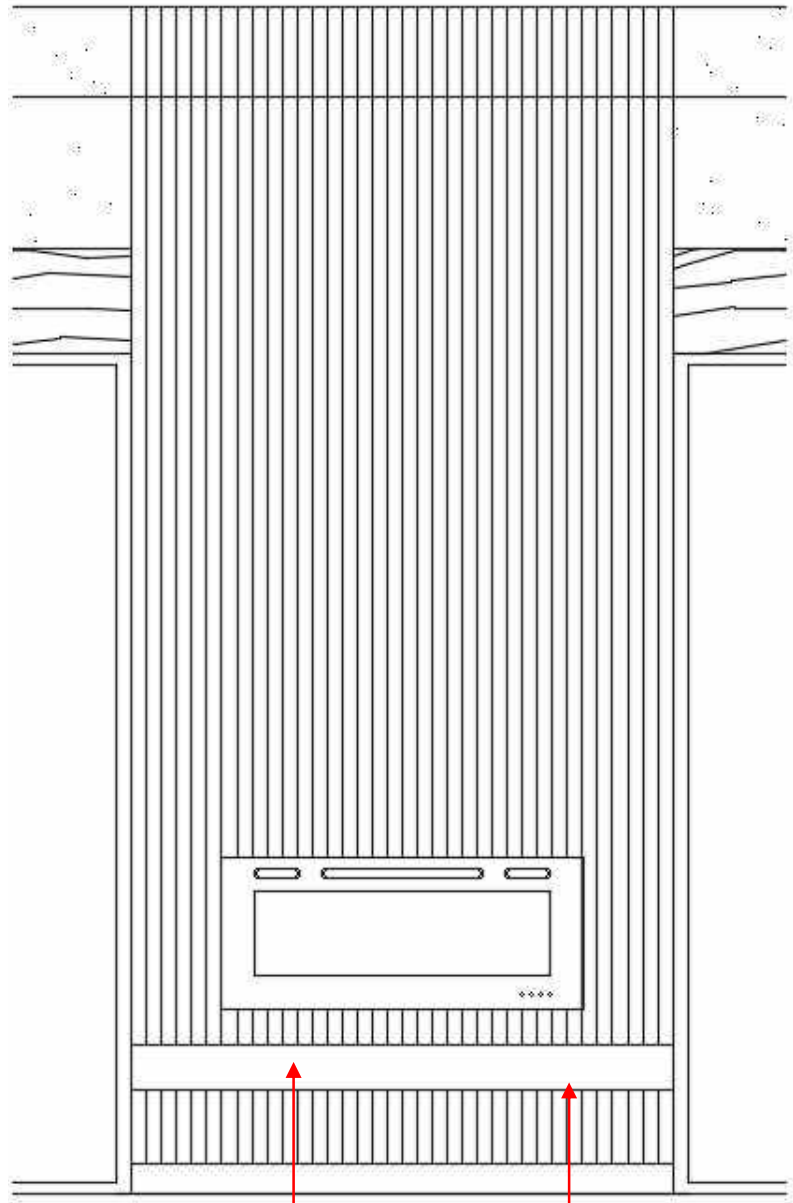


INTERIOR FIREPLACE ELEVATION

PAINT GRADE



IRON ORE
SW 7069

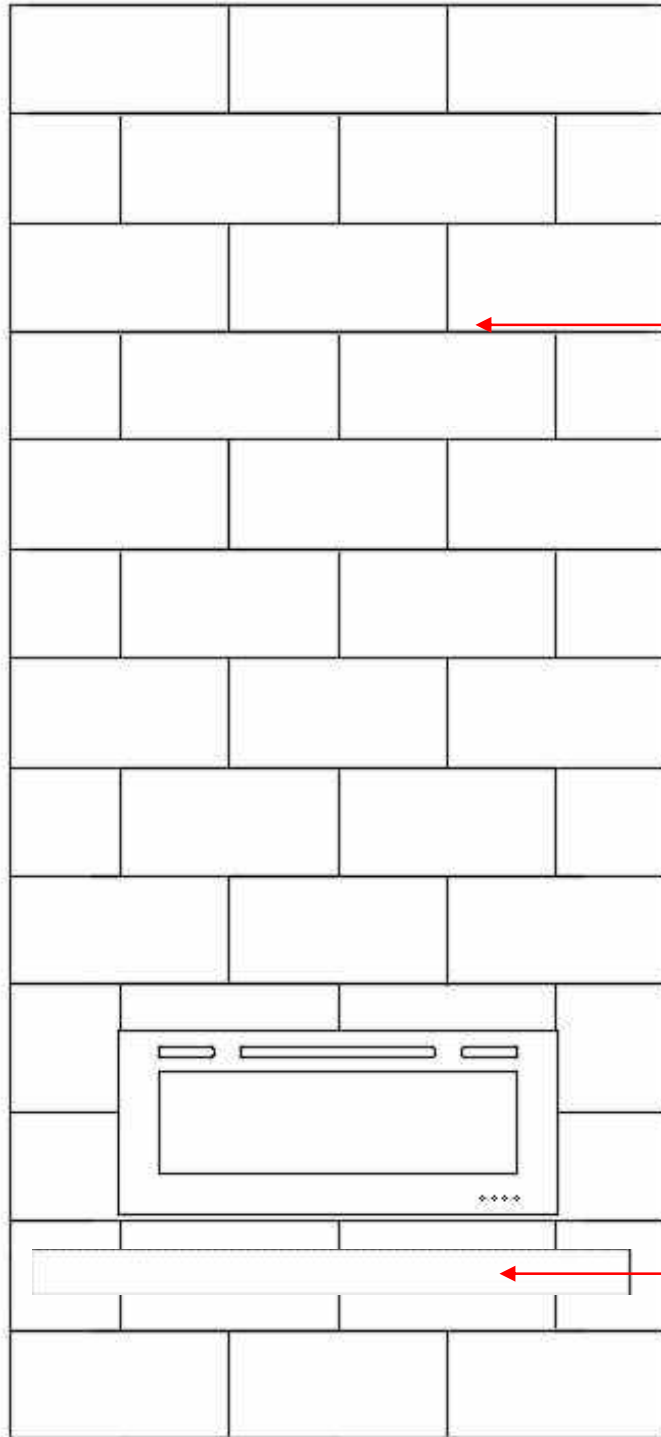


8" Ledge Nero Orion -
Honed Granite

Ledge 18"
from floor

EXTERIOR FIREPLACE ELEVATION

REAR PATIO
FIREPLACE



MANUFACTURER: DAL TILE
PRODUCT NAME: Unity -
Colorbody Porcelain
TILE TYPE: Porcelain
STYLE AND STYLE #: TEXTURED
COLOR AND COLOR #: BEIGE CO22
GROUT: TEC 940 ANTIQUE WHITE



8" Ledge Nero Orion - Honed
Granite



MATERIAL: TILE (PORCELAIN)

MANUFACTURER: DAL TILE

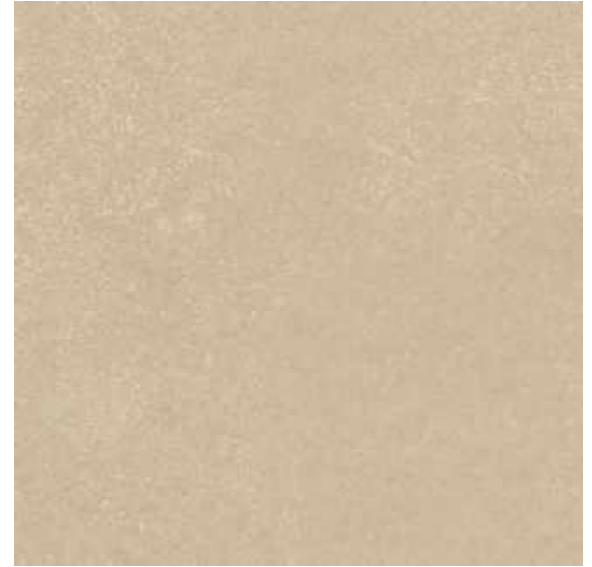
PRODUCT NAME: *Unity* – Colorbody Porcelain

TILE TYPE: Porcelain

STYLE AND STYLE #: TEXTURED

COLOR AND COLOR #: BEIGE CO22

LOCATION (ROOM#): REAR PATIO FIREPLACE



PRODUCT SPECIFICATION:

SIZE: 24" X 24"

TILE THICKNESS: 3/8"

GROUT JOINT SIZE: 1/8"

SHADE VARIATION: MEDIUM V2

INSTALLATION PATTERN: HORIZONTAL TRAITGHT LAY

DCOF OR COEFFICIENT OF FRICTION: ≥ 0.42

MOISTURE ABSORPTION: ASTM#: C373, RESULT: < 0.5%

BREAKING STRENGTH: ASTM#: C648, RESULT: > 450 LBS

CHEMICAL RESISTANCE: ASTM#: C650, RESULT: RESISTANT

ABRASION RESISTANCE: ASTM#: MOHS, RESULT: 8.0

GROUT: TEC 940 ANTIQUE WHITE

COMMUNITY ROOM
FIREPLACE
#109

REAR PATIO
FIREPLACE

MANUFACTURER: WOODLAND DIRECT

PRODUCT NAME: SIMPLIFIRE-ALLUSION ELECTRIC FIREPLACE

SIZE: 48"

COLOR: BLACK / CLEAR

LOCATION (ROOM #): COMMUNITY ROOM #109 / REAR PATIO

- Fuel Type: Electric
- Type: Linear
- Style: Modern
- Heat Output: 5,000 BTUs
- Location: Indoor
- Height: 20 1/4"
- Mounting Type: Built-In
- Depth: 5 15/16"
- Viewing Height: 11 1/4"
- Viewing Width: 39 3/8"
- Back Width: 42 13/16"
- Front Width: 48 7/16"
- Watts: 1500 Watts
- Amp Rating: 15 Amps
- Voltage: 120 Volts
- Remote Control Type: Multi-Function



https://www.woodlanddirect.com/simplifire-allusion-electric-fireplace---48/613731.html?a=51940_11=508-&gad_source=1&gclid=EAlaIQobChMI6WylP7fhQMVCAKtBh3SUgOYEAYASAAEgJErvD_BwE&st-t=text

MATERIAL: ISLAND DETAIL – USE CABINET SPECS FROM GREEN VALLEY RANCH

STAIN: USE STAIN SPECS FROM GREEN VALLEY RANCH

LOCATION (ROOM #): BAR & LOUNGE



ISLAND DETAILS

- Wood Stained Top and Legs
- Metal Wrapped Around Edge
- LED Backlighting
- Two Legs & Open At Each End
- Foot Rail At Bottom to Mirror Oval Top
- Finish: TBD – Light stain



Undercounter Lighting

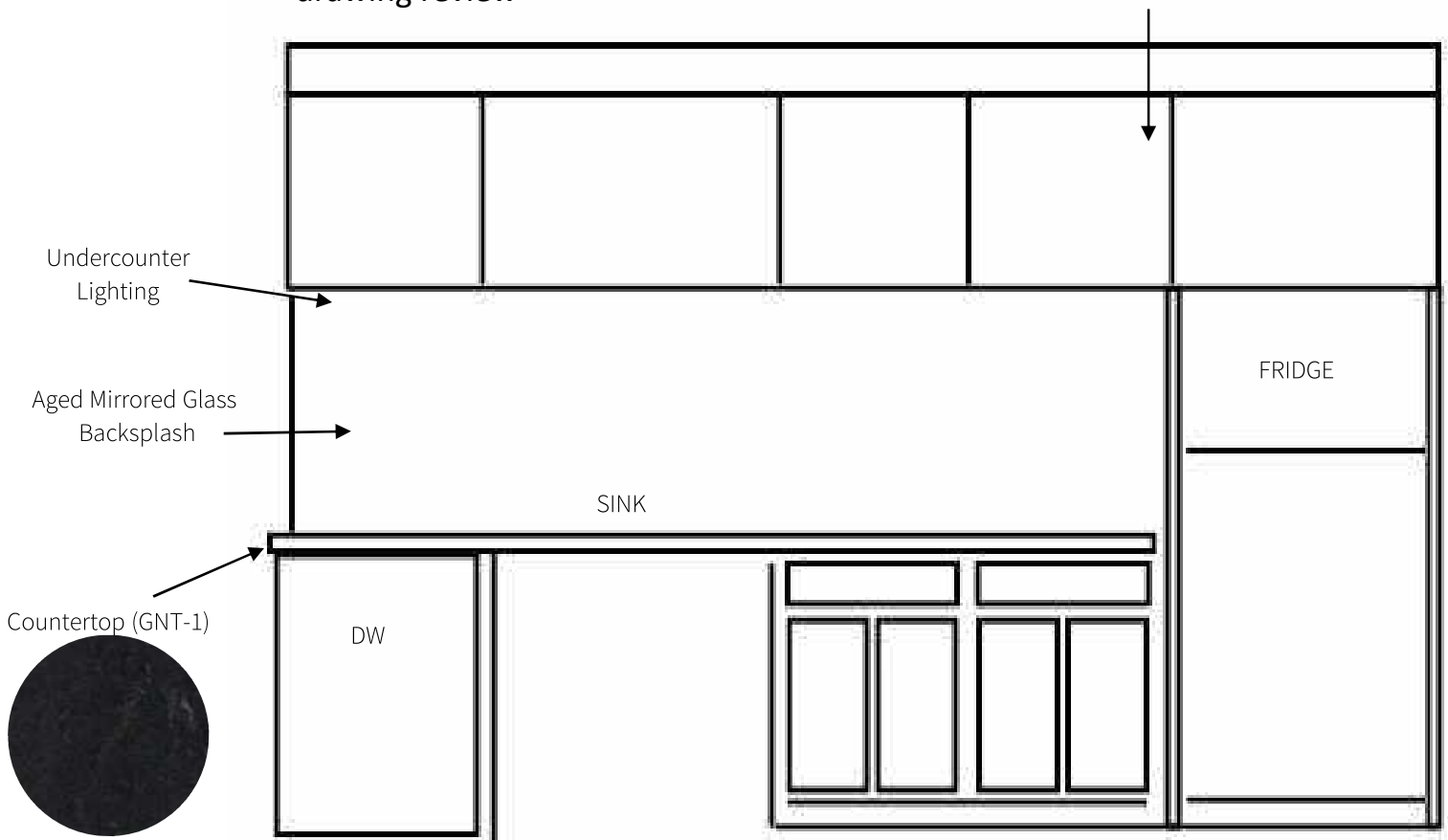


Slab Door Fronts

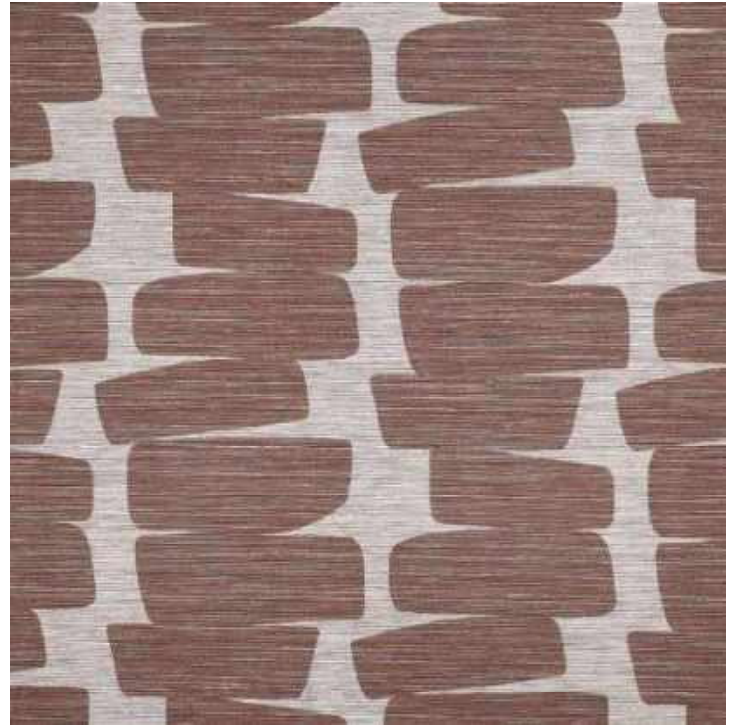
Aged Mirrored Glass Backsplash

Raise overall height of upper cabinets below top of exterior windows – Request cabinet drawing review

Slab Doors – Stained Dark Touch Latch Open

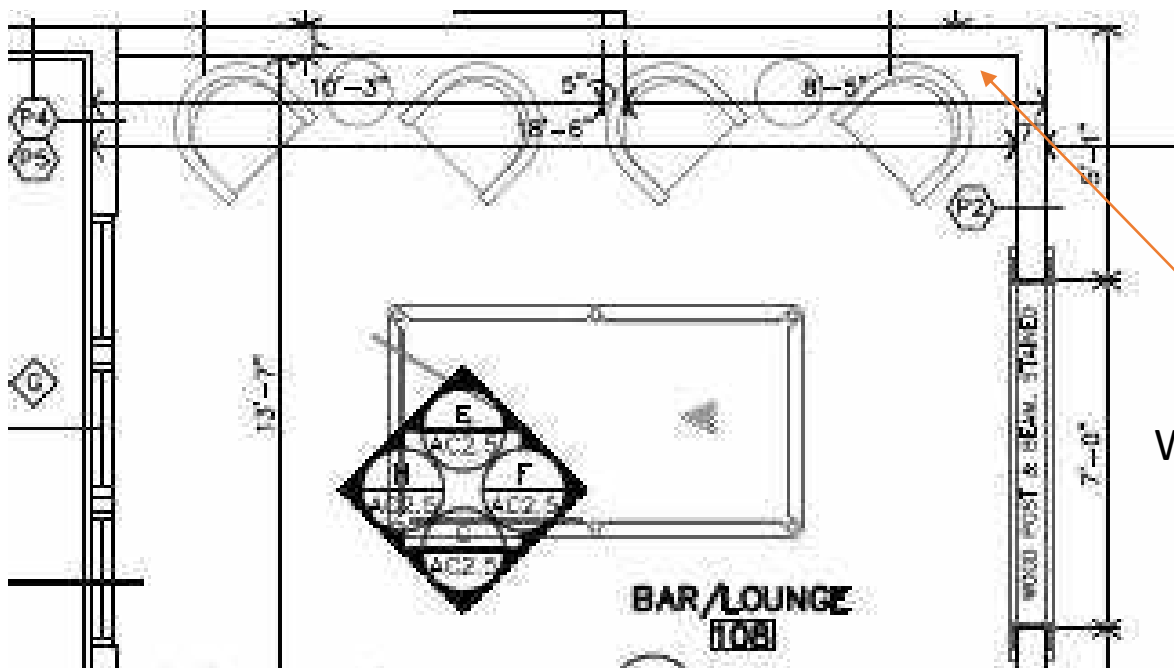


MATERIAL: VINYL STACKED WALLPAPER
COLOR: 10332 BAKED CLAY
LOCATION (ROOM #): BAR & LOUNGE #108



Width Trims to 54 in (137.2 cm)
Bolt Size 30 Yards
Minimum Order 15 Yards
Order Increments 5 Yards
CFA Availability Not Applicable
Cut Availability No

Vertical Repeat 21 in (53.3 cm)
Horizontal Repeat 21.5 in (54.6 cm)
Fire Rating ASTM E84 Class A
Maintenance Type II Washable
Seaming Level I, Virtually Seamless
Binder Vinyls



Wallpaper location

PHILLIP JEFFRIES



10332 : Vinyl Stacked Baked Clay

Geometric and modern, this Type II performance vinyl wallcovering has the look and feel of a glamorous silk-like material and is virtually seamless. Engineered for high traffic and damp areas, this wallcovering is durable, low VOC, and anti-microbial. Perfectly suited for residential and commercial use.

MATERIAL: PLUMBING FAUCET

VENDOR: BLANCO

COLLECTION: QUATRUS RO ADA

MODEL #: 442079

FINISH: STAINLESS

SIZE: 18" X 25"

LOCATION: BAR / LOUNGE #108



Product Features:

- ADA compliant when installed according to ADA
- Bowl depth: 5-1/2"
- Required outside cabinet: 30"
- Cutout Size: Template provided with approximate 1/8" reveal
- Satin Finish
- 304 Series Stainless Steel
- 18 Gauge Stainless Steel
- 18/10 Chrome-Nickel Content
- Limited lifetime warranty

MATERIAL: PLUMBING FAUCET

VENDOR: DELTA

COLLECTION: TRINSIC

ITEM: TRINSIC SINGLE HANDLE PULL-DOWN

MODEL #: 9159-BL-DST

FINISH: MATTE BLACK

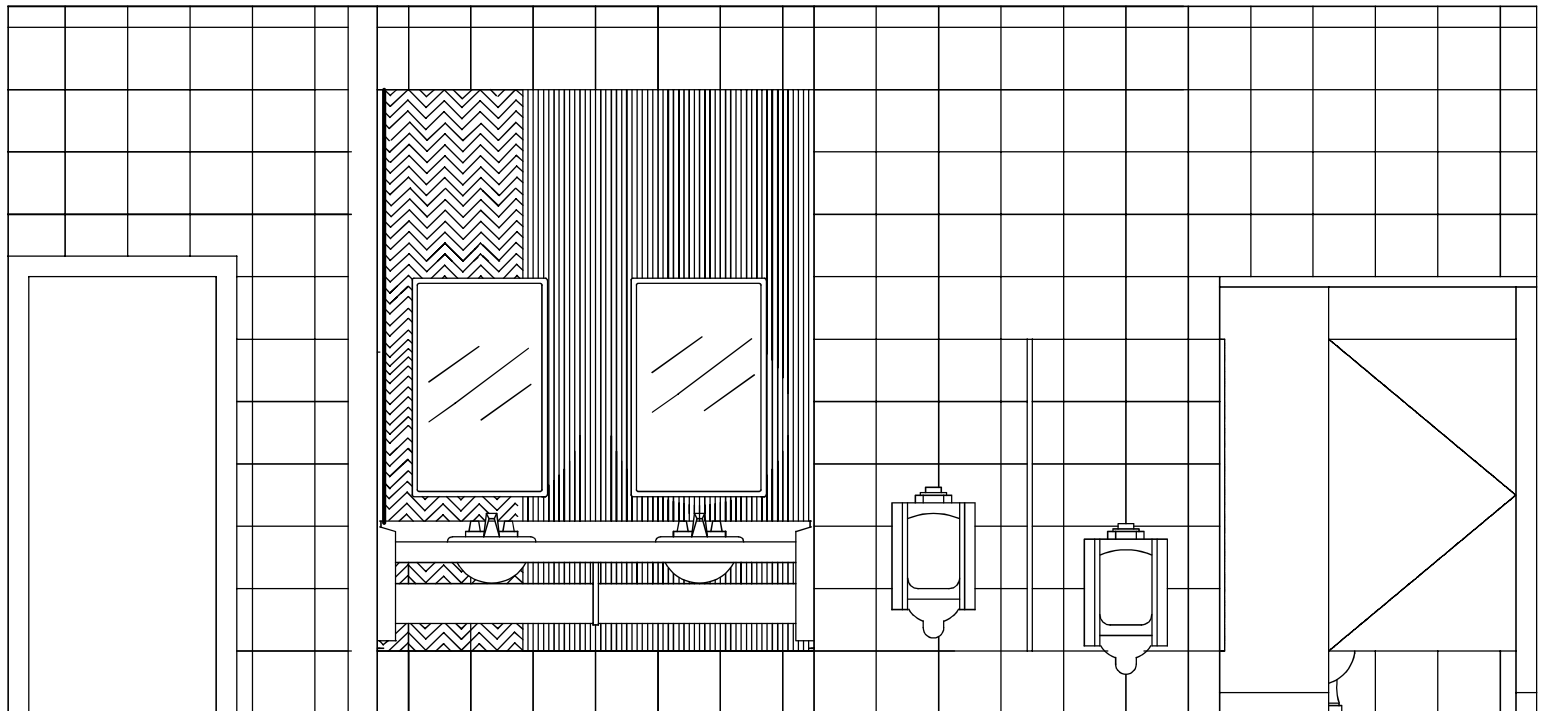
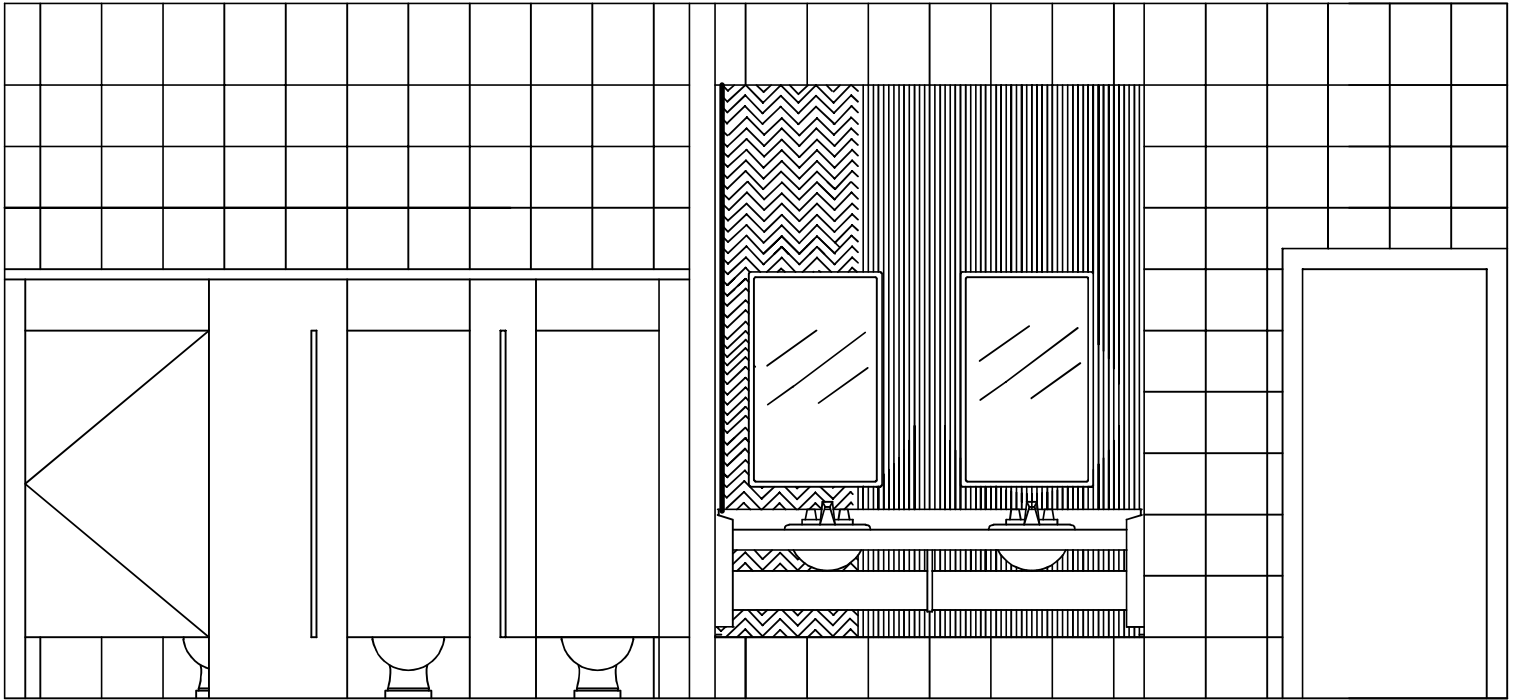
FEATURES: TOUCH20 TECHNOLOGY

LOCATION: BAR / LOUNGE #108



PUBLIC BATHROOM

#117 & #118



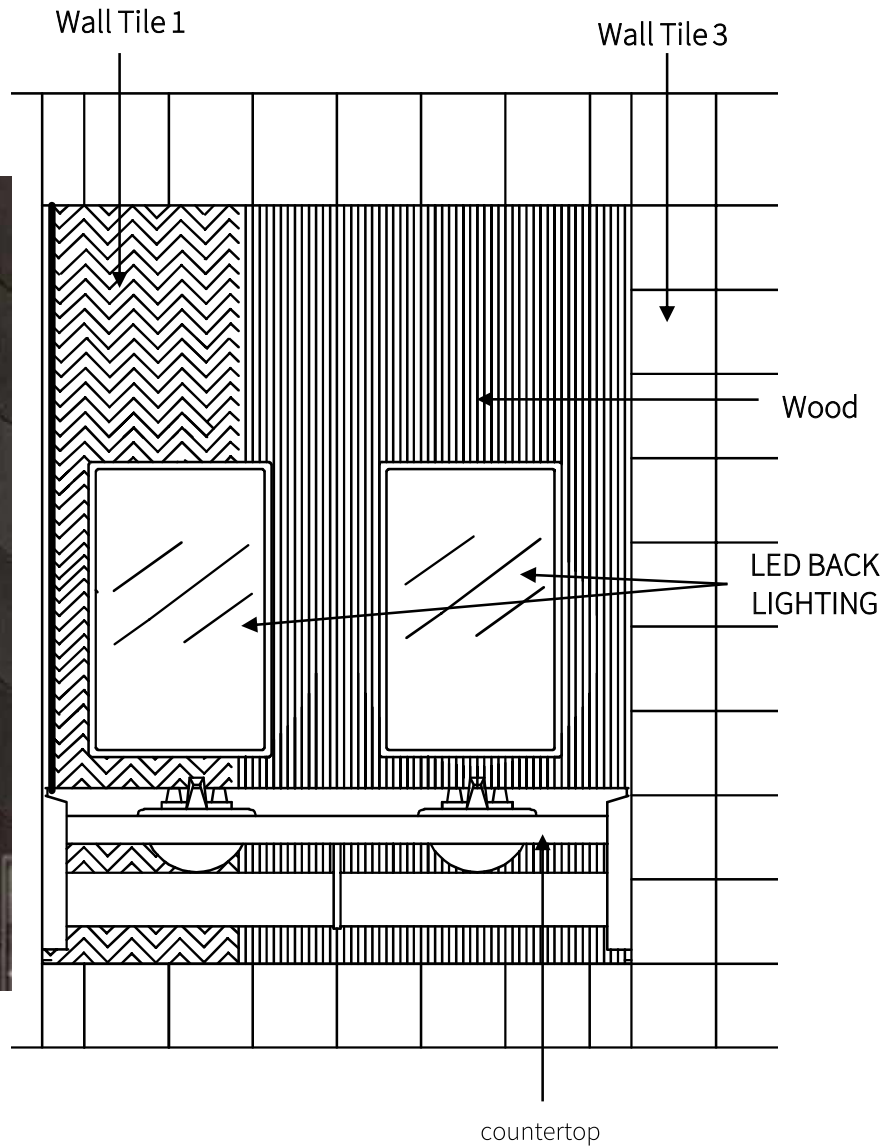
MATERIAL: PARTITIONS

COLOR: WILSONART STANDARD LAMINATE
Pinnacle Walnut
7992-38

LOCATION (ROOM #): RESTROOM 117 & 118



CLUB HOUSE
RESTROOM
117 & 118



Greenwood
MW413



Countertop
(GNT-1)



FLOOR TILE
TILE (T-3)



WALL TILE 1



WALL TILE - 3

MATERIAL: Tile

MANUFACTURER: DAL TILE

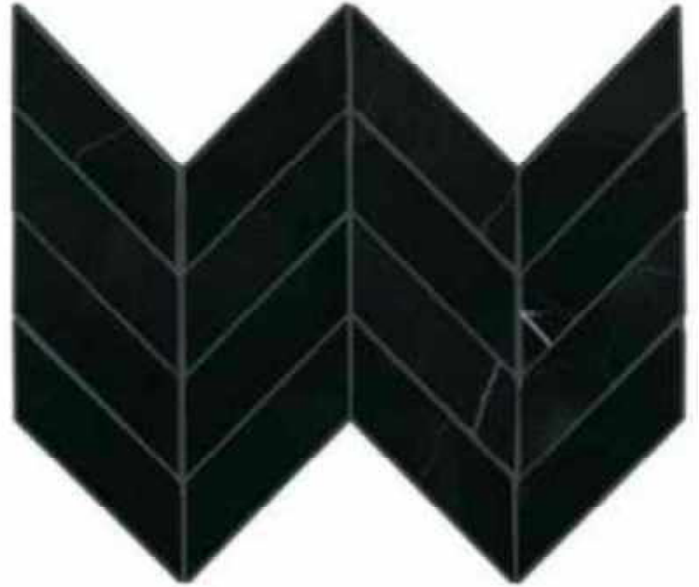
PRODUCT NAME: NERO MARQUINA

TILE TYPE: NATURAL STONE

COLOR AND COLOR #: BLACK M462

FINISH: POLISHED

LOCATION (ROOM #): VANITY WALL VERTICAL
ROOM #117 & #118



PRODUCT SPECIFICATION:

SIZE: CHEVRON

TILE THICKNESS: 3/8"

GROUT JOINT SIZE: 1/8"

SHADE VARIATION: MEDIUM

INSTALLATION PATTERN: STRAIGHT LAY –
VERTICAL

GROUT: 941 RAVEN TEC



MATERIAL: Tile

MANUFACTURER: DAL TILE

PRODUCT NAME: MODERN LINEAR

TILE TYPE: PORCELAIN

COLOR AND COLOR #: MEDIUM TAUPE ML62

FINISH: MATTE

LOCATION (ROOM #): Wall Tile 3 #117 & #118

PRODUCT SPECIFICATION:

SIZE: 12 X 24

TILE THICKNESS: 3/8"

GROUT JOINT SIZE: 1/8"

SHADE VARIATION: MEDIUM V2

INSTALLATION PATTERN: STRAIGHT LAY

GROUT: 934 DELOREAN GRAY TEC

MOISTURE ABSORPTION: ASTM C373

BREAKING STRENGTH: ASTM C648

CHEMICAL RESISTANCE: ASTM MOHS

ABRASION RESISTANCE: ASTM C650

GROUT: TEC 973 WARM TAUPE





MATERIAL: Tile

MANUFACTURER: DAL TILE

PRODUCT NAME: MODERN LINEAR

TILE TYPE: PORCELAIN

COLOR AND COLOR #: TAUPE ML62

FINISH: MATTE

LOCATION (ROOM #): T3 TILE FLOOR IN
ROOM #117 & #118

PRODUCT SPECIFICATION:

SIZE: 24 X 24

TILE THICKNESS: 3/8"

GROUT JOINT SIZE: 1/8"

SHADE VARIATION: MEDIUM V2

INSTALLATION PATTERN: STRAIGHT LAY

GROUT: 934 DELOREAN GRAY TEC

MOISTURE ABSORPTION: ASTM C373

BREAKING STRENGTH: ASTM C648

CHEMICAL RESISTANCE: ASTM MOHS

ABRASION RESISTANCE: ASTM C650

GROUT: TEC 973 WARM TAUPE



MATERIAL: Tile

MANUFACTURER: DAL TILE

PRODUCT NAME: MODERN LINEAR

TILE TYPE: PORCELAIN

COLOR AND COLOR #: MEDIUM TAUPE ML62

FINISH: MATTE

LOCATION (ROOM #): Wall Tile 3 #117 & #118

PRODUCT SPECIFICATION:

TRIM OPTIONS:

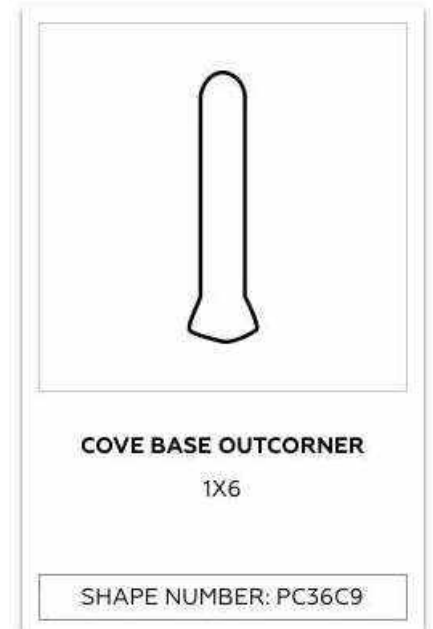
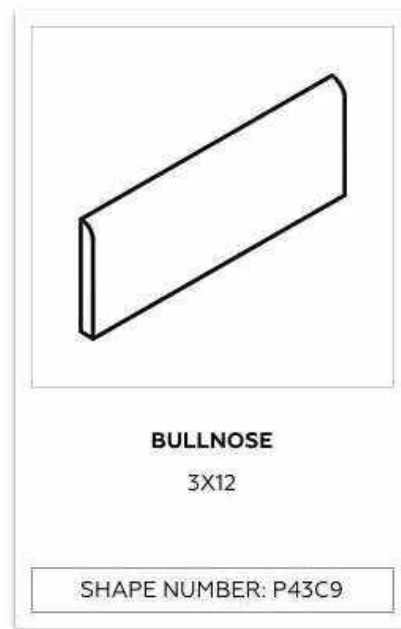
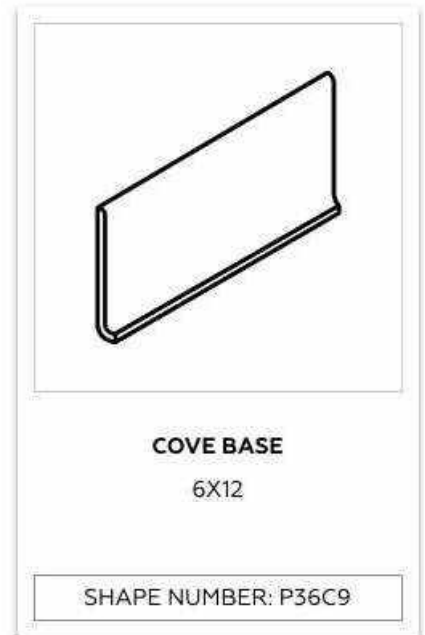
#P36C9 COVE BASE 6 x 12

#PC36C9 COVE BASE CORNER

OUTCORNER 1X6

#P43C9 BULLNOSE 3 X 12

GROUT: TEC 934 DELOREAN GRAY



MATERIAL: UNDERCOUNTER SINK

MANUFACTURER: AMERICAN STANDARD

NAME: BOULEVARD

MODEL #: 0610.000.020

COLOR: WHITE

LOCATION (ROOM #): RESTROOM 117 & 118 – VANITY SINK



LAVATORY SINK OPTIONS

American Standard 0610.000.020





BARrier FREE

BOULEVARD® UNDERCOUNTER SINK VITREOUS CHINA

BOULEVARD® UNDERCOUNTER SINK

- ❑ **0610.000 Unglazed Rim**
 - Rectangular under mount sink with unique tapered interior bowl
 - Made from vitreous china
 - Unglazed rim
 - Front overflow
 - Supplied with mounting kit (047194-0070A) and template



Nominal Dimensions:

20-1/4" x 16"
(514 x 406mm)

Bowl Size:

17" (432mm) wide
13" (330mm) front to back
6" (152mm) deep

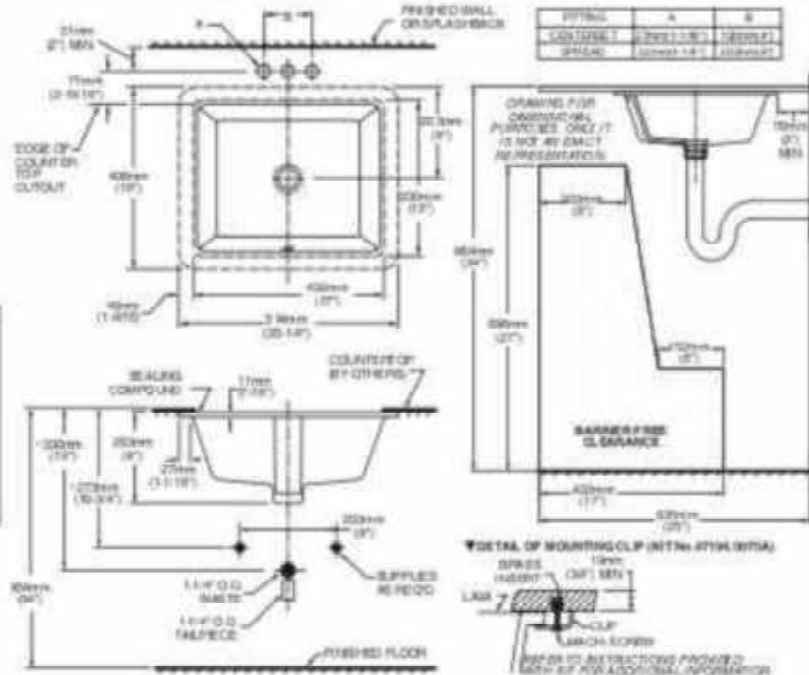
Compliance Certifications - Meets or Exceeds the

- Following Specifications:
- ASME A112.19.2/CSA B45.1

To Be Specified:

- ❑ Color: ❑ White ❑ Linen
- ❑ Faucet:
- ❑ Faucet Finish:
- ❑ Supplies:
- ❑ 1-1/4" Trap

* See faucet section for additional models available.



NOTES:
WE RECOMMEND USING BASIN AS A TEMPLATE TO DETERMINE PROPER CONTOUR. CUT COUNTERTOP 38MM (1-1/2") INSIDE BASIN CONTOUR.
* DIMENSIONS SHOWN FOR LOCATION OF SUPPLIED AND "P" TRAP ARE SUGGESTED.

▼ UNDERCOUNTER MOUNTING KIT SUPPLIED WITH SINK. FITTING IS NOT INCLUDED WITH FIXTURE AND MUST BE ORDERED SEPARATELY.
SEALING COMPOUND SUPPLIED BY OTHERS.

IMPORTANT: Dimensions of fixtures are nominal and may vary within the range of tolerances established by NSF Standard A112.19.2. These measurements are subject to change or cancellation. No responsibility is assumed for use of superseded or voided pages.

MEETS THE AMERICANS WITH DISABILITIES ACT GUIDELINES AND ICC ANS/A117.1 ACCESSIBLE AND USABLE BUILDINGS AND FACILITIES - CHECK LOCAL CODES.

Install lavatory 864mm (34") from finished floor.
Lavatory installed 51mm (2") minimum from front edge of countertop provides 686mm (27") knee clearance area.

MATERIAL: Countertop

PRODUCT INFORMATION:

MANUFACTURER: DALTILE

COUNTERTOP MATERIAL: GRANITE

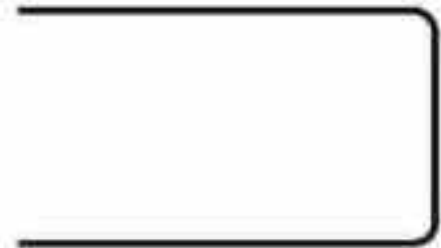
COLOR: ABSOLUTE BLACK G771

COLOR: 3/8"

EDGE: STRAIGHT

FINISH: HONED

LOCATION (ROOM #): RESTROOM 117 & 118 – VANITY SINK



Straight Edge

MATERIAL: PLUMBING FAUCET

PRODUCT INFORMATION:

VENDOR: DELTA

COLLECTION: ZURA

ITEM: ZURA TOUCH20 SINGLE HOLE LAV FAUCET

MODEL #: 574T-BL-DST

FINISH: MATTE BLACK

FEATURES: TOUCH20 TECHNOLOGY

LOCATION: MEN'S AND WOMENS RESTROOM 117 & 118



MATERIAL: PLUMBING FAUCET

PRODUCT INFORMATION:

VENDOR: DELTA

COLLECTION: P-Trap

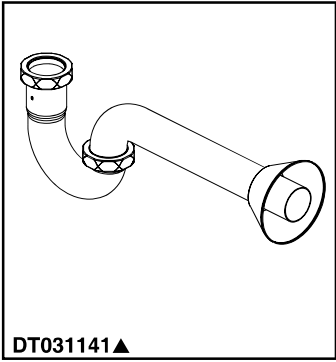
ITEM: P-Trap

MODEL #: DTO31141-BL

FINISH: MATTE BLACK

LOCATION: MEN'S AND WOMENS RESTROOM 117 & 118

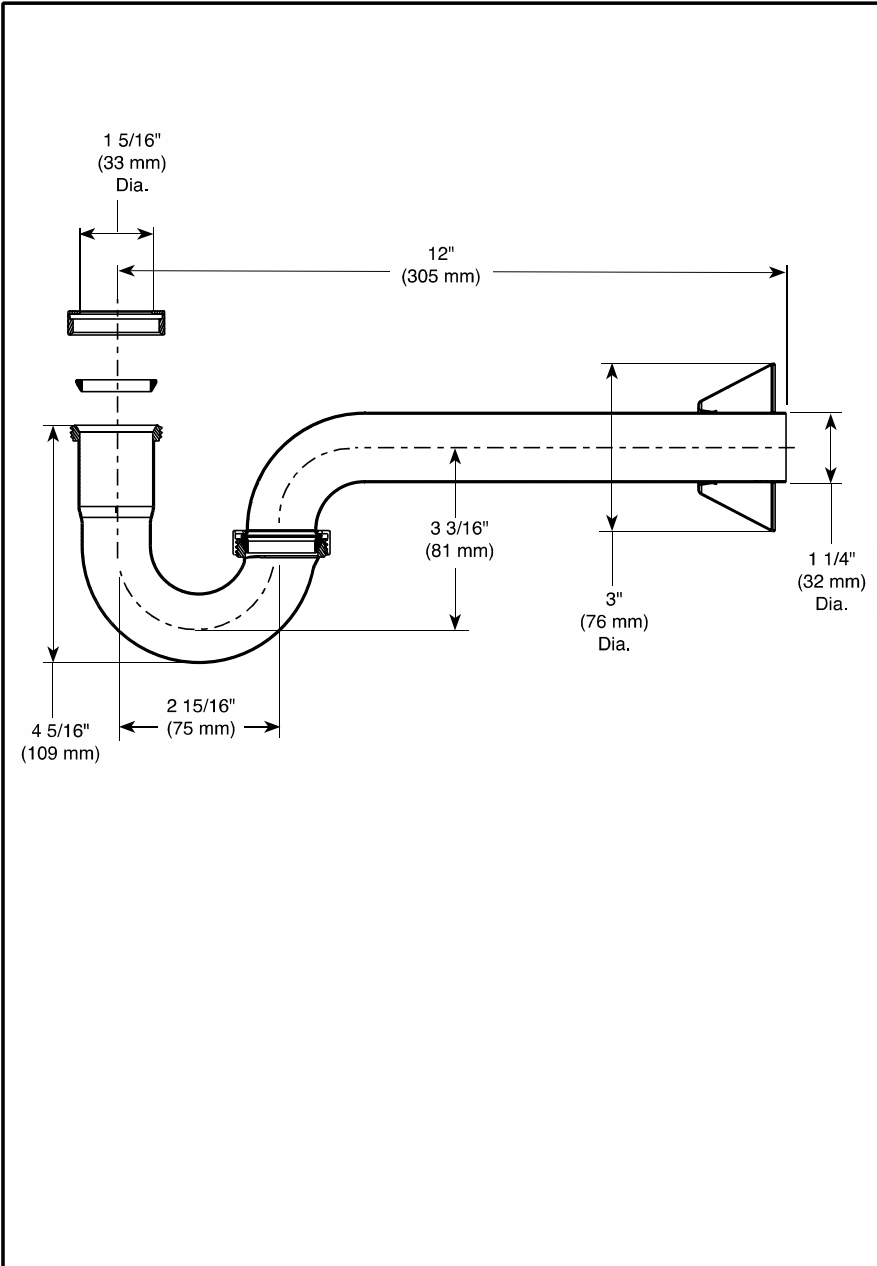




DT031141▲

Submitted Model No.: _____

Specific Features: _____



▲ Designate proper finish suffix

Delta reserves the right (1) to make changes in specifications and materials, and (2) to change or discontinue models, both without notice or obligation. Dimensions are for reference only. See current full-line price book or www.deltafaucet.com for finish options and product availability.

DSP-A-DT031141 Rev. A



see what Delta can do™

ACCESSORIES

■ P-Trap

STANDARD SPECIFICATIONS:

- Finished to match Delta products.
- 20 Ga. brass construction.
- Adjustable rotation on tube outlet.
- Slip-joint inlet.
- 12" straight arm.
- Escutcheon included.

WARRANTY

- Parts and Finish - Lifetime limited warranty; or for commercial purchasers, 10 years for multi-family residential (apartments and condominiums) and 5 years for all other commercial uses, in each case from the date of purchase.
- Electronic Parts and Batteries (if applicable) - 5 years from the date of purchase; or for commercial purchasers, 1 year from the date of purchase. No warranty is provided on batteries.

COMPLIES WITH:

- ASME A112.18.2 / CSA B125.2

Delta Faucet Company

55 E. 111th Street, Indianapolis, Indiana 46280
 350 South Edgeware Road, St. Thomas, Ontario Canada N5P 4L1
 © 2021 Delta Faucet Company

MATERIAL: Stainless Steel Grab Bar

PRODUCT INFORMATION:

MANUFACTURER: BOBRICK

STYLE AND STYLE #: B-9806 x 24

SIZE: 24"

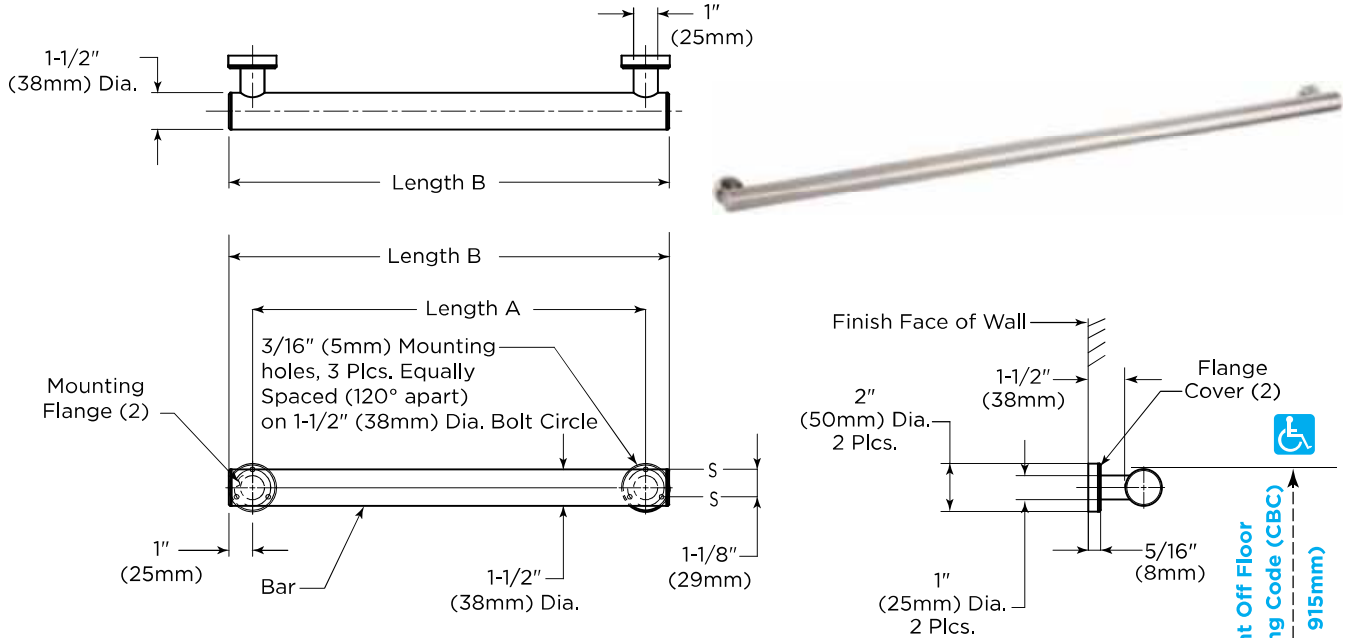
COLOR AND COLOR #: Black MBLK

LOCATION (ROOM #): Women # 117 Men # 118

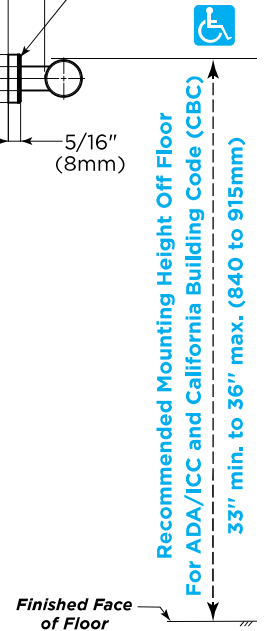


Specify Finish Required

- Stainless Steel, Satin Finish
- Matte Black Finish, add suffix ".MBLK" to model number, see table below.



Standard B-9806 Series Grab Bars			
Satin Finish Model	Matte Black Finish Model	Accessible Length A	Overall Length B
9806x18	9806x18.MBLK	18" (457mm)	20" (510mm)
9806x24	9806x24.MBLK	24" (610mm)	26" (660mm)
9806x30	9806x30.MBLK	30" (762mm)	32" (813mm)
9806x36	9806x36.MBLK	36" (914mm)	38" (965mm)
9806x42	9806x42.MBLK	42" (1067mm)	44" (1120mm)
9806x48	9806x48.MBLK	48" (1219mm)	50" (1270mm)



ADA/CBC Installation Guidance

Recommended Mounting Heights:

ADA/ICC/CBC: 33" min. to 36" above finished floor (AFF)

MATERIALS:

Grab Bar — Type 303, 14-gauge 1/16" (2mm) stainless steel tubing with satin finish. 1-1/2" (38mm) outside diameter. Clearance between the grab bar and the wall is 1-1/2" (38mm).

Concealed Mounting Flanges — Type 303, 5/16" (8mm) thick, machined solid stainless steel with satin finish. End flanges 2" (50mm) diameter with three holes for attachment to wall.

Flange Covers — Type 303, 1/8" (3mm) thick, machined solid stainless steel with satin finish. 2" (50mm) diameter. Each cover is concealing the mounting screws.

Support Post — Tubing is connected to Mounting Flanges via a metric M8 hex screw, covered by a machined solid support post, 1/4" (6mm) wall thickness, 1" (25mm) outer diameter. Support post connects grab bar to mounting flange.

continued . . .

MATERIAL: BLACK METAL FRAME MIRROR

MANUFACTURER: MIRROR HOME

STYLE AND STYLE #: 20622

SIZE: 26" W X 42" L

FINISH: BLACK NICKEL

WEIGHT: 44 POUNDS

LOCATION (ROOM #): Women # 117 Men # 118

Mount Type : Wall Mount

Mirror Material: Glass

Frame Material : MIRROR, STEEL

Lighting Included :No

Plug-In : No

Backing Layers: No Backing Layers

Imported :Yes

Frame Design :Classic

Website: <https://www.mirrorhome.com/mirrors/20423-3392.html>



MIRROR HOME



20423

DIMENSIONS

26"W X 42"H X 1-1/4"D

MATERIAL

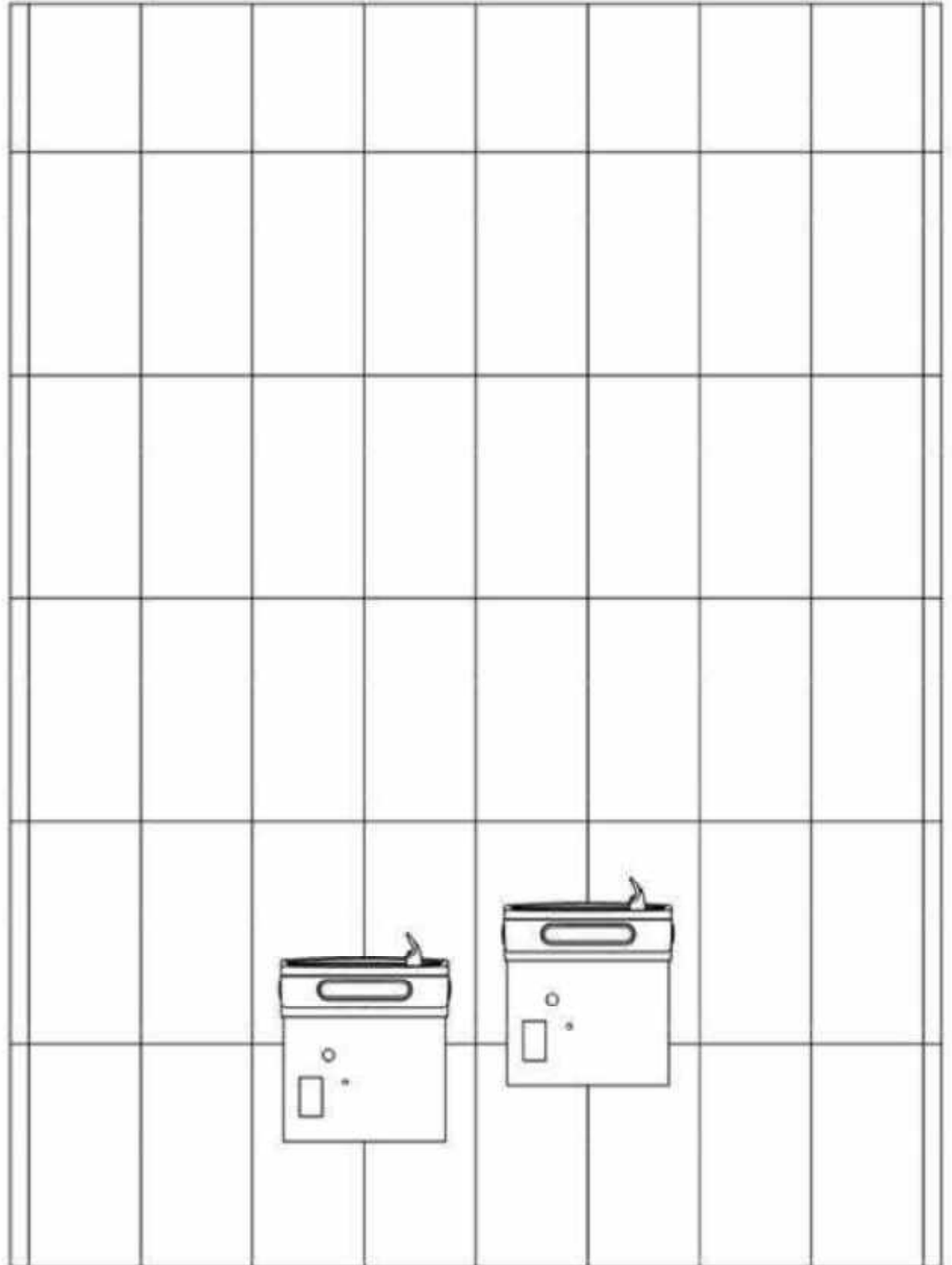
STAINLESS STEEL, WOOD & MIRROR

FINISH

POLISHED STAINLESS STEEL

WEIGHT

44 LB



MATERIAL: TILE (PORCELAIN)

MANUFACTURER: DAL TILE

PRODUCT NAME: FABRIC ART

TILE TYPE: Porcelain

STYLE AND STYLE #: ASHEN STEEL PRISM

COLOR AND COLOR #: MK72

LOCATION (ROOM#): HALL #119 WALL TILE- 4 AT WATER FOUNTAIN.

PRODUCT SPECIFICATION:

SIZE: 12X24

TILE THICKNESS: 3/8"

GROUT JOINT SIZE: 1/8"

SHADE VARIATION: MEDIUM V2

INSTALLATION PATTERN: STRAIGHT LAY VERTICAL

DCOF OR COEFFICIENT OF FRICTION: ≥ 0.42

MOISTURE ABSORPTION: ASTM#: C373, RESULT: < 0.5%

BREAKING STRENGTH: ASTM#: C648, RESULT: > 450 LBS

CHEMICAL RESISTANCE: ASTM#: C650, RESULT: RESISTANT

ABRASION RESISTANCE: ASTM#: MOHS, RESULT: 8.0

GROUT: TEC 934 DELOREAN GRAY



MATERIAL: Tile

MANUFACTURER: DAL TILE

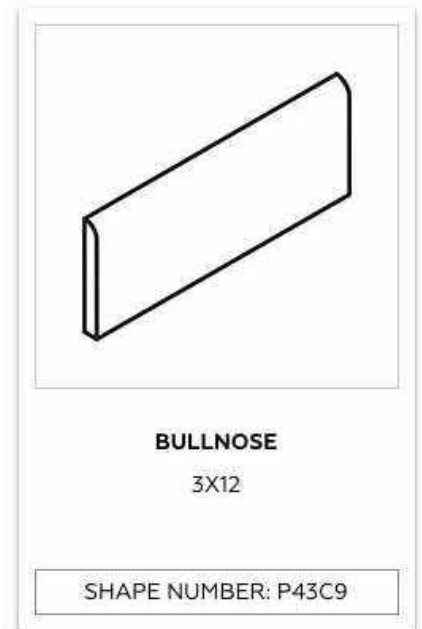
PRODUCT NAME: FABRIC ART

TILE TYPE: Porcelain

STYLE AND STYLE #: MEDIUM GRAY

COLOR AND COLOR #: MT53

LOCATION (ROOM#): HALL #119 WALL TILE- 4 AT WATER FOUNTAIN.



PRODUCT SPECIFICATION:

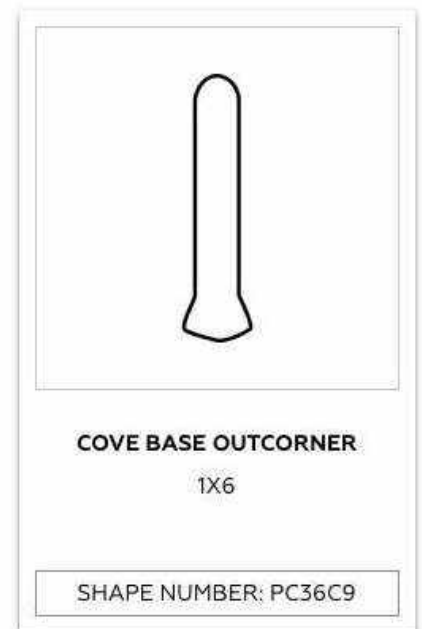
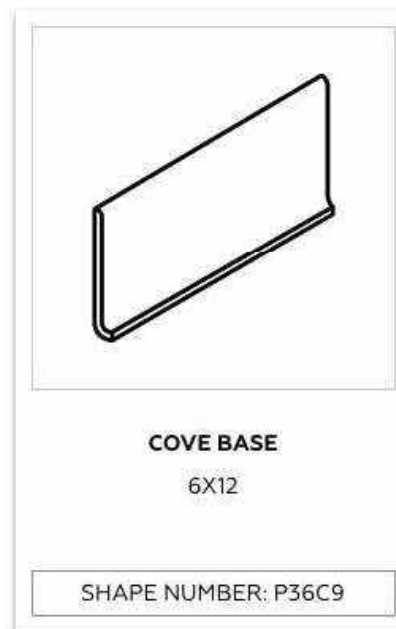
TRIM OPTIONS:

#P36C9 COVE BASE 6 x 12

#PC36C9 COVE BASE CORNER
OUTCORNER 1X6

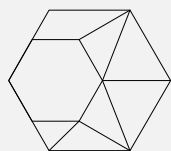
#P43C9 BULLNOSE 3 X 12

GROUT: TEC 934 DELOREAN GRAY

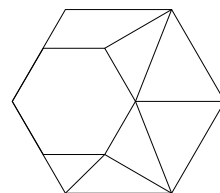


COLLECTIVE

DESIGN STUDIO



UNITS



The Reserves
at
Eagle Point



TRIM: SW7008 ALABASTER
CEILING: SW7008 ALABASTER



WALLS: SW9166 DRIFT OF MIST

**CABINETRY STAIN & HARDWARE FINISH
REQUESTED FOR REVIEW FOR APPROVAL**



MATERIAL: LVT

MANUFACTURER:

PRODUCT NAME:

TILE TYPE: LVT

COLOR AND COLOR #:

LOCATION (ROOM #): UNITS

**LVT SAMPLE REQUESTED FOR
REVIEW & APPROVAL**

MATERIAL: Tile

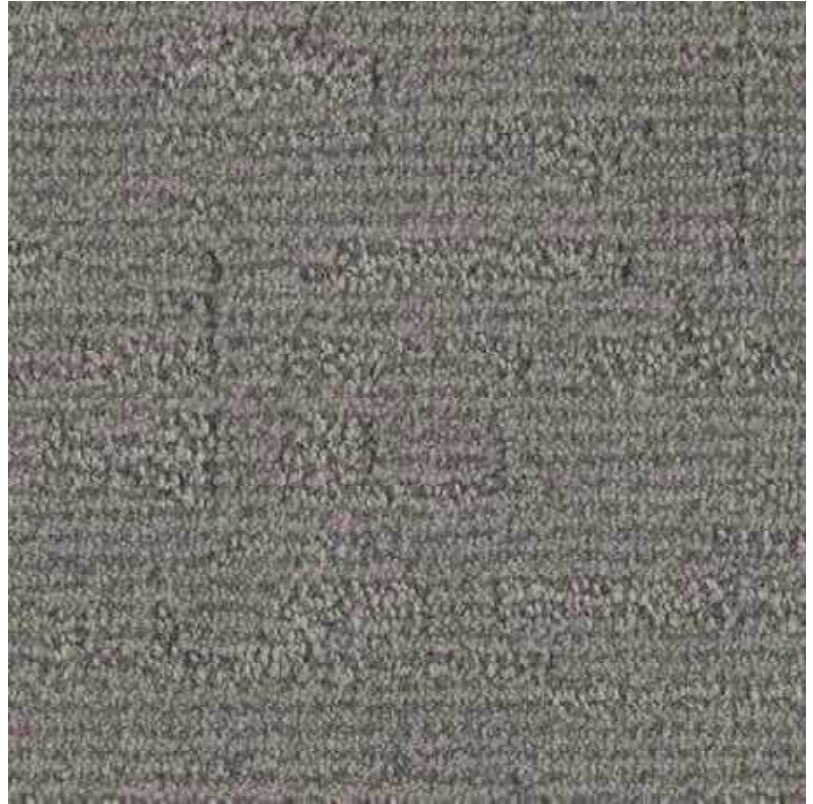
MANUFACTURER: J+J

PRODUCT NAME: OVERTURE N9133

TILE TYPE: CARPET

COLOR AND COLOR #: SOLO 3328

LOCATION (ROOM #): BEDROOM CARPET





Pattern Reference



Actual Size



Overture (N9133)

Product Quick Specs

Style Name/Number	Overture N9133
Color Name/Number	Solo 3328
Construction	Patterned Cut and Loop
Standard Backing	Standard Back
Dye Method	Solution Dyed
Fiber Type	Solution Dyed PET
Face Weight	28 oz./sy (949 grams/m2)
Pattern Repeat	36.00" (w) x 36.00" (l) approx. (91.44cm x 91.44cm)
Gauge	1/8 (3.15 rows/cm)
Standard Width	12 ft 3.66 m
Standard Adhesive	Commercialon Premium Carpet Adhesive
Smoke Density	Less then 450 flaming
Static Test	Less then 3 kv
Standard Warranties	Standard Back Living Spaces



MATERIAL: Tile
MANUFACTURER: DAL TILE
PRODUCT NAME: FABRIC ART
COLORBODY PORCELAIN MODERN LINEAR
TILE TYPE: PORCELAIN
COLOR AND COLOR #: ML61 BEIGE
FINISH: MATTE
LOCATION (ROOM #): FLOOR IN ROOM #117 & #118



PRODUCT SPECIFICATION:

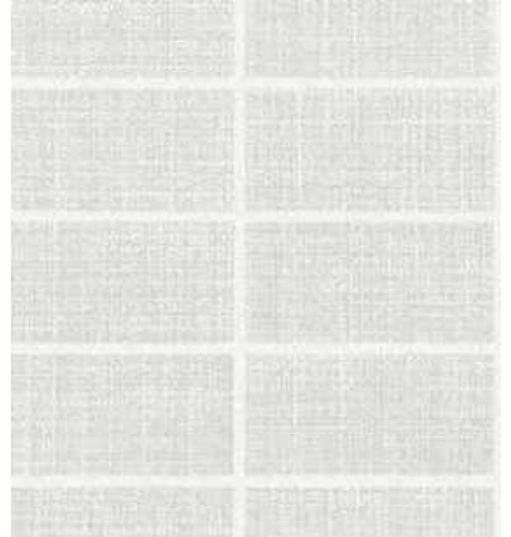
SIZE: 12 X 24
TILE THICKNESS: 5/16"
GROUT JOINT SIZE: 1/8"
SHADE VARIATION: MEDIUM V2
INSTALLATION PATTERN: STRAIGHT LAY
MOISTURE ABSORPTION: ASTM C373
BREAKING STRENGTH: ASTM C648
CHEMICAL RESISTANCE: MOHS
ABRASION RESISTANCE: C650

GROUT: TEC 909 STERLING

MANUFACTURER: FORMICA
PRODUCT NAME: BASALT SLATE 3690-58
FINISH: MATTE
EDGE PROFILE: EASED
LOCATION (ROOM #): KITCHEN COUNTERTOPS /
BATHROOM COUNTERTOPS



MATERIAL: Tile
MANUFACTURER: DAL TILE
PRODUCT NAME: FABRIC ART
COLOR BODY PORCELAIN MODERN TEXTILE BEIGE
TILE TYPE: PORCELAIN
COLOR AND COLOR #: BEIGE MT51
FINISH: MATTE
LOCATION (ROOM #): KITCHEN UNITS BACKSPLASH



PRODUCT SPECIFICATION:

SIZE: 1" X 3"
TILE THICKNESS: 5/16"
GROUT JOINT SIZE: 1/8"
SHADE VARIATION: MEDIUM V2
INSTALLATION PATTERN: HORIZONTAL STRAIGHT LAY
MOISTURE ABSORPTION: ASTM C373
BREAKING STRENGTH: ASTM C648
CHEMICAL RESISTANCE: MOHS
ABRASION RESISTANCE: C650

GROUT: TEC 909 STERLING

MATERIAL: BATHROOM VANITY LIGHT



PRODUCT INFORMATION:

MANUFACTURER: MAXIM

STYLE AND STYLE #: 52004BK

SIZE: 30"

COLOR AND COLOR #: Black MB

TYPE: LED

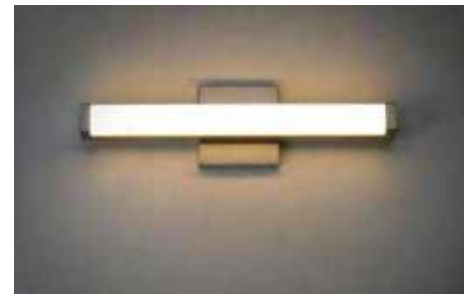
LOCATION (ROOM #): UNITY VANITY LIGHT

SPEC I Bath Vanity

52000 / 52002 / 52004 / 52006 / 52008 / 52032 / 52034

- Squared acrylic lens
- 3000K Color Temperature
- CRI 90+
- Dimmable with ELV dimmers at 120V
- Damp Location
- 120-277V input
- Energy Star
- Title 24

Job Name : _____
 Job Type : _____
 Quantity : _____
 Comments : _____



PRODUCT DESCRIPTION

This minimalistic contemporary approach to LED vanity lighting will be the standard for both residential and commercial applications. The light engine features a high quality dimmable driver with multi volt input and high color rendering LEDs for the ultimate vanity lighting.

- Always consult a qualified electrician before installing any lighting product
- Installation Requirements:
 Ceiling fan attaches to electrical junction box securely anchored and capable of with standing at least 35 lbs

FINISHES OPTIONS:

-  Black (BK)
-  Bronze (BZ)
-  Gold (GLD)
-  Polish Chrome (PC)
-  Satin Nickel (SN)

MATERIAL:

Aluminum, Acrylic

AVAILABLE SIZES:

18" | 24" | 30" | 36" | 48"

RATINGS:

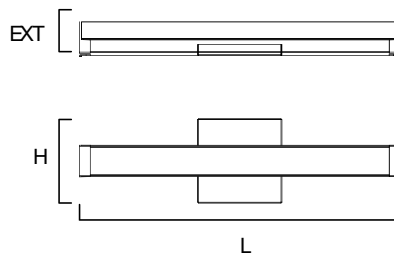
cETLus
 Damp Location
 Energy Star
 Title 24
 JA8 Listed
 ADA



ADDITIONAL:

INSTALL UP/DOWN: All
 RATED LIFE 50000 Hours OPERATING
 TEMPERATURE:
 -20°C (-4°F), 40°C (104°F)

PHOTOMETRIC: Report Found Online



MODEL	DIMENSION	BULB TYPE	CRI	LUMENS INIT DEL	COL TEMP.	DIMMABLE	INPUT
52000	18"W x 1.75"H x 2.25"Ext.	12W LED (Integrated)	90	1140 880	3000K	ELV at 120V	120V-277
52002	24"W x 1.75"H x 2.25"Ext.	16W LED (Integrated)	90	1520 1250	3000K	ELV at 120V	120V-277
52004	30"W x 1.75"H x 2.25"Ext.	20W LED (Integrated)	90	1900 1550	3000K	ELV at 120V	120V-277
52006	36"W x 1.75"H x 2.25"Ext.	24W LED (Integrated)	90	2280 1850	3000K	ELV at 120V	120V-277
52008	48"W x 1.75"H x 2.25"Ext.	32W LED (Integrated)	90	2480 2240	3000K	ELV at 120V	120V-277
52032	24"W x 1.75"H x 2.75"Ext.	16W LED (Integrated)	90	1440 1250	27/35/40K	27-35-40	120V-277
52034	30"W x 1.75"H x 2.75"Ext.	20W LED (Integrated)	90	1800 1550	27/35/40K	27-35-40	120V-277



WESTERN DISTRIBUTION CENTER (HEADQUARTER)
 253 NORTH VINELAND AVE | CITY OF INDUSTRY, CA 91746

EASTERN DISTRIBUTION CENTER
 101 GARDNER PARK | PEACHTREE CITY, GA 30269

P. 626.956.4200 | F. 626.956.4225 | maximlighting.com