



Jones Gillam Renz Architects

Address

730 N 9th St.
Salina, KS 67401

1881 Main St., Suite 301
Kansas City, MO 64108

Contact

jgr@jgrarchitects.com
(785) 827-0386

Web

jgrarchitects.com

ARCHITECT'S SUPPLEMENTAL INSTRUCTIONS

JONES GILLAM RENZ DOCUMENT JGR 710

PROJECT:	Roosevelt Lofts Historic Rehabilitation San Angelo, TX	Report No.	Six (6)
OWNER:	Overland Property Group 234 N. Santa Fe Ave, Suite A Salina, KS 67401	Date	June 26, 2024
CONTRACTOR:	MCP Group 3501 SW Fairlawn Rd. Topeka, KS 66614	Architect's Proj No.	22-3281
		Contract For:	General Construction Mechanical, Electrical

The work shall be carried out in accordance with the following supplemental instructions issued in accordance with the Contract Documents without change in Contract Sum or Contract Time. Prior to proceeding in accordance with these instructions, indicate your acceptance of these instructions for minor change to the Work as consistent with the Contract Documents and return a copy to the Architect.

DESCRIPTION:

Contractor to make adjustments as needed and required per the modifications as indicated on revised attached drawings and in the below descriptions.

1. Several items were noted, during a review of the plumbing fixture schedule, that were not in compliance with the Fair Housing and Accessibility Guidelines, thus changes have been made to address these.
 - a. Sheet M6.1 – Plumbing Fixture Schedule:
 - i. Kitchen Sink KS-B has been modified to be an accessible fixture.
 - ii. Kitchen Sink KS-C was added for the laundry room.
 - iii. Showers SH-A and SH-B were both modified to meet FHA/ANSI A117.1 requirements
 - b. Plumbing Plans on Sheets M1.5 – 1.10 were updated to show 'KS-B' located at the accessible units: #109 & #2-3, and 'KS-C' in the Laundry Room. Tags were updated in apartment 303 to the adaptable fixture tags (KS-A and SH-A).

Attachments:

1. Revised MEP Sheets M1.5, M1.6, M1.7, M1.8, M1.9, M1.10, and M6.1

Issued by:

Jones Gillam Renz Architects PO Box 2928, Salina, KS 67402
Maggie Gillam, Project Manager 785-827-0386 mgillam@jgrarchitects.com

Copies to:

MCP Group - Eric Hubener, Will Allen
OPG - Dan Maximuk, April Engstrom
JGR Architect/Project Manager - Maggie Gillam
LST - Brian Ochs
Structural - Brent Engelland

NOTES:
 • SEE ROUGH-IN REQUIREMENTS IN PLUMBING SCHEDULE ON SHEET M6.1 FOR ADDITIONAL INFORMATION.
 • PIPING SHALL NOT BE ROUTED VERTICALLY IN FIREWALLS SEPARATING UNITS. ALL PIPING SHALL BE ROUTED VERTICALLY IN FURRED OUT WALL AS INDICATED ON PLANS.
 • WHERE PIPING PENETRATES FIRE RATED ASSEMBLIES, INSTALL PER ARCH. DETAILS.

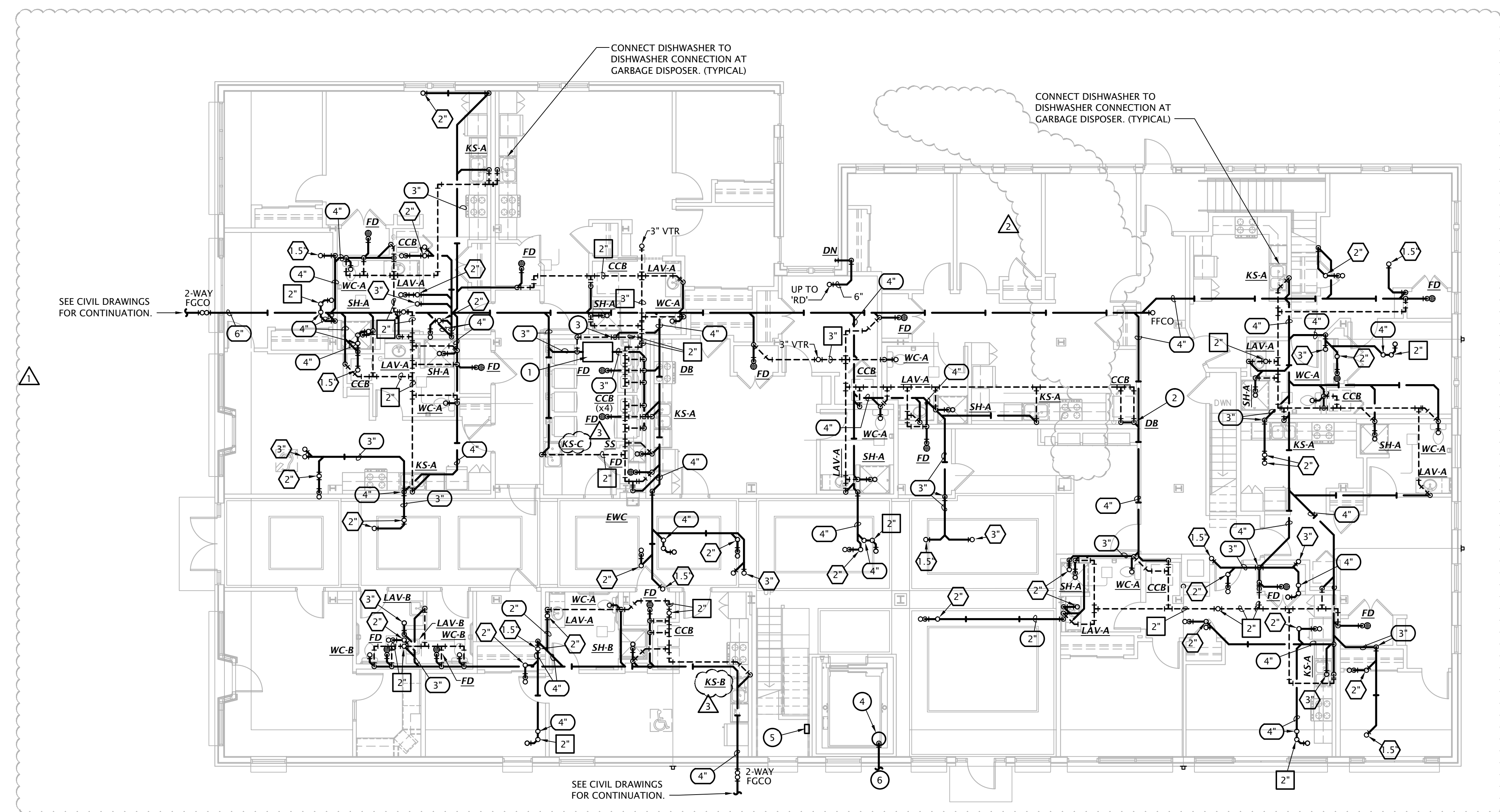
PLUMBING SIZING SYMBOLS

○ ^x	DRAIN (x = SIZE)
□ ^x	VENT (x = SIZE)
◇ ^x	WASTE STACK VENT (x = SIZE)

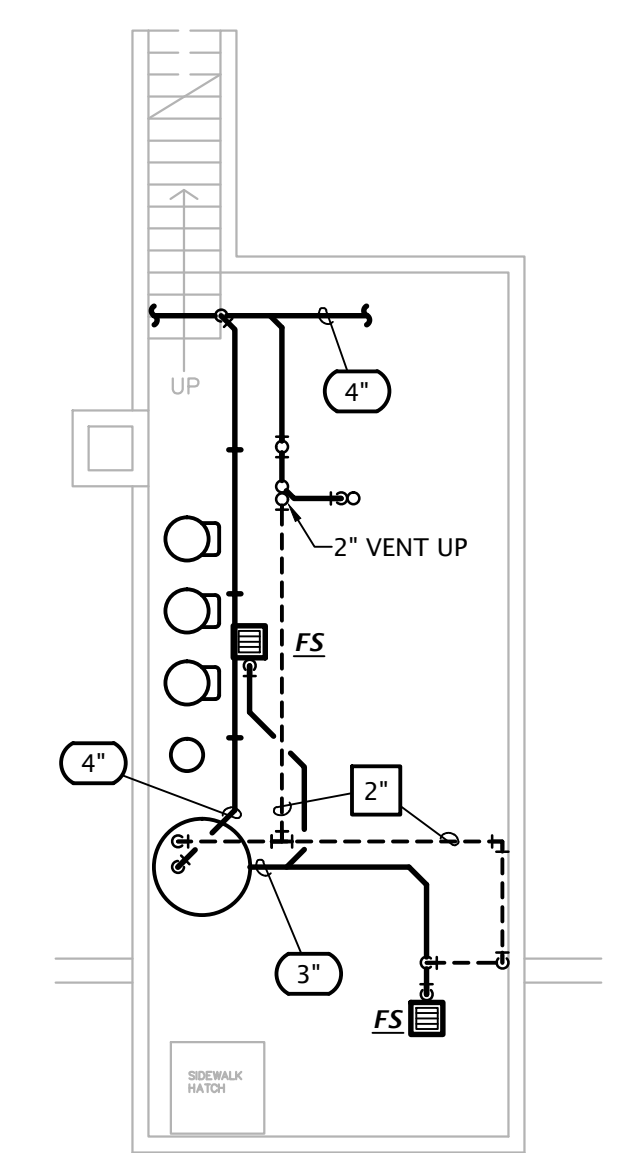
WASTE STACK VENT NOTE:
 ALL OFFSETS ARE PROHIBITED BETWEEN LOWEST AND HIGHEST FIXTURE DRAIN CONNECTION TO WASTE STACK VENT (IPC 913.2)

WASTE AND VENT NOTES BY SYMBOL

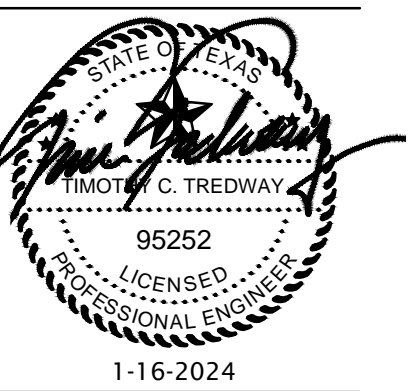
- PROVIDE LINT INTERCEPTOR FOR WASHING MACHINES EQUAL TO SMITH MFG. CO. 8910-50, RATED FOR 50 GPM FLOW RATE, PRIMARY AND SECONDARY LINT SCREENS, SECURED AND GASKETED STEEL COVER, 3" INLET AND OUTLET. PROVIDE WITH EXTENSIONS AS REQUIRED.
- PROVIDE DRAIN BOX IN LAUNDRY CLOSET FOR INDIRECT CONNECTION OF CONDENSATE DRAIN FROM INDOOR UNIT LOCATED IN HALLWAY. COORDINATE EXACT LOCATION AND REQUIREMENTS WITH M.C.
- PROVIDE DRAIN BOX IN WALL OF LAUNDRY ROOM FOR INDIRECT CONNECTION OF CONDENSATE DRAIN FROM INDOOR UNIT LOCATED IN HALLWAY. COORDINATE EXACT LOCATION AND REQUIREMENTS WITH M.C.
- ELEVATOR SUMP PUMP. SEE DETAIL 3:M6.3.
- ELEVATOR SUMP PUMP CONTROL PANEL. COORDINATE WITH E.C.
- EXTEND ELEVATOR SUMP PUMP DISCHARGE TO DAYLIGHT. COORDINATE WITH CIVIL ENGINEER.



1 FIRST FLOOR WASTE AND VENT PLAN
 1/8" = 1'-0"



1 BASEMENT WASTE AND VENT PLAN
 1/8" = 1'-0"


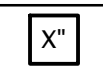



1-16-2024
 REVISION:
 ▲ Addendum #2 02-20-2024
 ▲ ASI #3 05-08-2024
 ▲ ASI #6 06-24-2024
 DATE: 1-16-2024
 JOB: 21-3166
 SHEET NO.:

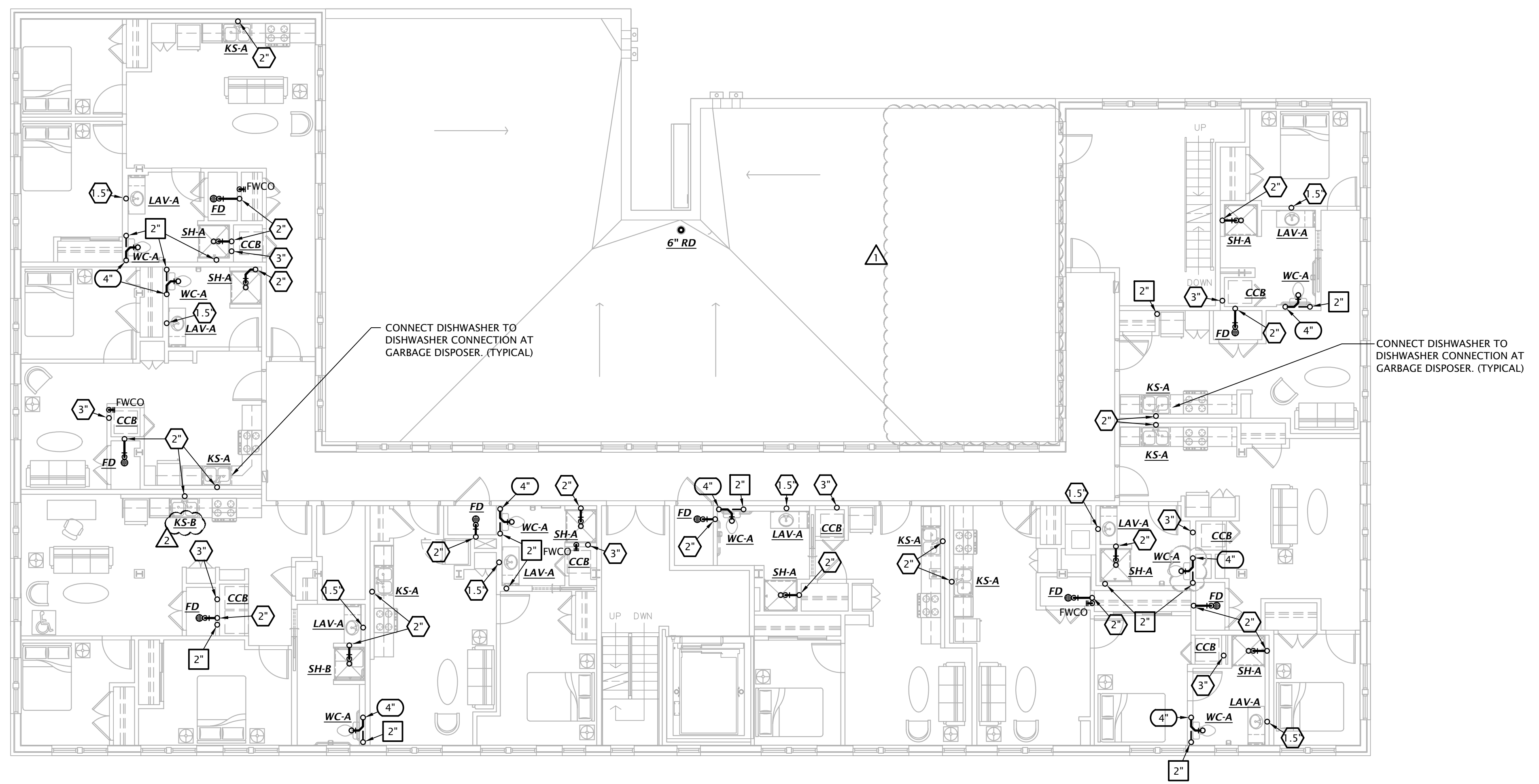
NOTES:

- SEE ROUGH-IN REQUIREMENTS IN PLUMBING SCHEDULE ON SHEET M6.1 FOR ADDITIONAL INFORMATION.
- PIPING SHALL NOT BE ROUTED VERTICALLY IN FIREWALLS SEPARATING UNITS. ALL PIPING SHALL BE ROUTED VERTICALLY IN FURRED OUT WALL AS INDICATED ON PLANS.
- WHERE PIPING PENETRATES FIRE RATED ASSEMBLIES, INSTALL PER ARCH. DETAILS.

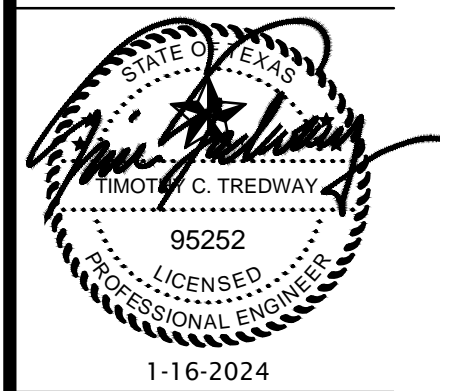
PLUMBING SIZING SYMBOLS

	DRAIN (X = SIZE)
	VENT (X = SIZE)
	WASTE STACK VENT (X = SIZE)

WASTE STACK VENT NOTE:
 ALL OFFSETS ARE PROHIBITED BETWEEN LOWEST AND HIGHEST FIXTURE DRAIN CONNECTION TO WASTE STACK VENT (IPC 913.2)





1 SECOND FLOOR WASTE AND VENT PLAN
 1/8" = 1'-0"



1-16-2024

REVISION:

	ASI #3 05-08-2024
	ASI #6 06-24-2024

DATE: 1-16-2024
 JOB: 21-3166
 SHEET NO.:

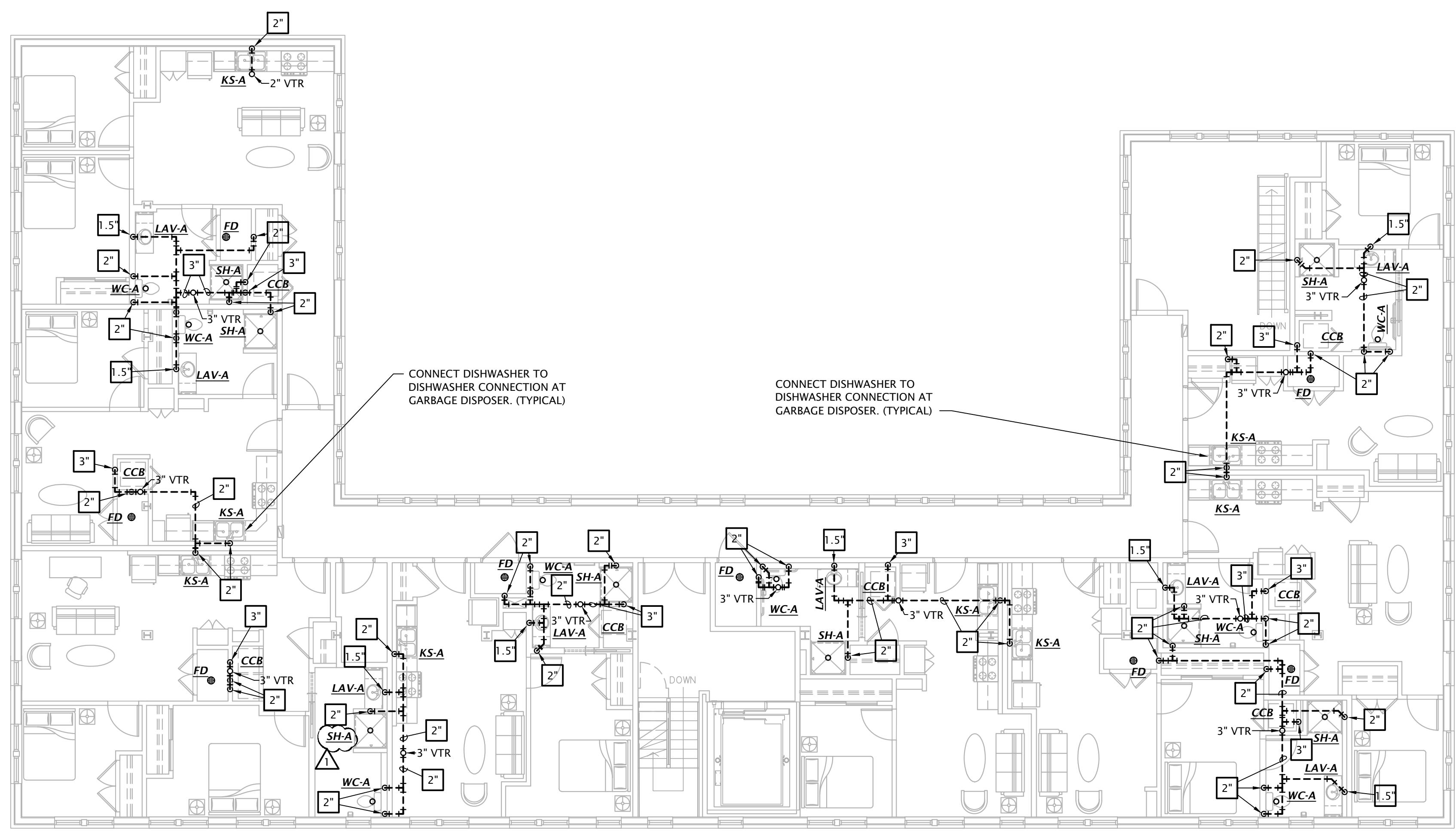
M1.6

- NOTES:**
- SEE ROUGH-IN REQUIREMENTS IN PLUMBING SCHEDULE ON SHEET M6.1 FOR ADDITIONAL INFORMATION.
 - PIPING SHALL NOT BE ROUTED VERTICALLY IN FIREWALLS SEPARATING UNITS. ALL PIPING SHALL BE ROUTED VERTICALLY IN FURRED OUT WALL AS INDICATED ON PLANS.
 - WHERE PIPING PENETRATES FIRE RATED ASSEMBLIES, INSTALL PER ARCH. DETAILS.

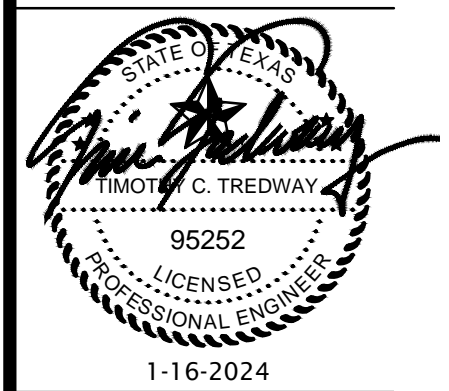
PLUMBING SIZING SYMBOLS

○ ^{x"}	DRAIN (x = SIZE)
□ ^{x"}	VENT (x = SIZE)
⬠ ^{x"}	WASTE STACK VENT (x = SIZE)

WASTE STACK VENT NOTE:
 ALL OFFSETS ARE PROHIBITED BETWEEN LOWEST AND HIGHEST FIXTURE DRAIN CONNECTION TO WASTE STACK VENT (IPC 913.2)



1 THIRD FLOOR WASTE AND VENT PLAN
 1/8" = 1'-0"



REVISION:

AS1 #6 06-24-2024

DATE: 1-16-2024
 JOB: 21-3166
 SHEET NO.:

M1.7

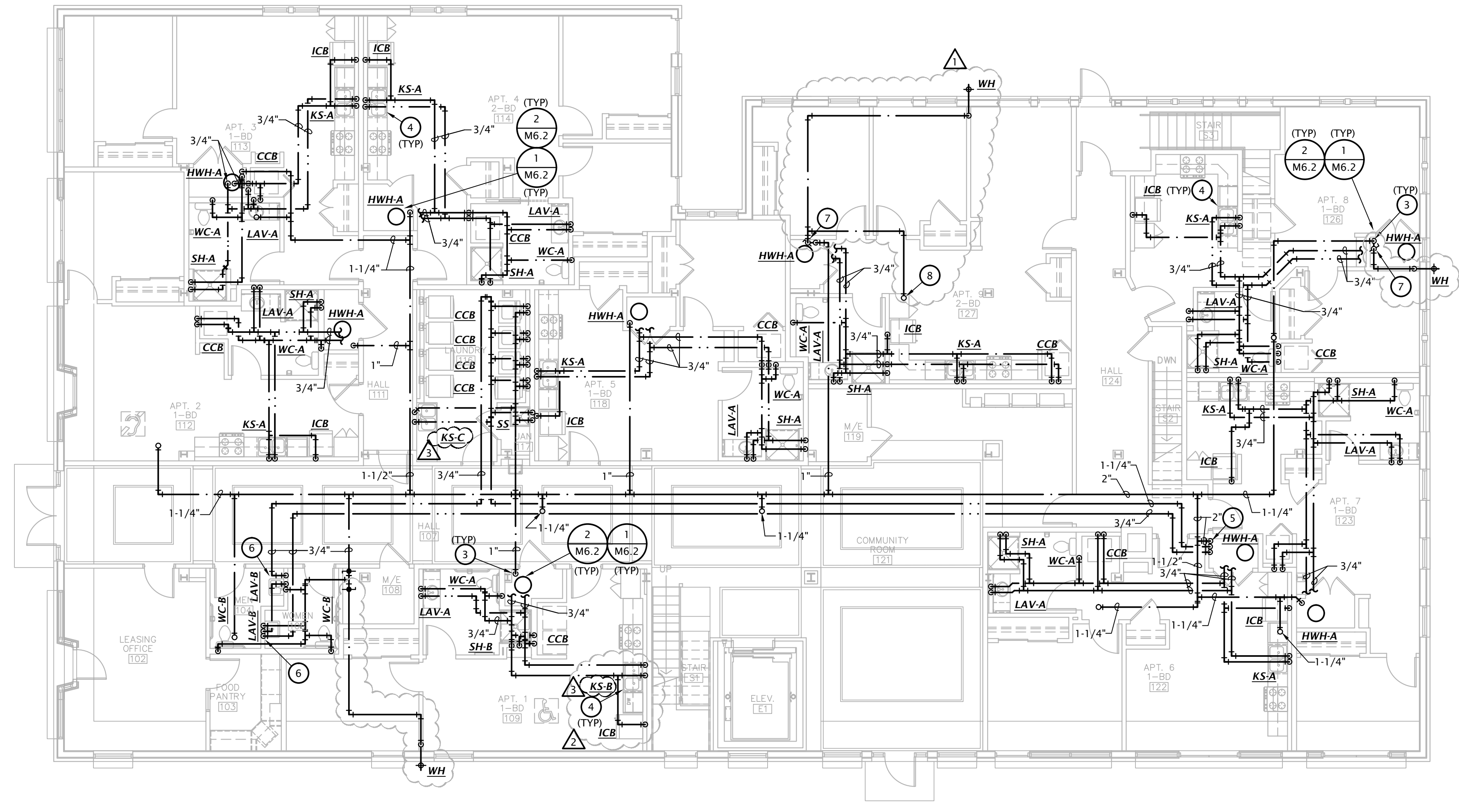
COPPER PIPE SIZE INDICATED	ALTERNATE MATERIAL/SIZE	
	Cross-linked polyethylene (PEX)	Polypropylene (PP)
1/2"	3/4"	1/2"
3/4"	1"	1"
1"		1-1/4"
1-1/4"		1-1/2"
1-1/2"		2"
2"		2-1/2"
2-1/2"		3"
3"		3-1/2"

Note: Pipe sizes indicated on drawings are for Type L copper pipe. If alternate materials are used, sizes shall be as indicated above. Where no pipe size is shown, use of indicated material in design pipe size is prohibited. Do not use materials other than those listed.

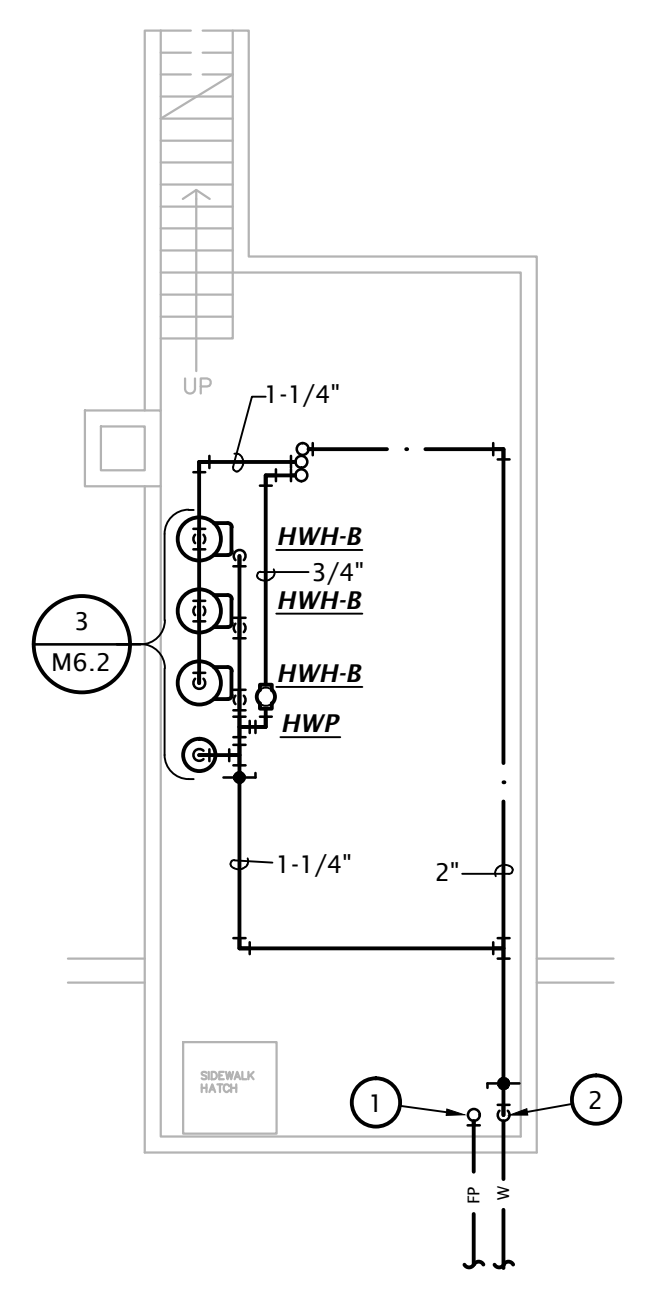
- NOTES:**
- PIPING SHALL NOT BE INSTALLED ABOVE ELECTRICAL PANELS.
 - COORDINATE INSTALLATION OF PIPING IN MECHANICAL CLOSET W/ M.C. & E.C.
 - SEE PLUMBING FIXTURE SCHEDULE ON SHEET P6.1 FOR FIXTURE ROUGH-IN INFORMATION.
 - INSULATE ALL HW PIPING PER SPECIFICATIONS.

DOMESTIC WATER PLAN NOTES BY SYMBOL

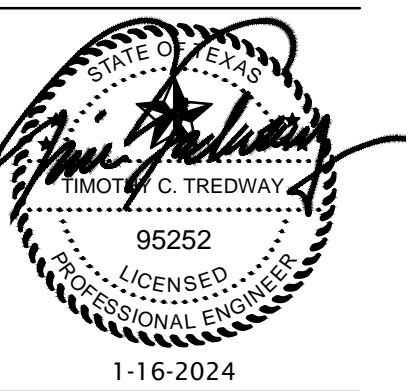
1. FIRE PROTECTION SERVICE ENTRANCE. INSTALL IN ACCORDANCE WITH NFPA 13. COORDINATE LOCATION OF ALL VALVES AND APPURTENANCES WITH AFJ.
2. PROVIDE SHUT-OFF VALVE AT WATER SERVICE ENTRANCE WITH PRESSURE REDUCING VALVE SET TO 80 PSI IF REQUIRED. COORDINATE REQUIREMENTS WITH CITY OF SAN ANGELO.
3. PROVIDE 1" WATER SERVICE TO APARTMENT WITH SHUT-OFF VALVE. SEE TYPICAL APARTMENT RISER DIAGRAM ON SHEET M6.2 FOR ADDITIONAL INFO.
4. PROVIDE 1/2" VALVED BRANCH BELOW SINK AND CONNECT DISHWASHER. ROUTE PIPING ALONG BACK OF CABINETRY, COORDINATE EXACT ROUTING WITH G.C. COORDINATE EXACT REQUIREMENTS WITH DISHWASHER PROVIDED.
5. ROUTE 2" CW, 1-1/4" HW, AND 3/4" HW RECIRC. DOWN TO BASEMENT.
6. HOT WATER RECIRC LOOP SHALL DROP IN WALL TO LIMIT HOT WATER BRANCH TO PUBLIC LAVATORY TO 2 FT MAX.
7. CONNECT TO DOMESTIC COLD WATER BRANCH UPSTREAM OF APARTMENT SHUT-OFF AND TENANT METER AND PROVIDE VALVED BRANCH TO WALL HYDRANT.
8. ROUTE 3/4" BRANCH UP TO ROOF HYDRANT. PROVIDE 1/8" DRAIN DRAIN FROM ROOF HYDRANT TO ABOVE NEAREST FLOOR DRAIN IN MECH CLOSET.



1 FIRST FLOOR DOMESTIC WATER PLAN
 1/8" = 1'-0"

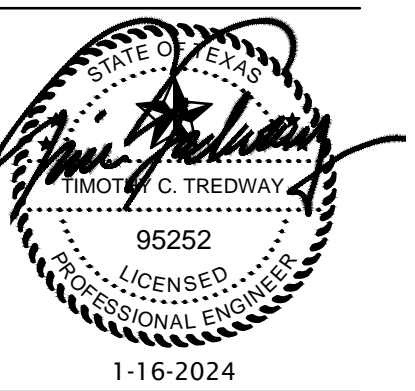


2 BASEMENT DOMESTIC WATER PLAN
 1/8" = 1'-0"



REVISION:

▲ Addendum #2 02-20-2024
▲ ASI #5 06-05-2024
▲ ASI #6 06-24-2024
DATE: 1-16-2024
JOB: 21-3166
SHEET NO.:



REVISION:	1-16-2024
▲ Addendum #2	02-20-2024
▲ ASI #3	05-08-2024
▲ ASI #5	06-05-2024
DATE:	1-16-2024
JOB:	21-3166
SHEET NO.:	

M1.9

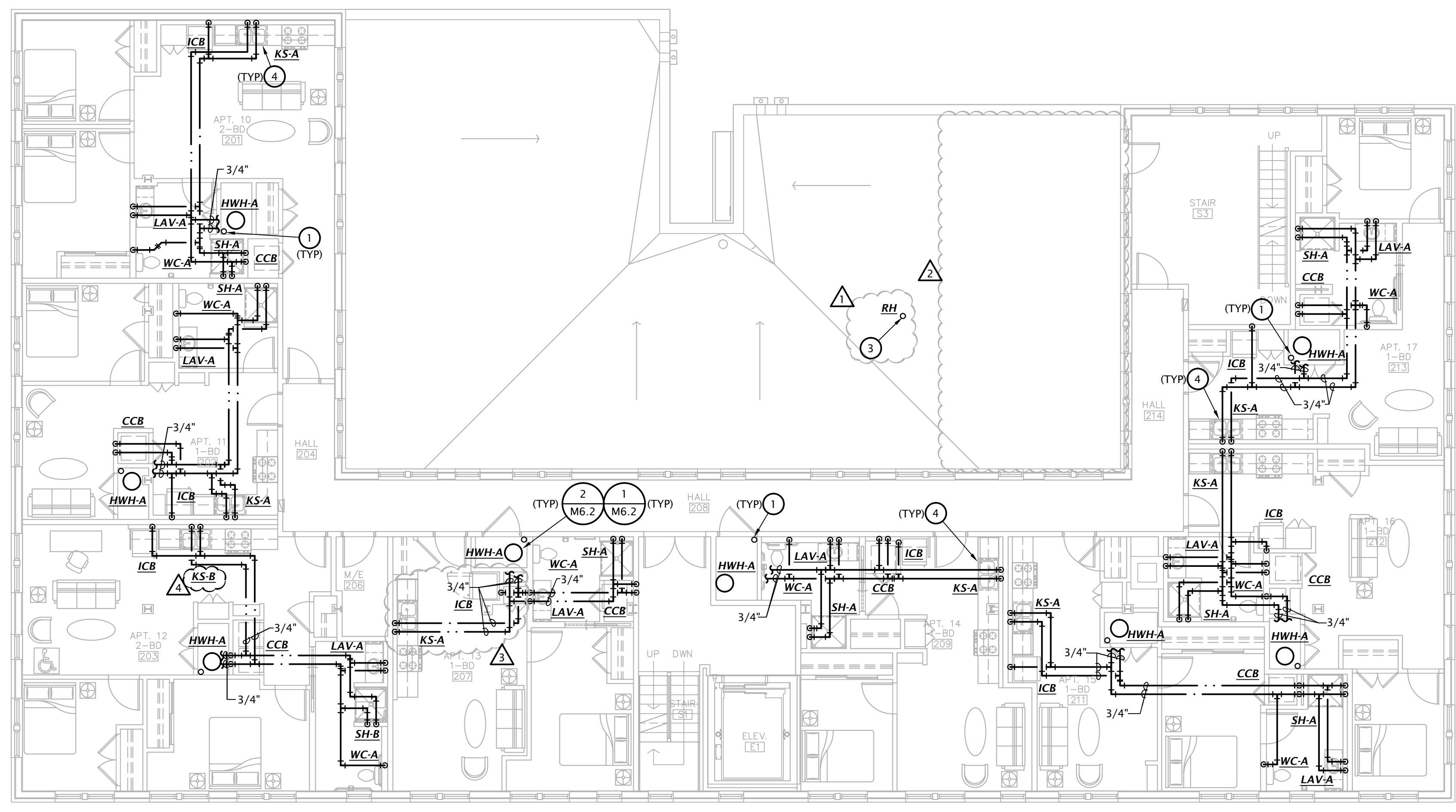
COPYRIGHTED ©

COPPER PIPE SIZE INDICATED	ALTERNATE MATERIAL/SIZE	
	Cross-linked polyethylene (PEX)	Polypropylene (PP)
	1/2"	3/4"
3/4"	1"	1"
1"		1-1/4"
1-1/4"		1-1/2"
1-1/2"		2"
2"		2-1/2"
2-1/2"		3"
3"		3-1/2"

Note: Pipe sizes indicated on drawings are for Type L copper pipe. If alternate materials are used, sizes shall be as indicated above. Where no pipe size is shown, use of indicated material in design pipe size is prohibited. Do not use materials other than those listed.

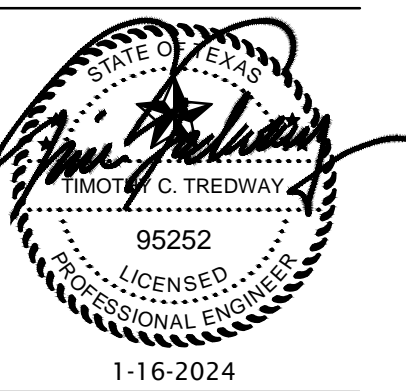
- NOTES:**
- PIPING SHALL NOT BE INSTALLED ABOVE ELECTRICAL PANELS.
 - COORDINATE INSTALLATION OF PIPING IN MECHANICAL CLOSET W/ M.C. & E.C.
 - SEE PLUMBING FIXTURE SCHEDULE ON SHEET P6.1 FOR FIXTURE ROUGH-IN INFORMATION.
 - INSULATE ALL HW PIPING PER SPECIFICATIONS.

- DOMESTIC WATER PLAN NOTES BY SYMBOL**
1. PROVIDE 1" WATER SERVICE TO APARTMENT WITH SHUT-OFF VALVE. SEE TYPICAL APARTMENT DOMESTIC WATER RISER DIAGRAM ON SHEET M6.2 FOR ADDITIONAL INFO.
 2. PROVIDE 1/2" VALVED BRANCH BELOW SINK AND CONNECT DISHWASHER. ROUTE PIPING ALONG BACK OF CABINETS. COORDINATE EXACT ROUTING WITH G.C. COORDINATE EXACT REQUIREMENTS WITH DISHWASHER PROVIDED.
 3. FIELD COORDINATE EXACT LOCATION OF ROOF HYDRANT WITH ARCHITECT AND OTHER TRADES PRIOR TO ROUGH-IN. COORDINATE INSTALLATION WITH G.C.



1 SECOND FLOOR DOMESTIC WATER PLAN
 1/8" = 1'-0"

ASI #6 06-24-2024



REVISION:	1-16-2024
▲ Addendum #2 02-20-2024	
▲ ASI #6 06-24-2024	
DATE:	1-16-2024
JOB:	21-3166
SHEET NO.:	

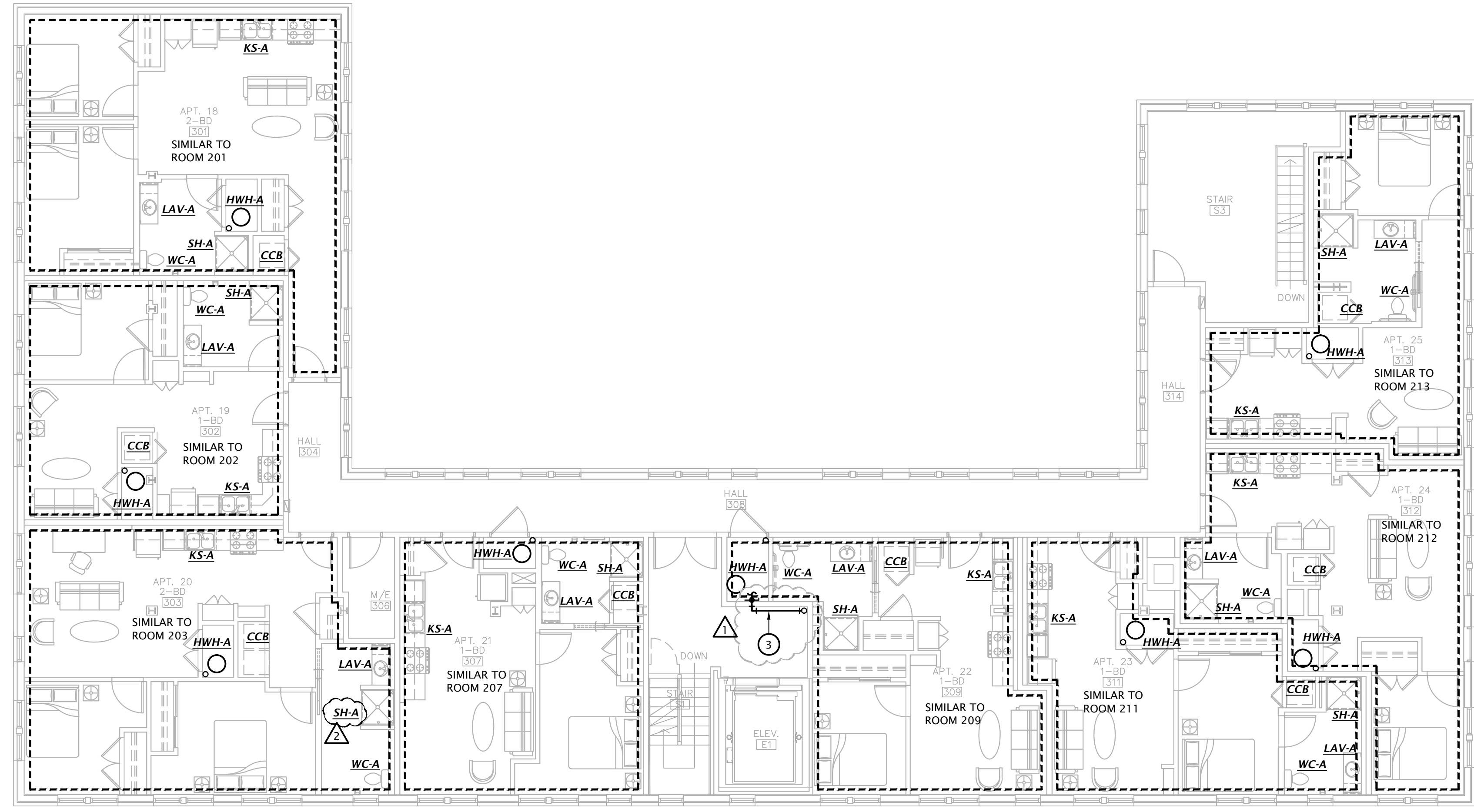
COPPER PIPE SIZE INDICATED	ALTERNATE MATERIAL/SIZE	
	Cross-linked polyethylene (PEX)	Polypropylene (PP)
1/2"	3/4"	1/2"
3/4"	1"	1"
1"		1-1/4"
1-1/4"		1-1/2"
1-1/2"		2"
2"		2-1/2"
2-1/2"		3"
3"		3-1/2"

Note: Pipe sizes indicated on drawings are for Type L copper pipe. If alternate materials are used, sizes shall be as indicated above. Where no pipe size is shown, use of indicated material in design pipe size is prohibited. Do not use materials other than those listed.

- NOTES:**
- PIPING SHALL NOT BE INSTALLED ABOVE ELECTRICAL PANELS.
 - COORDINATE INSTALLATION OF PIPING IN MECHANICAL CLOSET W/ M.C. & E.C.
 - SEE PLUMBING FIXTURE SCHEDULE ON SHEET P6.1 FOR FIXTURE ROUGH-IN INFORMATION.
 - INSULATE ALL HW PIPING PER SPECIFICATIONS.

DOMESTIC WATER PLAN NOTES BY SYMBOL

1. PROVIDE 1" WATER SERVICE TO APARTMENT WITH SHUT-OFF VALVE. SEE TYPICAL APARTMENT DOMESTIC WATER RISER DIAGRAM ON SHEET M6.2 FOR ADDITIONAL INFO.
2. PROVIDE 1/2" VALVED BRANCH BELOW SINK AND CONNECT DISHWASHER. ROUTE PIPING ALONG BACK OF CABINERY. COORDINATE EXACT ROUTING WITH G.C. COORDINATE EXACT REQUIREMENTS WITH DISHWASHER PROVIDED.
3. CONNECT TO DOMESTIC COLD WATER BRANCH UPSTREAM OF APARTMENT SHUT-OFF AND TENANT METER AND PROVIDE VALVED BRANCH UP TO PENTHOUSE AND PROVIDE WALL HYDRANT **WH** ON ROOF. LOCATE WALL HYDRANT 18" ABOVE ROOF IN PENTHOUSE WALL.



1 THIRD FLOOR DOMESTIC WATER PLAN
 1/8" = 1'-0"

MITSUBISHI ELECTRIC TRANE HVAC US: CITY MULTI VRF INDOOR UNIT SCHEDULE

Room Name	Tag Reference	Model	Type	Nominal Cooling Capacity (BTU/h)	Nominal Heating Capacity (BTU/h)	Cooling Design Entering Temp DB/WB (°F) / [Water in temp]	Heating Design Entering Temp DB/WB (°F) / [Water in temp]	Corrected Capacity			Estimated Cooling Coil LAT (°F) / [LWT]	Estimated Heating Coil LAT (°F) / [LWT]	Voltage / Phase	Electrical MCA/MFS
								Cooling Total Capacity (BTU/h)	Cooling Sensible Capacity (BTU/h)	Heating Capacity (BTU/h)				
3rd Floor Stair	IU-1-1	NTXWST09B112AA	Wall -Mounted	8,000	8,300	80.0/67.0	70	7,158.3	7,146.3	7,280.3	61.4	88.6	208/230V/1-phase	Powered by Outdoor
2nd Floor Stair	IU-1-2	NTXWST09B112AA	Wall -Mounted	8,000	8,300	80.0/67.0	70	7,111.8	7,111.8	7,266.9	61.5	88.6	208/230V/1-phase	Powered by Outdoor
1st Floor Hall	IU-1-3	MSZ-EF09NAW-U2	Wall -Mounted	8,000	8,300	80.0/67.0	70	7,041.9	7,041.9	7,246.8	63.0	87.2	208/230V/1-phase	Powered by Outdoor
3rd Elevator Lobby	IU-2	NTXWMT09A112AA	Wall -Mounted	9,000	10,900	80.0/67.0	70	8,130.9	7,071.4	6,931.7	62.3	87.0	208/230V/1-phase	Powered by Outdoor
Laundry	IU-3	NTXWMT12A112AA	Wall -Mounted	12,000	12,200	80.0/67.0	70	10,841.2	8,814.5	8,472.1	57.9	90.8	208/230V/1-phase	Powered by Outdoor

MITSUBISHI ELECTRIC TRANE HVAC US: OUTDOOR UNIT SCHEDULE

Tag Reference	Model Number	Nominal Cooling Capacity (BTU/h)	Nominal Heating Capacity (BTU/h)	Cooling Efficiency IEER/EER [SEER]	Heating COP @ 47°F [HSPF]	Design Cooling Outdoor Temp DB (°F)	Design Heating Outdoor Temp WB (°F)	Corrected Cooling Total Capacity (BTU/h)	Corrected Heating Capacity (BTU/h)	Electrical-Per Module			
										208/230V or [460V]		MCA	RFS
										Voltage / Phase			
OU-1	NTXMPH24A132CA	22,000	25,000	11.75 [17.25]	[9.5]	101.0	16.5	21,312.0	21,794.1	208/230V / 1-phase	31.5	40	40
OU-2	NTXSMT09A112AB	9,000	10,900	12 [18]	3.549564 [10]	101.0	16.5	8,130.9	6,931.7	208/230V / 1-phase	9	15	15
OU-3	NTXSMT12A112AB	12,000	12,200	9.9 [18]	3.611733 [10]	101.0	16.5	10,841.2	8,472.1	208/230V / 1-phase	9	15	15

PLUMBING FIXTURE SCHEDULE

MARK	MANUFACTURER	DESCRIPTION	TRIM		ROUGH-IN SIZES				NOTES
			MANUFACTURER	DESCRIPTION	WASTE	VENT	CW	HW	
WC-A	KOHLER	Model 3999-0 "Highline" ADA compliant flush tank water closet, white vitreous china, two piece, 12" rough-in, elongated 16-1/2" high bowl, siphon jet flushing action, 1.28 GPF, polished chrome actuator located on open side of room.	KOHLER	#K-4636-0 white, closed front plastic seat with slow closing lid.	4"	2"	1/2"	---	1
WC-B	KOHLER	Model 3999-0 "Highline" ADA compliant flush tank water closet, white vitreous china, two piece, 12" rough-in, elongated 16-1/2" high bowl, siphon jet flushing action, 1.28 GPF, polished chrome actuator located on open side of room.	KOHLER	#4650-0 Lustra white, open front, plastic seat with cover	4"	2"	1/2"	---	1
LAV-A	AMERICAN STANDARD	Model 0610.000 under counter mounted lavatory, white vitreous china, 20-1/4"W x 16"	KOHLER	Model 15182-4RA single handle faucet. Provide pop-up drain.	2"	1-1/2"	1/2"	1/2"	1,2,4
LAV-B	KOHLER	Model K-2035-1 wall hung, white vitreous china, 22"W x 18", single hole faucet.	DELTA	Model 597LF-PNMPU single handle faucet, with polished nickel finish. Provide with pop-up drain.	2"	1-1/2"	1/2"	1/2"	1,2,3
KS-A	JUST	Model DL-2233-A-GR two compartment 18 GA stainless steel sink, self rimming, 14"x16"x8"D inside, fully undercoated, faucet holes as req.	DELTA	Model 400-HDF single handle kitchen sink faucet with hose spray attachment. Chrome finish. Provide basket strainer.	2"	1-1/2"	1/2"	1/2"	2,4
KS-B	JUST	Model DL-ADA-2233-A-GR two compartment 18 GA stainless steel sink, self rimming, 14"x16"x5"D inside, fully undercoated, faucet holes as req., and drain holes center rear.	DELTA	Model 400-HDF single handle kitchen sink faucet with hose spray attachment. Chrome finish. Provide basket strainer.	2"	1-1/2"	1/2"	1/2"	1,2,3,4
KS-C	JUST	Model DL-ADA-2233-A-GR two compartment 18 GA stainless steel sink, self rimming, 14"x16"x5"D inside, fully undercoated, faucet holes as req., and drain holes center rear.	DELTA	Model 400-HDF single handle kitchen sink faucet with hose spray attachment. Chrome finish. Provide basket strainer.	2"	1-1/2"	1/2"	1/2"	1,2,3,4
SH-A	AQUARIUS	Reinforced fiberglass shower, 36"W x36"D inside, with integral soap/toiletry shelves, 1/2" high threshold, provide with blocking for future grab bars and fold up seat per ANSI A117.1 requirements, coordinate with G.C. Right or left hand rough-in as required, center drain, white finish. Provide with collapsible water dam.	KOHLER	#K-304 pressure balancing valve with integral temperature limits and stops, #K-TS10584-4 valve trim, #K-22167-G showerhead. Polished chrome finish	2"	1-1/2"	1/2"	1/2"	1
SH-B	AQUARIUS	Model C 3682 BF - ANSI A117.1 compliant reinforced fiberglass shower, 36"W x36"D inside, integral soap/toiletry shelves, 1/2" high threshold, with fold up seat and grab bars in accordance with ANSI A117.1 requirements. Right or left hand rough-in as required, center drain, white finish. Provide collapsible water dam.	KOHLER	#K-304 pressure balancing valve with integral temperature limits and stops, #K-TS10584-4 valve trim, #K-355 wall supply elbow, #K-9514 60" hose, #K-10549 hand shower, and #K-8524/K-349 slide bar. Polished chrome finish.	2"	1-1/2"	1/2"	1/2"	1
SS	FIAT	Model MSB-2424 one piece molded stone mop basin, 24" square, stainless steel integral drain body with caulk connection, stainless steel wall guards.	DELTA	Model 2819 faucet with hose thread outlet, vacuum breaker, pail hook, wall brace, metal lever handles.	3"	1-1/2"	3/4"	3/4"	4
EWC	ELKAY	Model EZS8WSLK ADA compliant, self-contained water cooler with stainless steel basin, front push bar actuator, bottle filler, lead-free cooling system capable of cooling 8.0 GPH, 120 volts.			2"	1-1/2"	1/2"	---	
WH	WOODFORD	Model 25 frost proof wall hydrant with anti-siphon vacuum breaker, metal handle.			---	---	3/4"	---	
RH	WOODFORD	Model RHY2-MS frost proof roof hydrant with ASSE 1052 double check backflow preventer that is field testable, integral vent that allows drainage with 1/8" drain hole drilled and tapped in body of hydrant. Provide with manufacturers roof mounting system consisting of cast iron hydrant support, under deck flange, well seal, EPDM boot, and shims as required. Coordinate installation with G.C..			---	---	3/4"	---	
CCB	WATER TITE	Model W4700 recessed washing machine box with 2"PVC/ABS drain coupling and knockout test cap. Two, 1/4 turn adaptor ball valves, sweat connection.			2"	2"	1/2"	1/2"	
ICB	WATER TITE	Model W9700 ice maker connection box with 1/4 turn ball valve and 1/2" sweat copper connection.			---	---	1/2"	---	
DB	SOUX CHIEF	Model 696-3 drainage box with 2" drain connection and solid cover. Provide with Proset Trappguard trap protection device.			2"	---	---	---	
FD	SIOUX CHIEF	Series 833 adjustable floor drain with nickel bronze strainer. Provide Proset Trappguard trap protection device.			2"	---	---	---	
FS	WADE	Model 9140 floor sink with 8" deep body, enameled interior, sediment bucket, nickel bronze trim and grate with openings as required.			3"	1-1/2"	---	---	
RD	WADE	Model 3000 cast iron side outlet body roof drain with flange, flashing ring with gravel stop, underdeck clamp and cast iron dome strainer.							
ORD	WADE	Model 3000 cast iron side outlet body overflow roof drain with 2" cast iron dam/ flashing ring, flange, underdeck clamp and cast iron dome strainer.							
DN	WADE	Model 3940 nickel bronze downspout nozzle with threaded outlet and flange to secure nozzle to wall.							
HWH-A	A.O. SMITH	Model ENT-40, 40 gallon electric water heater, (2) non simultaneous 4500 watts, 208 volt / 1-phase heating elements, 21 GPH recovery @ 90°F temp rise. Minimum 0.95 Energy Factor. Supplied with temperature & pressure relief valve and brass drain valve.							5
HWH-B	RHEEM	Model ELD52-TB, 50 gallon electric water heater, (2) 4500 watt, 208 volt / 3-phase heating elements, 41 GPH recovery @ 90°F temp rise. Supplied with temperature & pressure relief valve and brass drain valve.							
HWP	BELL & GOSSETT	Model NBF-33 circulation pump, bronze body, 10 GPM @ 10' head, 120 VAC. Provide clamp-on aquastat for pump control.							

GENERAL:
 - Provide fixtures with all trim necessary for complete installation

NOTES:
 1. Fixture and installation to meet accessibility requirements of the Fair Housing Act.
 2. Provide Dearborn supplies with stops and escutcheon plate, 1-1/4" cast brass p-trap.
 3. Insulate water and waste piping below lavatory. Utilize insulation kit equivalent to LavGuard by Truebro.
 4. Trim shall be provided with polished chrome finish.
 5. Mount water heater on stand equivalent to Oatey water heater stand.

BLOWER COIL SCHEDULE

MARK	MANUF.	MODEL	FAN			HEATING KW	V/Ph	MOTOR FLA	MCA	MOCP	NOTES
			CFM	ESP	SPEED						
BC-1.5	TRANE	TEM4A0B18	600	0.6	HIGH	5.8	208/1	1.2	36	40	
BC-2	TRANE	TEM4A0B31	800	0.6	HIGH	5.8	208/1	4.1	42	45	
BC-2.5a	TRANE	TEM4A0B36	1000	0.6	HIGH	7.2	208/1	2.0	46	50	
BC-2.5b	TRANE	TEM4A0B36	1000	0.6	HIGH	7.2/3.6	208/1	2.0	46/22	50/25	1
BC-3	TRANE	TEM4A0C42	1200	0.6	MED	7.2	208/1	4.1	48	50	
BC-4	TRANE	TEM4A0C49	1380	0.6	HIGH	7.2/7.2	208/1	6.0	51/43	60/45	1

General Notes:
 - Single point connection required, coordinate the exact electrical requirements of equipment provided with E.C., UNO
 - Electric heater shall not operate simultaneously with heat pump. Electric heater shall be used as back-up heat only.

Notes:
 1. Blower coil heat has two circuits, first circuit indicated includes fan motor.

HEAT PUMP SCHEDULE

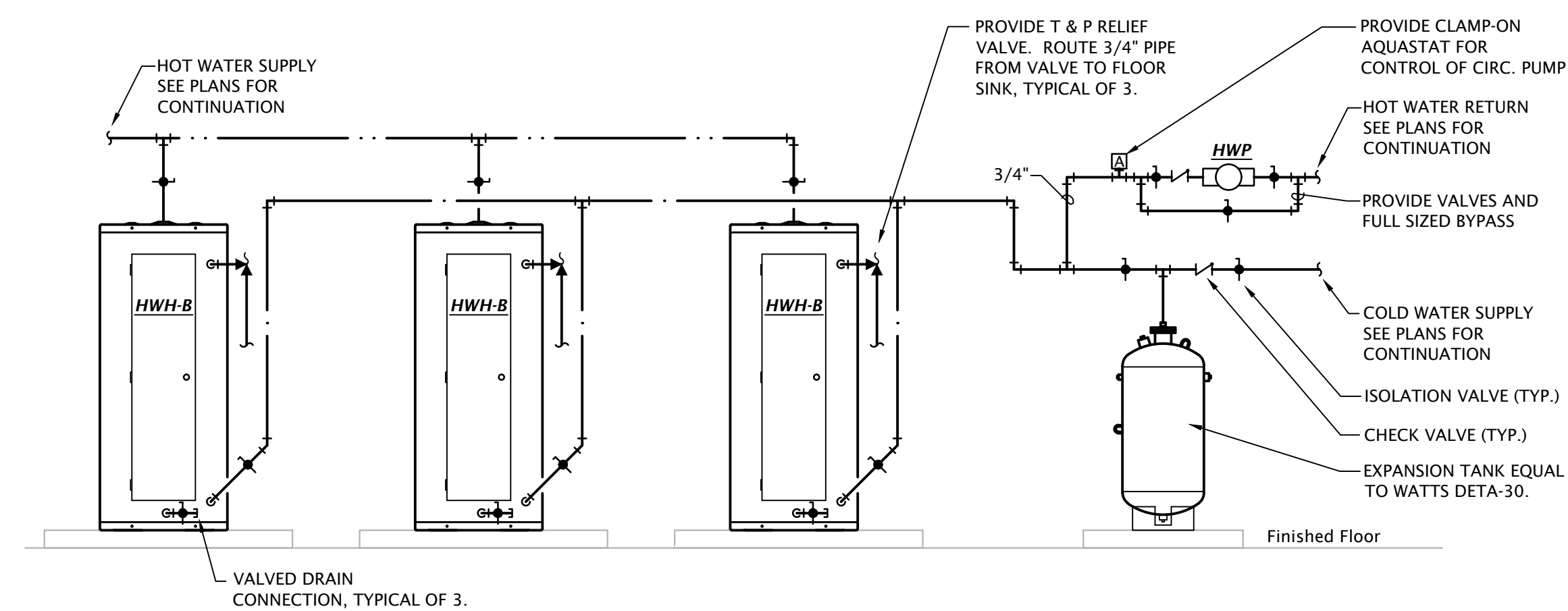
MARK	MANUF.	MODEL	NOMINAL TONS	COOLING CAPACITY				HEATING CAPACITY			ELECTRICAL				
				OA DB	ENT AIR DB/WB	SENS MBH	TOT MBH	MIN SEER2	OA DB	ENT AIR DB	TOT MBH	MIN HSPF2	MCA	MOCP	V/PH
HP-1.5	TRANE	4TWR4018	1.5	105	75/63	10.5	13.1	14.3	47	70	18.9	7.5	12	20	208/1
HP-2	TRANE	4TWR4024	2	105	75/63	16.6	20.7	14.3	47	70	22.5	7.5	13	25	208/1
HP-2.5	TRANE	4TWR4030	2.5	105	75/63	20.0	25.1	14.3	47	70	27.7	7.5	17	25	208/1
HP-3	TRANE	4TWR4036	3	105	75/63	24.5	29.9	14.3	47	70	33.9	7.5	18	30	208/1
HP-4	TRANE	4TWR4048	4	105	75/63	32.1	41.7	14.3	47	70	45.3	7.5	24	40	208/1

Notes:
 1. Refrigerant lines shall be field fabricated. Coordinate line sizing requirements with equipment manufacturer for length of run for each apartment. Provide suction accumulators, etc. as required.
 2. Note not used
 3. Provide 7-day programmable thermostat.
 4. Provide with R140a refrigerant.
 5. Provide 2 sets of MERV-7 filters.

ELECTRIC HEATER SCHEDULE

MARK	MANUF.	MODEL	MOUNTING	WATTS	VOLTAGE/PHASE	DESCRIPTION	NOTES
EWH-1,2,3	TRANE	UHWA	WALL	1,500	120/1	Architectural fan forced wall heater	1,2,3

NOTES:
 1. Provide with high temp. thermal cutout and fan delay.
 2. Provide with integral thermostat and unit mounted disconnect switch.
 3. Provide with manufacturer's surface mounting adapter sleeve. Coordinate exact mounting requirements and locations with Arch. and rated construction.



3 COMMON AREA WATER HEATER PIPING DIAGRAM
 NO SCALE