



Jones Gillam Renz Architects

Address

730 N 9th St.
Salina, KS 67401

1881 Main St., Suite 301
Kansas City, MO 64108

Contact

jgr@jgrarchitects.com
(785) 827-0386

Web

jgrarchitects.com

NOTICE TO ALL CONTRACTORS AND SUB-CONTRACTORS

August 16, 2024

The Reserves at Grand View Heights – Proj 22-3262

ADDENDUM NO. 1

YOU ARE INSTRUCTED TO READ AND TO NOTE THE FOLLOWING DESCRIBED CHANGES, CORRECTIONS, CLARIFICATIONS, OMISSIONS, DELETIONS, ADDITIONS, APPROVALS, AND STATEMENTS PERTINENT TO THE CONTRACT AND CONSTRUCTION DOCUMENTS. THIS ADDENDUM IS A PART OF THE CONTRACT AND CONSTRUCTION DOCUMENTS AND SHALL GOVERN IN THE PERFORMANCE OF THE WORK.

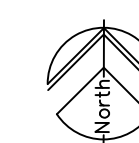
Civil – Drawings

1. Sheets C1.0, C2.0, C3.1, C3.2 and C4.0 – Sheet have been revised and re-issued, dated 08-16-24 (Rev-1). Please replace all previous sheets with those attached.

Receipt of this Addendum shall be noted on the Bid Form.

END OF ADDENDUM NO. 1

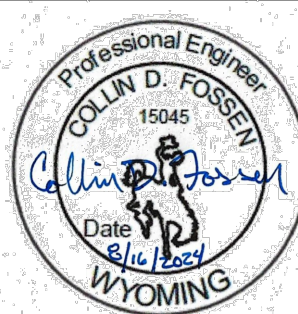
Civil Sheets C1.0, C2.0, C3.1, C3.2 and C4.0



A

SITE PLAN
1" = 20'-0"

THE RESERVES AT GRAND VIEW HEIGHTS
NEW APARTMENT COMPLEX
LARAMIE, WYOMING



REVISION: REV-1 08-16-24

DATE: 5-23-2024
JOB: 22-3262
SHEET NO.:

C1.0

JGR JonesGillamRenz
730 N. Ninth 1881 Main Street, Suite 301
Salina, KS 67401 Kansas City, MO 64108
785.827.0386 jgr@jgrarchitects.com

COPYRIGHTED ©

GENERAL NOTES:

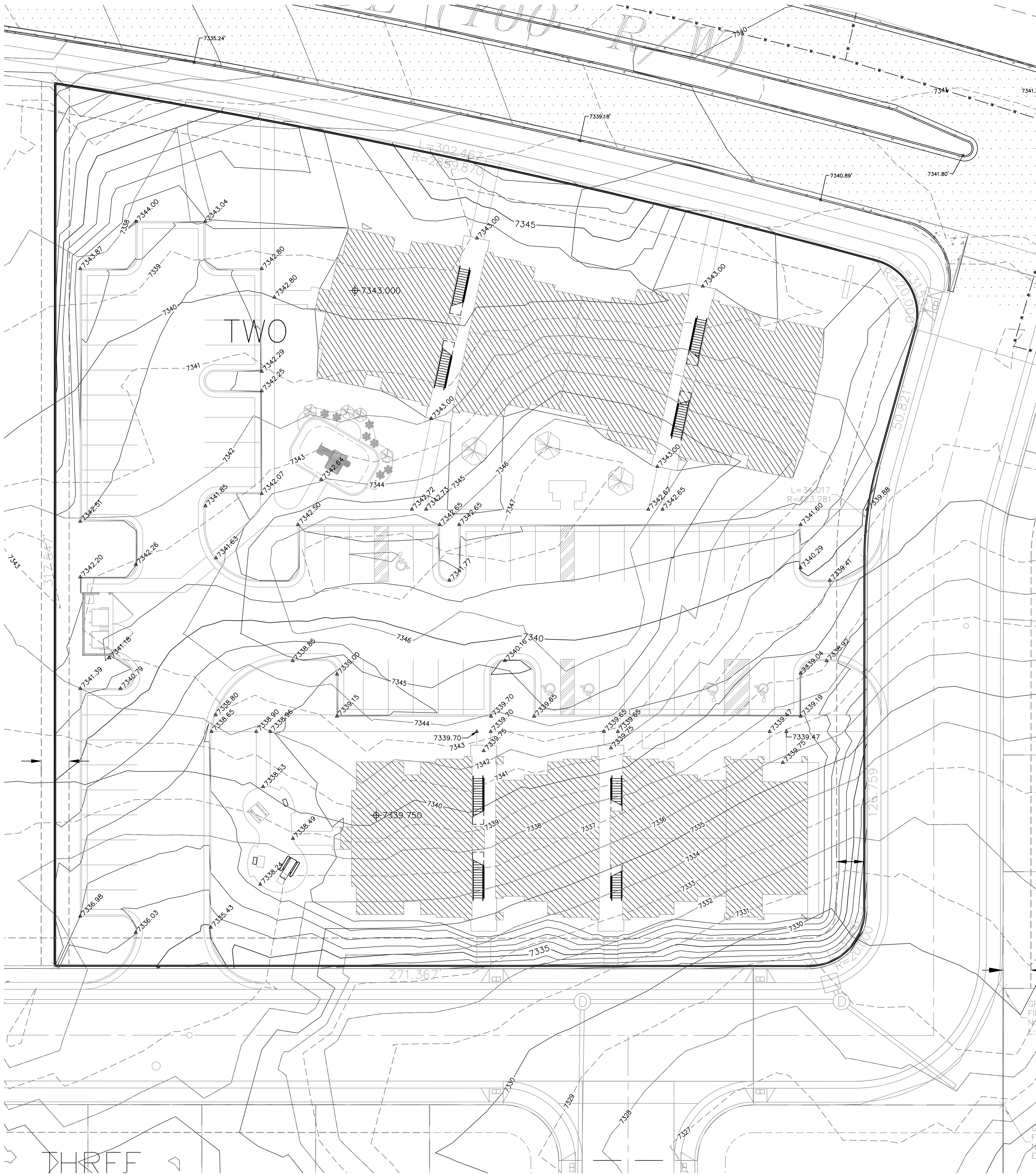
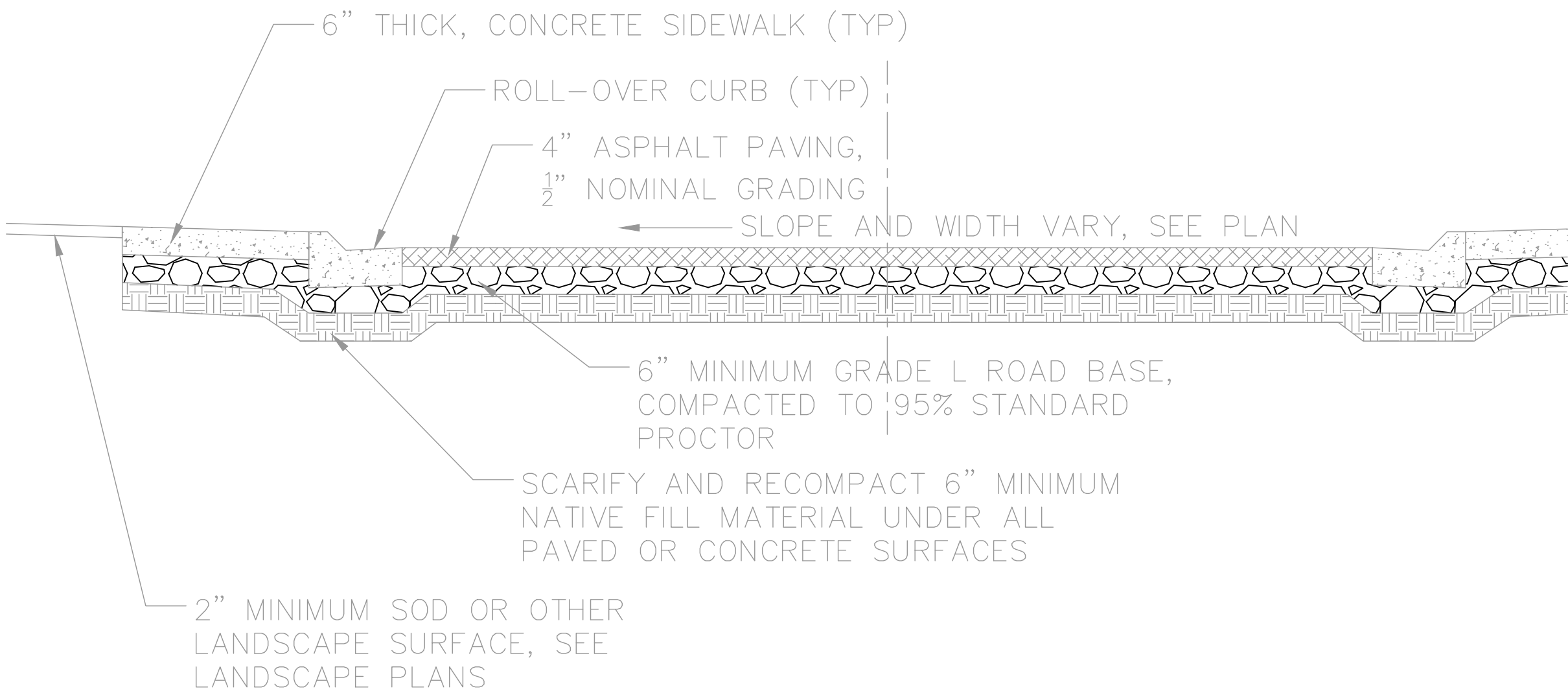
1. CIVIL SITE WORK AND UTILITY INSTALLATION SHALL FOLLOW WYOMING PUBLIC WORKS 2015 STANDARD SPECIFICATIONS WITH CITY OF LARAMIE PROVISIONS AND STANDARD DETAILS.
2. BACKFILL AND PREPARATION UNDER FOUNDATIONS SHALL FOLLOW RECOMMENDATIONS FROM THE GEOTECHNICAL REPORT (PROJECT NO. 24245022) PREPARED BY TERRACON DATED June 10, 2024
3. NEW CURB AND GUTTER ON SITE SHALL BE CITY OF LARAMIE ROLL-OVER CURB.

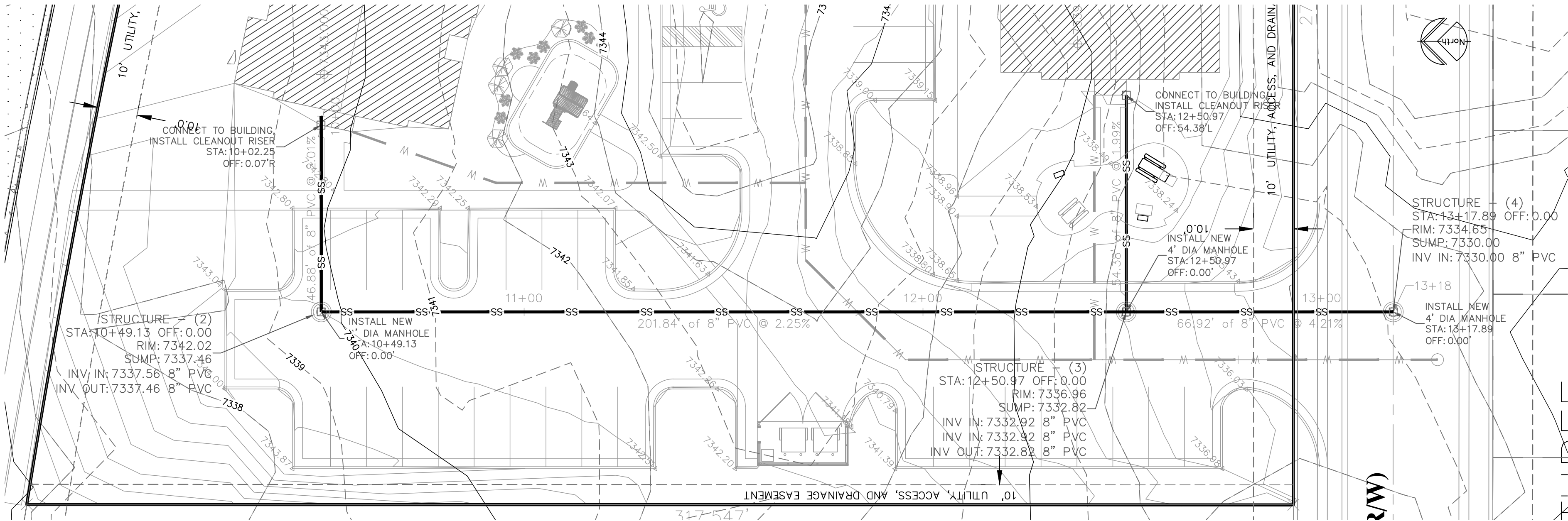
Approximate Cut/Fill Quantities	
To bottom of sub grade	
Cut	6500 Cubic Yards
Fill	4800 Cubic Yards

Approximate Road Base Fill Req	
Fill	1300 Cubic Yards

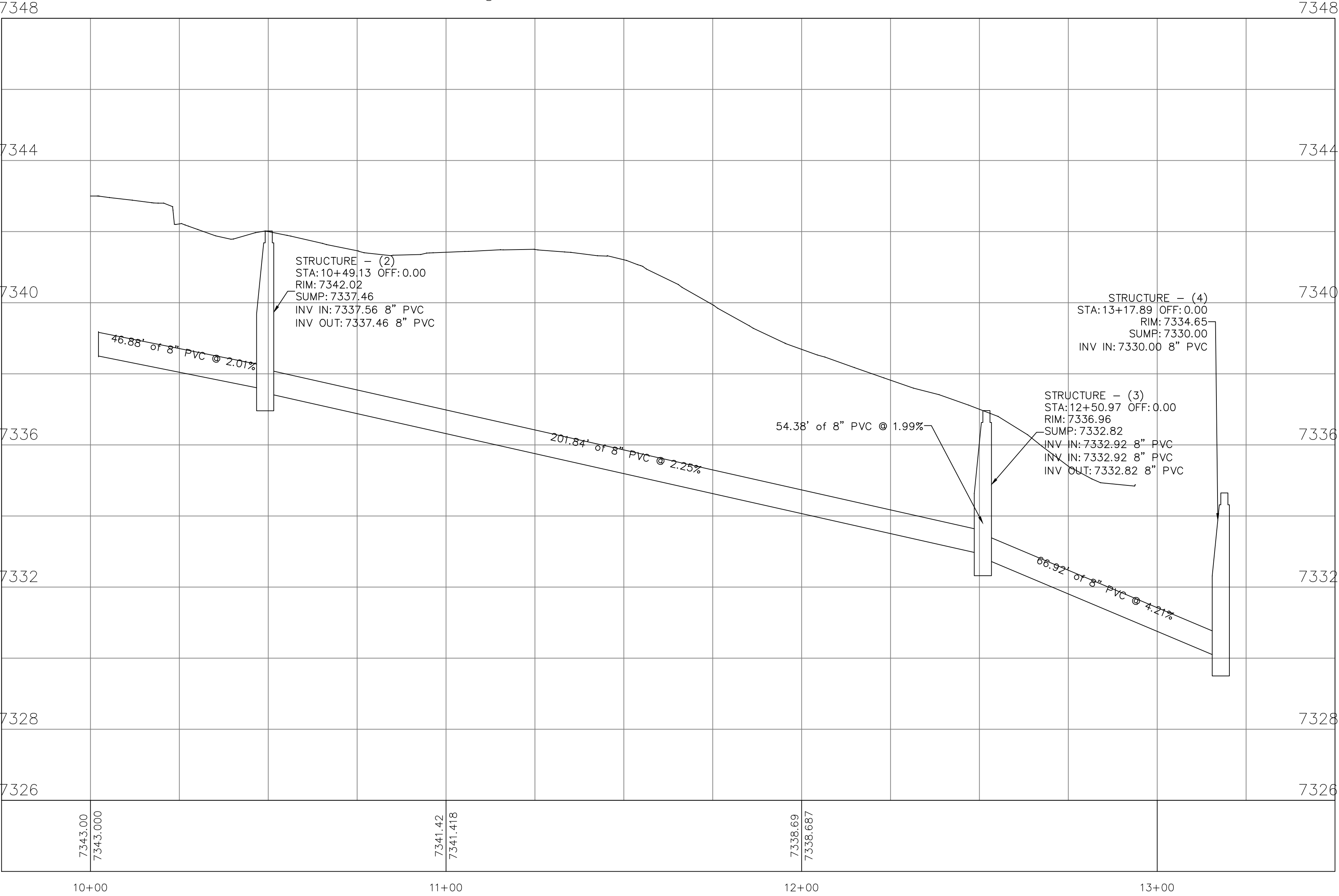
Approximate Asphalt Quantity	
	2950 Square Yards

TYPICAL CROSS SECTION FOR SITE SURFACING

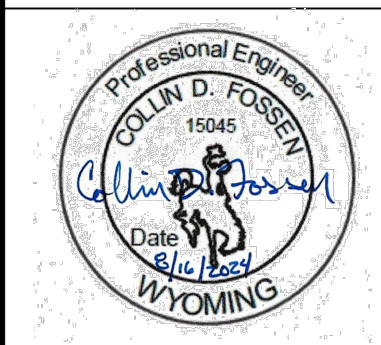




Alignment – SANITARY PROFILE

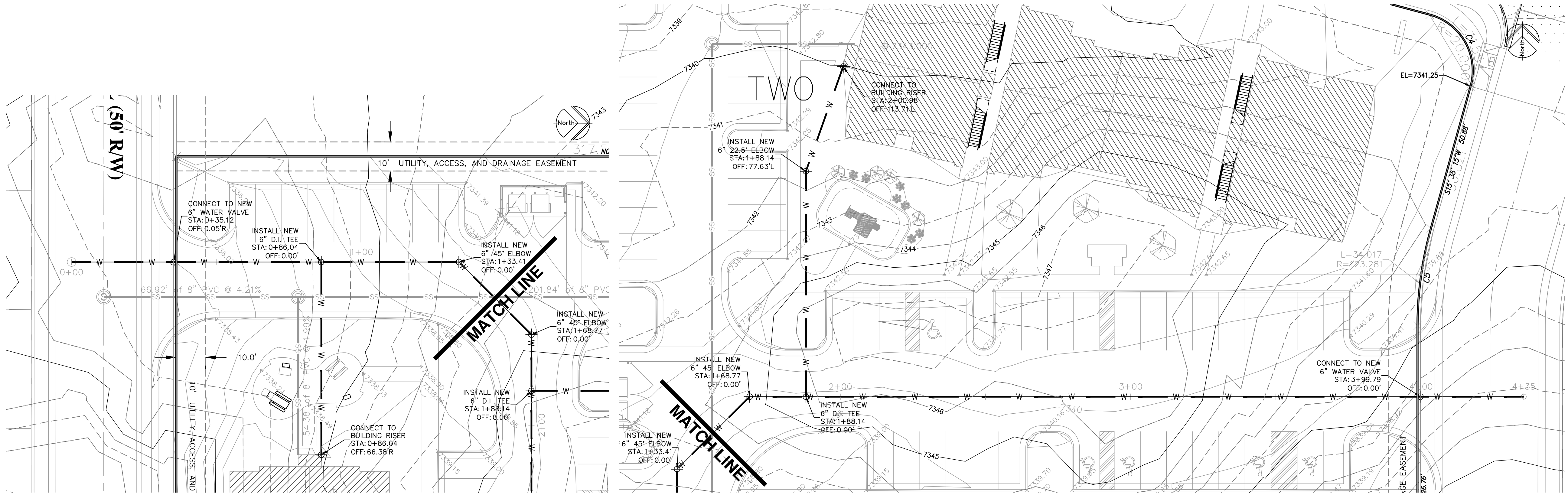


THE RESERVES AT GRAND VIEW HEIGHTS
NEW APARTMENT COMPLEX
LARAMIE, WYOMING

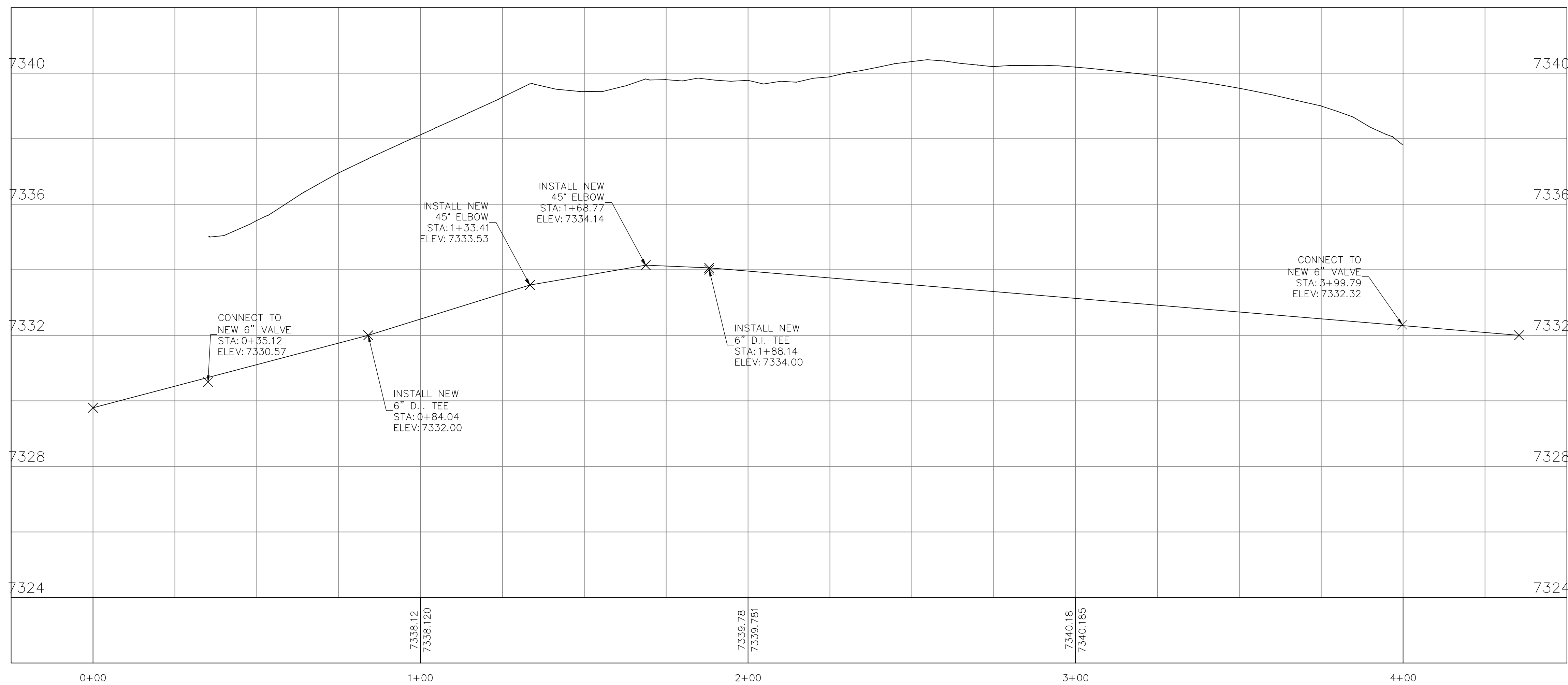


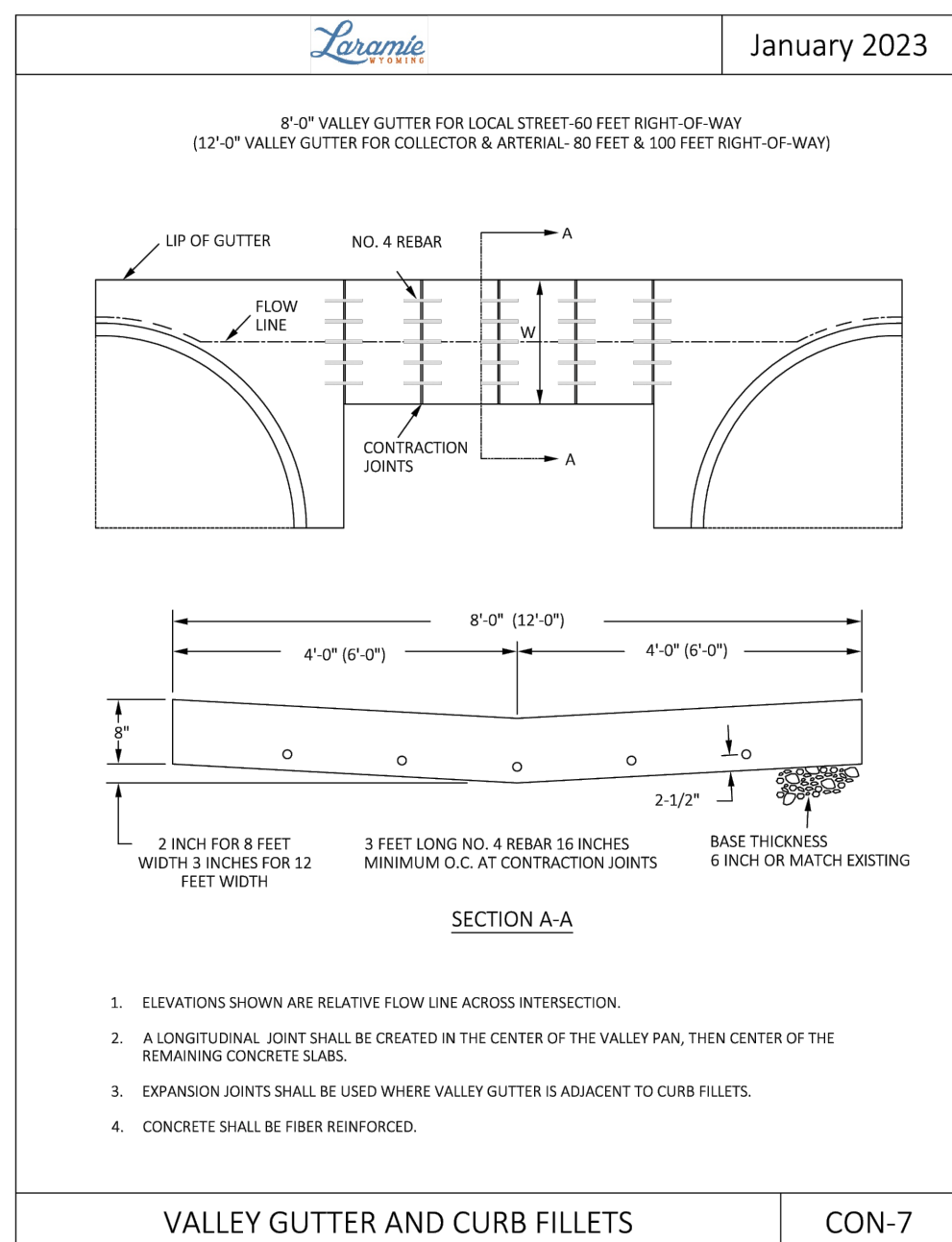
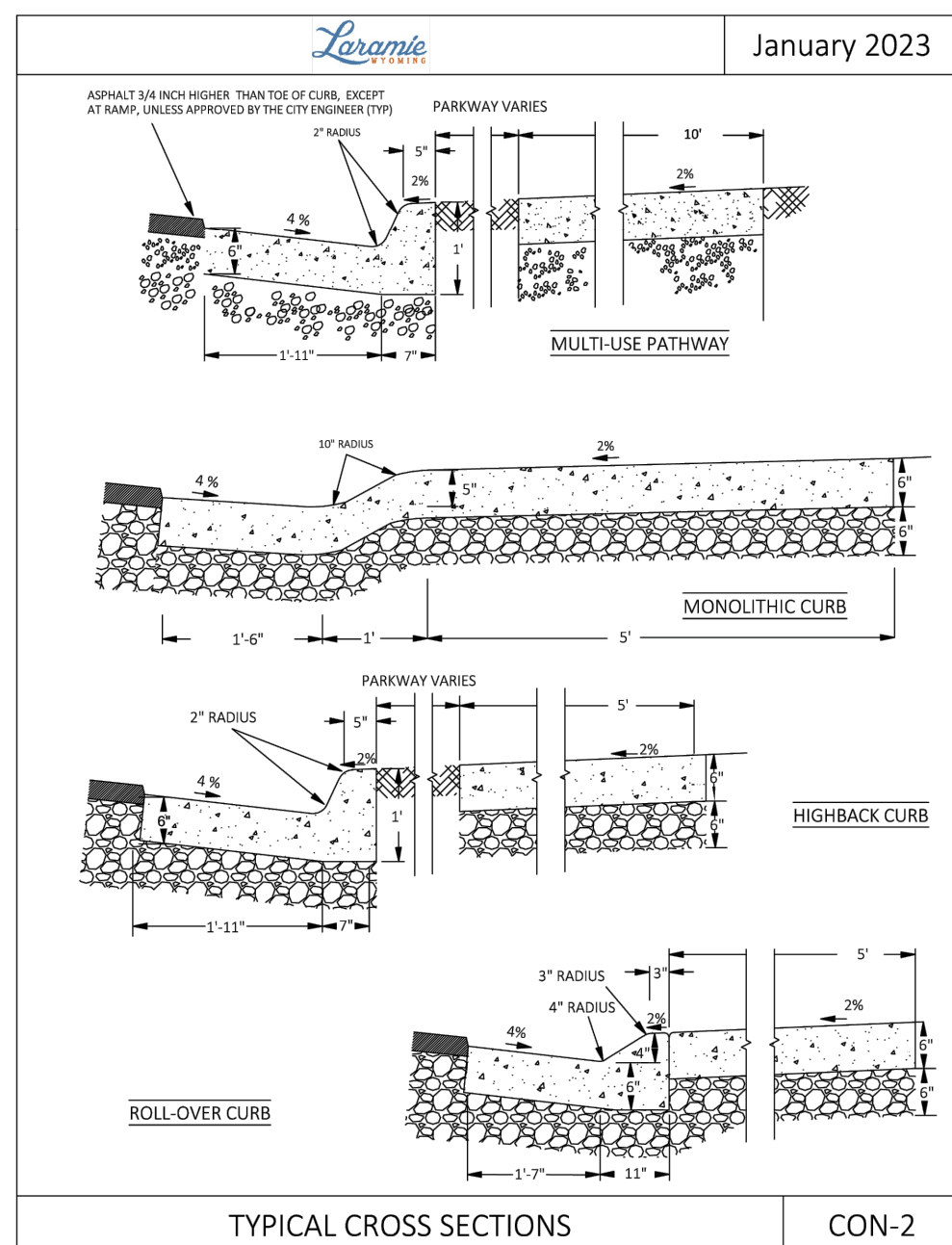
REVISION: REV-1 08-16-24

DATE: 5-23-2024
JOB: 22-3262
SHEET NO.:



Alignment – WATER PROFILE





January 23, 2023

AGGREGATE FOR HOT PLANT MIX
BITUMINOUS PAVEMENT

specification 10-10-10-10

AGGREGATE FOR HOT PLANT MIX
UNTREATED SUB-BASE & BASE

specification 10-10-10-10

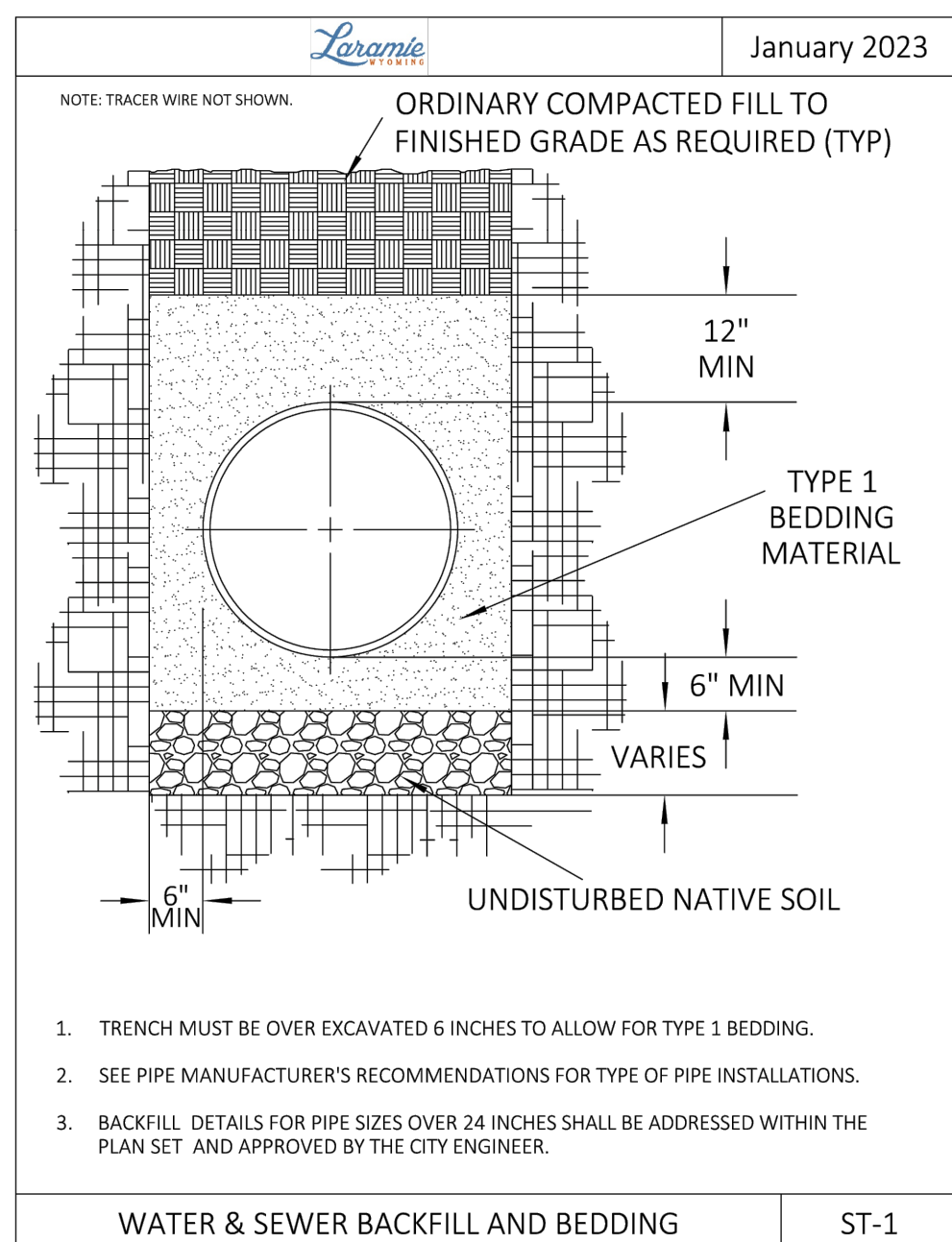
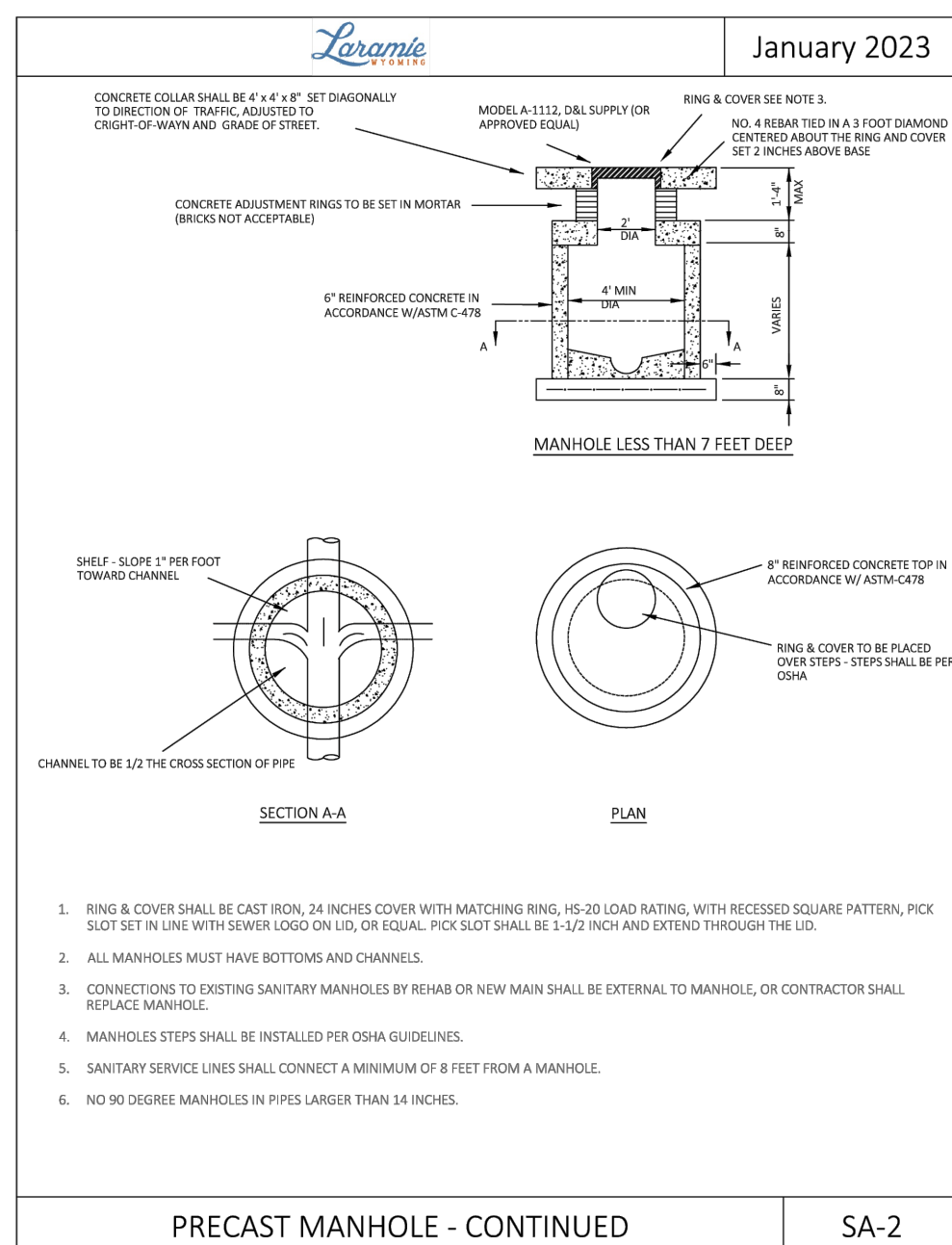
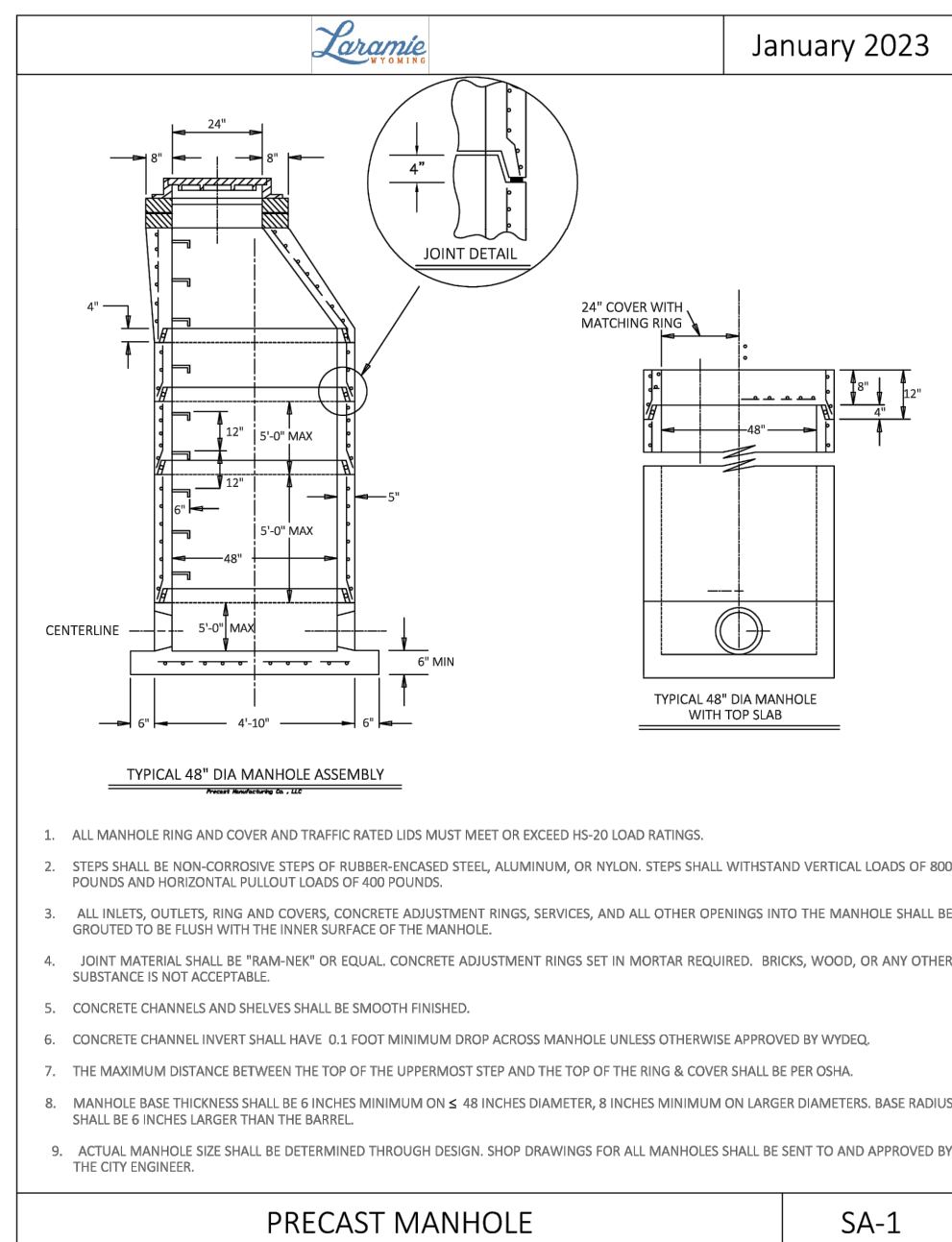
SIEVE DEGRADATION		% BY WEIGHT PASSING	
INCHES	mm	3/4" Max. (19mm)	1 1/2" Max. (12.5mm)
1"	25	100	-
3/4"	19	97-100	100
1/2"	12.5	-	97-100
3/8"	9.5	60-85	-
#4	4.75	40-65	45-70
#8	2.36	25-50	25-50
#10	1.90	10-35	15-40
#20	0.875	2-10	2-11

SIEVE DEGRADATION		% BY WEIGHT PASSING	
INCHES	mm	GRADING "L"	GRADING "H"
2"	-	-	-
1 1/2"	-	100	100
1"	10-100	95-100	-
1/2"	60-85	60-85	-
3/4"	-	-	-
#4	35-55	40-60	-
#8	25-50	33-53	-
#10	10-30	-	-
#20	3-15	3-12	-

1. AGGREGATE GRADATION SPECIFICATIONS ABOVE ARE SHOWN AS CRUSHER SPECIFICATIONS.
2. CRUSHED BASE SHALL BE GRADING "L" OR "H". AGGREGATE SOURCE AND SIEVE ANALYSIS SHALL BE APPROVED BY THE CITY ENGINEER PRIOR TO USE.
3. CRUSHED BASE FOR SURFACE APPLICATION SHALL HAVE AN L. A. ABRASION (AASHTO T-96) RATING OF 40% OR LESS.
4. AGGREGATE FOR HOT PLANT MIX SHALL MEET COMPOSITION OF MIXTURES AS DETAILED IN WPMSS 2512 AND THE CITY OF LARAMIE PAVEMENT STUDY, 2ND EDITION, MAY 2017.
5. ALL SUB-BASE COURSES OF HOT PLANT MIX BITUMINOUS PAVEMENT SHALL BE A MAXIMUM MATERIAL GRADING SPECIFICATION OF 3/4" INCH. ALL SURFACE COURSES OF HOT PLANT MIX BITUMINOUS PAVEMENT SHALL BE A MAXIMUM GRADING SPECIFICATION OF 1/2" INCH.

ROADWAY MATERIALS

PV-1

[illegible]