



Jones Gillam Renz Architects

Address

730 N 9th St. 1881 Main St., Suite 301
Salina, KS 67401 Kansas City, MO 64108

Contact

jgr@jgrarchitects.com
(785) 827-0386

Web

jgrarchitects.com

ARCHITECT'S SUPPLEMENTAL INSTRUCTIONS

JONES GILLAM RENZ DOCUMENT JGR 710

PROJECT:	The Reserves at Grand View Heights New Development Laramie, Wyoming	Report No.	Two (2)
OWNER:	Overland Property Group Dan Maximuk 234 N. Santa Fe Ave, Suite A Salina, KS 67401	Date	October 7, '24
CONTRACTOR:	MCP Group 3501 SW Fairlawn Rd. Topeka, KS 66614	Architect's Proj No.	22-3262
		Contract For:	General Construction Mechanical, Electrical

The work shall be carried out in accordance with the following supplemental instructions issued in accordance with the Contract Documents without change in Contract Sum or Contract Time. Prior to proceeding in accordance with these instructions, indicate your acceptance of these instructions for minor change to the Work as consistent with the Contract Documents and return a copy to the Architect.

DESCRIPTION:

Contractor to make adjustments as needed and required per the modifications as indicated on attached drawings and in the below descriptions:

DRAWINGS:

1. Sheet S501 – foundation depths were revised to 42" depths & references were created for alternate details in each trench footing detail
2. Sheet S502 – This sheet was added in order to provide alternate "Strip Footings" in lieu of the previously detailed "Trench Footings".

Attachments:

1. Revised/Added Structural Sheets: S501, S502

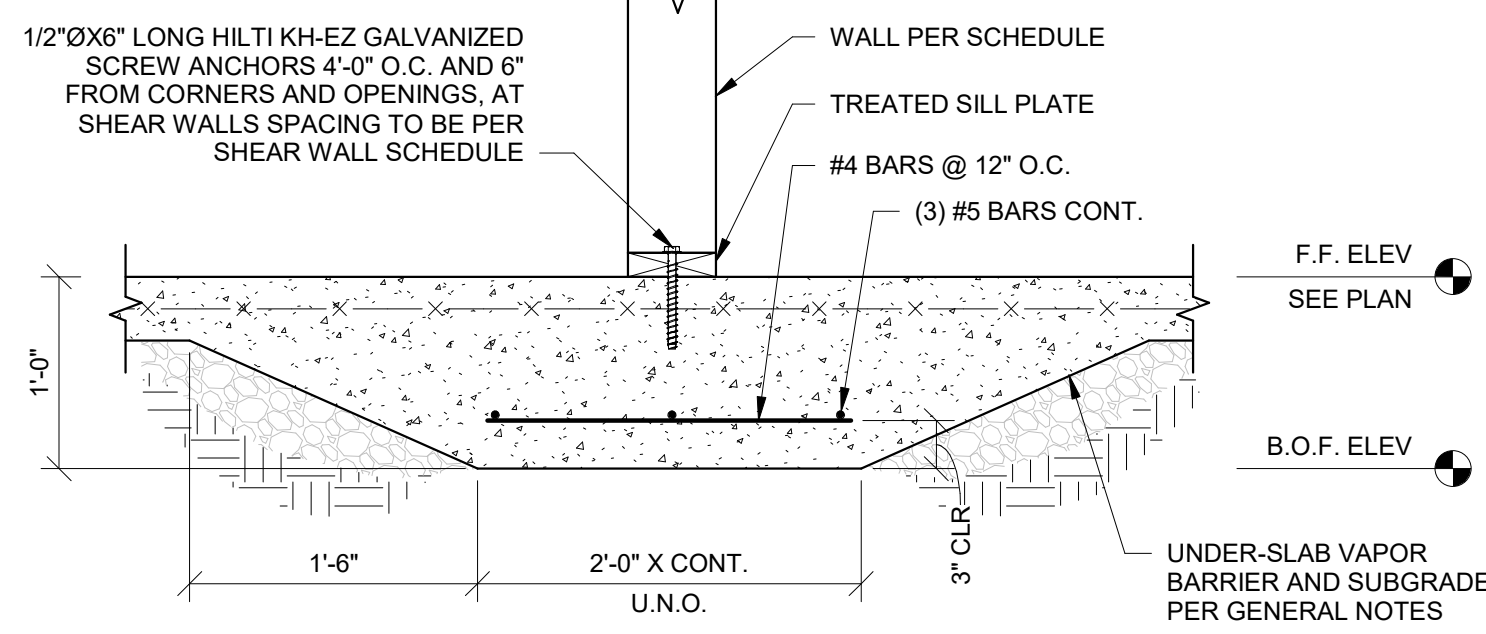
Issued by:

Jones Gillam Renz Architects PO Box 2928, Salina, KS 67402
Maggie Gillam, Project Architect

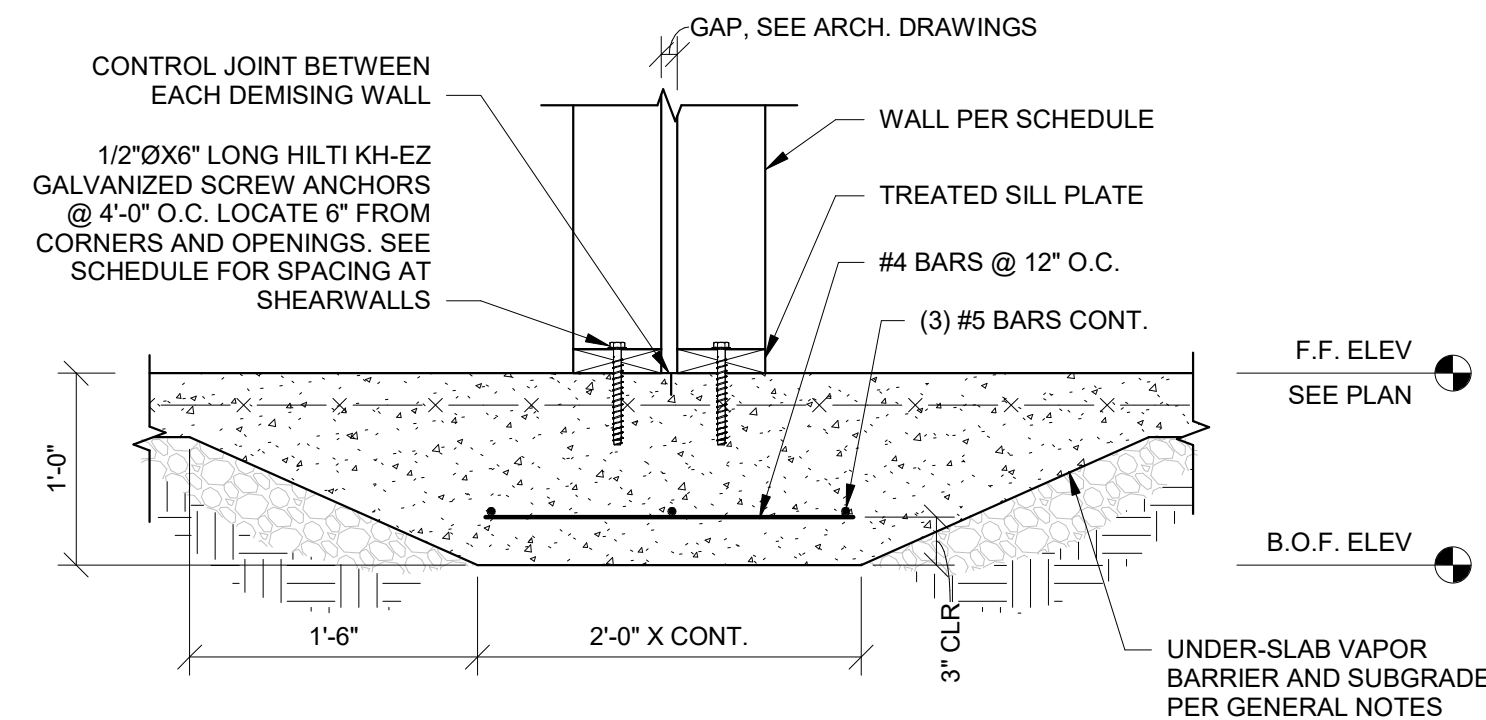
mgillam@jgrarchitects.com

Copies to:

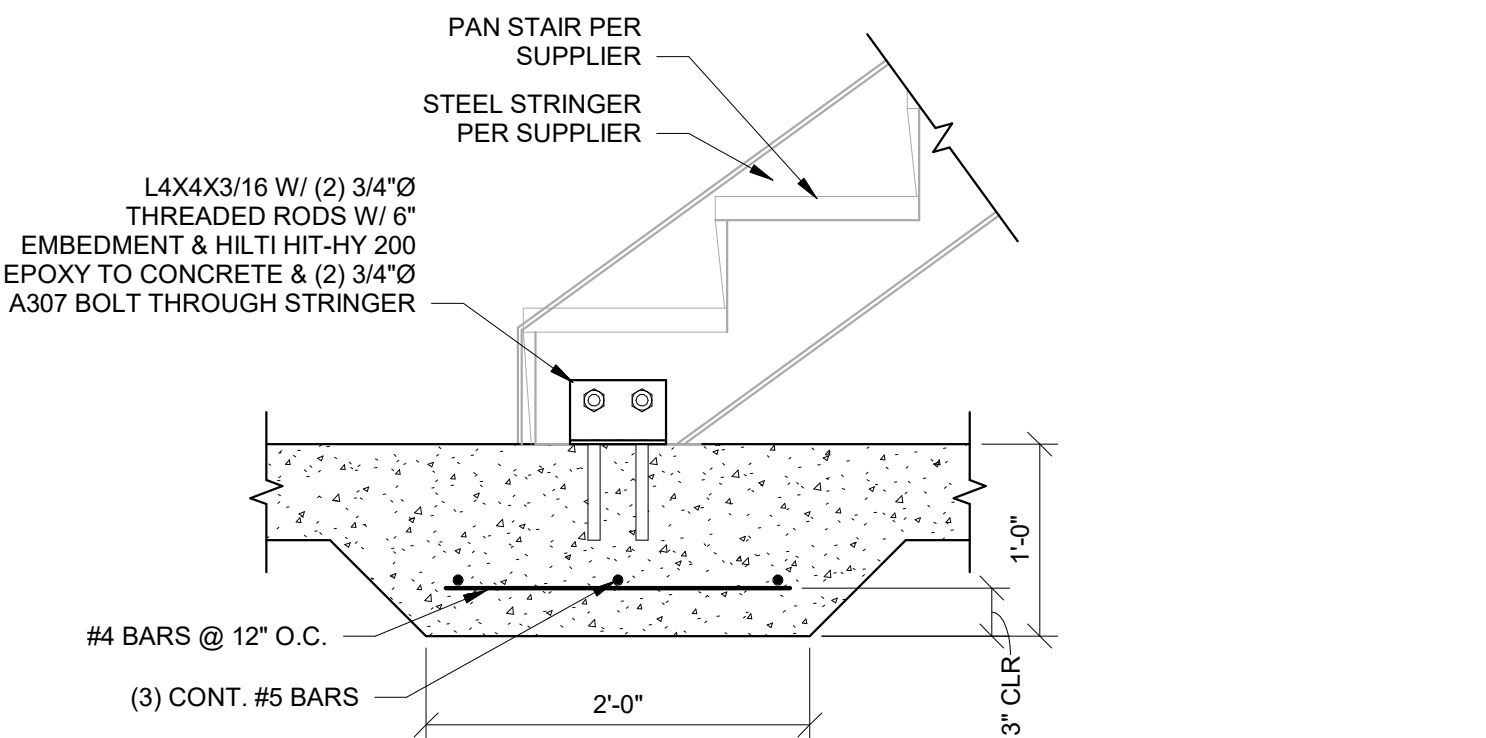
MCP Group – Brian Murphy
OPG- Dan Maximuk, Austin Kack, Raegan Brown, Amanda Klaus
LST – Ryan Lies
Structural – Isaac Cundiff, Marcus Himmelberg
Civil – Collin Fossen



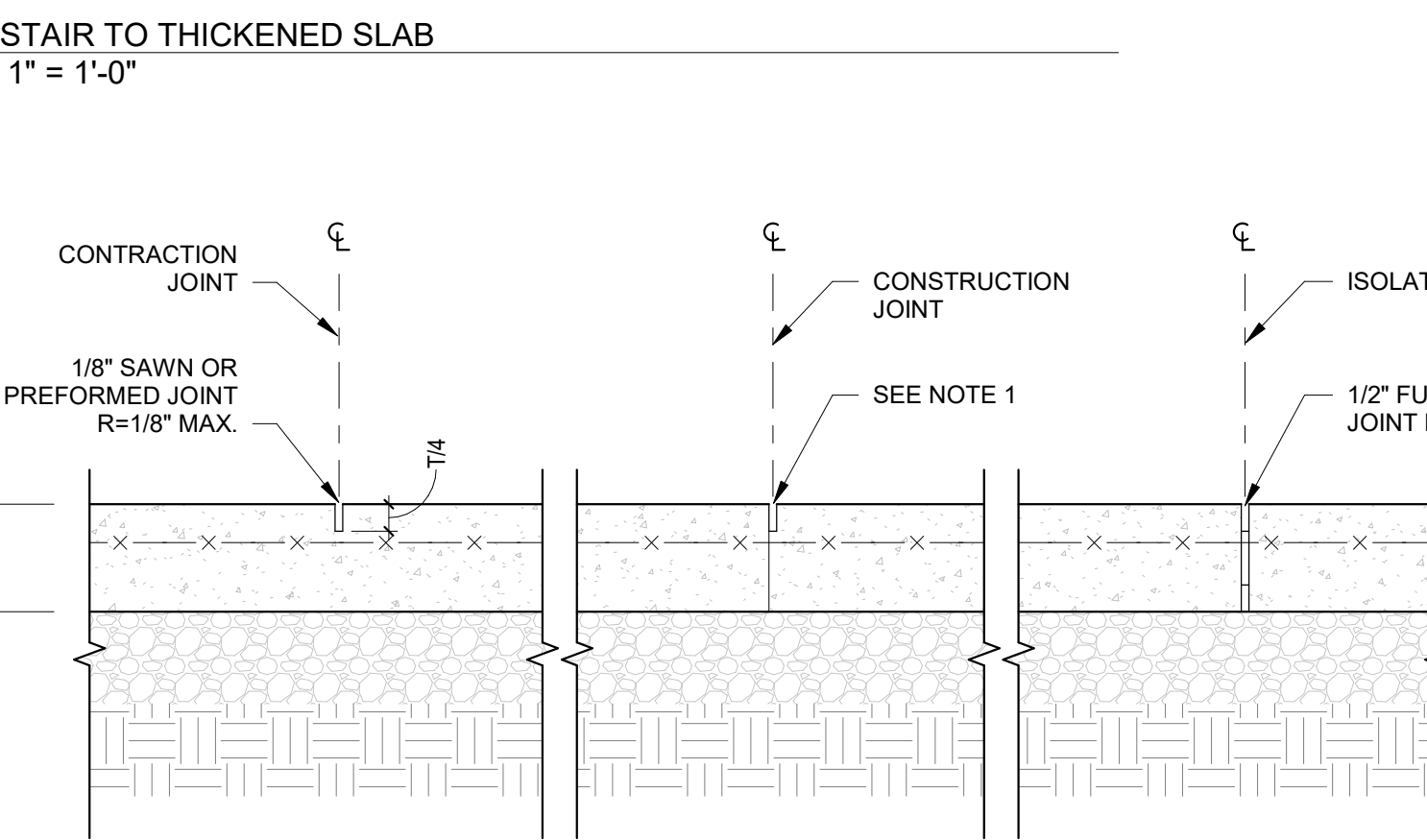
1 INTERIOR BEARING WALL AT THICKENED SLAB
S501 1" = 1'-0"



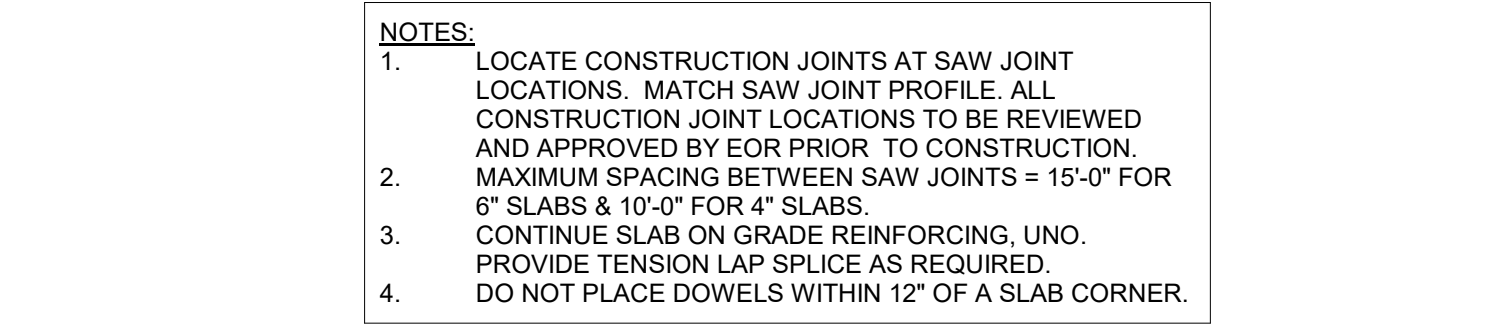
2 SECTION AT SHEAR WALL HOLD DOWN
S501 1" = 1'-0"



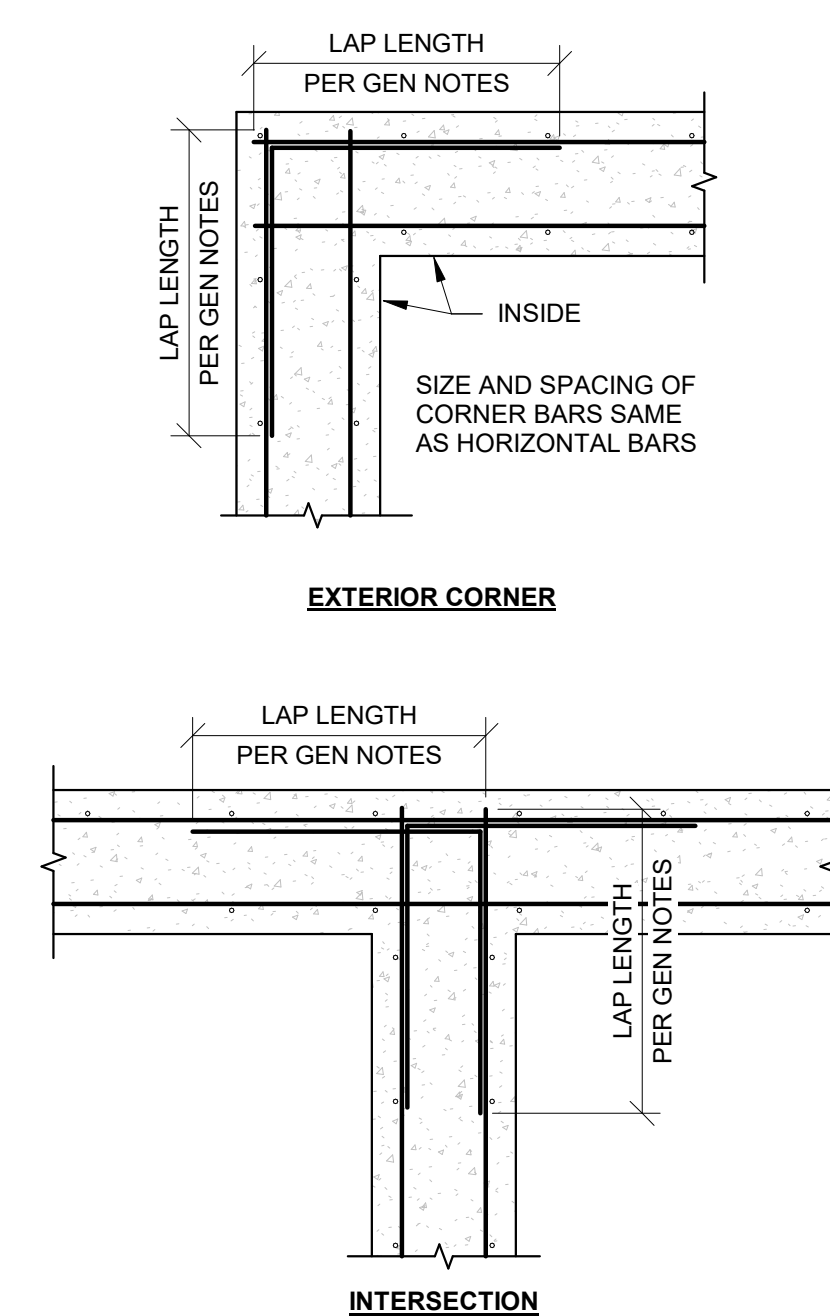
3 DOUBLE SHEARWALL HOLD DOWN
S501 1" = 1'-0"



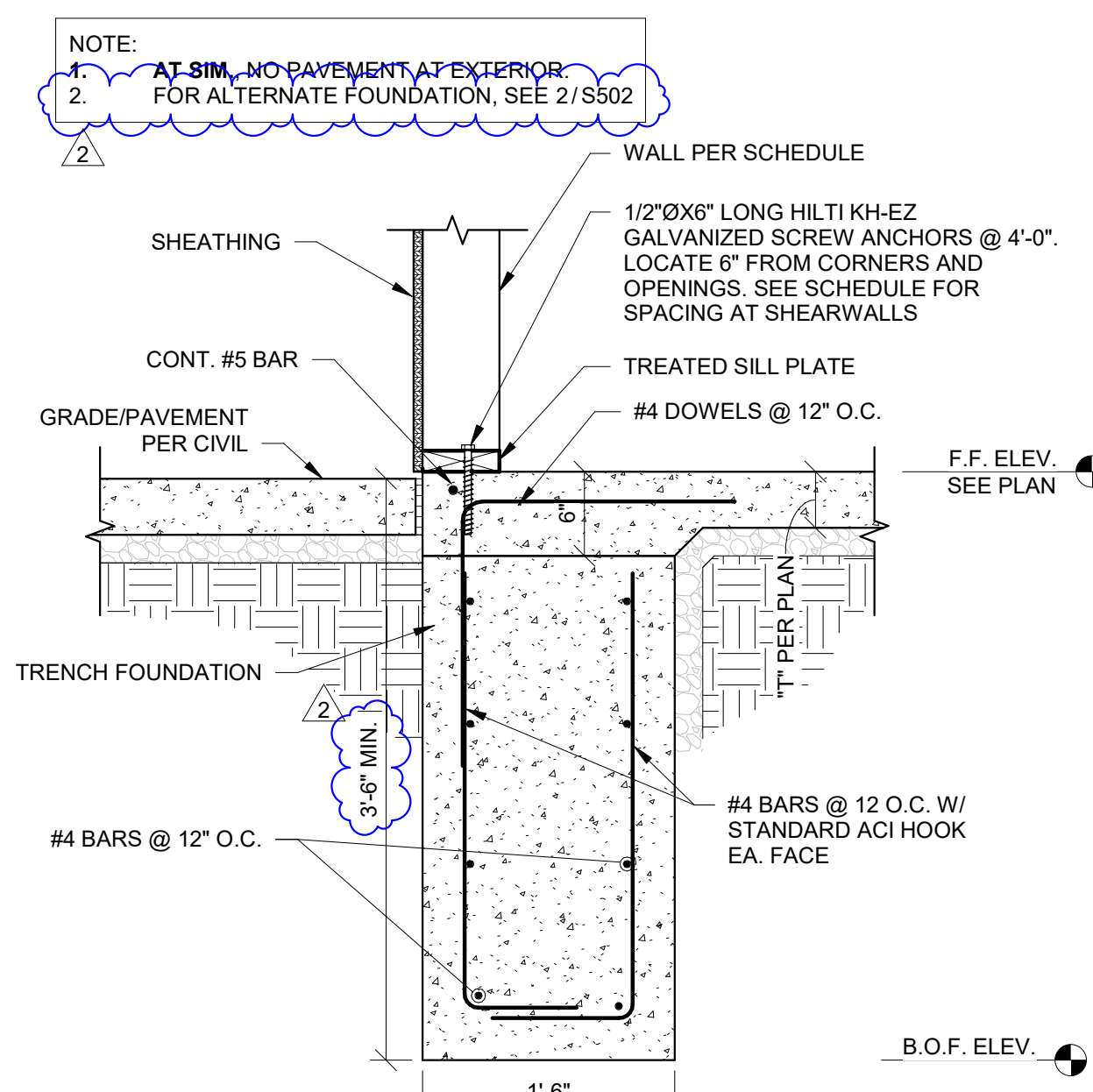
4 COLUMN AT FOUNDATION
S501 3/4" = 1'-0"



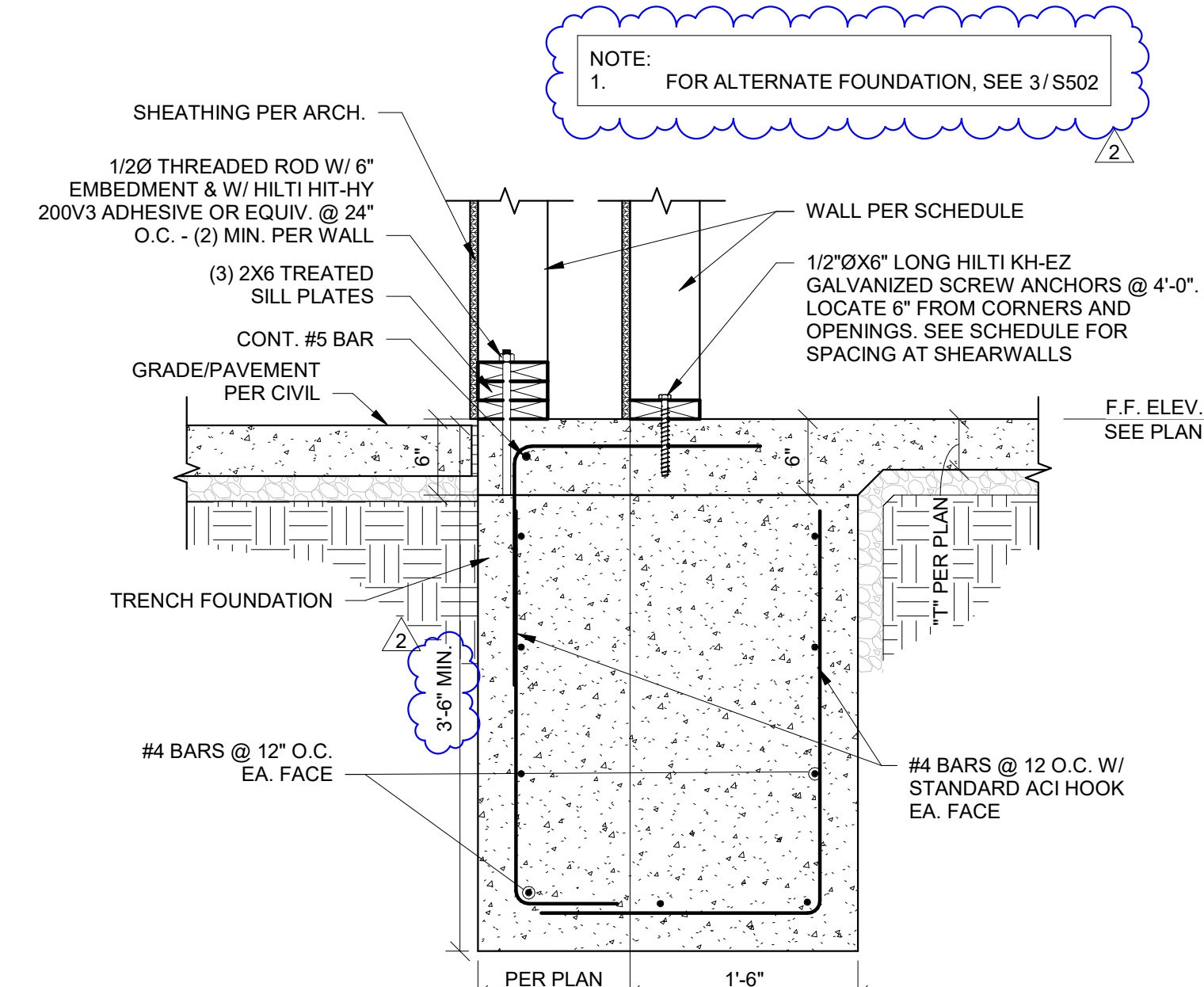
5 STAIR TO THICKENED SLAB
S501 1" = 1'-0"



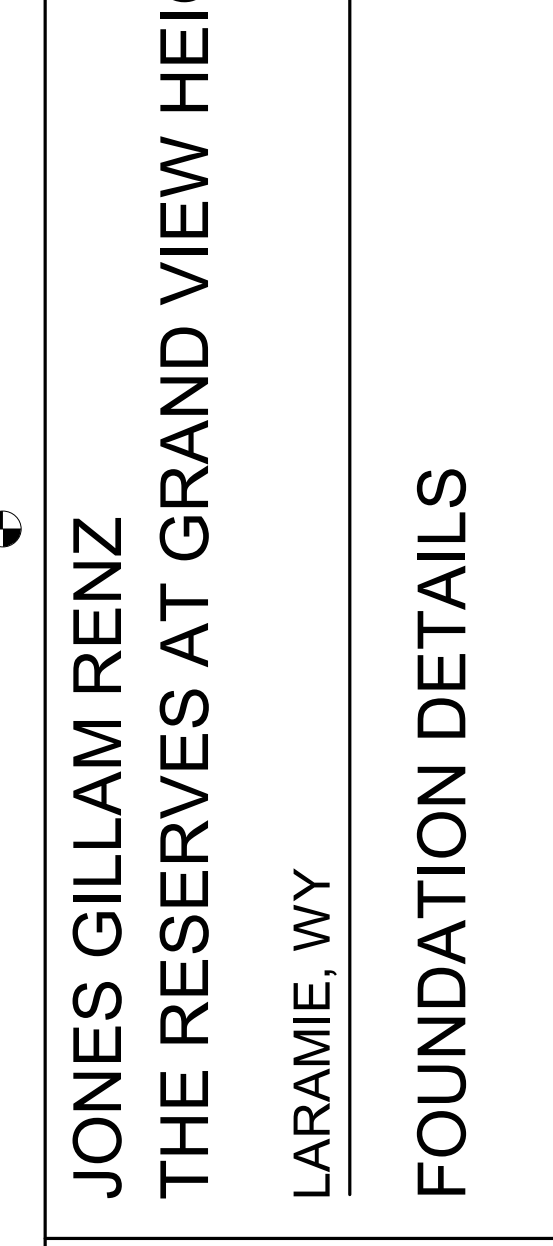
6 TYPICAL SLAB ON GRADE JOINTS
S501 1" = 1'-0"



7 CORNER BAR DETAIL
S501 3/4" = 1'-0"



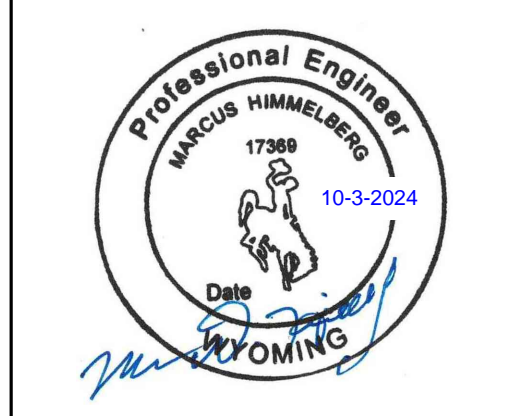
8 SECTION AT FOOTING
S501 1" = 1'-0"



9 FOUNDATION AT BUMP OUT
S501 1" = 1'-0"

NOTICE:
McClure Engineering Co. is not responsible or liable for any issues, claims, damages, or losses (collectively, "Losses") which arise from failure to follow these Plans, Specifications, and the engineering intent they convey, or for Losses which arise from failure to obtain and/or follow the engineers' or surveyors' guidance with respect to any alleged errors, omissions, inconsistencies, ambiguities, or conflicts contained within the Plans or Specifications.

WYOMING CERTIFICATE OF AUTHORITY
NO. E-1790
EXPIRES: DECEMBER 31, 2025



MARCUS HIMMELBERG
17369
12/31/2024

I HEREBY CERTIFY THAT THIS ENGINEERING DOCUMENT WAS PREPARED BY ME OR UNDER MY DIRECT PERSONAL SUPERVISION AND THAT I AM A DULY LICENSED PROFESSIONAL ENGINEER UNDER THE LAWS OF THE STATE OF WYOMING.

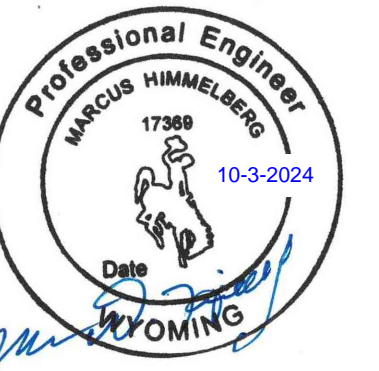
No.	Description	Date
2	ALTERNATE FOUNDATIONS	10/02/2024

PROJECT NUMBER: 2024000185
SET ISSUE DATE: 07/17/2024
ENGINEER: MDH
DRAWN BY: CEL
CHECKED BY: IWC

JONES GILLAM RENZ
 THE RESERVES AT GRAND VIEW HEIGHTS
 LARAMIE, WY
 FOUNDATION DETAILS

NOTICE:
McClure Engineering Co. is not responsible or liable for any issues, claims, damages, or losses (collectively, "Losses") which arise from failure to follow these Plans, Specifications, and the engineering intent they convey, or for Losses which arise from failure to obtain and/or follow the engineers' or surveyors' guidance with respect to any alleged errors, omissions, inconsistencies, ambiguities, or conflicts contained within the Plans or Specifications.

WYOMING CERTIFICATE OF AUTHORITY
NO. E-1790
EXPIRES: DECEMBER 31, 2025



MARCUS HIMMELBERG
17369
12/31/2024

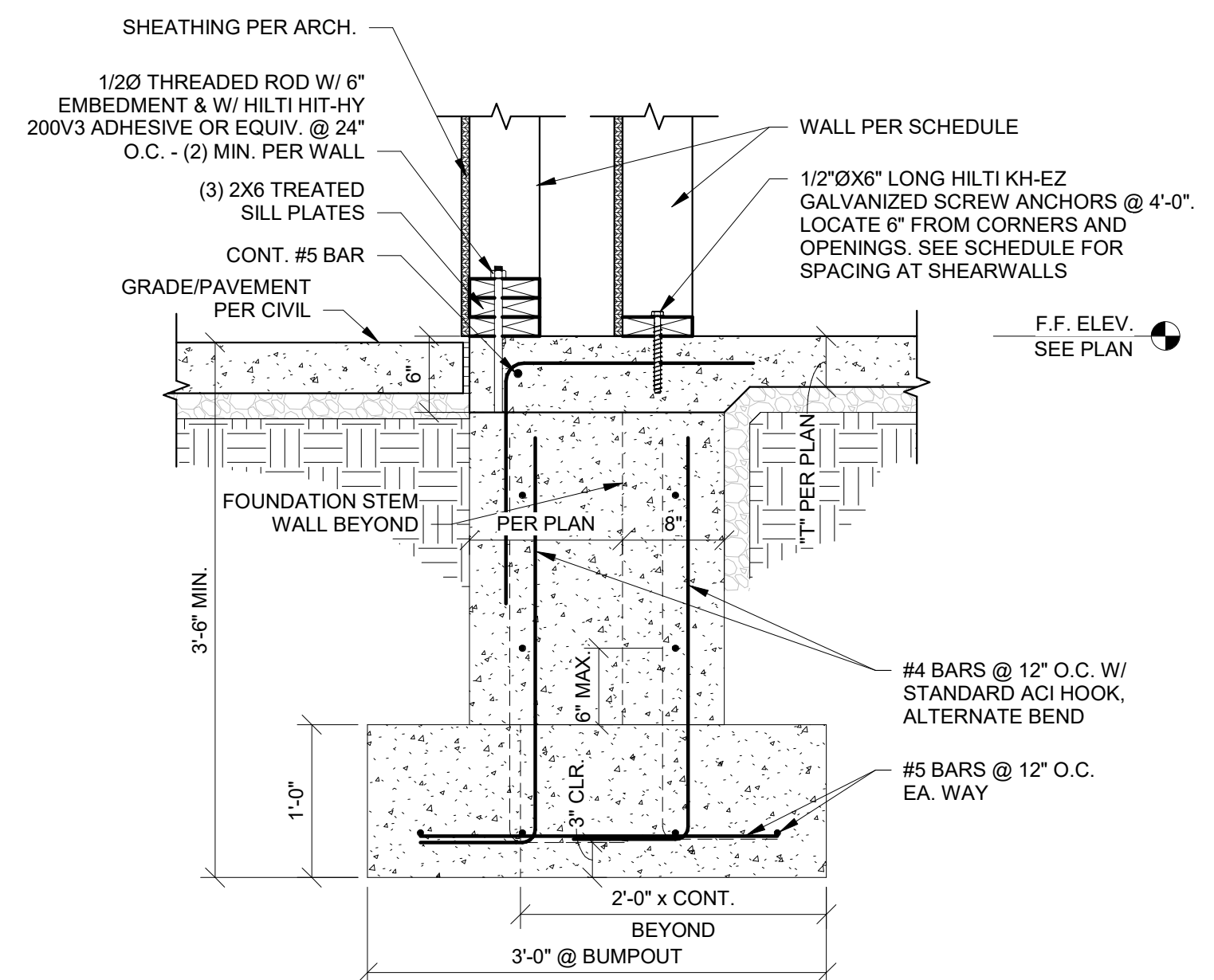
I HEREBY CERTIFY THAT THIS ENGINEERING DOCUMENT WAS PREPARED BY ME OR UNDER MY DIRECT PERSONAL SUPERVISION AND THAT I AM A DULY LICENSED PROFESSIONAL ENGINEER UNDER THE LAWS OF THE STATE OF WYOMING.

No.	Description	Date
2	ALTERNATE FOUNDATIONS	10/02/2024

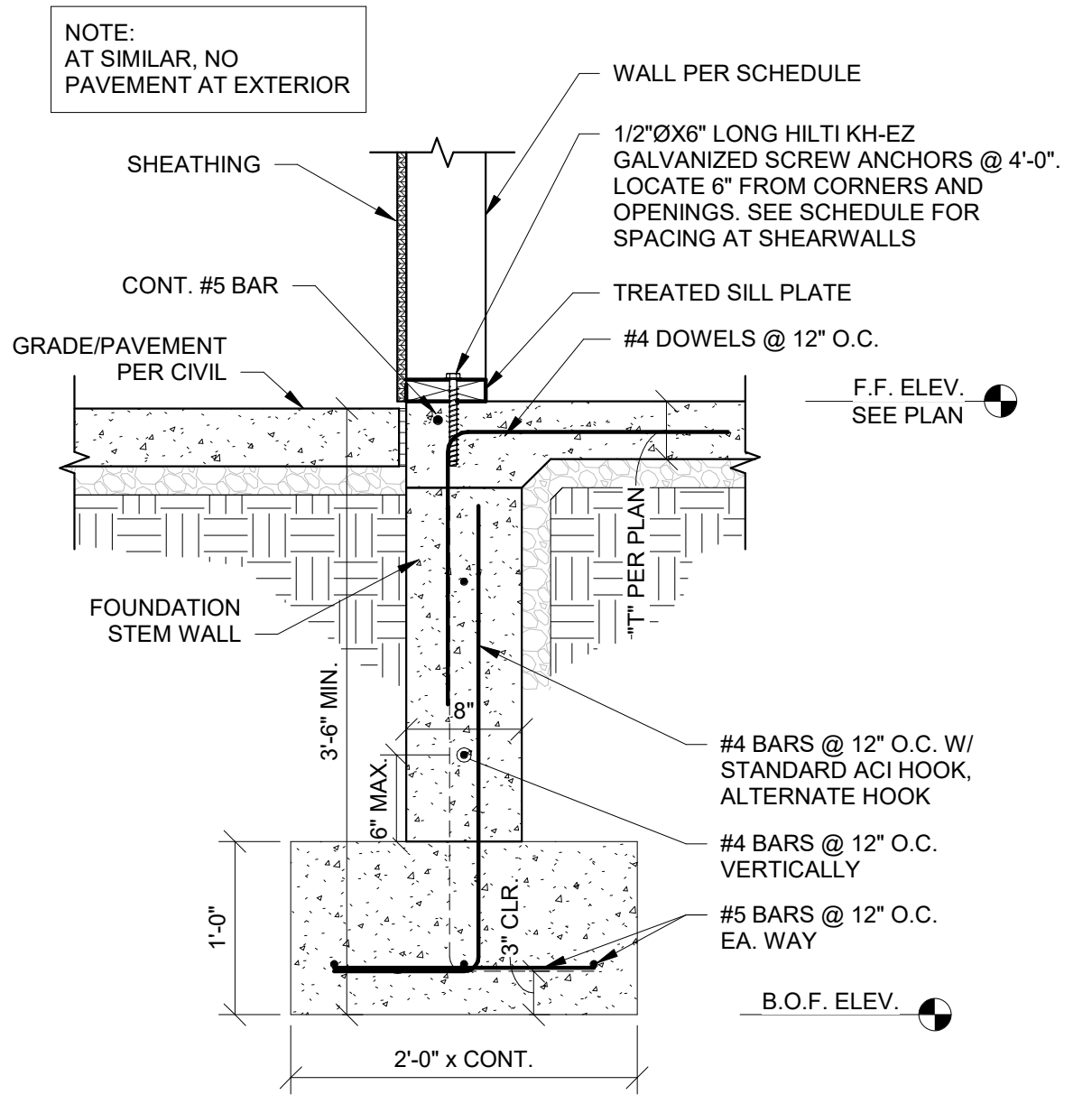
PROJECT NUMBER: 2024000185
SET ISSUE DATE: 07/17/2024
ENGINEER: MDH
DRAWN BY: CEL
CHECKED BY: IWC

JONES GILLAM RENZ
THE RESERVES AT GRAND VIEW HEIGHTS
LARAMIE, WY
FOUNDATION DETAILS

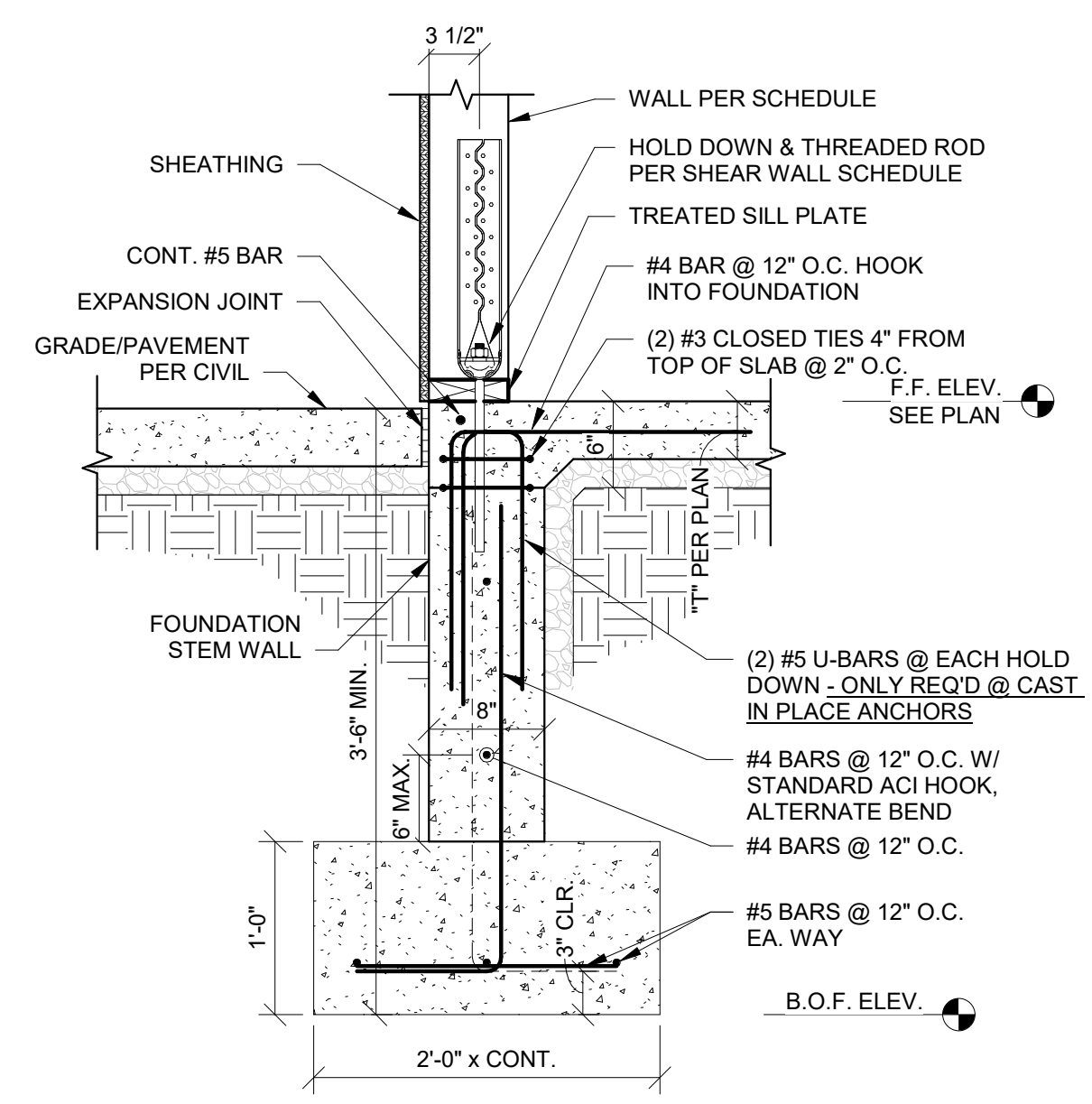
DRAWING NO.
S502



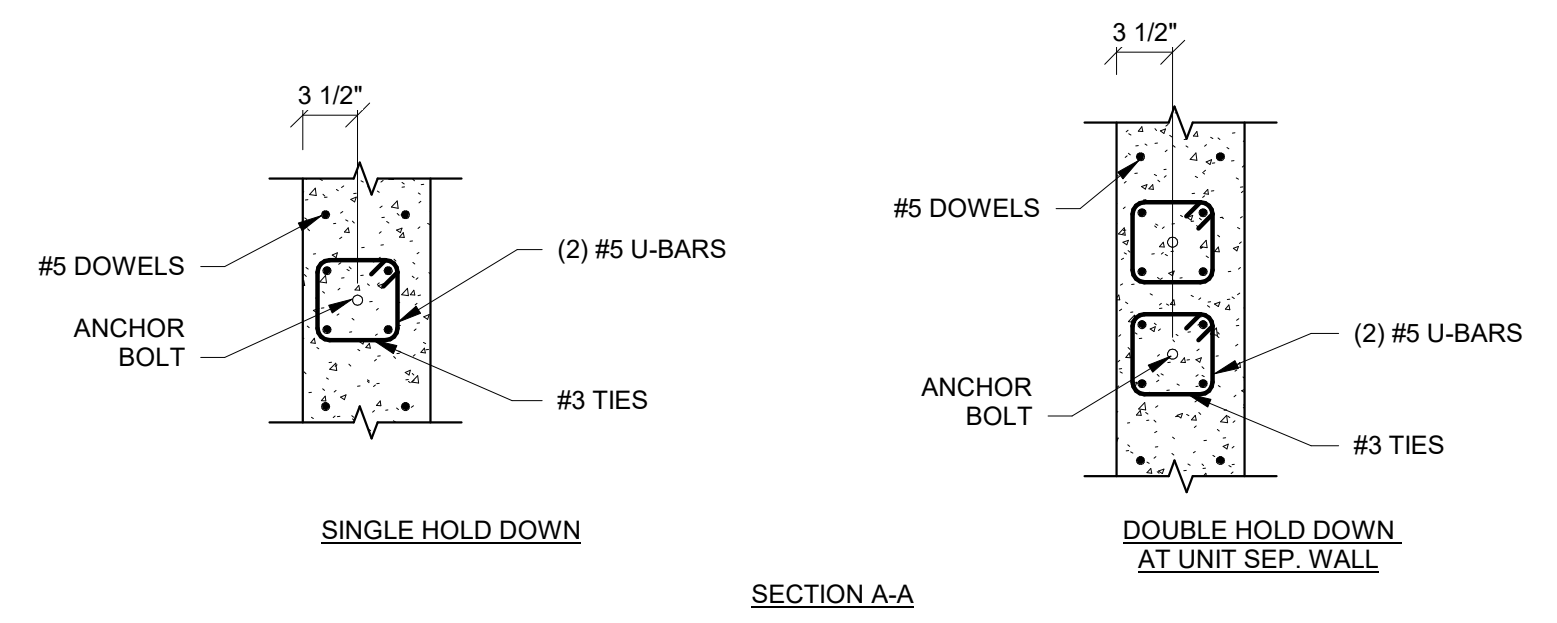
3 FOUNDATION AT BUMP OUT ALT @ STRIP FOOTING
1" = 1'-0"



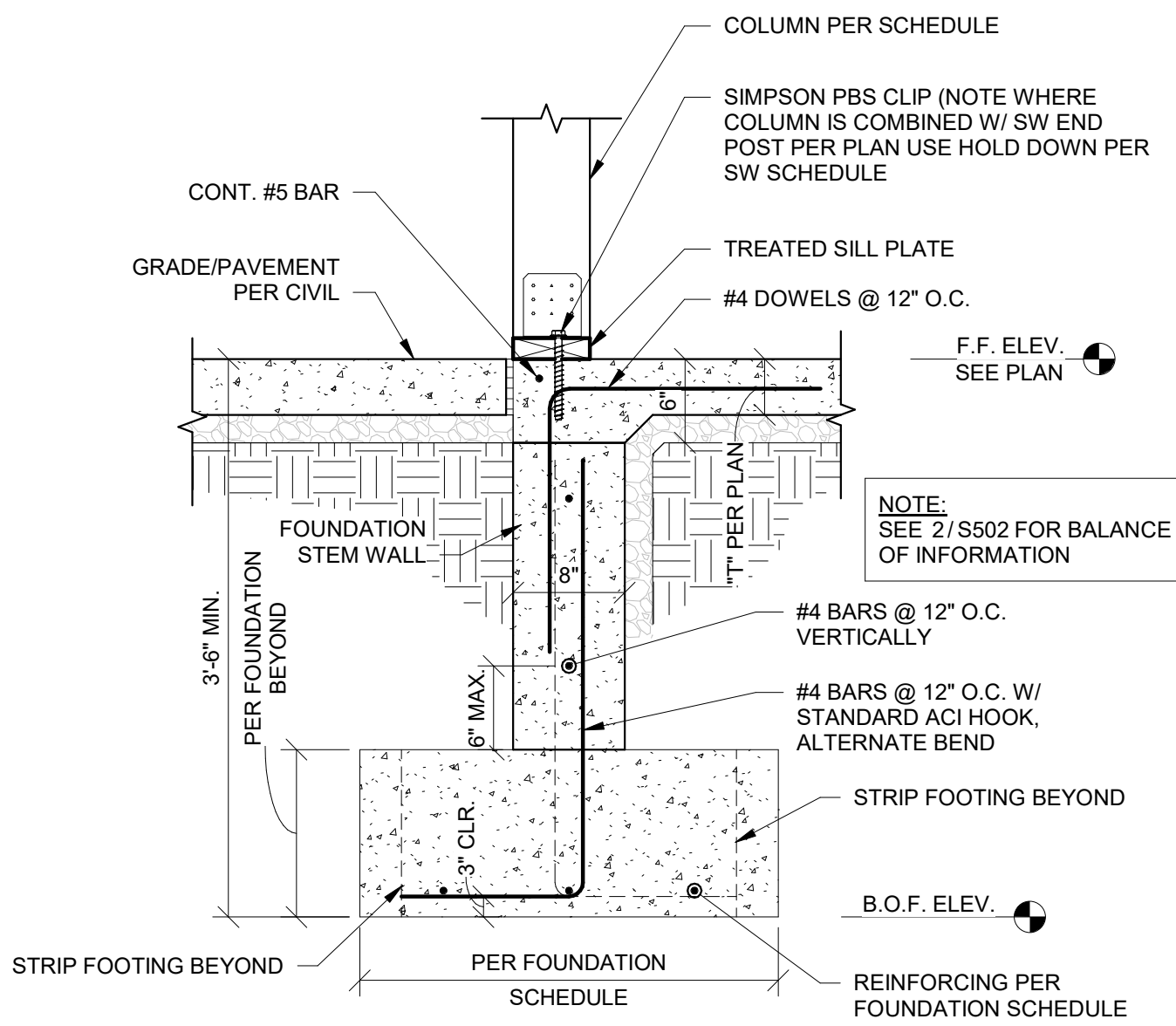
2 SECTION AT FOOTING ALT @ STRIP FOOTING
1" = 1'-0"



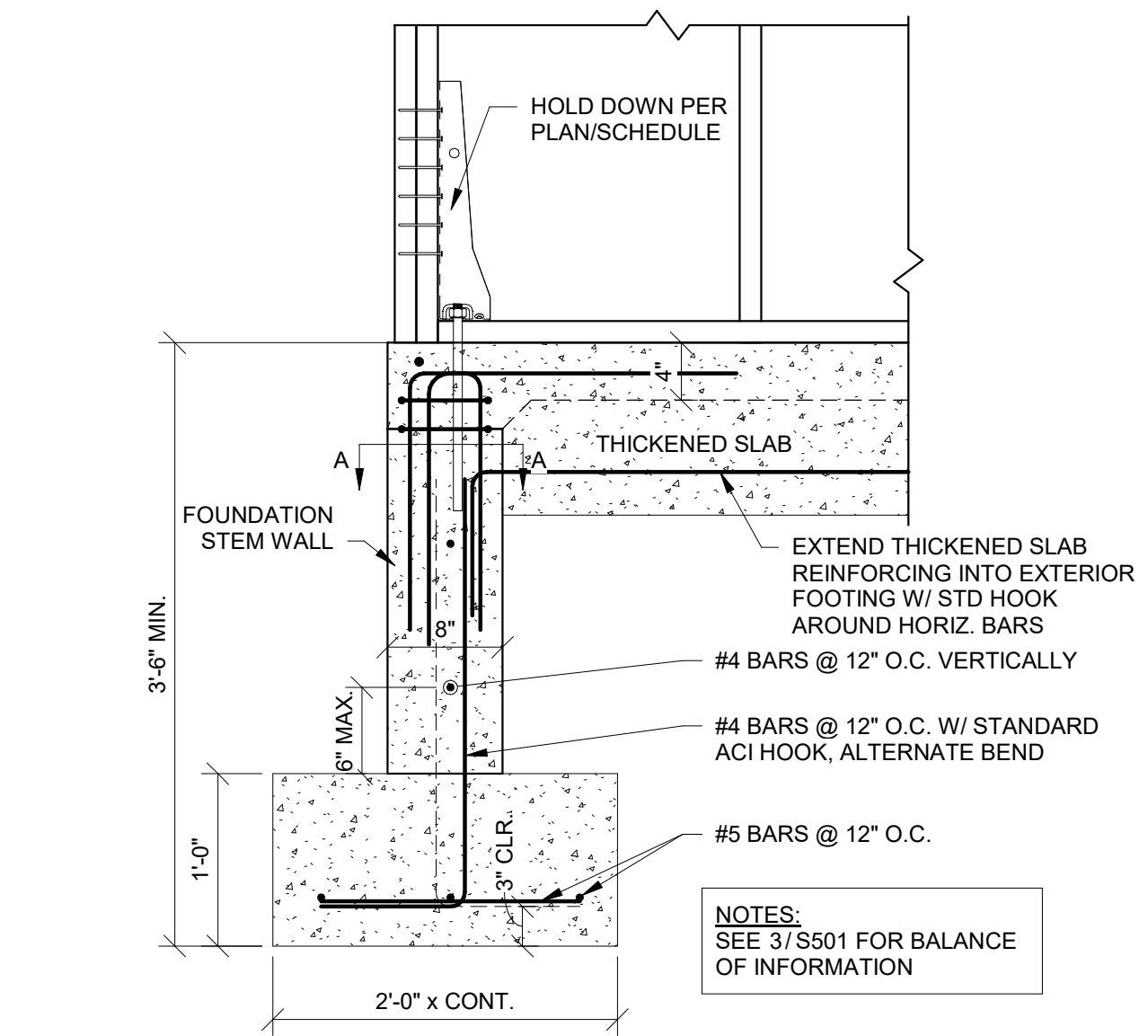
1 SECTION AT SHEAR WALL HOLD DOWN ALT @ STRIP FOOTING
1" = 1'-0"



SECTION A-A



5 COLUMN AT FOUNDATION AT EXTERIOR ALT @ STRIP FOOTING
1" = 1'-0"



4 DOUBLE SHEARWALL HOLD DOWN ALT @ STRIP FOOTING
1" = 1'-0"

P:\2024\00185-000 - JGR - The Reserves at Grand View Heights\04-Drawings\2024000185 - JGR - THE RESERVES AT GRAND VIEW HEIGHTS - R23.rvt