

REVISION: REV-1 08-16-24

DATE: 5-23-2024
 JOB: 22-3262
 SHEET NO.:

GENERAL NOTES:

1. CIVIL SITE WORK AND UTILITY INSTALLATION SHALL FOLLOW WYOMING PUBLIC WORKS 2015 STANDARD SPECIFICATIONS WITH CITY OF LARAMIE PROVISIONS AND STANDARD DETAILS.
2. BACKFILL AND PREPARATION UNDER FOUNDATIONS SHALL FOLLOW RECOMMENDATIONS FROM THE GEOTECHNICAL REPORT (PROJECT NO. 24245022) PREPARED BY TERRACON DATED June 10, 2024
3. NEW CURB AND GUTTER ON SITE SHALL BE CITY OF LARAMIE ROLL-OVER CURB.

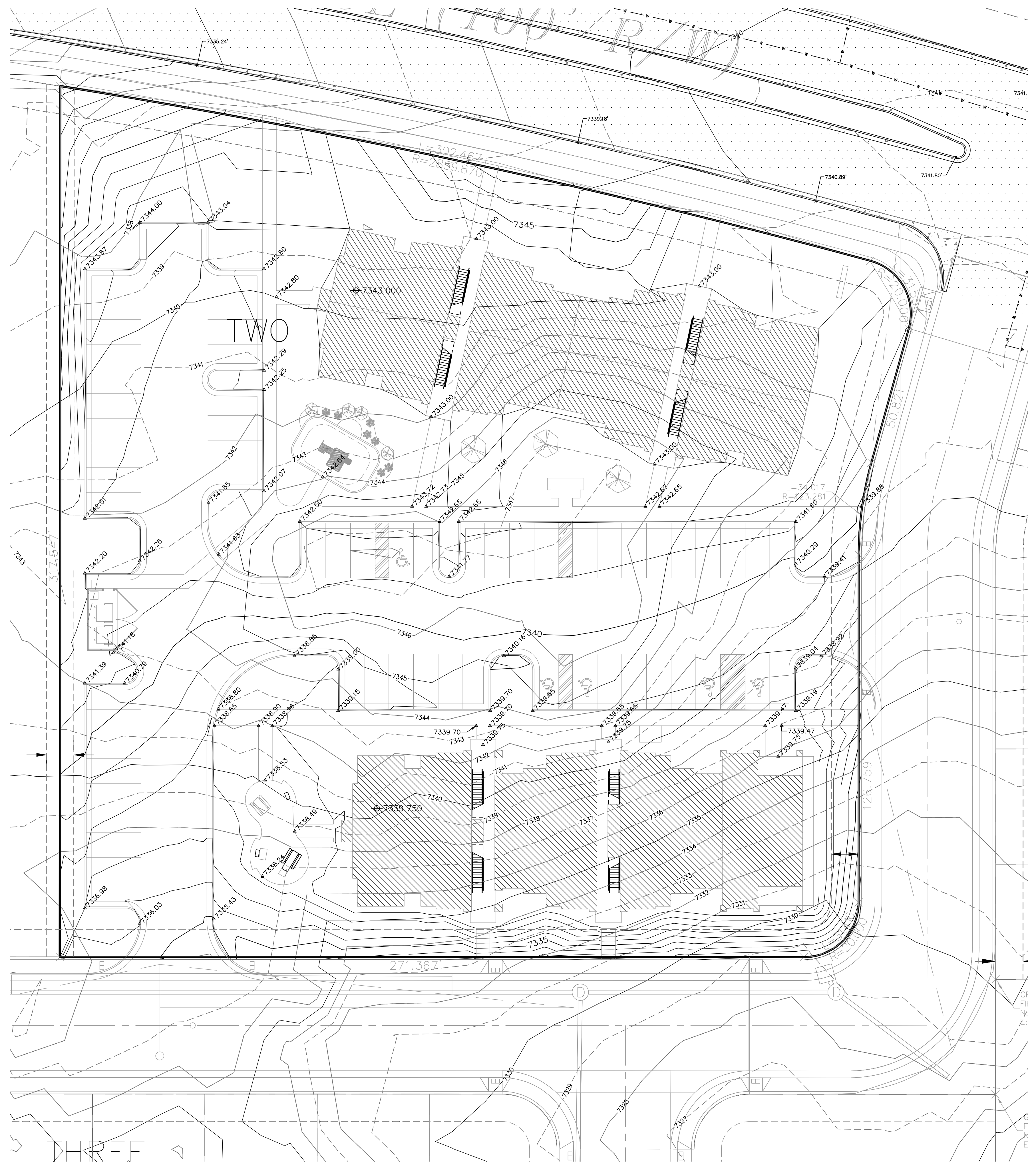
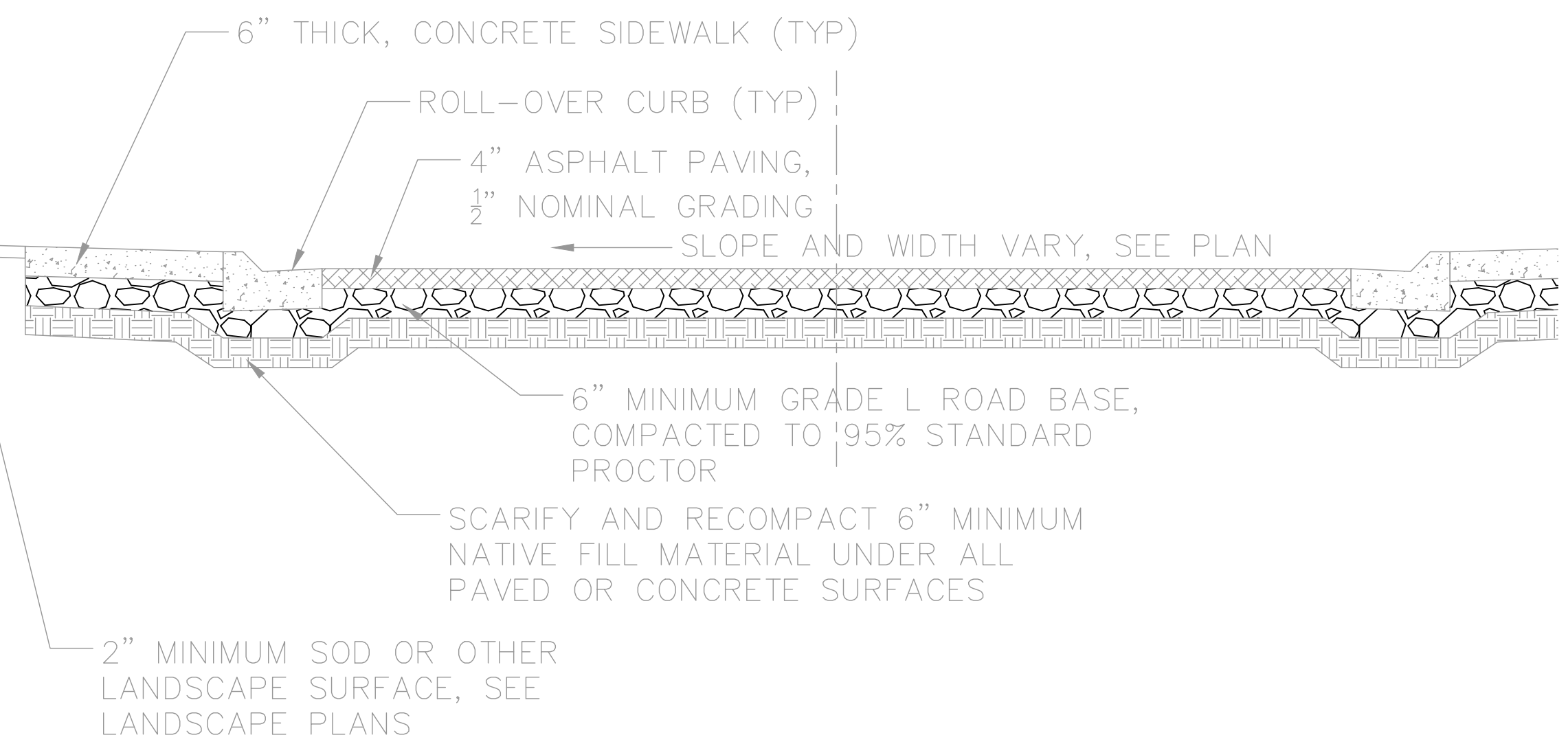
4. PARKING LOT STRIPING SHALL BE 4' WIDE STRIPES USING WHITE PAINT PER LMC 15.14.040.C.11.C **Rev 1**

Approximate Cut/Fill Quantities To bottom of sub grade	
Cut	6500 Cubic Yards
Fill	4800 Cubic Yards

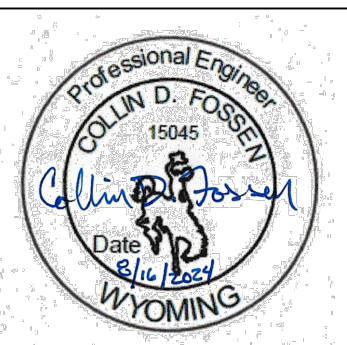
Approximate Road Base Fill Req	
Fill	1300 Cubic Yards

Approximate Asphalt Quantity	
	2950 Square Yards

TYPICAL CROSS SECTION FOR SITE SURFACING



C GRADING PLAN
1" = 20'-0"

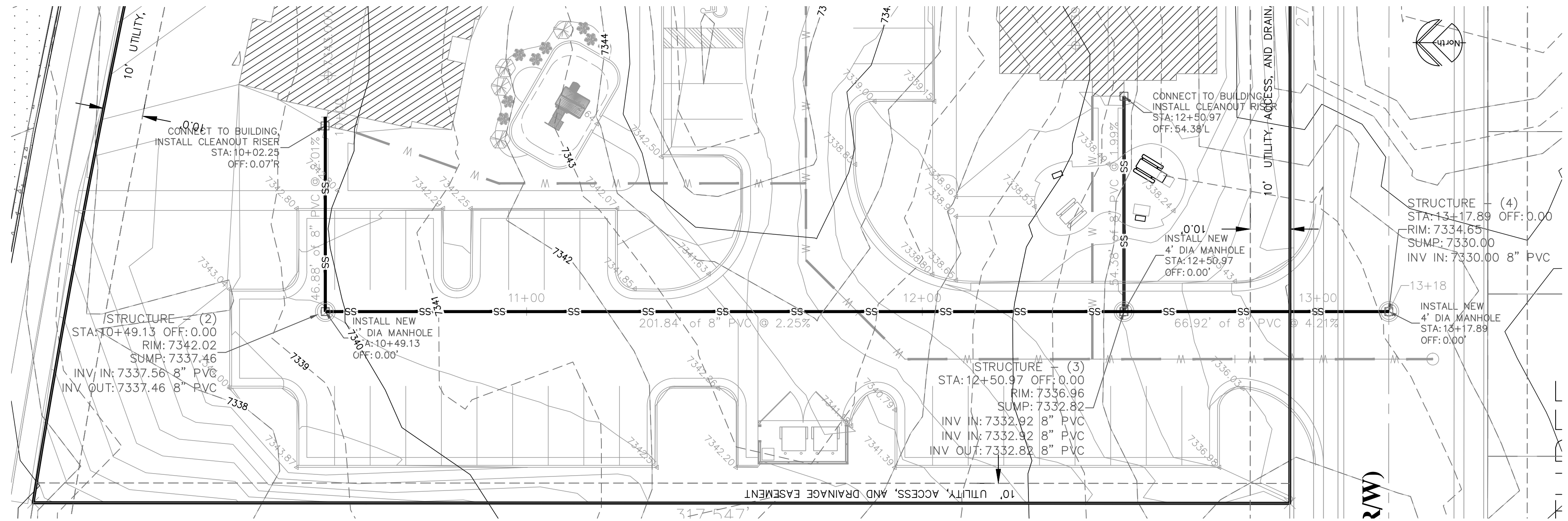


REVISION: REV-1 08-16-24

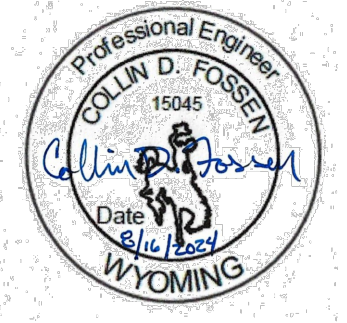
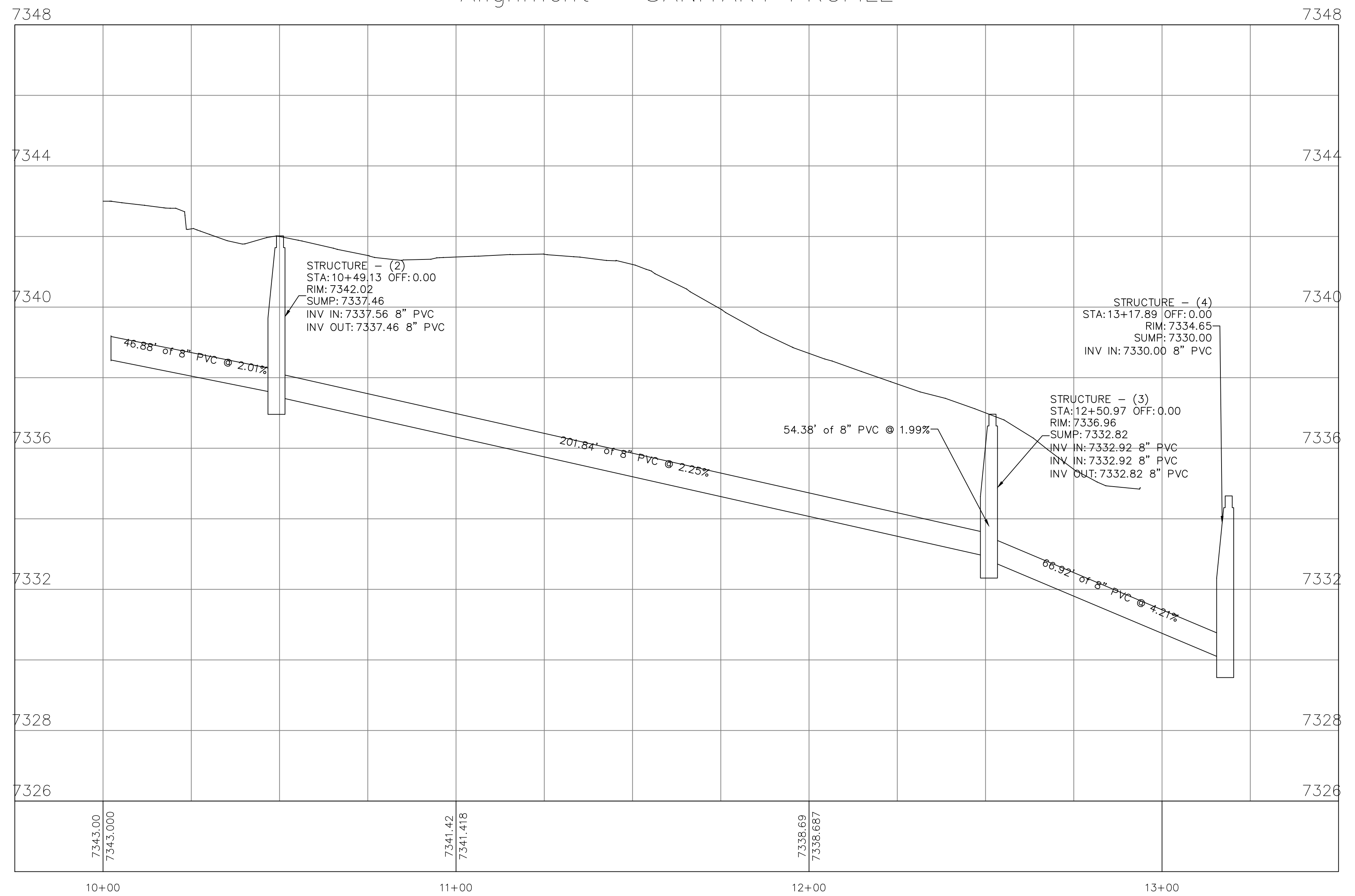
DATE: 5-23-2024
JOB: 22-3262
SHEET NO.:

C2.0

COPYRIGHTED ©

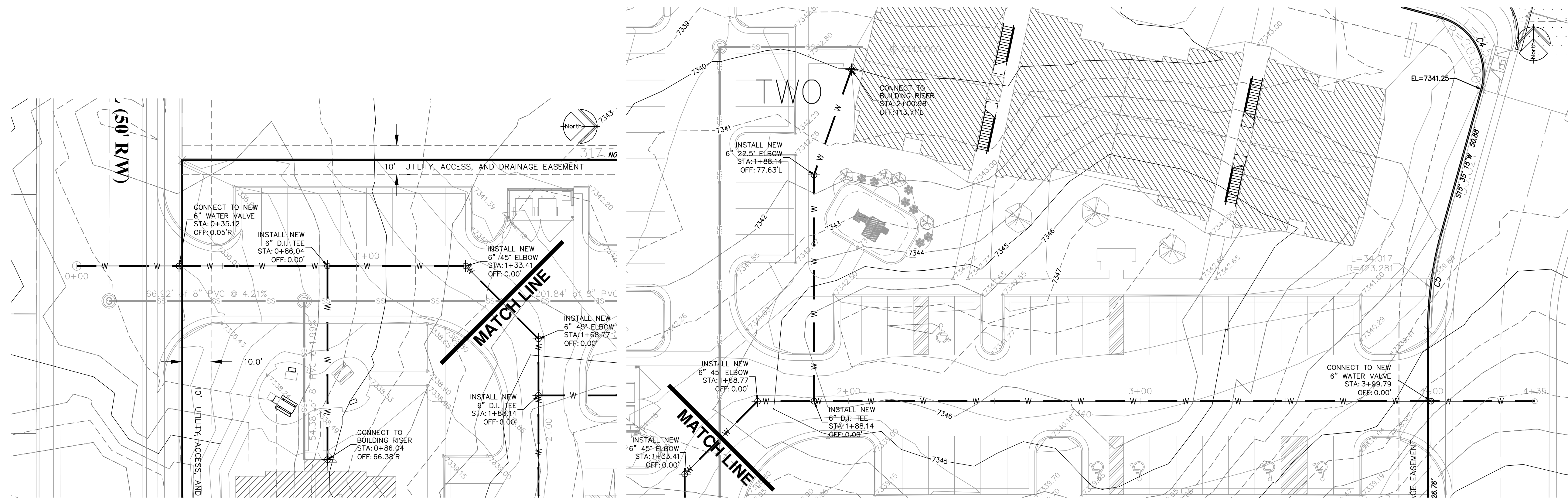


Alignment – SANITARY PROFILE

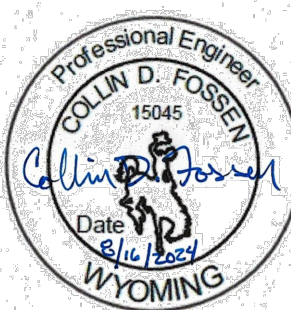
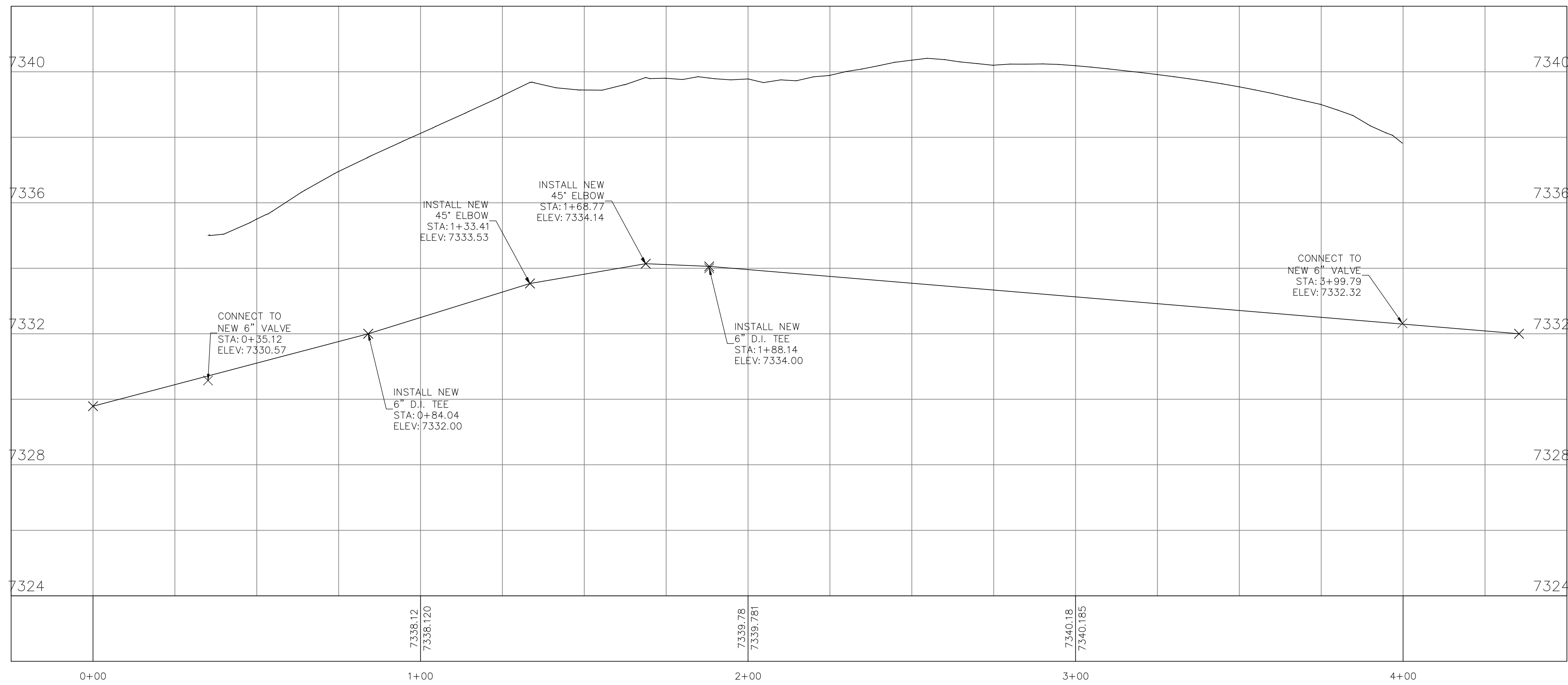


REVISION: REV-1 08-16-24

DATE: 5-23-2024
 JOB: 22-3262
 SHEET NO.:



Alignment – WATER PROFILE



REVISION: REV-1 08-16-24

DATE: 5-23-2024
 JOB: 22-3262
 SHEET NO.:

