



Jones Gillam Renz Architects

Address

730 N 9th St.
Salina, KS 67401

1881 Main St., Suite 301
Kansas City, MO 64108

Contact

jgr@jgrarchitects.com
(785) 827-0386

Web

jgrarchitects.com

ARCHITECT'S SUPPLEMENTAL INSTRUCTIONS

JONES GILLAM RENZ DOCUMENT JGR 710

PROJECT:	Lee Lofts II – Tenant Space 2 Offices Salina, Kansas	Report No.	One (1)
OWNER:	Overland Property Group Dan Maximuk 234 N. Santa Fe Ave, Suite A Salina, KS 67401	Date	Oct. 14, 2024
CONTRACTOR:	MCP Group 3501 SW Fairlawn Rd. Topeka, KS 66614	Architect's Proj No.	24-3420
		Contract For:	General Construction Mechanical, Electrical

The work shall be carried out in accordance with the following supplemental instructions issued in accordance with the Contract Documents without change in Contract Sum or Contract Time. Prior to proceeding in accordance with these instructions, indicate your acceptance of these instructions for minor change to the Work as consistent with the Contract Documents and return a copy to the Architect.

DESCRIPTION:

- 1) Contractor to make adjustments as needed and required per the modifications as indicated on attached drawings and in the below descriptions:
 - a. Sheet A2.1 – revised to show new condensing unit pad on grade, modification to mechanical closet size and door size, and electrical panel to remain in existing location.
 - b. Sheet A2.2 – revised to show modification to mechanical room size and door size and configuration.
 - c. Sheet A2.3 – revised to show modification to door #104 size and configuration.
 - d. Sheet M1.1 – revised to show condensing unit to grade, blower coil unit location and ductwork was revised for modification to mechanical closet size, and electrical panel is to remain in existing location.
 - e. Sheet M1.2 and M1.3 – revised for modification to mechanical closet size and electrical panel is to remain in existing location.
 - f. Sheet E1.1 – revised to show condensing unit to grade, modifications to mechanical closet size and show existing panel 'C2' as existing to remain.

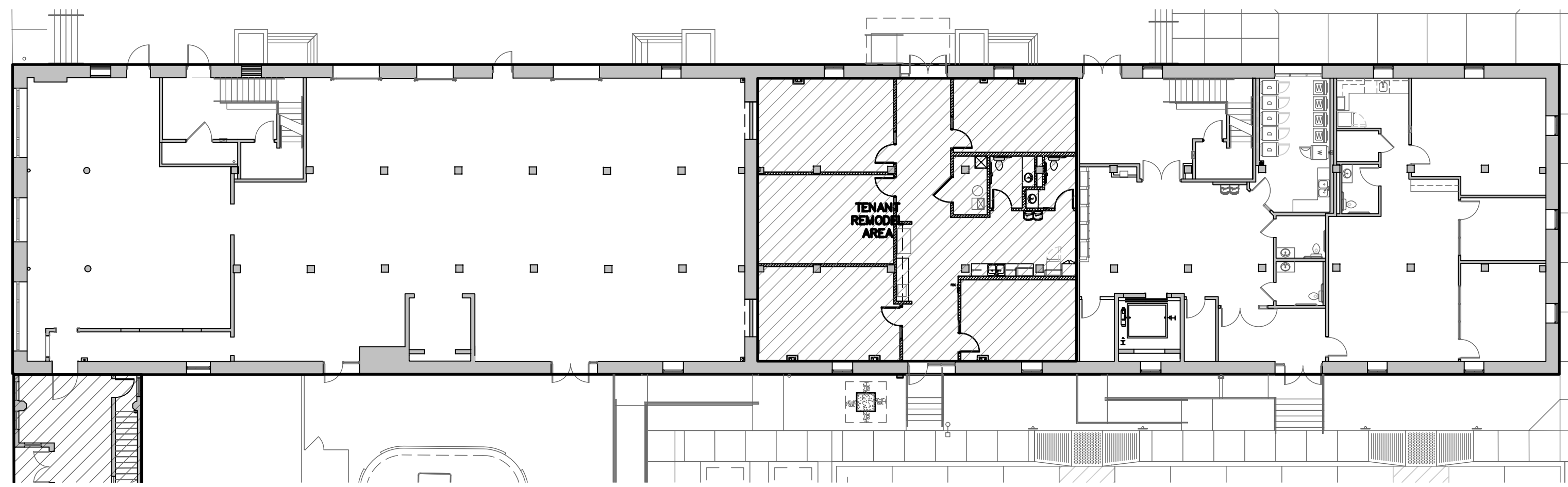
Attachments:

1. Revised Architectural Sheets A2.1, A2.2, A2.3
2. Revised MEP Sheets M1.1, M1.2, M1.3, E1.1

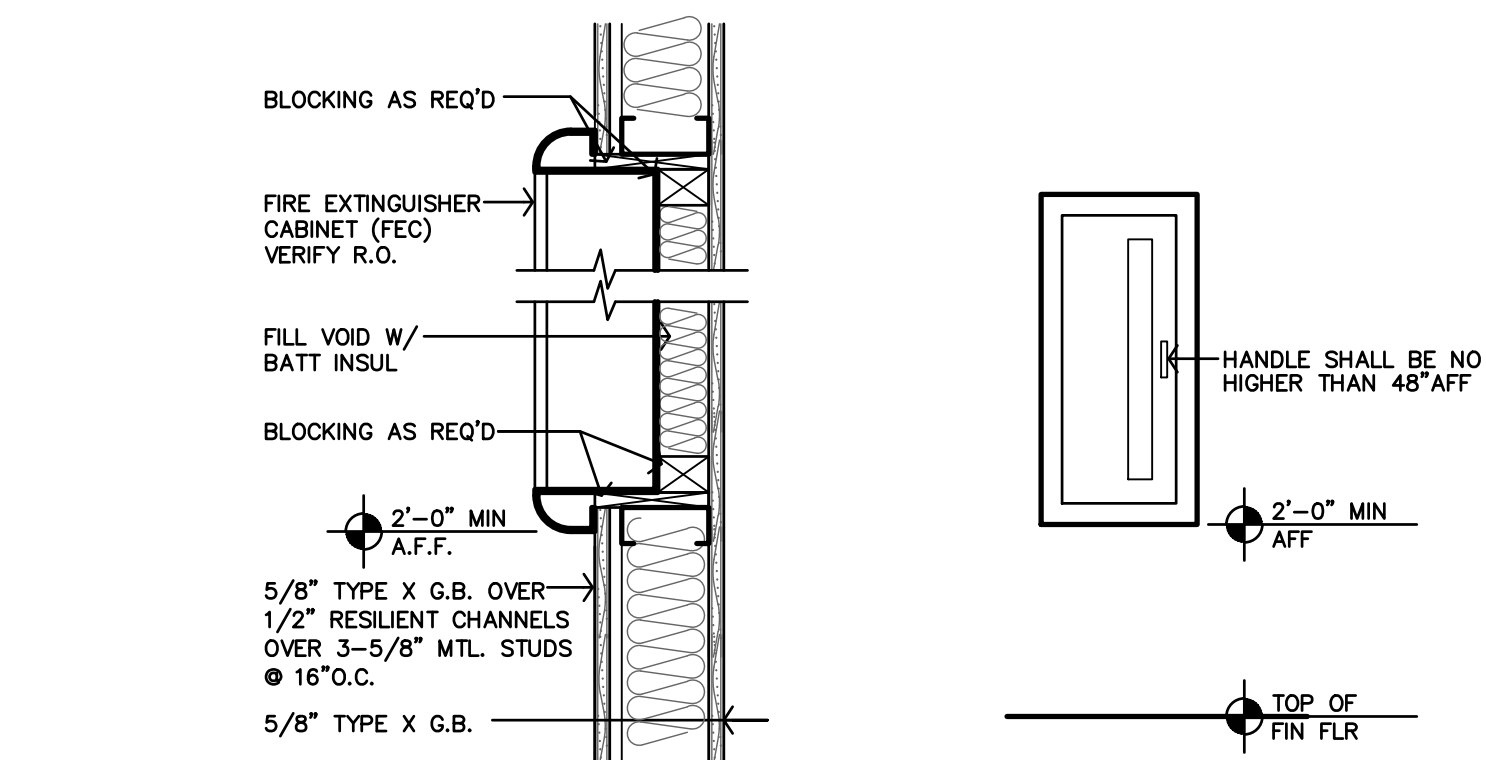
Issued by: Jones Gillam Renz Architects PO Box 2928, Salina, KS 67402
Maggie Gillam, Project Architect 785 827 0386 mgillam@jgrarchitects.com

Copies to:

MCP Group - Eric Hubener, Shawn Gillgannon, Lolan Henio
OPG - Dan Maximuk, Austin Kack
JGR Architect - Maggie Gillam
LST - Brian Ochs



B KEY PLAN
1/16"=1'-0"



D FIRE EXTINGUISHER CABINET DTL
1/2"=1'-0"

C TYPICAL FEC MOUNTING HGT
3/4"=1'-0"

PUBLIC FINISH SCHEDULE												
FINISHES & INSTRUCTIONS												
P2 EPOXY PAINT		EW ENGINEERED WOOD		RB RUBBER BASE		P1 LATEX PAINT		T CERAMIC TILE		SV SHEET VINYL		
E EXISTING		SV SHEET VINYL										
NO.	DESCRIPTION	FLOOR	BASE	N. WALL	E. WALL	S. WALL	W. WALL	CEILING	NOTES			
		ENGINEERED WOOD	SHEET VINYL	1" GYPCRETE, ACJOST MATT	WOOD BASE, PAINTED	SELF COVE RUBBER BASE	5/8" FIRE RATED G.B.	EXISTING BRICK/MASONRY CERAMIC TILE WANSOCOT	5/8" FIRE RATED G.B.	EXISTING BRICK/MASONRY CERAMIC TILE WANSOCOT	5/8" FIRE RATED G.B.	EXISTING BRICK/MASONRY CERAMIC TILE WANSOCOT
101	OFFICE 1	EW			P1	P1	P1	P1	P1			2, 3
102	OFFICE 2	EW			P1	P1	P1	P1	P1			2, 3
103	HALL	EW			P1	P1	P1	P1	P1			2, 3
104	OFFICE 3	EW			P1	P1	P1	P1	P1			3
106	WORK AREA	EW			P1	P1	P1	P1	P1			3
107	OFFICE 4	EW			P1	P1	P1	P1	P1			2, 3
108	HALL	EW			P1	P1	P1	P1	P1			2, 3
109	OFFICE 5	EW			P1	P1	P1	P1	P1			2, 3
111	KITCHENETTE	EW			P1	T	P2	P2	P1			3
112	MEN RESTROOM	T		T	P2	T	P2	T	P1			3
113	WOMEN RESTROOM	T		T	P2	T	P2	T	P1			3
114	MECHANICAL	SV			P2	P2	P2	P2	P1			1, 3

FINISH SCHEDULE NOTES

GENERAL NOTES:

- INSTALL VINYL, RUBBER, OR ALUMINUM TRANSITION STRIP BETWEEN FLOOR MATERIAL OF DIFFERING HEIGHTS, INCLUDING BUT NOT LIMITED TO WOOD FLOORING/SHEET VINYL TRANSITIONS.
- ALL GYPSUM BOARD AREAS WHICH ARE ACCESSORIES TO THE ROOM INCLUDING BUT NOT LIMITED TO SOFFITS, BULKHEADS, TRIM, ETC. SHALL BE PAINTED REGARDLESS OF WHETHER IT IS SPECIFICALLY INDICATED PER SCHEDULE.
- ALL G.B. WALLS & PERMANENT PARTITIONS SHALL RECEIVE WOOD BASE UNLESS NOTED OTHERWISE.
- WALL TYPE SHOWN FOR GENERAL INFORMATION ONLY. CONTRACTOR SHALL COORDINATE WALL MATERIAL W/ DRAWINGS AND FIELD CONDITIONS. ALL AREAS INDICATED TO RECEIVE NEW FINISH SHALL RECEIVE COMPLETE FINISH AS SCHEDULED AT ENTIRE ROOM. CONTRACTOR SHALL COORDINATE FINISHES AND AGENTS WITH DETAILS AND INTERIOR ELEVATIONS.
- FLOORING CONTRACTOR SHALL VERIFY THAT SUBFLOOR IS LEVEL AND PROPERLY PREPPED, PRIOR TO INSTALLATION OF ANY FLOORING MATERIALS.
- CONTRACTOR SHALL VERIFY THAT FLOORS ARE PREPPED/FLOORSTONED FOR LEVEL TRANSITION BETWEEN DIFFERING MATERIALS.
- INSTALL PAINTABLE SILICONE SEALANT AT ALL G.B. TO MASONRY/CONCRETE WALL TRANSITIONS.
- ALL H.M. FRAMES TO BE PAINTED W/ INDUSTRIAL ENAMEL UNLESS NOTED OTHERWISE. H.M. FRAMES SHALL BE SANDED SMOOTH PRIOR TO PAINTING. SPRAY FINISH ONLY. NO BRUSH FINISH.
- CONTRACTOR SHALL COORDINATE WITH INTERIOR ELEVATIONS, FLOOR PLANS AND MISCELLANEOUS DETAILS TO VERIFY ALL AESTHETIC ACCENTS AND DETAILS.
- REFERENCE INTERIOR ELEVATIONS, WALL SECTIONS AND DETAILS FOR WOOD BASE AND TRIM LOCATIONS.
- INTERIOR BRICK WALLS: EXISTING LINEMASH FINISH TO REMAIN. PROTECT DURING CONSTRUCTION.
- WOOD STRUCTURE, COLUMNS, BEAMS, FLOOR JOIST & EXPOSED FLOOR/CEILING DECKING CLEAN & PREPARE FOR PAINT.
- LEVEL 4 FINISH WITH ORANGE PEEL TEXTURE AT ALL WALLS & GYP CEILINGS.
- CERAMIC WALL TILE BEHIND DRINKING FOUNTAINS. REFERENCE INTERIOR ELEVATIONS.
- FLOORS - CLEAN, REPAIR & PREPARE FOR 1/8" ACOUSTICAL MATT & 7/8" GYPCRETE OR DURA-CAP, AS SPECIFIED.

SPECIFIC NOTES:

- INSTALL FRP PANEL TO 4'-0" ABOVE MOP SINK & EXTEND 1'-0" MINIMUM BEYOND EDGES OF SINK; CLASS "A" FIRE RESISTIVE MATERIAL.
- EXISTING BRICK WALLS, LIME-WASH EXISTING FINISH. CLEAN, FREE OF ALL LOOSE DEBRIS AND DUST. LIME-WASH FINISH TO BE RETAINED, PROTECT DURING CONSTRUCTION.
- PAINT CEILING TO 2" BELOW LOWEST JOIST/BEAM. INCLUDE THE CEILING DECK, JOISTS, BEAMS AND ANY EXPOSED UTILITIES INCLUDING CONDUIT, J-BOXES, SPRINKLER PIPING, PLUMBING PIPING, ETC. (EXCEPT FOR SPIRAL DUCTWORK).

FINISH NOTES

- BRICK, EXISTING LIME-WASHED WALLS: TO BE RETAINED/PROTECTED.
- EXISTING WOOD FLOORS JOISTS (ABOVE, CEILING), BEAMS (ABOVE, CEILING), COLUMNS, ETC.: MEDIA BLAST, CLEAN, AND REPAIR AS NEEDED, TO BE PAINTED.
- PAINT CEILING TO 2" BELOW LOWEST JOIST/BEAM. INCLUDE THE CEILING DECK, JOISTS, BEAMS AND ANY EXPOSED UTILITIES INCLUDING CONDUIT, J-BOXES, SPRINKLER PIPING, PLUMBING PIPES & DRAINS, ETC. (EXCEPT FOR DUCTWORK).
- PAINT COLOR SELECTIONS:
- WALLS: BENJAMIN MOORE, ASHWOOD OC-47 (EXCEPT AT RESTROOMS, SEE SHEET A2.2)
- DOORS, FRAMES/CASINGS, TRIM, BASE: BENJAMIN MOORE, NIGHTFALL 1596
- CEILINGS, JOISTS, PIPES, ETC: BENJAMIN MOORE, NIGHTFALL 1596
- FLOOR FINISHES SHALL FOLLOW THESE GUIDELINES (REFERENCE FLOOR PLAN)
- ALL PUBLIC AREAS, COMMERCIAL AREAS AND OTHER "FRONT OF HOUSE" AREAS SHALL BE ENGINEERED WOOD TO MATCH THE REST OF THE BUILDING.
- ALL UTILITY SPACES, STORAGE SPACES, RESTROOMS, COMMERCIAL KITCHENS AND ACCESSORY-USE AREAS SHALL BE EITHER TILE, SHEET VINYL, VINYL TILE OR OTHER AS SPECIFIED.

FLOORING LEGEND

- SV: NEW SHEET VINYL (TEKNOFLOR, URBANSCAPES HPD, SOHO 88077) WITH 4" RUBBER BASE (TARKETT 55 SILVER GRAY)
- EW: NEW ENGINEERED WOOD FLOORING (3-1/4" RED OAK FROM NORTHLAND COLLECTION, COLOR: COPPER)
- TILE: NEW FLOOR TILE (DAL-TILE, PORTFOLIO, ASH GRAY PF05, SIZE: 12x24, PATTERN: 1/3 LAY, PARALLEL TO DOOR WITH MAPEI GROUT: 107 IRON)

GENERAL NOTES

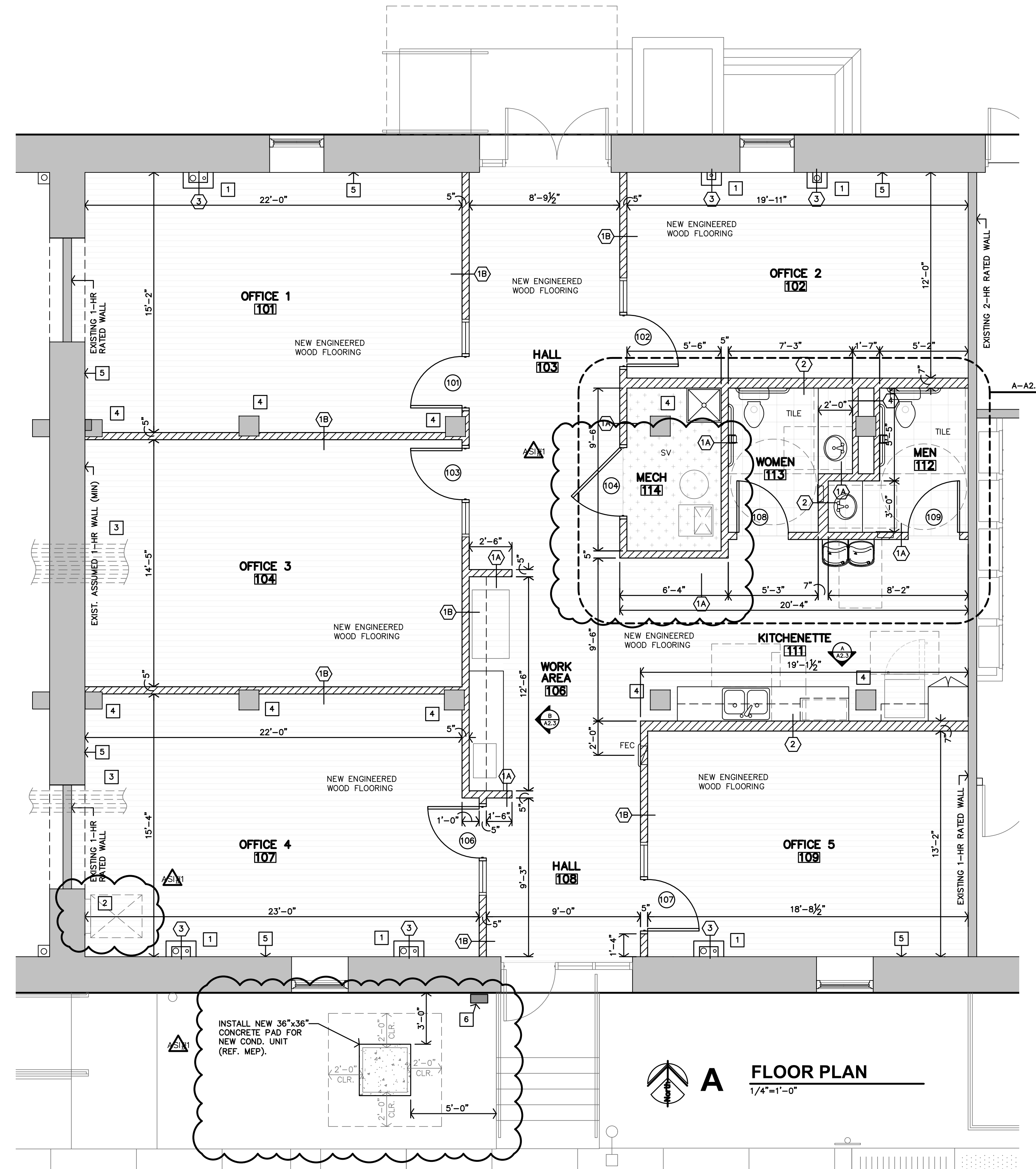
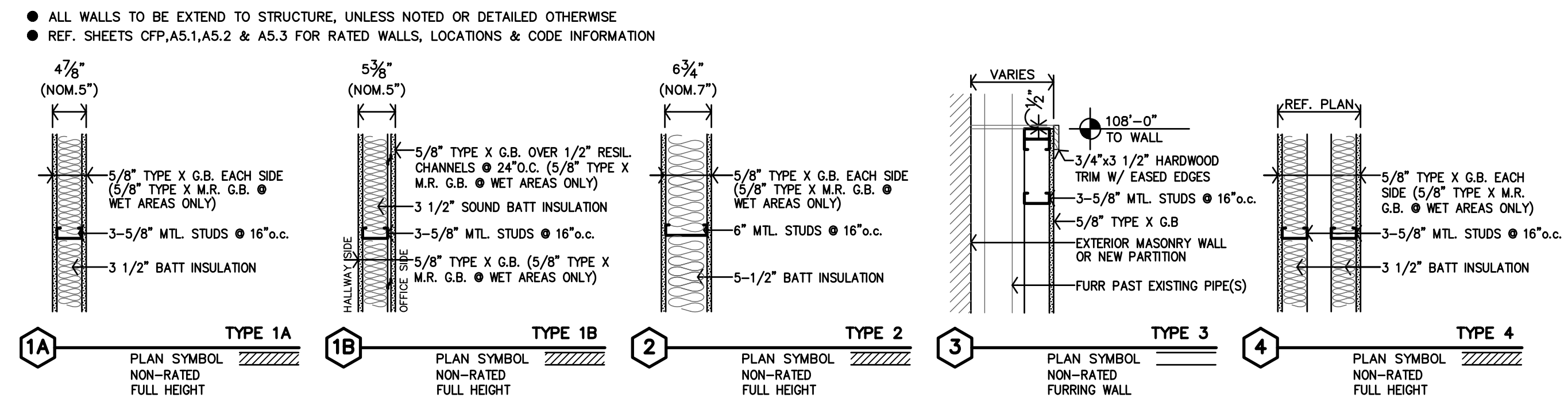
- CONTRACTOR SHALL FIELD VERIFY ALL DIMENSIONS & CONDITIONS.
- IF THERE IS A DISCREPANCY BETWEEN DRAWINGS AND FIELD CONDITIONS NOTIFY ARCHITECT PRIOR TO PROCEEDING WITH WORK SO THAT ANY ISSUES MAY BE CLARIFIED.
- ALL WORK SHALL BE IN CONFORMANCE W/ APPLICABLE BUILDING CODES & ORDINANCES.
- MODIFY EXISTING FIRE SPRINKLER SYSTEM AND HEAD LOCATION AS NEEDED TO ACCOMMODATE NEW TENANT SPACE LAYOUT AND WALL LOCATIONS.
- ANY AND ALL OPENINGS, HOLES AND PENETRATIONS THROUGH THE WEST OR EAST FIRE WALLS, MUST BE SEALED APPROPRIATELY WITH FIRE FOAM, FIRE CAULKING AND/OR GYP BOARD ON BOTH SIDES TO ENSURE THE SYSTEM MEETS THE 1-HR FIRE-RATING.
- ALL NEW CONSTRUCTION SHALL BE IN CONFORMANCE TO ADA REQUIREMENTS. REFERENCE ADA FOR TYPICAL MINIMUM CLEARANCE REQ'D.
- CEILINGS TO REMAIN OPEN TO STRUCTURE, SIMILAR TO ADJACENT COMMERCIAL AND RESIDENT SPACES. CEILING AND ALL PIPES, CONDUIT, ETC. TO BE PAINTED.
- INSTALL MATERIALS AND/OR FINISHES AS INDICATED, IMPLIED OR AS REQUIRED FOR COMPLETE & FINISHED INSTALLATION.
- FEC - INDICATES LOCATION OF RECESSED FIRE EXTINGUISHER CABINET. REF SPECS. AND DETAILS ON THIS SHEET.
- DIMENSIONS TO NEW INTERIOR WALLS ARE TO THE FACE OF G.B. U.N.O.
- DIMENSIONS TO EXISTING WALLS ARE TO THE FACE OF EXISTING BRICK U.N.O.

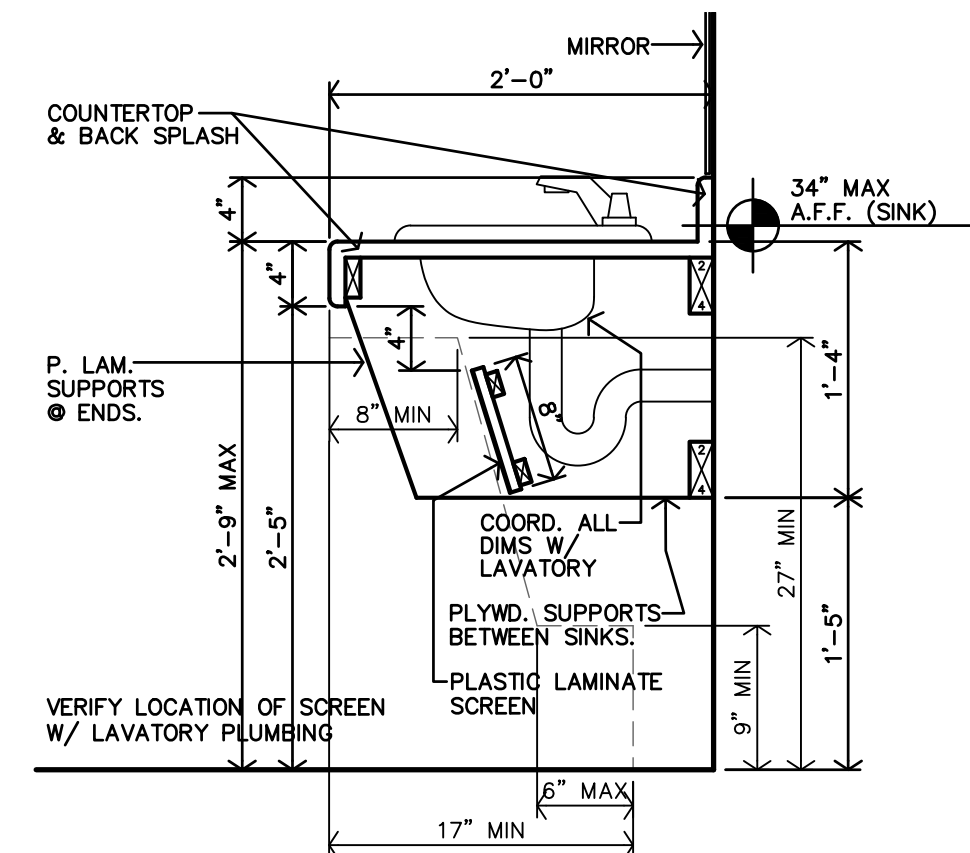
SPECIFIC NOTES:

- FURR TIGHT AROUND EXISTING PIPES WITH PARTITION TYPE 3 WALLS. TOP OF WALL TO BE 8'-0" A.F.F. EXPOSED TO BE PAINTED-OTHER PARTITIONS TO BE FURRED.
- EXISTING ELECTRICAL PANEL TO REMAIN. PROTECT DURING CONSTRUCTION.
- EXISTING CONDENSING PIPES OPEN PENETRATION THROUGH FIRE WALLS. SEAL USING 1 LAYER TYPE X G.B. (BOTH SIDES) AND FILL INTERIOR WITH UL-LISTED FIRE FOAM/FIRE CAULKING. WALL MUST MAINTAIN A MIN. 1-HR FIRE RATING.
- ALL EXPOSED WOOD COLUMNS TO BE PAINTED.
- EXTERIOR BRICK WALLS HAVE EXISTING WHITE WASH/LIME-WASH FINISH ON WALLS. WALL MUST BE RETAINED/PROTECTED DURING CONSTRUCTION.
- FIRE DEPARTMENT EMERGENCY KEY BOX (KNOXBOX OR EQUIV.) FOR ACCESS TO THIS TENANT SPACE ONLY. COORDINATE TYPE & LOCATION WITH LOCAL FIRE MARSHAL/DEPARTMENT.

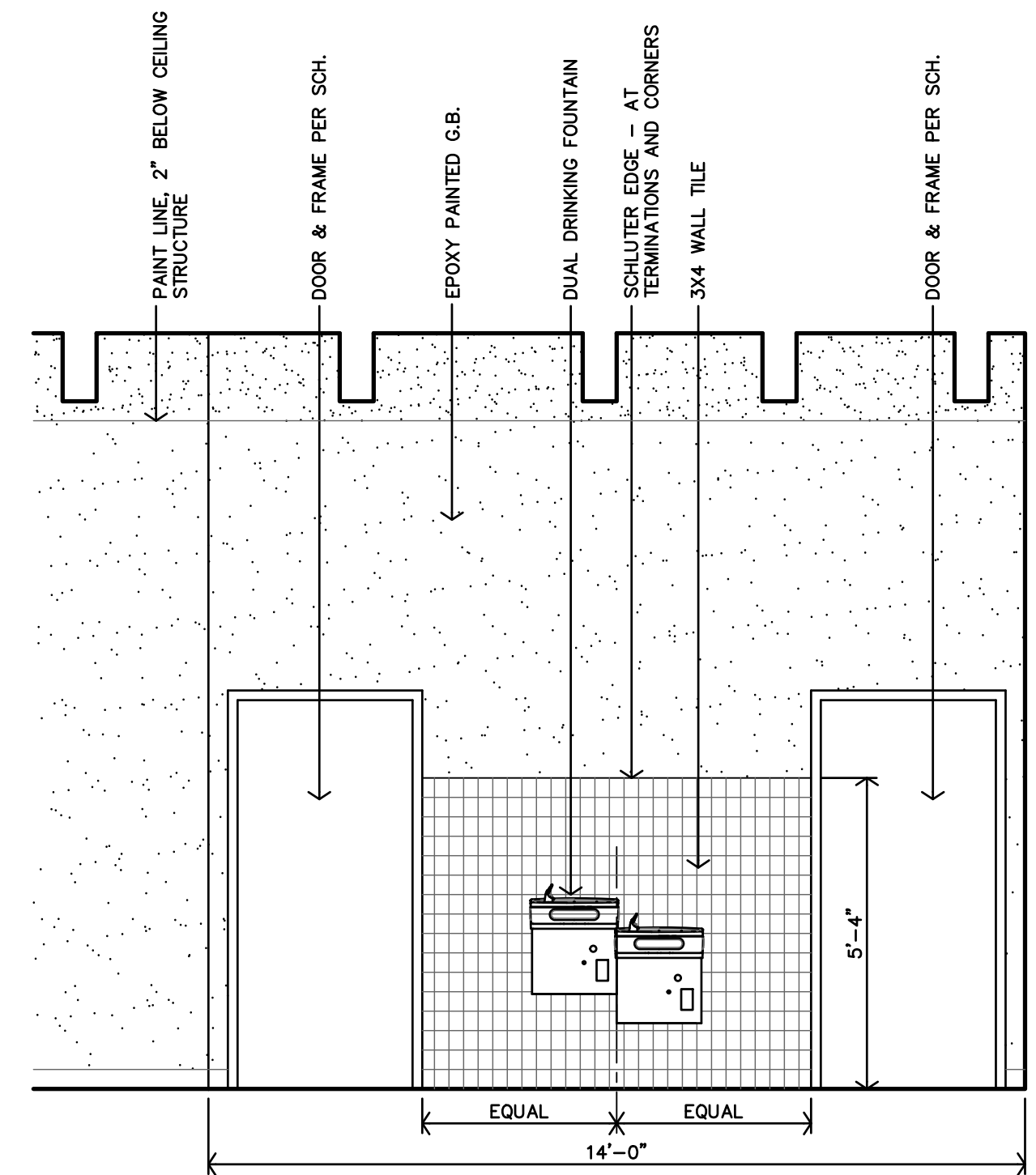
NOTE: UNLESS SPECIFIED OR NOTED DIRECTLY IN THIS SET, CONTRACTOR SHALL REFERENCE SPECIFICATIONS FROM THE LEE LOFTS BUILDING 2 PHASE II PROJECT.

INTERIOR PARTITION SCHEDULE

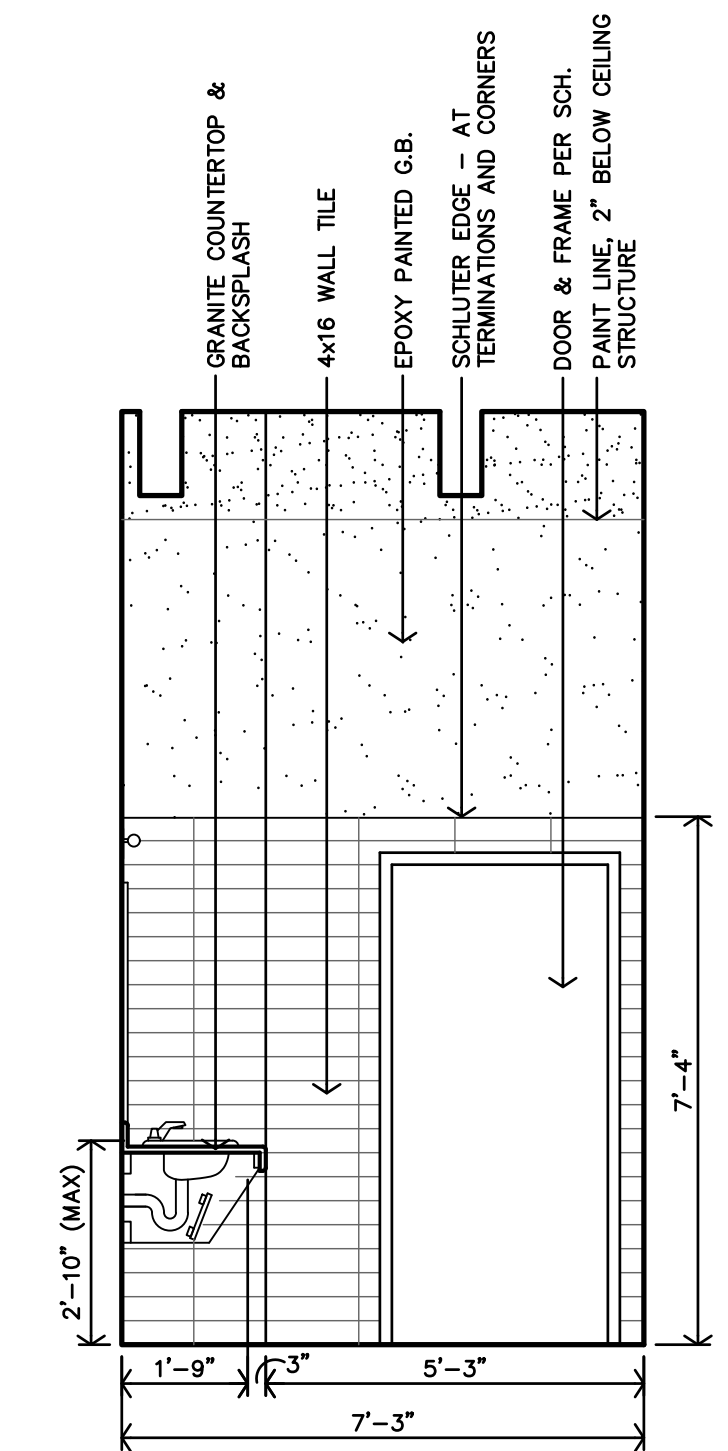




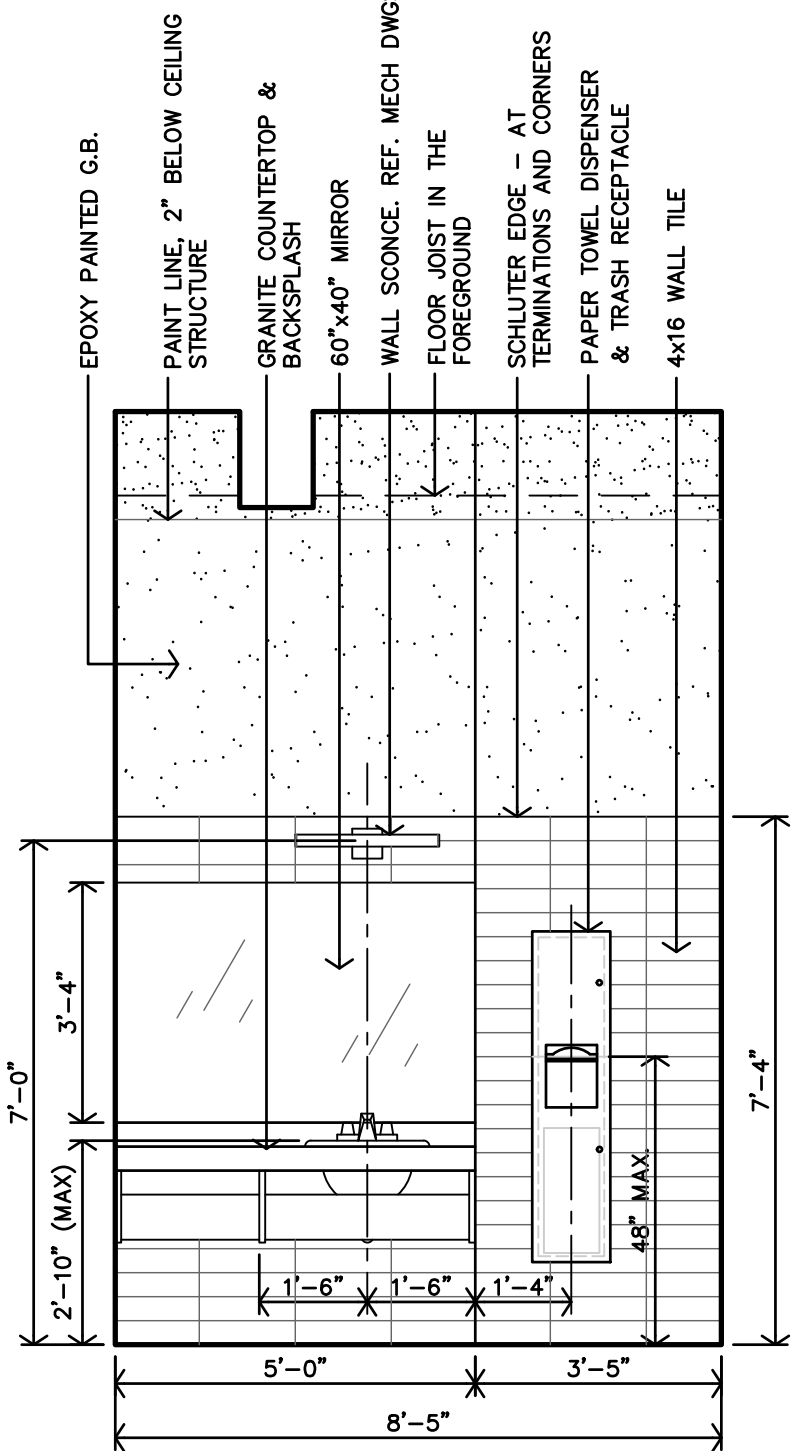
R ACCESSIBLE VANITY DETAIL
1'-1"-0"



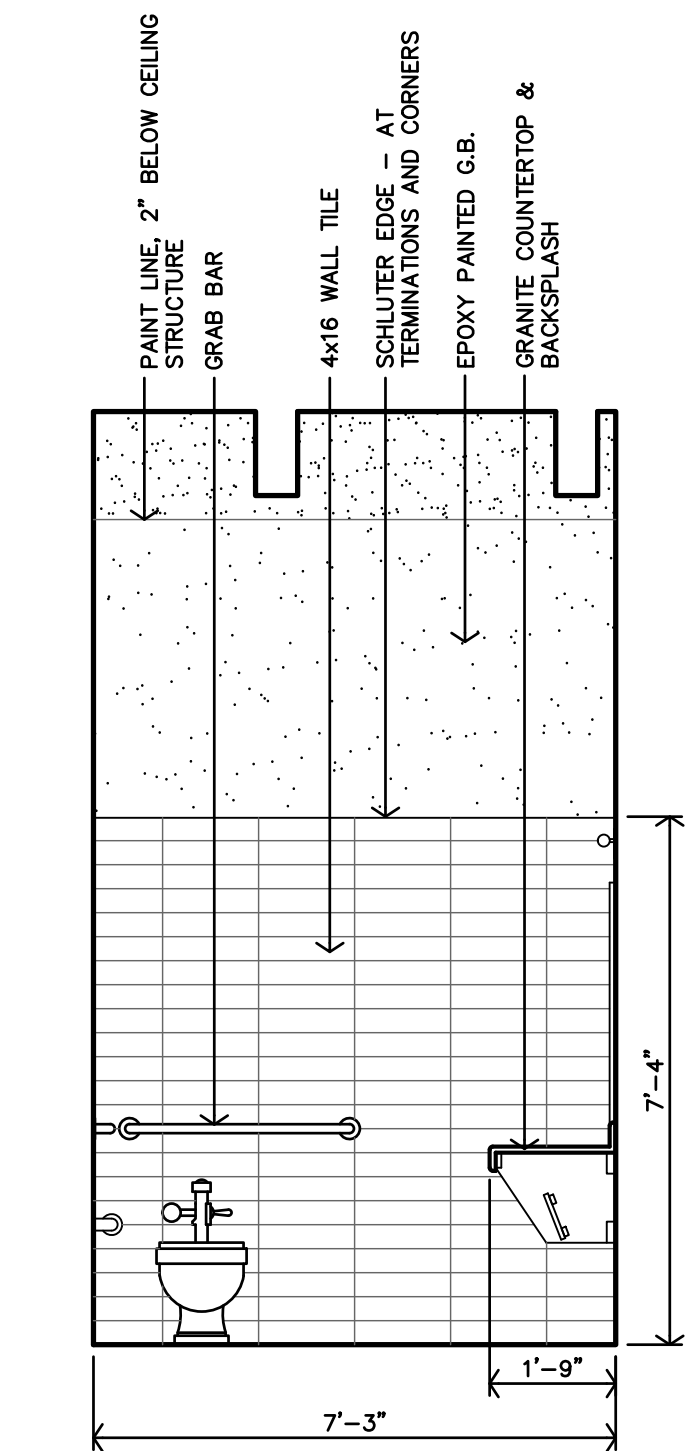
K DRINKING FOUNTAIN INTERIOR ELEVATION
3/8"-1'-0"



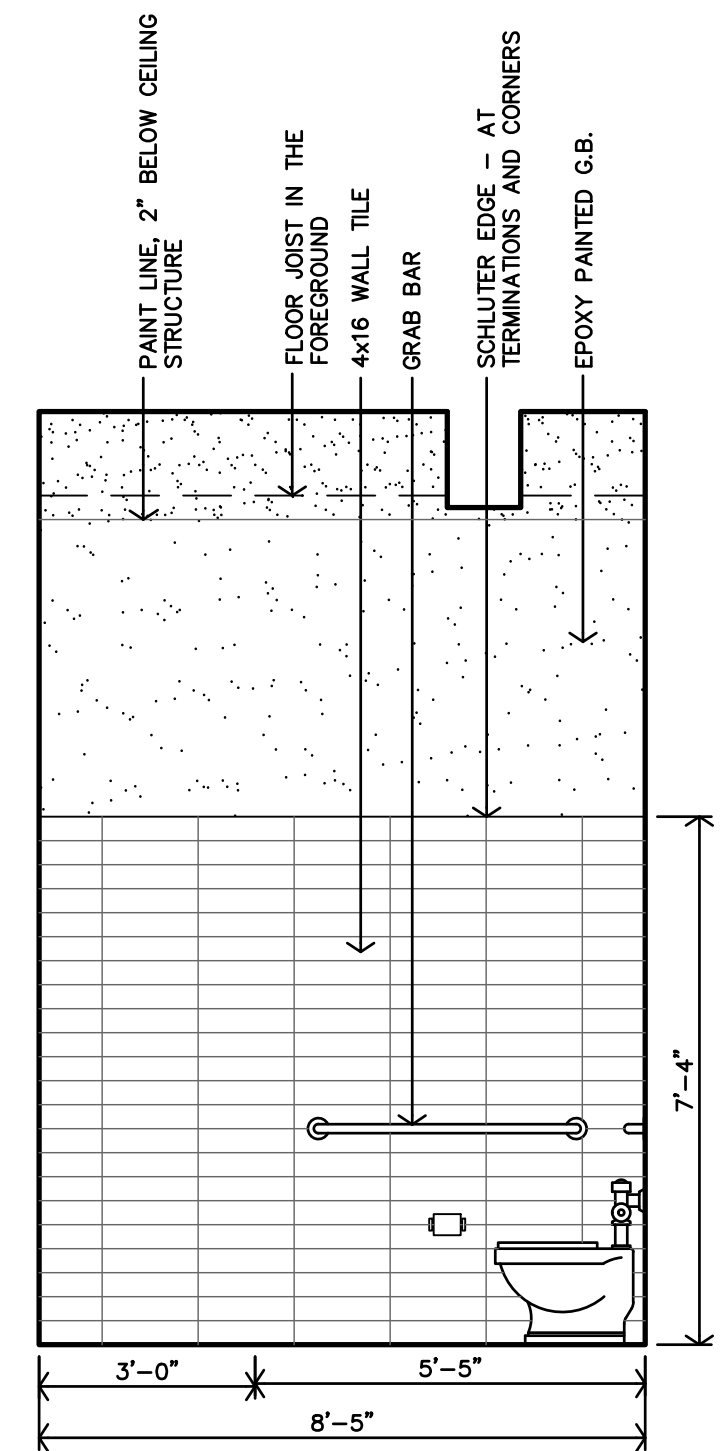
J WOMEN #113 INTERIOR ELEVATION
3/8"-1'-0"



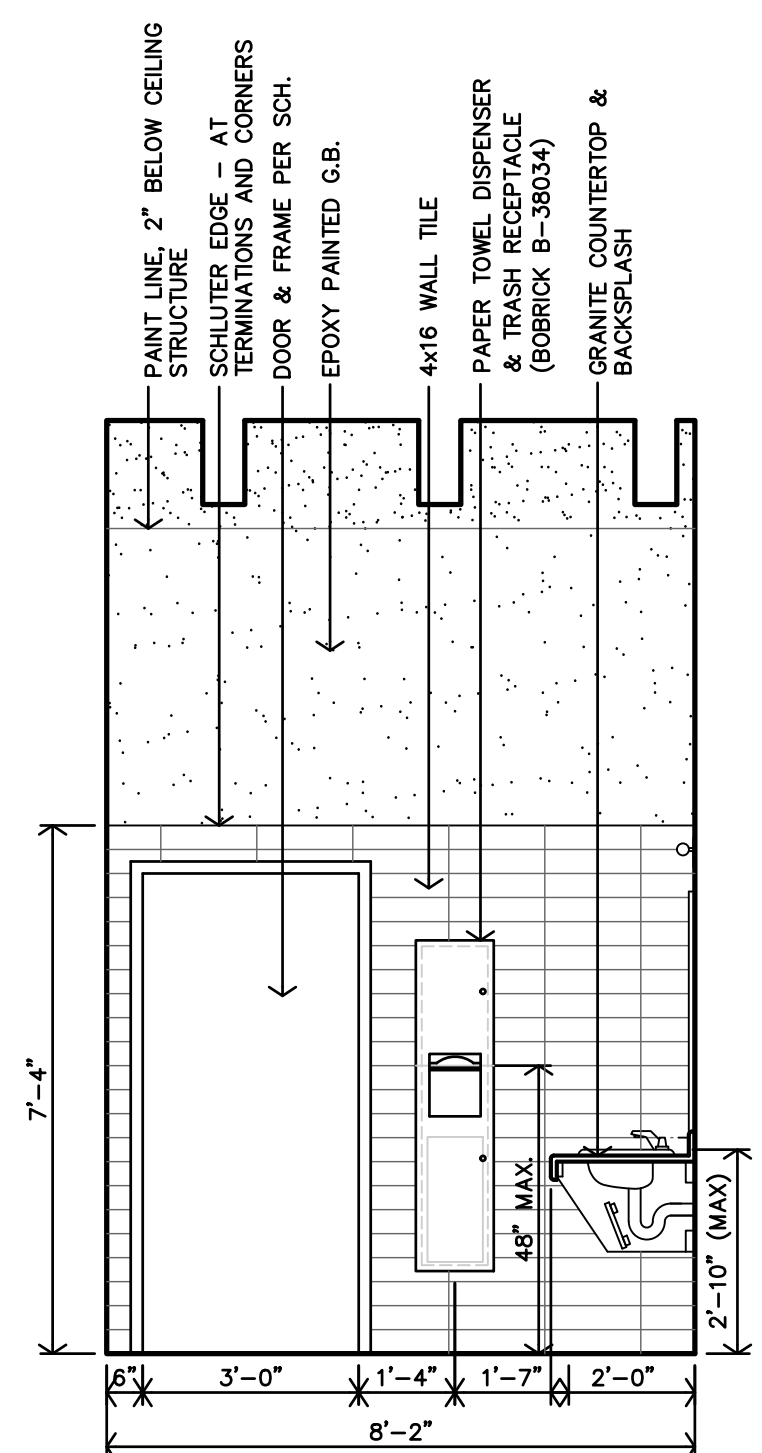
H WOMEN #113 INTERIOR ELEVATION
3/8"-1'-0"



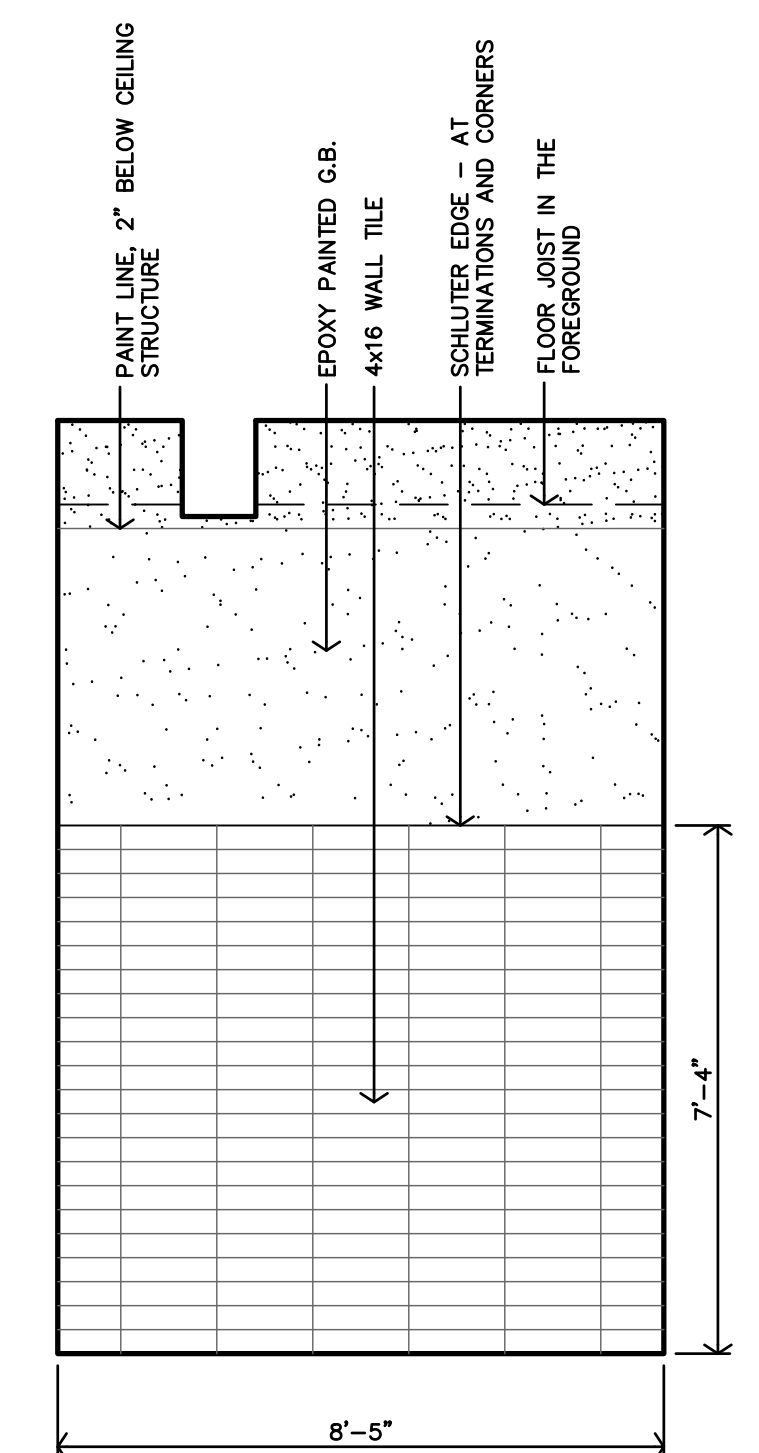
G WOMEN #113 INTERIOR ELEVATION
3/8"-1'-0"



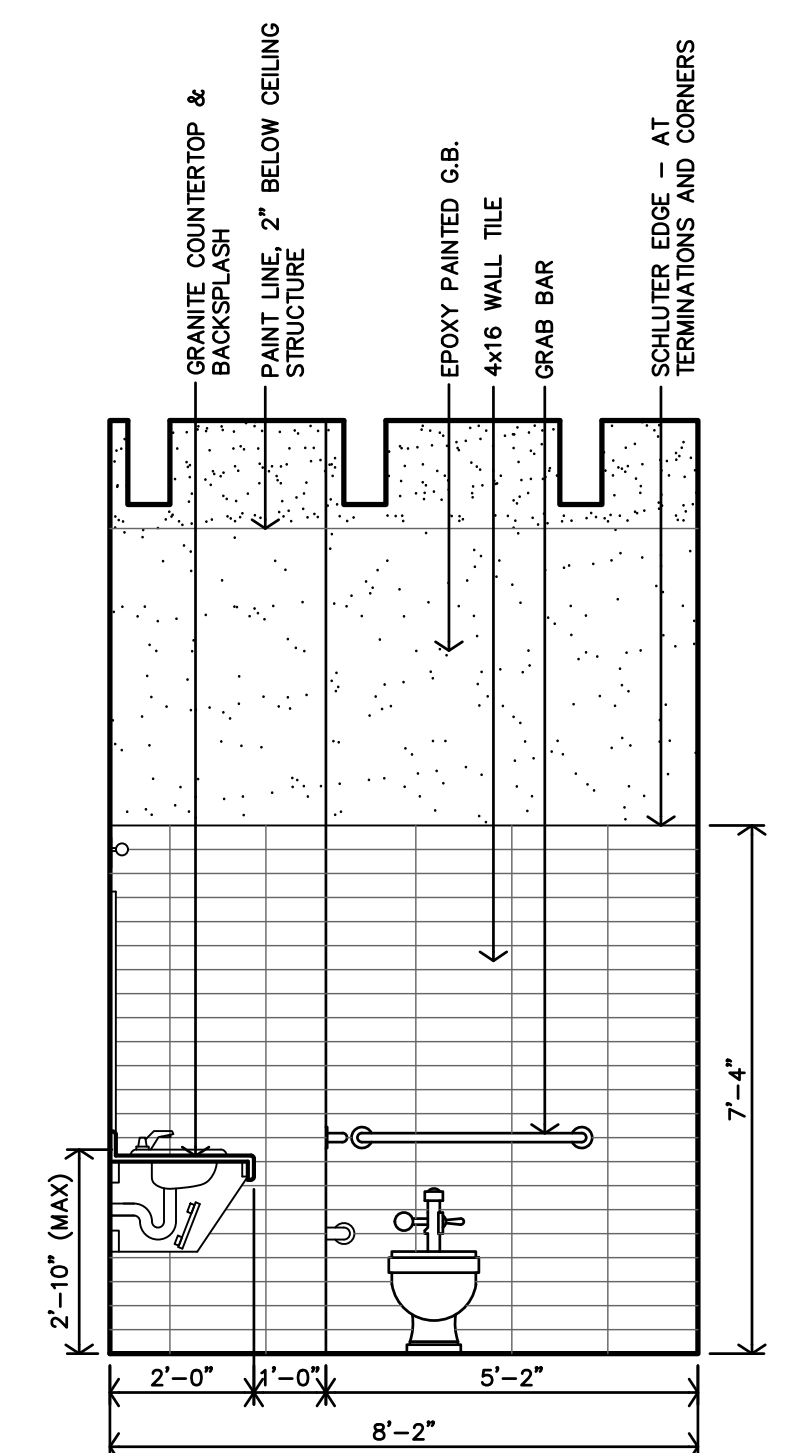
F WOMEN #113 INTERIOR ELEVATION
3/8"-1'-0"



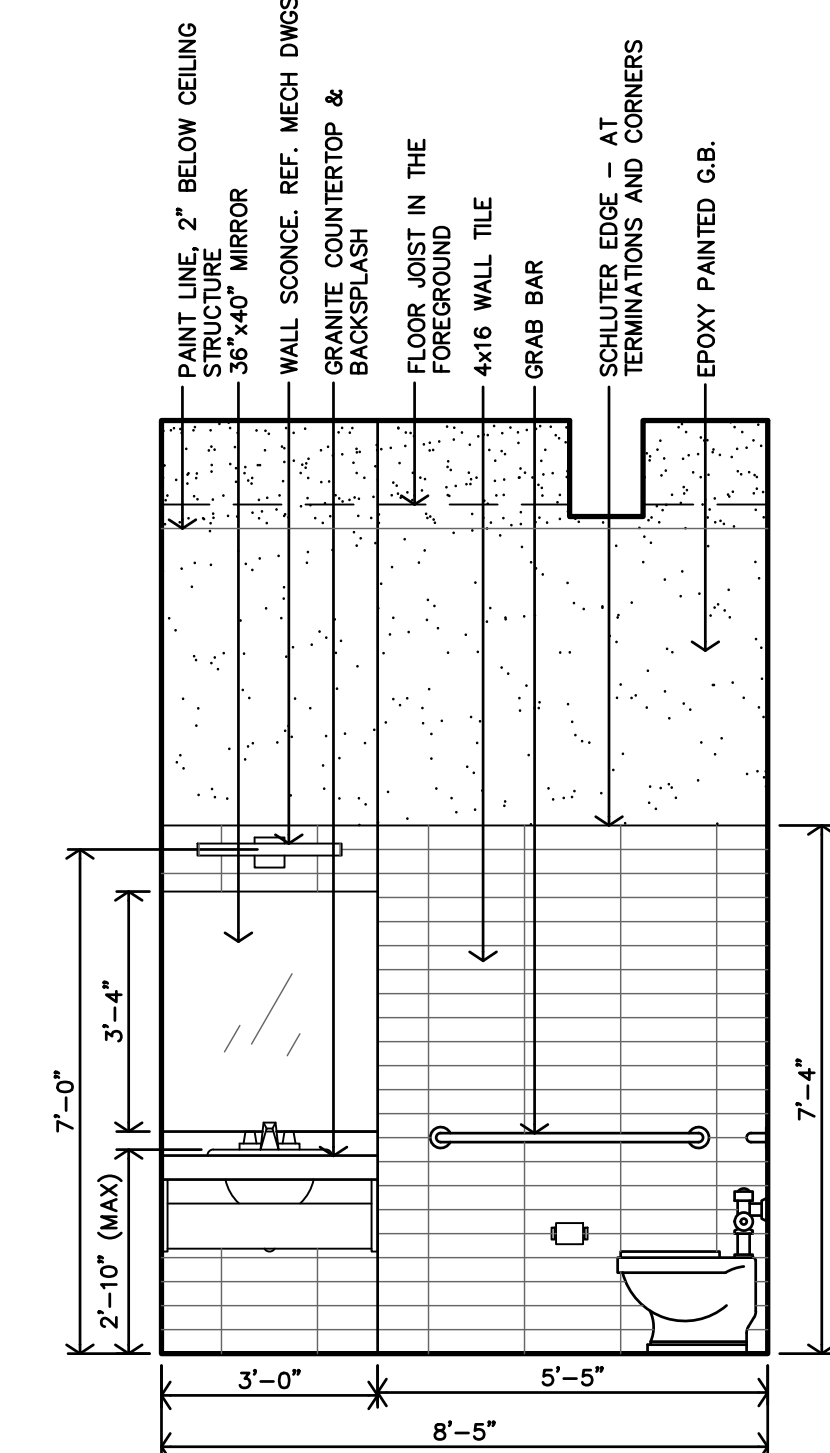
E MEN #112 INTERIOR ELEVATION
3/8"-1'-0"



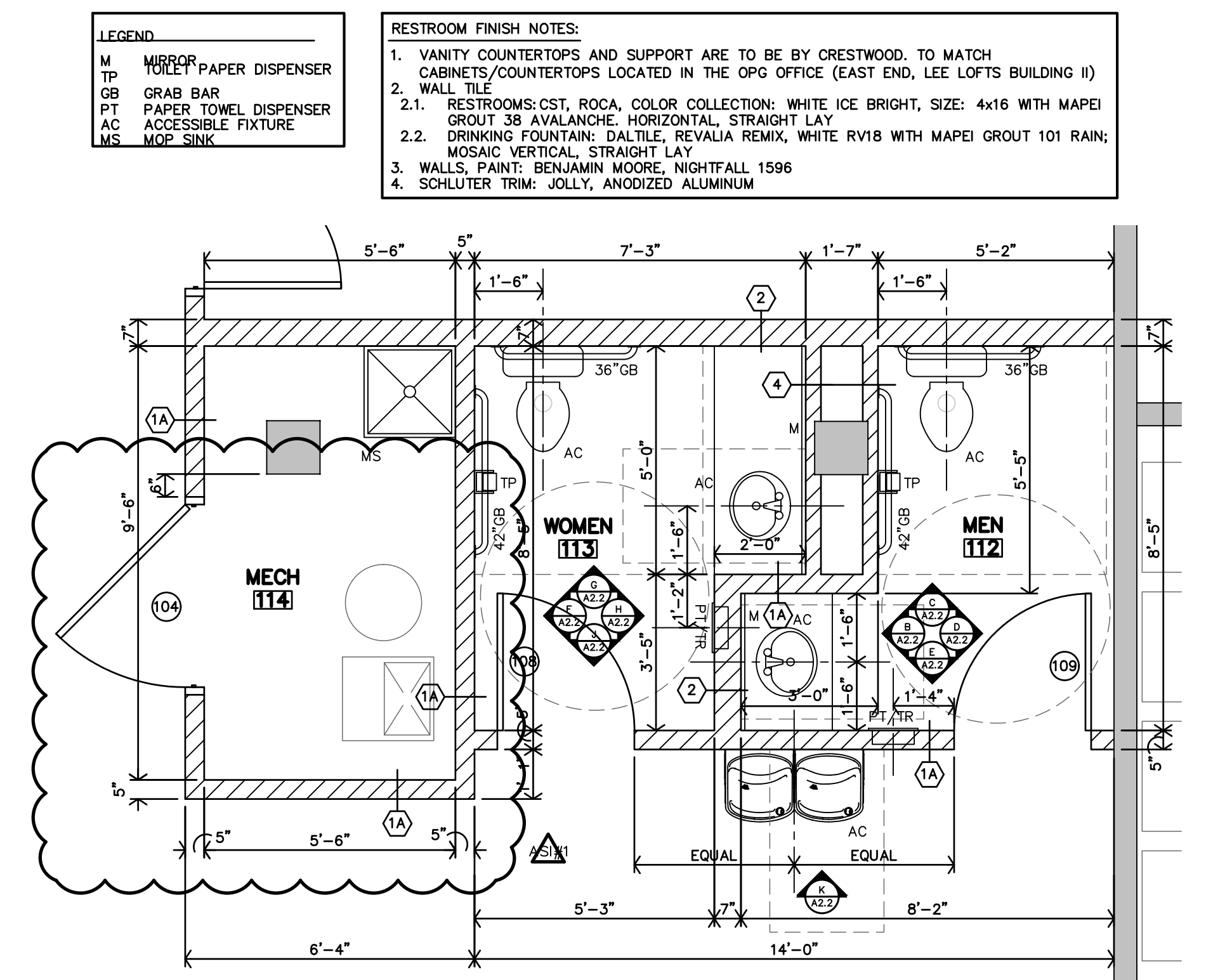
D MEN #112 INTERIOR ELEVATION
3/8"-1'-0"



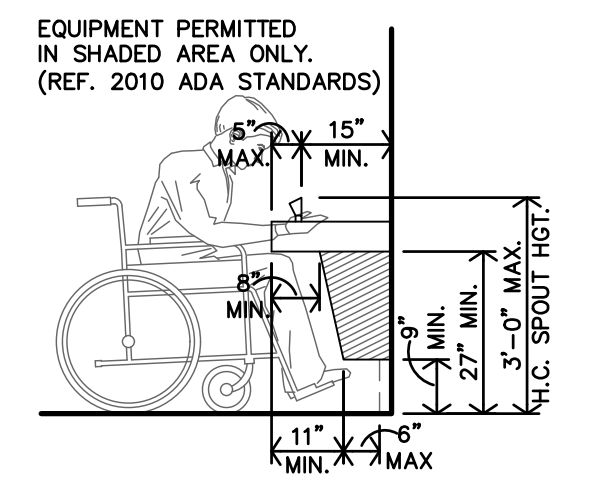
C MEN #112 INTERIOR ELEVATION
3/8"-1'-0"



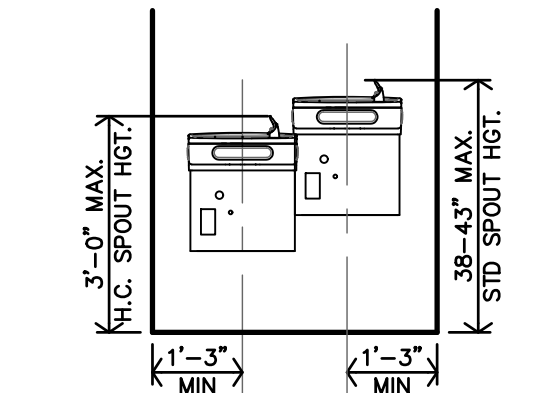
B MEN #112 INTERIOR ELEVATION
3/8"-1'-0"



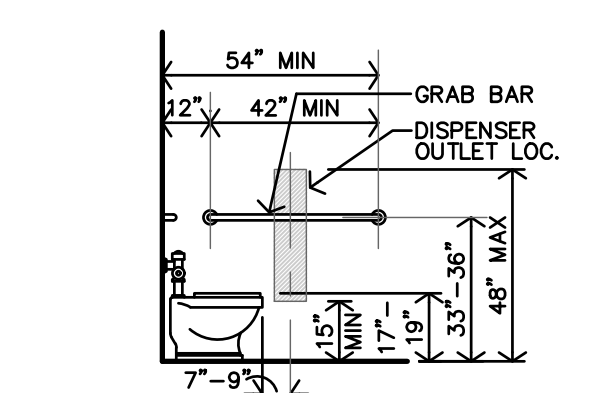
A ENLARGED RESTROOM FLOOR PLANS
3/8"-1'-0"



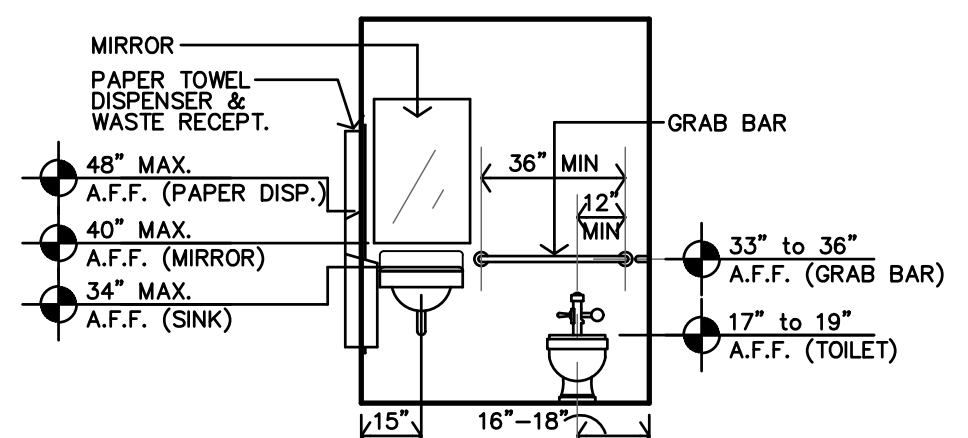
Q DRINKING FOUNTAIN DETAIL
3/8"-1'-0" FOR HC HEIGHTS



P DRINKING FOUNTAIN ELEVATION
3/8"-1'-0" FOR HC HEIGHTS



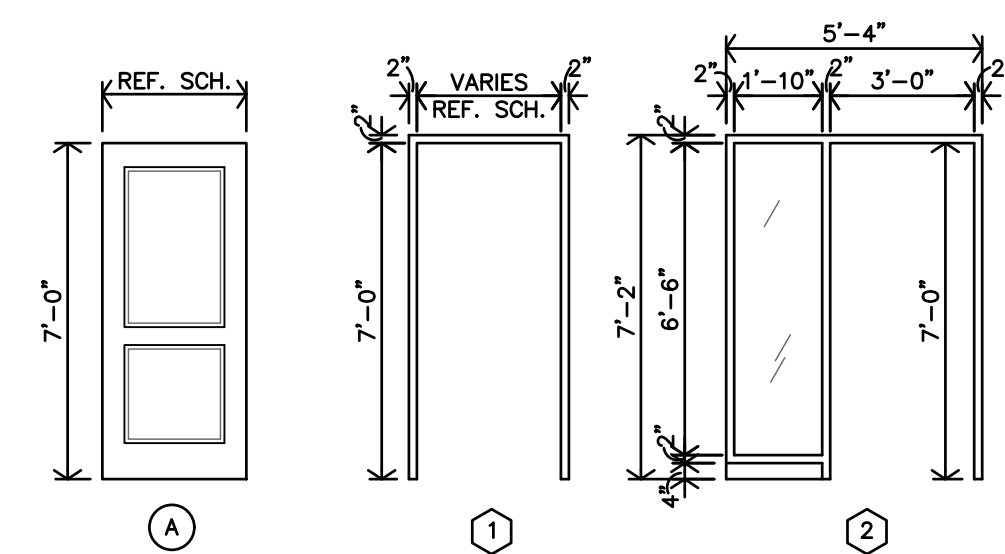
O TYP. HEIGHTS @ H.C. TOILET SIDE WALL
1/4"-1'-0" FOR ACCESSIBLE HEIGHTS



N TYP. HEIGHTS @ H.C. TOILET REAR WALL
1/4"-1'-0" FOR ACCESSIBLE HEIGHTS



REVISION:
10-14-2024
DATE: 9-16-2024
JOB: 24-3420
SHEET NO.:



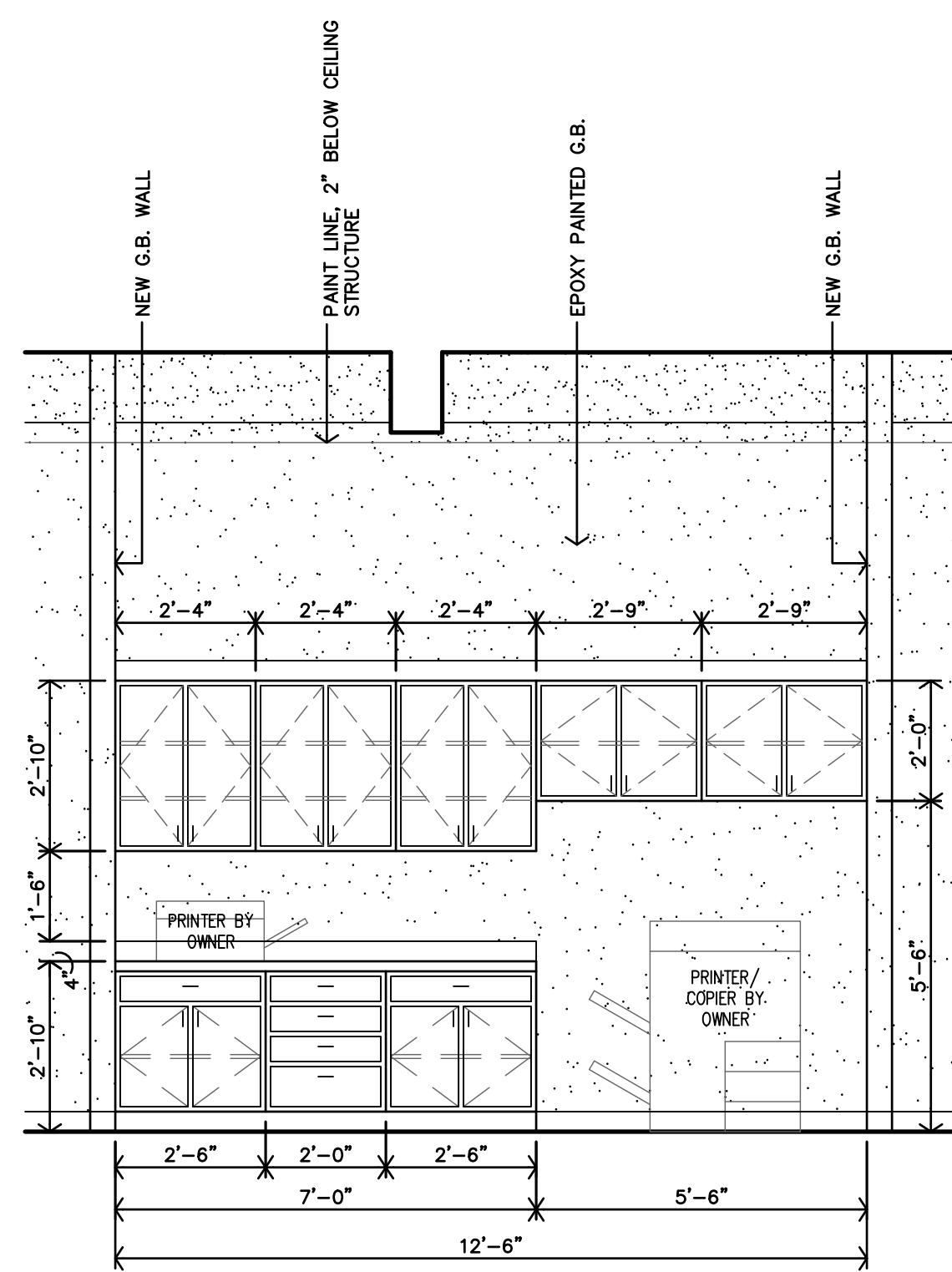
• GLAZING SHALL BE CLEAR, 1/4" THICK TEMPERED

C DOOR & FRAME TYPES
1/4"=1'-0"

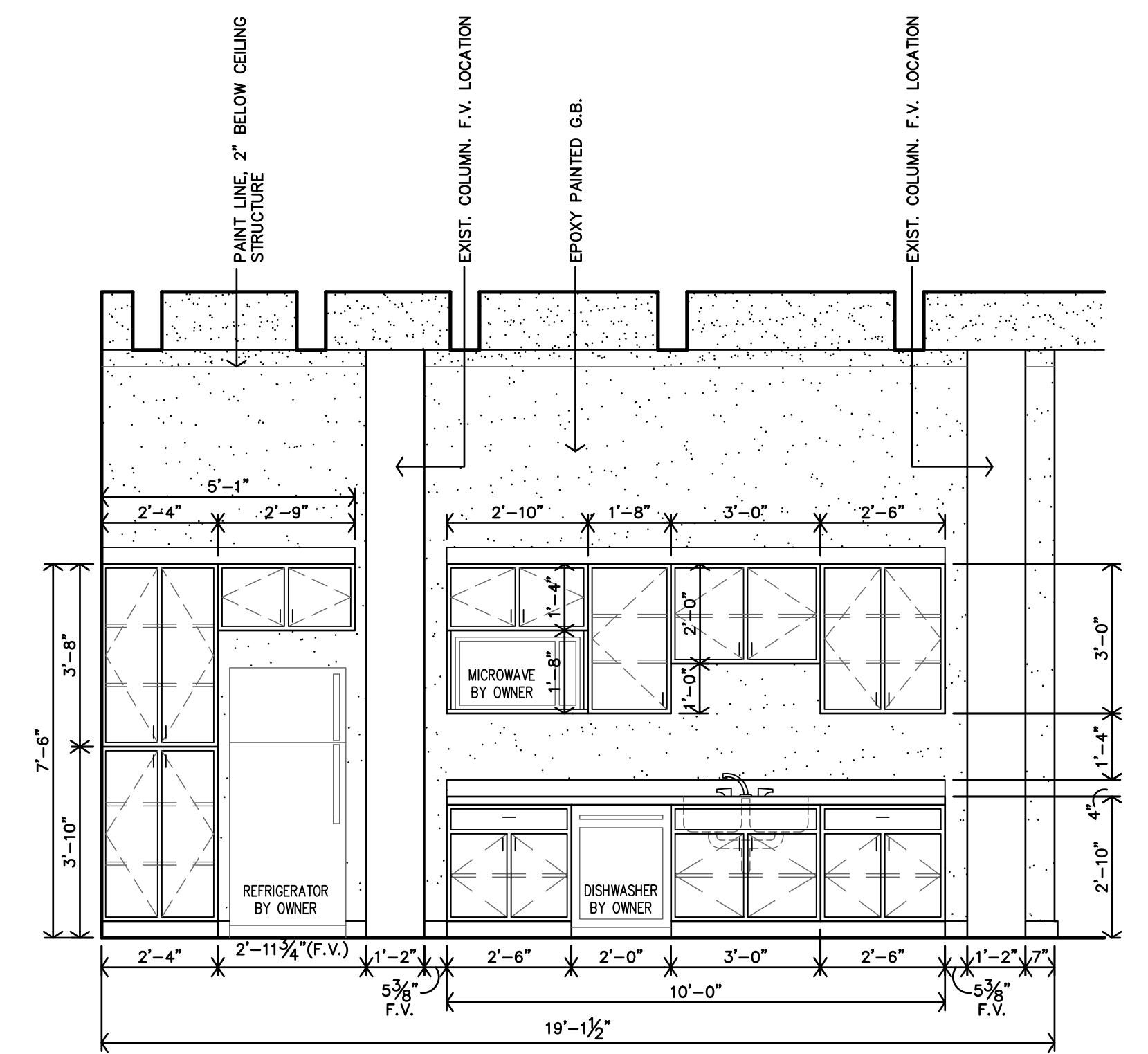
MARK	DOOR						FRAME						RATING	DETAILS	REMARKS
	SIZE			MATERIAL	TYPE	FINISH	MATERIAL			TYPE	FINISH				
	W	H	T	ALUMINUM HOLLOW METAL	S.C. WOOD, PANE TYPE	PREFINISHED PAINT STAINED	ALUMINUM HOLLOW METAL	WOOD	EXTERIOR TYPE	PREFINISHED PAINT STAINED					
101	3'-0"	7'-0"	1-3/4"	•	A	•	•	•	2	•	•	NONE		A	
102	3'-0"	7'-0"	1-3/4"	•	A	•	•	•	2	•	•	NONE		A	
103	3'-0"	7'-0"	1-3/4"	•	A	•	•	•	2	•	•	NONE		A	
104	4'-0"	7'-0"	1-3/4"	•	A	•	•	•	1	•	•	NONE		C	
105	3'-0"	7'-0"	1-3/4"	•	A	•	•	•	2	•	•	NONE		A	
107	3'-0"	7'-0"	1-3/4"	•	A	•	•	•	2	•	•	NONE		A	
108	3'-0"	7'-0"	1-3/4"	•	A	•	•	•	1	•	•	NONE		B	
109	3'-0"	7'-0"	1-3/4"	•	A	•	•	•	1	•	•	NONE		B	

GENERAL NOTES:
 1. ALL NEW DOOR HARDWARE SHALL BE LEVER TYPE LATCH SETS UNLESS NOTED OTHERWISE. COORDINATE W/ MFR. FOR ACCESSIBLE INSTALLATION REQUIREMENTS. COORDINATE KEYS REQUIREMENTS W/ OWNER.
 2. DOORS ARE TYPICALLY LOCATED W/ HINGE-SIDE JAMB 4" FROM ADJACENT WALL UNLESS NOTED OTHERWISE OR REQUIRED TO MEET LATCH-SIDE CLEARANCE PER ADA.
 3. EXISTING EXTERIOR DOORS - CONTRACTOR TO COORDINATE KEYS REQUIREMENTS WITH OWNER.

SPECIFIC NOTES:
 A. OFFICES: DOOR TO HAVE OFFICE-TYPE LATCH/LOCK SET.
 B. RESTROOMS: DOOR TO HAVE PRIVACY-TYPE LATCH/LOCK SET.
 C. MECHANICAL CLOSET: DOOR TO HAVE STORAGE-TYPE LATCH/LOCK SET



**B WORK AREA #106
INTERIOR ELEVATION**
3/8"=1'-0"



**A KITCHENETTE #111
INTERIOR ELEVATION**
3/8"=1'-0"



REVISION:
 10-14-2024

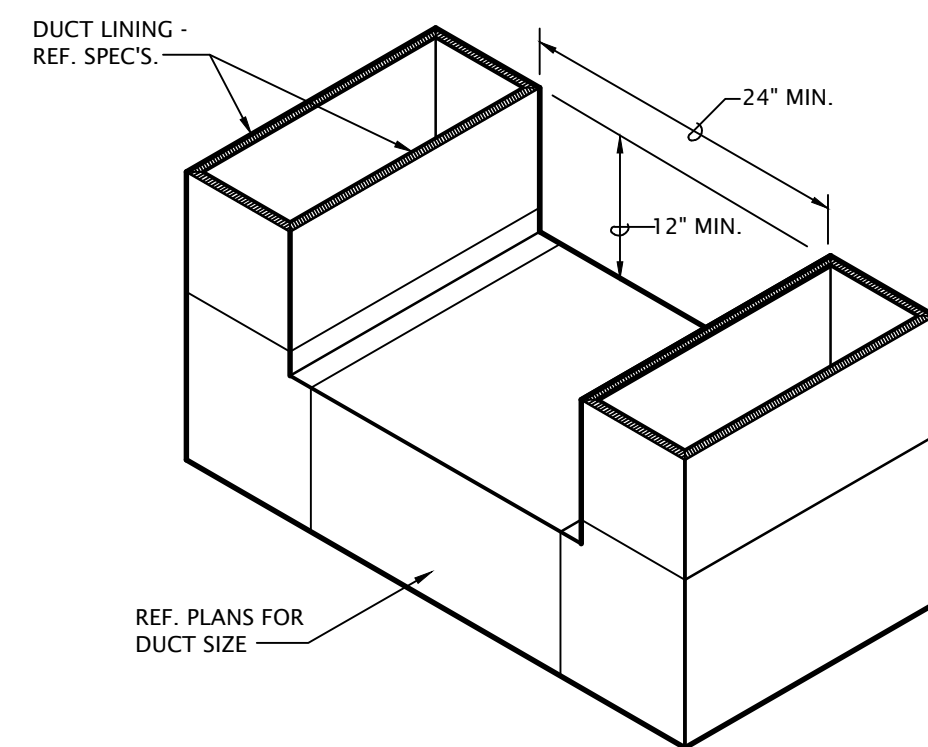
DATE: 9-16-2024
 JOB: 24-3420
 SHEET NO.:

MECHANICAL SYMBOLS

- ⊕ THERMOSTAT
- ☒ CONTROL CABLE, VERIFY TYPE WITH EQUIPMENT MANUFACTURER
- ☒ SQUARE SUPPLY DIFFUSER - TYPE AND AIRFLOW INDICATED
- ☒ SQUARE RETURN GRILLE - TYPE INDICATED
- GRILLE/DIFFUSER TAG
 XX TOP: DEVICE TAG (SEE SCHEDULE)
 X MIDDLE: NECK SIZE
 XX BOTTOM: AIRFLOW
- L MANUAL BALANCING DAMPER
- ☒ RECTANGULAR RETURN OR RELIEF AIR DUCT UP
- ☒ RECTANGULAR RETURN OR RELIEF AIR DUCT UP
- ☒ RECTANGULAR SUPPLY AIR DUCT UP
- ☒ RECTANGULAR SUPPLY AIR DUCT DOWN
 RECTANGULAR RETURN OR EXHAUST AIR DUCT DOWN
- ROUND DUCT UP
- ROUND DUCT DOWN
- ~ FLEXIBLE DUCTWORK - MAX 5'
- RIGID DUCT RUNOUT
- ☒ 90° ELBOW WITH TURNING VANES
- ⊕ PIPE TURNING UP
- ⊖ PIPE TURNING DOWN
- ⊕ 90° ELBOW
- ⊕ 45° ELBOW
- ⊕ TEE
- ⊕ TEE UP
- ⊖ TEE DOWN
- SANITARY DRAIN BELOW GRADE
- SANITARY VENT
- DOMESTIC COLD WATER
- DOMESTIC HOT WATER
- DOMESTIC HOT WATER RECIRC
- ⊕ UNION
- ⊕ BALL VALVE
- ⊕ CHECK VALVE
- ⊕ CONNECT TO EXISTING

SYMBOL MODIFICATION DESIGNATORS/ABBREVIATIONS

- OA OUTDOOR AIR
- RA RETURN AIR
- SA SUPPLY AIR
- MC MECHANICAL CONTRACTOR
- EC ELECTRICAL CONTRACTOR
- GC GENERAL CONTRACTOR
- AFF ABOVE FINISHED FLOOR
- AFG ABOVE FINISHED GRADE
- BG BELOW GRADE
- FG FINISHED GRADE
- FFCO FINISH FLOOR CLEAN OUT
- FWCO FINISH WALL CLEAN OUT
- FGCO FINISH GRADE CLEAN OUT
- UNO UNLESS NOTED OTHERWISE



③ **TRANSFER DUCT DETAIL**
NO SCALE

EXHAUST FAN SCHEDULE									
MARK	MFG.	MODEL	TYPE	FAN PERFORMANCE		ELECTRICAL CONNECTION		WEIGHT (LBS)	NOTES
				AIRFLOW (CFM)	E.S.P. (\"W.C.)	HP	VOLTS/PH		
EF-1,2	GREENHECK	SP-LP0511	DIRECT DRIVE CABINET EXHAUST FAN	50	0.33"	22 WATTS	120V	12	1, 2, 3
EF-3	GREENHECK	SP-LP0511	DIRECT DRIVE CABINET EXHAUST FAN	80	0.33"	22 WATTS	120V	12	1, 2, 3

NOTES:
 1. Provide factory mounted and wired disconnect switch.
 2. Provide with speed controller mounted on motor.

LOUVER/INTAKE HOOD SCHEDULE										
MARK	MANUFACTURER	MODEL	SIZE	FREE AREA (SF)	FINISH	SCREEN	DAMPER	SERVICE	DESCRIPTION	NOTES
L-1	GREENHECK	ESD-435	12"H x 12"W x 4" D	3.84	KYNAR, COLOR AS SELECTED BY ARCH.	BIRD	---	EXHAUST	ALUMINUM, DRAINABLE BLADE LOUVER	1

NOTES:
 1. Coordinate frame type and mounting with Arch., G.C., and Structural Engineer.

CONDENSING UNIT SCHEDULE												
MARK	MANUF.	MODEL	NOMINAL TONS	SUPPLY CFM	COOLING CAPACITY					ELECTRICAL		
					OA DB	ENT AIR DB/WB	SENS MBH	TOT MBH	MIN SEER	MCA	MOCP	V/PH
CU-1	CARRIER	24ACC460A003	5	1950	105	75/63	41.27	50.24	14	27.5	40	208/1

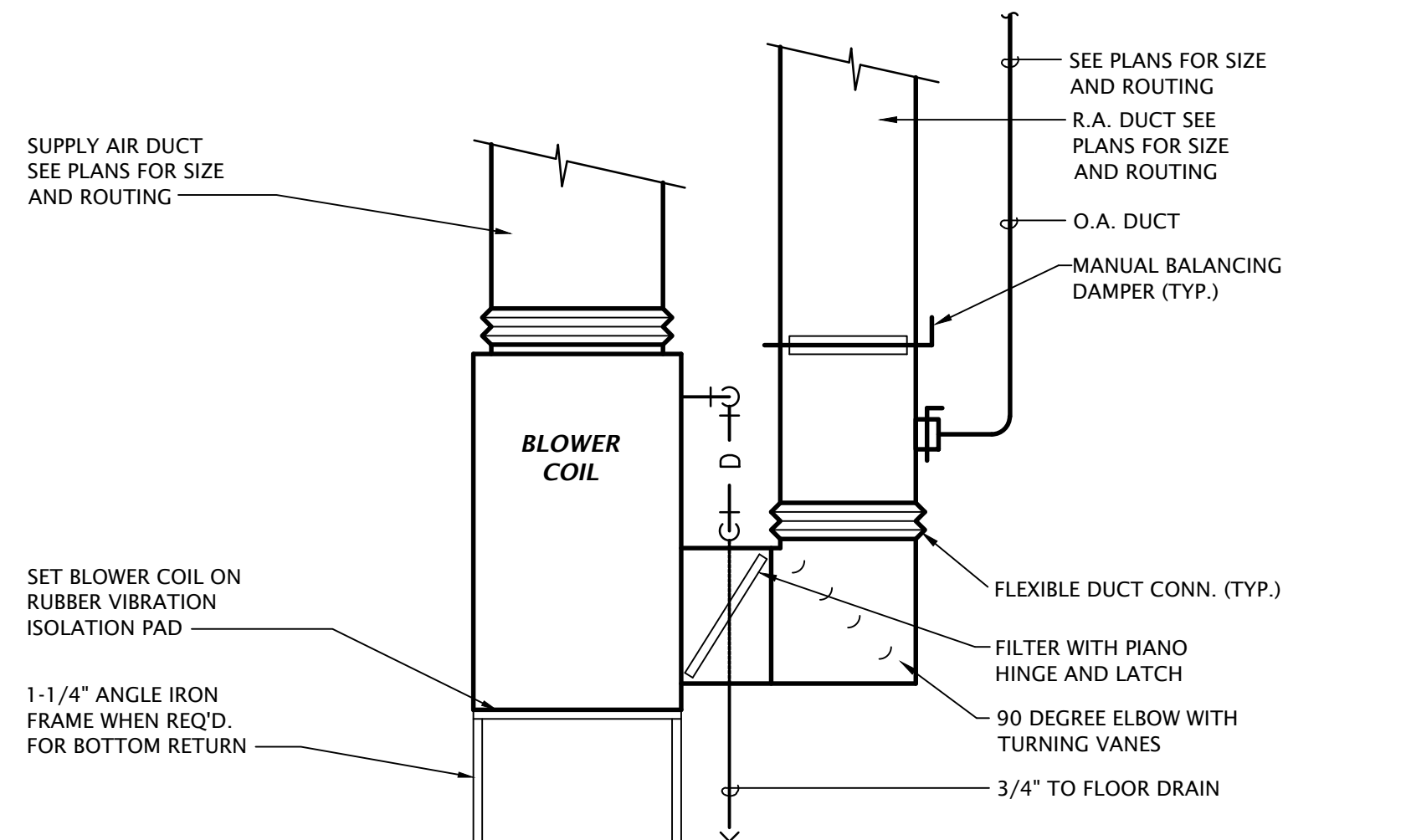
Notes:
 1. Refrigerant lines shall be field fabricated. Coordinate line sizing requirements with equipment manufacturer for length of run for each apartment. Provide suction accumulators, etc. as required.
 2. Verify minimum energy rating requirements with local AHJ.
 3. Provide with R140a refrigerant.

BLOWER COIL SCHEDULE										
MARK	MANUF.	MODEL	FAN			HEATING KW	V/Ph	MOTOR FLA	MCA	MOCP
			CFM	ESP	SPEED					
BC-1	CARRIER	FB4CNP061	1950	0.3	HIGH	15	208/1	6.0	53.8/ 22.7	60/ 25

Notes:
 1. Single point connection required, coordinate the exact electrical requirements of equipment provided with E.C.
 2. Provide all accessories required for downflow operation where indicated on drawings.
 3. 15KW electric heater is two circuit 208/1ph with circuit breaker. Coordinate exact requirements of equipment provided with E.C.
 4. Provide with manufacturer's fan coil filter cabinet accessory at return air end with MERV 8 filter.
 5. Provide with 7-day programmable thermostat

AIR DEVICE SCHEDULE											
MARK	MANUFACTURER	MODEL	APPLICATION				FINISH	MOUNTING	DAMPER	DESCRIPTION	NOTES
			SUPPLY	RETURN	EXHAUST	TRANSFER					
SD-A	PRICE	SDG AL	•				Mill Aluminum	Spiral Duct	Yes	Spiral duct mounted aluminum double deflection supply grille with front blades parallel to long dimension, size as indicated on drawings	

GENERAL NOTES:
 • Maximum noise criteria shall be 25.
 • Runouts to diffusers shall be same size as neck, U.N.O.
 • Verify finish with Architect, all devices shall be suitable for field painting.



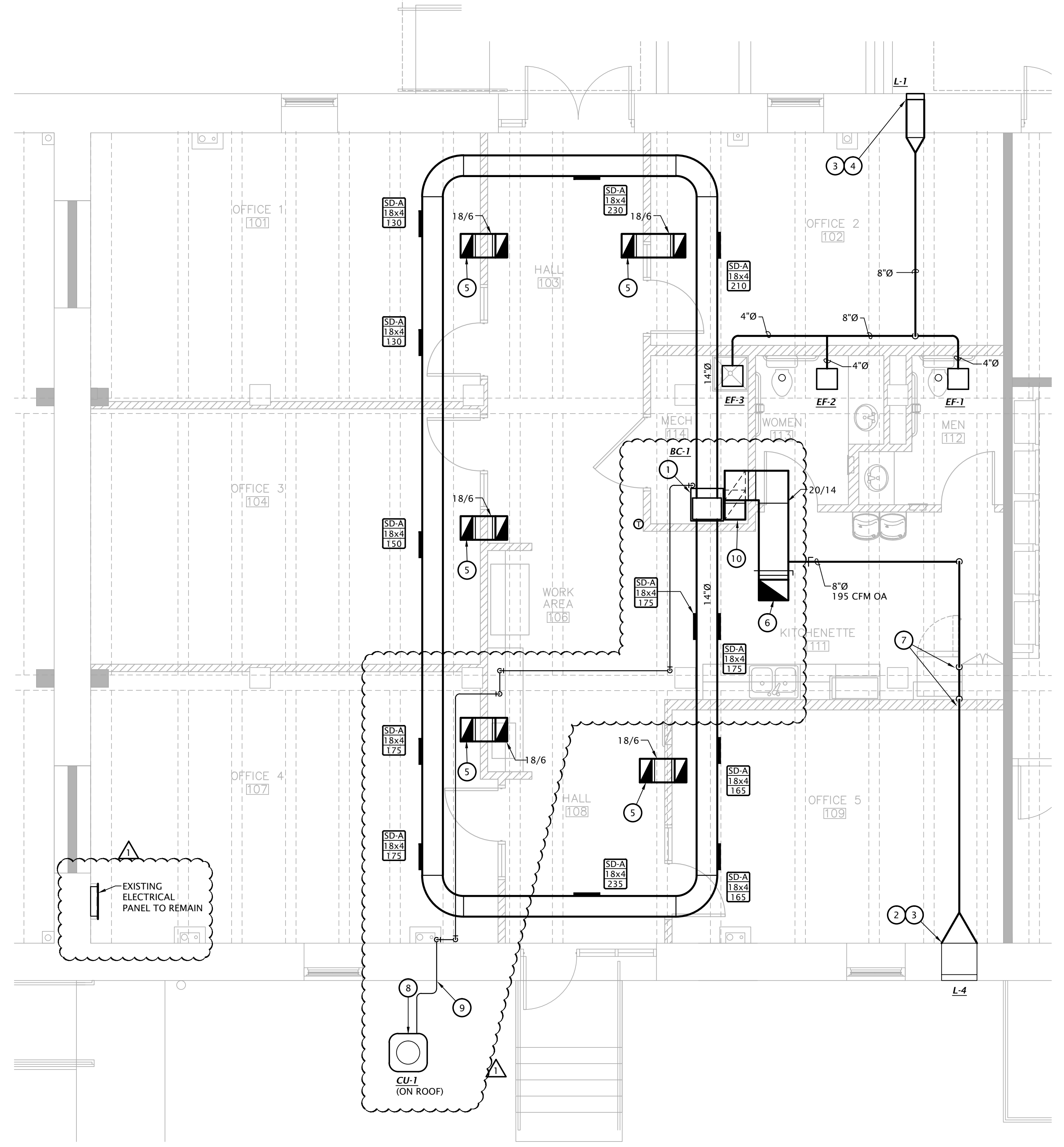
② **BLOWER COIL DETAIL**
NO SCALE

NOTE:

- ALL EXPOSED DUCTWORK SHALL BE SPIRAL DUCT MOUNTED AS HIGH AS POSSIBLE BELOW STRUCTURE, UTILIZING CABLE HANGING SYSTEM EQUAL TO DUCTMATE CLUTCHER. SEE DETAIL 2-M6.3 FOR ADDITIONAL INFO.
- **ALTERNATE:** PROVIDE ALTERNATE PRICING FOR SPIRAL DOUBLE WALL INSULATED DUCT WITH MILL PHOSPHATIZED EXTERIOR, PERFORATED GALVANIZED LINER, AND 1" INSULATED AIR GAP, MANUFACTURED TO 1985 SMACNA STANDARDS.

HVAC PLAN NOTES BY SYMBOL

1. ROUTE CONDENSATE TO ABOVE FLOOR DRAIN IN MECH. ROOM.
2. CONNECT TO EXISTING LOUVER. FIELD VERIFY EXACT SIZE AND LOCATION.
3. PROVIDE FULL SIZED DUCT CONNECTION AT LOUVER AND TRANSITION TO DUCT SIZE INDICATED. SLOPE FIRST 5 FT OF DUCT TOWARDS EXTERIOR.
4. COORDINATE EXACT LOUVER LOCATION AND WALL OPENING REQUIREMENTS WITH ARCHITECT, G.C., AND STRUCTURAL ENGINEER.
5. TRANSFER AIR DUCT WITH 1/2" DUCT LINER AND (2) 90° ELBOWS UP MOUNTED HIGH IN WALL. SEE DETAIL 1-M6.1 FOR MORE INFORMATION.
6. RETURN AIR DUCT WITH 1/2" DUCT LINER. TERMINATE OPEN ENDED DUCT WITH ELBOW UP AS HIGH AS POSSIBLE WITH MINIMUM 6" CLEARANCE BETWEEN DUCT AND DECK.
7. ROUTE DUCT AS HIGH AS POSSIBLE BETWEEN JOISTS AND OFFSET AROUND BEAM.
8. MOUNT CONDENSING UNIT ON 3-1/2" THICK LEVEL CONCRETE PAD ON GRADE. COORDINATE WITH G.C. AND ARCH.
9. ROUTE REFRIGERANT PIPING FROM CONDENSING UNIT ON ROOF TO BLOWER COIL. PENETRATE EXTERIOR WALL 18" A.F.G. MIN. AND UTILIZE AIREX TITAN WALL PENETRATION SEAL AT PENETRATION OF EXTERIOR WALL. ROUTE PIPING CONCEALED IN WALLS/ CHASE ON INTERIOR OF EXISTING WALL. ROUTE PIPING THROUGH EXPOSED CEILING SPACES AS HIGH AS POSSIBLE AND IN BETWEEN EXISTING JOISTS WHERE POSSIBLE. COORDINATE EXACT ROUTING WITH ARCHITECT PRIOR TO INSTALLATION.
10. OFFSET RETURN DUCT IN VERTICAL AS REQUIRED.



① **COMMERCIAL SPACE #2 HVAC PLAN**
1/4" = 1'-0"



REVISION:
 Δ ASI #1 10-14-2024
 DATE: 9-13-2024
 JOB: 24-3420
 SHEET NO.:

WASTE AND VENT PLAN NOTES BY SYMBOL

- ROUTE 2" VENT UP THROUGH MECHANICAL ROOM ABOVE AND TIE INTO EXISTING 2" VENT SERVING FIXTURES IN MECHANICAL ROOM. FIELD COORDINATE EXACT ROUTING WITH EXISTING CONDITIONS. FIELD VERIFY EXACT SIZE AND LOCATION OF EXISTING PIPING.
- ROUTE VENT PIPING AS HIGH AS POSSIBLE. OFFSET AROUND BEAMS AS REQUIRED.
- EXISTING WASTE PIPING SERVING FLOOR ABOVE. FIELD VERIFY EXACT SIZE AND LOCATION OF EXISTING. MODIFY EXISTING PIPING IF REQUIRED FOR NEW WORK. FIELD VERIFY EXACT REQUIREMENTS.
- CONNECT DRAIN FROM DISHWASHER TO INDIRECT CONNECTION AT GARBAGE DISPOSER. COORDINATE EXACT REQUIREMENTS WITH EQUIPMENT PROVIDED BY OTHERS.
- CONNECT TO EXISTING 4" DRAIN IN BASEMENT. FIELD VERIFY EXACT SIZE AND LOCATION OF EXISTING.
- ROUTE DRAIN PIPING AS HIGH AS POSSIBLE. FIELD VERIFY EXACT ROUTING WITH EXISTING CONDITIONS.

PLUMBING SIZING SYMBOLS

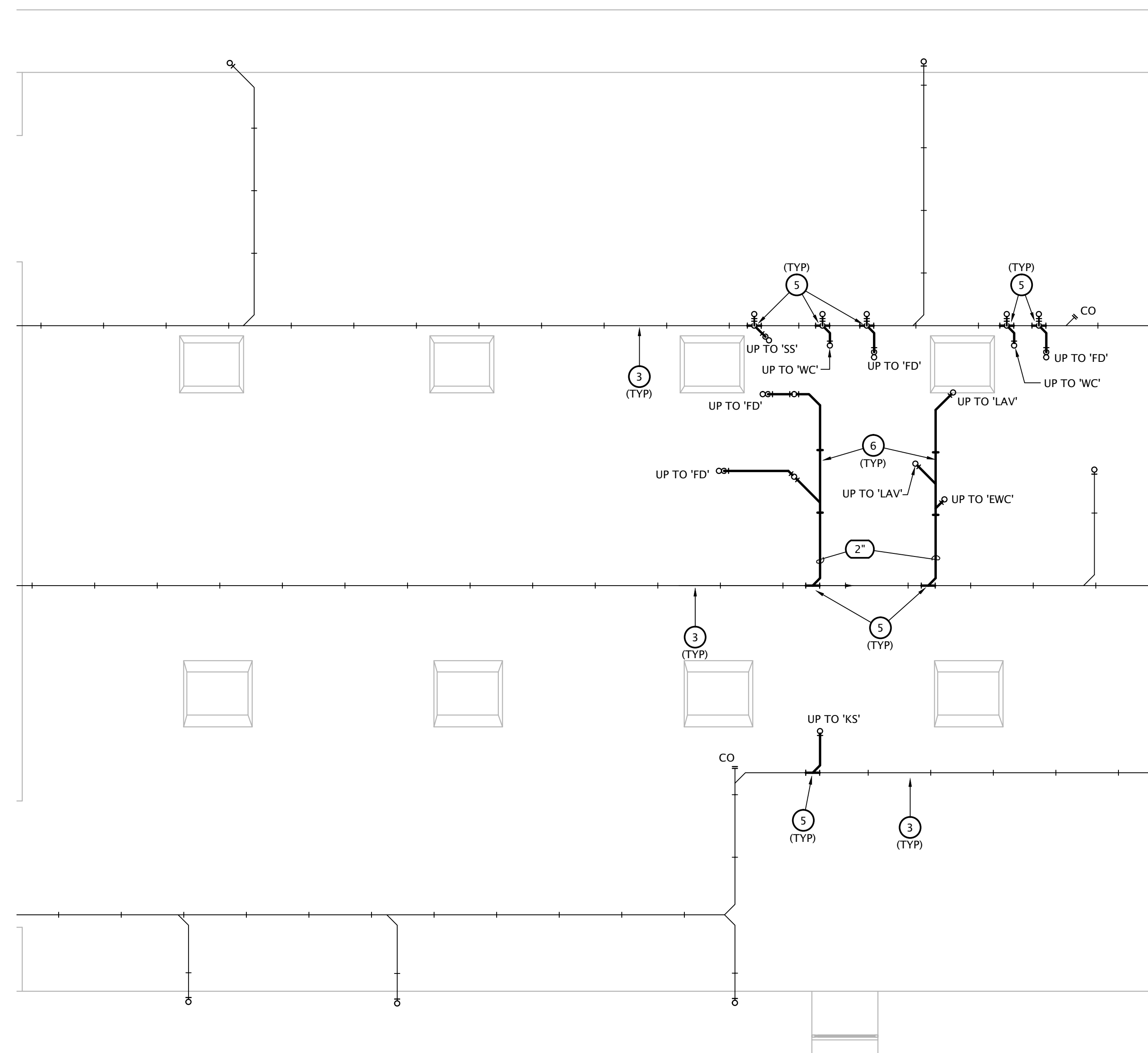
	DRAIN (X = SIZE)
	VENT (X = SIZE)
	WASTE STACK VENT (X = SIZE)

LST Consulting Engineers, PA
 MANHATTAN 4800 Van Du Lac Pkwy, Suite 201
 Manhattan, KS 66503
 785.587.8042
 www.LSTengineers.com
 mail@LSTengineers.com
 Project 24070

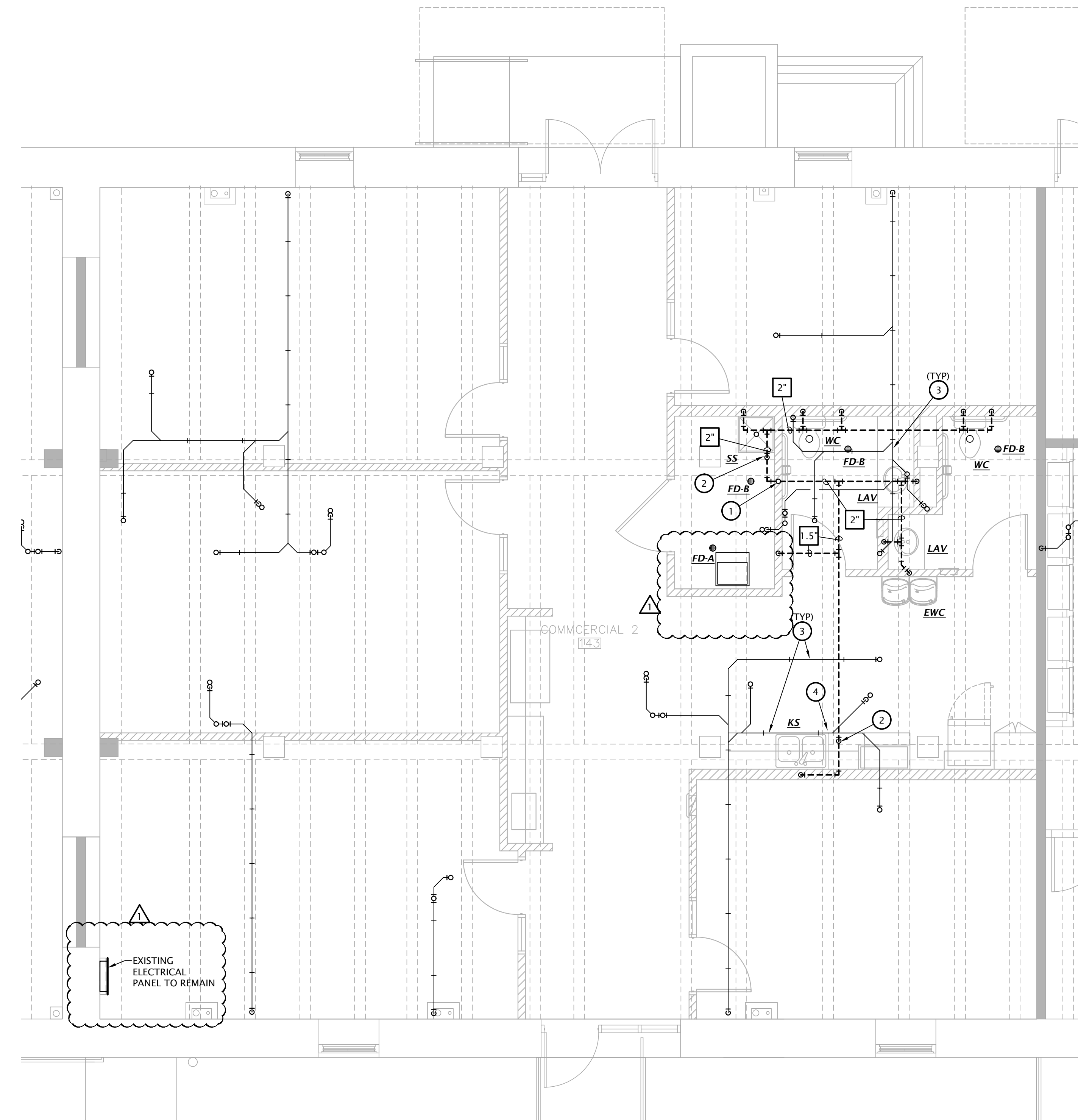
WICHITA 1225 S. Warrington, Suite 301
 Wichita, Kansas 67202
 316.285.0696
 Sept 2024

JonesGillamRenz
 1881 Main Street, Suite 301
 Kansas City, MO 64108
 jgr@jgarchitects.com
 785.827.0386

TENANT SPACE 2 - OFFICES
LEE LOFTS BLDGD 2 - FIRST FLOOR
KANSAS
SALINA,



1 COMMERCIAL SPACE #2 BASEMENT WASTE AND VENT PLAN
 1/4" = 1'-0"



1 COMMERCIAL SPACE #2 WASTE AND VENT PLAN
 1/4" = 1'-0"



REVISION:
 ASI #1 10-14-2024

DATE: 9-13-2024
 JOB: 24-3420
 SHEET NO.:

M1.2

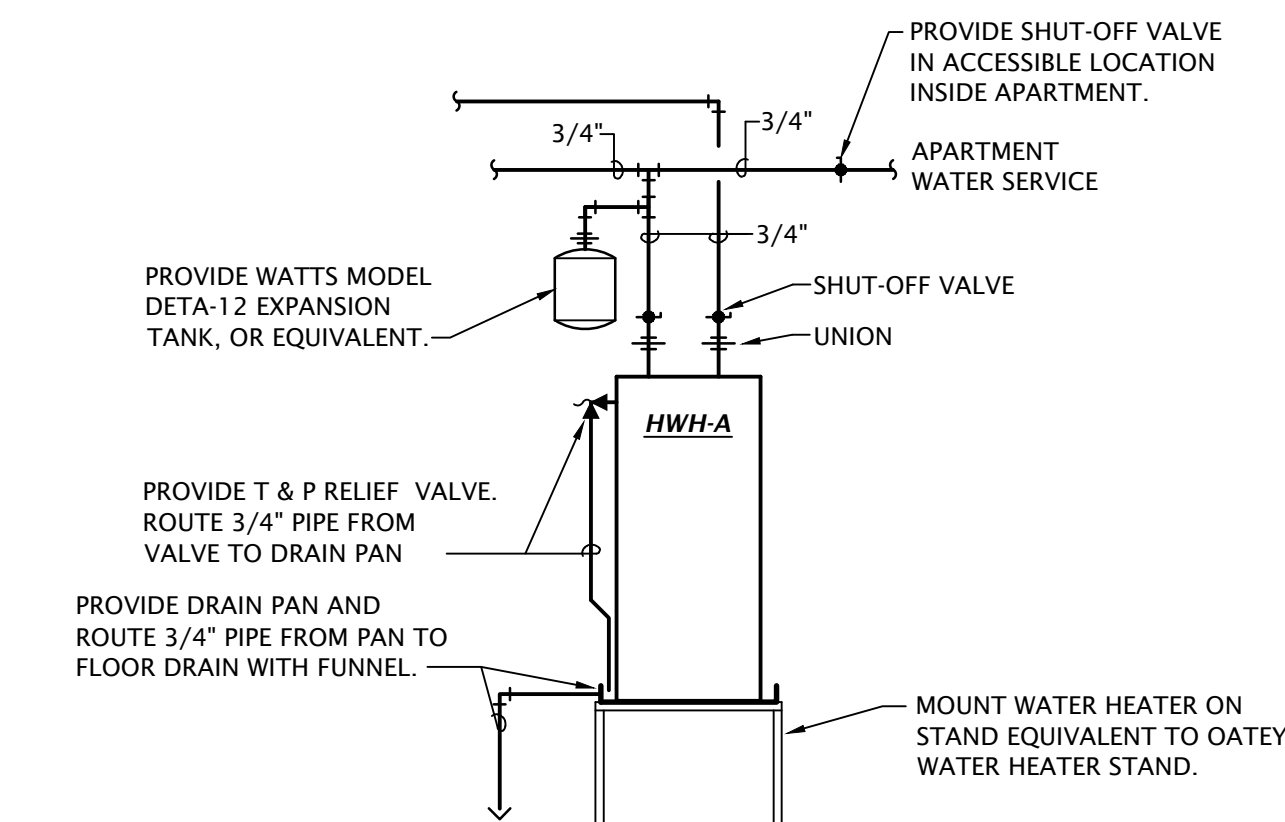
COPYRIGHTED ©

PLUMBING FIXTURE SCHEDULE

MARK	MANUFACTURER	DESCRIPTION	TRIM		ROUGH-IN SIZES				NOTES
			MANUFACTURER	DESCRIPTION	WASTE	VENT	CW	HW	
WC	KOHLER	Model 3999-0 "Highline" ADA compliant flush tank water closet, white vitreous china, two piece, 12" rough-in, elongated 16-1/2" high bowl, siphon jet flushing action, 1.28 GPF, polished chrome actuator located on open side of room.	KOHLER	#4650-0 Lustra white, open front, plastic seat with cover	4"	2"	1/2"	---	1
LAV-A	KOHLER	Model 2196-4-0 self-rimming lavatory, white vitreous china, 20"W x 17", faucet holes on 4" centers.	KOHLER	Model 15182-4RA single handle faucet. Provide pop-up drain.	2"	1-1/2"	1/2"	1/2"	2,4
KS-A	JUST	Model DL-2233-A-GR two compartment 18 GA stainless steel sink, self rimming, 14"x16"x8"D inside, fully undercoated, faucet holes as req.	DELTA IN-SINK-ERATOR	Model 400-HDF single handle kitchen sink faucet with hose spray attachment. Chrome finish. Provide basket strainer. "Badger 5" garbage disposal, 1/2hp, 120V, cord and plug connected.	2"	1-1/2"	1/2"	1/2"	2,4
KS-B	JUST	Model DL-ADA-2233-A-GR two compartment 18 GA stainless steel sink, self rimming, 14"x16"x8"D inside, fully undercoated, faucet holes as req., and drain holes center rear.	DELTA IN-SINK-ERATOR	Model 400-HDF single handle kitchen sink faucet with hose spray attachment. Chrome finish. Provide basket strainer. "Badger 5" garbage disposal, 1/2hp, 120V, cord and plug connected.	2"	1-1/2"	1/2"	1/2"	1,3,2,4
SS	FIAT	Model MSB-2424 one piece molded stone mop basin, 24" square, stainless steel integral drain body with caulk connection, stainless steel wall guards.	DELTA	Model 28T9 faucet with hose thread outlet, vacuum breaker, pail hook, wall brace, metal lever handles.	3"	1-1/2"	3/4"	3/4"	4
EWC	ELKAY	Model LZSTL8WSLK ADA compliant dual height, self-contained combination bottle filler and water cooler with stainless steel basin, front push bar actuator, lead-free cooling system capable of cooling 8.0 GPH, 120 volts.			2"	1-1/2"	1/2"	---	
ICB	WATER TITE	Model W9700 ice maker connection box with 1/4 turn ball valve and 1/2" sweat copper connection.			---	---	1/2"	---	
FD-A	SIOUX CHIEF	Series 833 adjustable floor drain with nickel bronze strainer. Provide Proset Trapguard trap protection device and condensate funnel.			2"	---	---	---	
FD-B	SIOUX CHIEF	Series 833 adjustable floor drain with nickel bronze strainer. Provide Proset Trapguard trap protection device.			2"	---	---	---	
HWH-A	A.O. SMITH	Model ENT-40, 40 gallon electric water heater, (2) non simultaneous 4500 watts, 208 volt / 1-phase heating elements, 21 GPH recovery @ 90°F temp rise. Supplied with temperature & pressure relief valve and brass drain valve.							5
HWP	BELL & GOSSETT	Model NBF-33 circulation pump, bronze body, 10 GPM @ 10' head, 120 VAC. Provide clamp-on aquastat for pump control.							

GENERAL:
 - Provide fixtures with all trim necessary for complete installation

- NOTES:
1. Fixture and installation to meet requirements of Americans with Disabilities Act.
 2. Provide 1/4 turn angle stops with escutcheon plates, and chrome plated or braided stainless steel supplies, and 1-1/4" cast brass p-trap.
 3. Insulate water and waste piping below lavatory. Utilize insulation kit equivalent to LavGuard by Truebro.
 4. Trim shall be provided with polished chrome finish.
 5. Mount water heater on stand equivalent to Oatey water heater stand.



2 WATER HEATER PIPING DIAGRAM
 NO SCALE

NOTE:

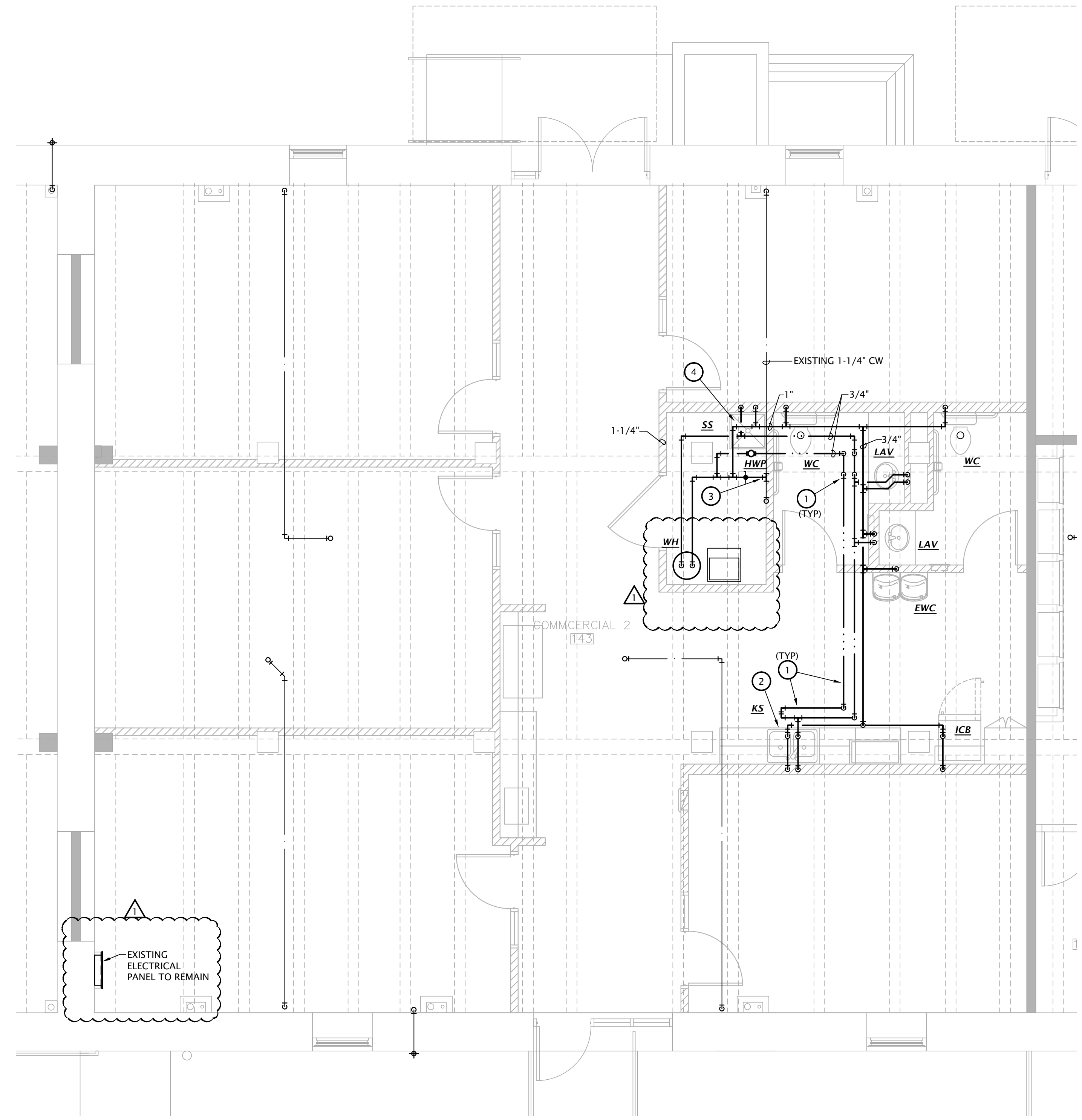
- EXPOSED PIPING TO BE ROUTED TIGHT TO BOTTOM OF EXISTING JOISTS. UTILIZE COPPER OR RIGID PEX, ROUTED PERPENDICULAR TO BUILDING SURFACES. NEATLY TRAIN PIPING TOGETHER ALONG EXISTING CONSTRUCTION AND COORDINATE WITH OTHER TRADES. OBTAIN APPROVAL OF ROUTING FROM ARCHITECT PRIOR TO ROUGHING IN.
- MODIFY EXISTING FIRE SPRINKLER SYSTEM TO PROVIDE NFPA 13 COMPLIANT SYSTEM THROUGHOUT AREA OF REMODEL.

COPPER PIPE SIZE INDICATED	ALTERNATE MATERIAL/SIZE		
	Cross-linked polyethylene (PEX)	Polypropylene (PP)	
1/2"	3/4"	1/2"	
3/4"	1"	1"	
1"		1-1/4"	
1-1/4"		1-1/2"	
1-1/2"		2"	
2"		2-1/2"	
2-1/2"		3"	
3"		3-1/2"	

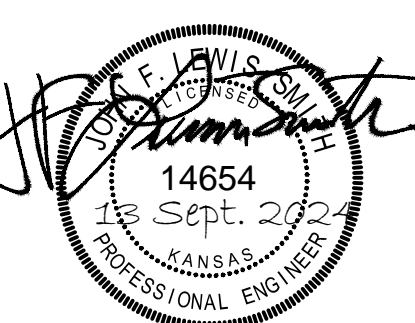
Note: Pipe sizes indicated on drawings are for Type L copper pipe. If alternate materials are used, sizes shall be as indicated above. Where no pipe size is shown, use of indicated material in design pipe size is prohibited. Do not use materials other than those listed.

1 HVAC PLAN NOTES BY SYMBOL

1. ROUTE DOMESTIC WATER PIPING AS HIGH AS POSSIBLE AND OFFSET AROUND BEAMS.
2. PROVIDE 1/2" HW BRANCH BELOW KITCHEN SINK AND CONNECT DISHWASHER. COORDINATE EXACT REQUIREMENTS WITH EQUIPMENT PROVIDED BY OTHERS.
3. PROVIDE 1-1/4" DOMESTIC WATER BRANCH WITH SHUT-OFF VALVE. CONNECT TO EXISTING 1-1/4" BRANCH SERVING MECH/ JANITOR CLOSETS ABOVE. FIELD VERIFY EXACT SIZE AND LOCATION OF EXISTING. MODIFY EXISTING PIPING AS REQUIRED FOR NEW WORK. FIELD VERIFY EXACT REQUIREMENTS.



1 COMMERCIAL SPACE #2 DOMESTIC WATER PLAN
 1/4" = 1'-0"



REVISION:
 ASI #1 10-14-2024

DATE: 9-13-2024
 JOB: 24-3420
 SHEET NO.:

M1.3

COPYRIGHTED

GENERAL ELECTRICAL DEMOLITION NOTES

- REMOVE ALL ELECTRICAL INSTALLATION FROM PROJECT AREA, UNLESS REQUIRED FOR NEW WORK OR EXISTING INSTALLATION NOT AFFECTED BY REMODEL. COORDINATE WITH OWNER AND G.C.
- NOT ALL ITEMS REQUIRED TO BE DEMOLISHED MAY BE INDICATED ON DRAWINGS. ALL DEMOLITION OF AFFECTED SPACE SHALL BE PERFORMED AS IF INDICATED.
- REMOVE ALL NM, BX, MC, AC AND OTHER CABLE SYSTEMS AND WIRING FOR ALL ABANDONED CIRCUITS.
- REMOVE ALL ABANDONED CONDUITS ABOVE LAY-IN CEILINGS, EXPOSED CONDUITS, FLEXIBLE CONDUITS, SURFACE RACEWAY, SURFACE MOUNTED OUTLET/JUNCTION BOXES AND EQUIPMENT UNLESS NOTED OTHERWISE.
- WHERE ABANDONED FEEDERS AND BRANCH CIRCUITS ARE CONCEALED WITHIN WALLS, FLOORS AND HARD CEILINGS THAT ARE TO REMAIN, REMOVE ALL WIRING AND CAP CONDUITS AT BOTH ENDS.
- WHERE ABANDONED OUTLET AND JUNCTION BOXES ARE RECESSED FLUSH IN WALLS, FLOORS AND HARD CEILINGS THAT ARE TO REMAIN, REMOVE ALL WIRING AND WIRING DEVICES AND PROVIDE BLANK STAINLESS STEEL COVERPLATES FOR BOXES 6"x6" AND SMALLER. REMOVE BOXES LARGER THAN 6"x6" AND PATCH SURFACE TO MATCH EXISTING. COORDINATE WITH ARCHITECT FOR FINAL DIRECTION.
- ALL EQUIPMENT, FIXTURES, RACEWAY, WIRING AND DEVICES WHICH ARE REMOVED SHALL BE REMOVED FROM THE JOB SITE BY THIS CONTRACTOR, UNLESS DIRECTED OTHERWISE BY THE ARCHITECT OR OWNER'S REPRESENTATIVE. PRIOR TO REMOVING DEMOLISHED EQUIPMENT AND LIGHT FIXTURES FROM SITE, ALLOW OWNER'S REPRESENTATIVE TO DETERMINE IF FIXTURES SHALL BE SALVAGED BY THE OWNER. PROPERLY DISPOSE OF ALL FIXTURES NOT SALVAGED BY OWNER.

ELECT. DEMO PLAN NOTES BY SYMBOL

- REMOVE ELECTRIC HEATER AND ALL ASSOCIATED INSTALLATION FROM PROJECT AREA.
- REMOVE EXISTING LIGHT FIXTURES AND ALL ASSOCIATED ELECTRICAL INSTALLATION FROM PROJECT AREA.
- EXISTING EXIT/ EMERGENCY LIGHTS TO REMAIN. MODIFY EXISTING CIRCUITRY AS REQUIRED. SEE NEW WORK PLAN FOR ADDITIONAL INFO.
- REMOVE ALL EXISTING RECEPTACLES AND ASSOCIATED ELECTRICAL INSTALLATION FROM PROJECT AREA.
- EXISTING PANEL 'C2' TO REMAIN.

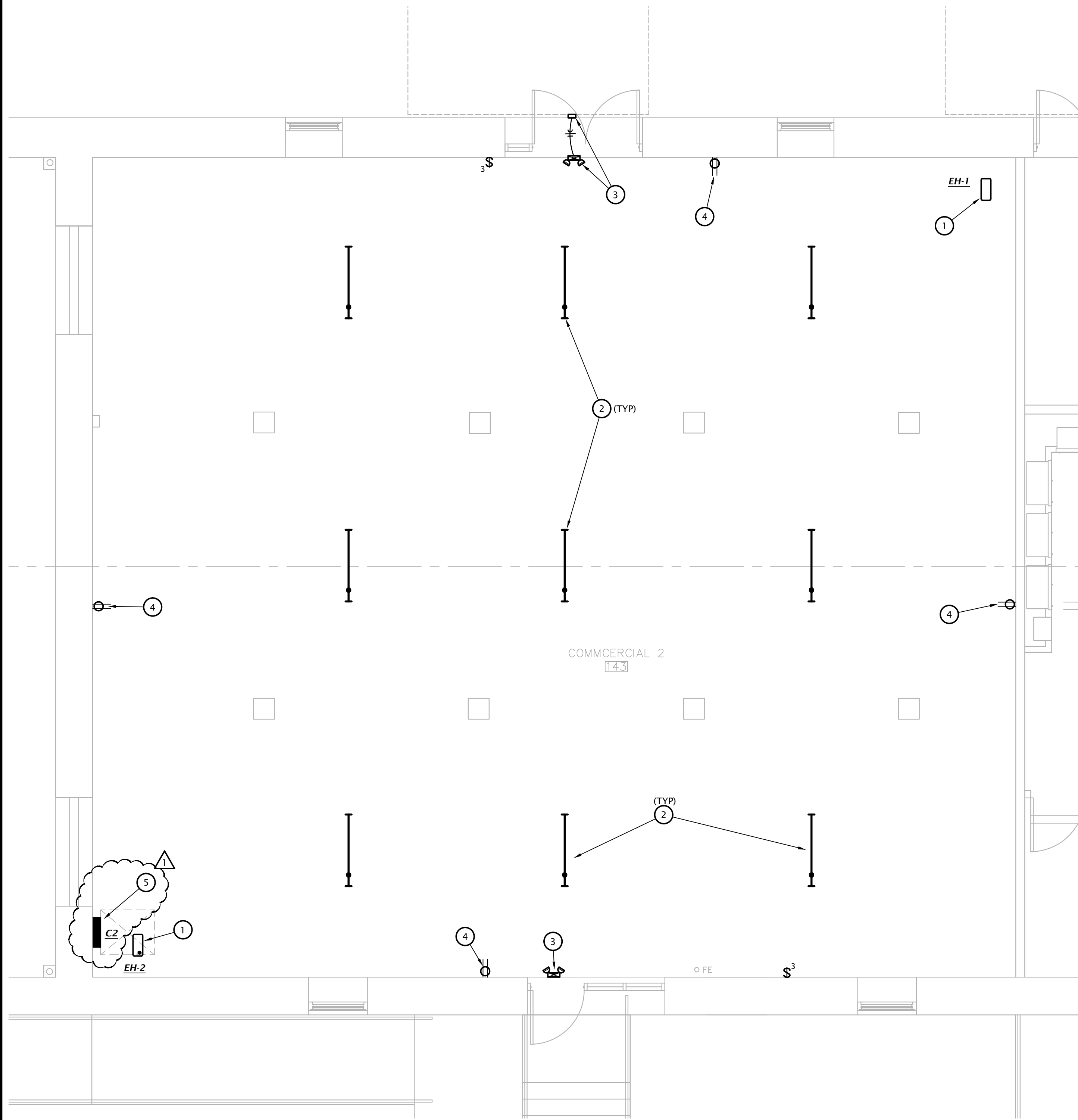
AT ALL AREAS WHERE EXPOSED, CIRCUITRY SHALL BE INSTALLED IN EMT RACEWAY. GROUP CONDUITS TOGETHER AND ROUTE NEATLY AT UNDERSIDE OF JOIST STRUCTURE, PARALLEL AND PERPENDICULAR TO BUILDING SURFACES. BRANCH CIRCUITRY SHALL BE ROUTED OVERHEAD TO FULLEST EXTENT POSSIBLE, WITH WIRING TO INDIVIDUAL DEVICES ON EXISTING BRICK WALLS INSTALLED VERTICALLY FROM ABOVE. ALL HORIZONTAL RACEWAY INSTALLATION ON WALLS SHALL OCCUR ABOVE PAINTLINE. OBTAIN APPROVAL OF ROUTING WITH ARCHITECT PRIOR TO INSTALLATION, AND COORDINATE INSTALLATION WITH OTHER TRADES.

GENERAL POWER NOTES

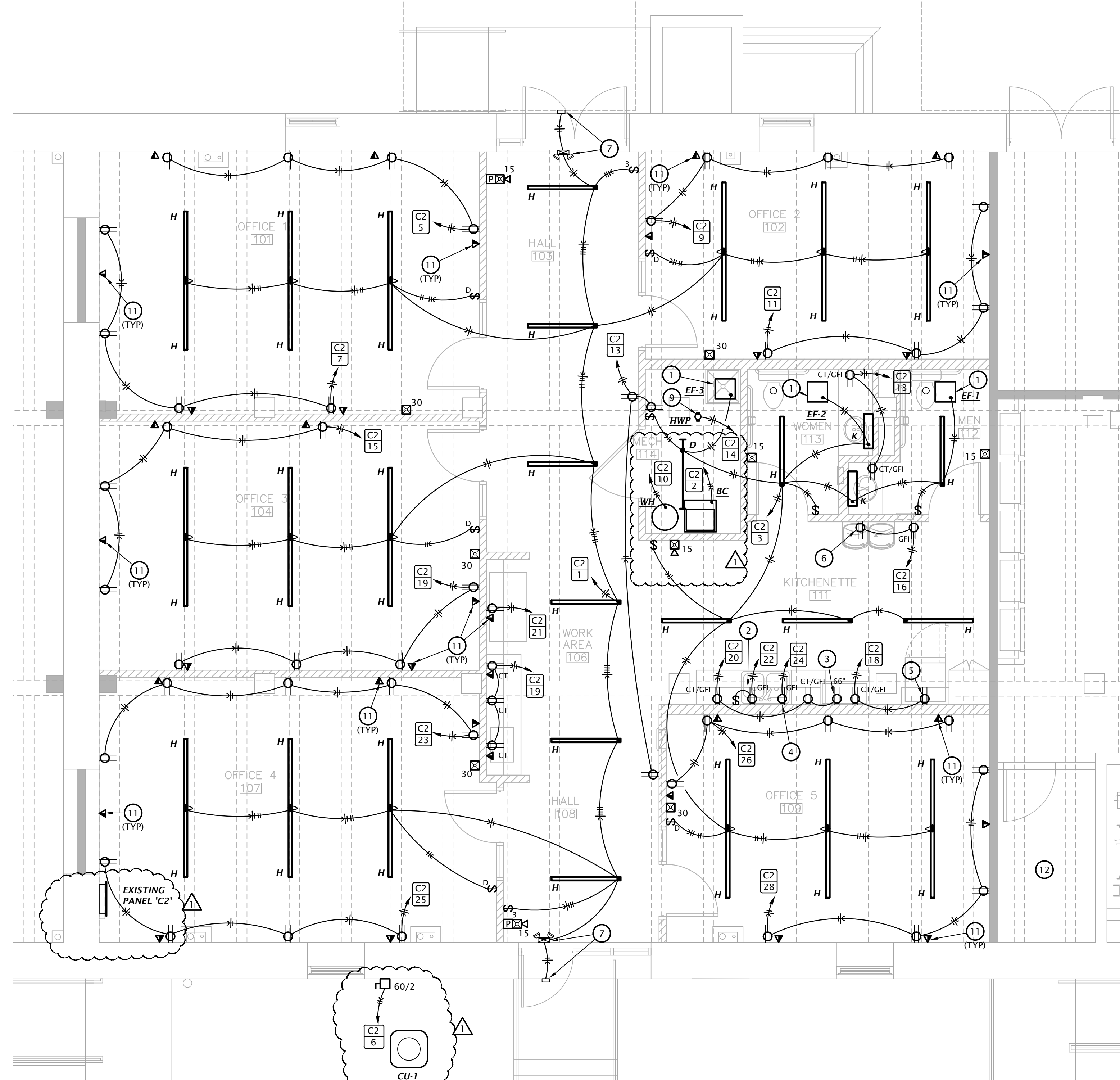
- THE CIRCUITING OF ALL DEVICES HAS BEEN SHOWN ON THE PLANS, AND THE CONTRACTOR SHALL FOLLOW THIS CIRCUITING LAYOUT.
- VERIFY EXACT LOCATIONS OF HVAC AND PLUMBING EQUIPMENT WITH THE GENERAL CONTRACTOR AND ASSOCIATED SUB CONTRACTORS. COORDINATE CONDUIT STUB-UP AND POWER CONNECTIONS PRIOR TO COMMENCING ROUGH-IN WORK. ELECTRICAL DEVICES (DISCONNECTS, RECEPTACLES, ETC.) INSTALLED ON EQUIPMENT SHALL BE MOUNTED ON A NON-REMOVABLE PANEL OF THE EQUIPMENT. FIELD COORDINATE EXACT DEVICE MOUNTING LOCATIONS PRIOR TO INSTALLATION.
- WALL MOUNTED HVAC CONTROL DEVICES (THERMOSTATS, TEMPERATURE SENSORS, HUMIDISTATS, CO₂ SENSORS, ETC) SHALL BE PROVIDED BY MECHANICAL CONTRACTOR. UNLESS NOTED OTHERWISE, ELECTRICAL CONTRACTOR SHALL PROVIDE SINGLE GANG WALL BOX AT 46" AFF AND 1/2" CONDUIT STUBBED OUT TO ABOVE ACCESSIBLE CEILING WITH NYLON BUSHINGS AND PULLSTRING IN RACEWAY. REFER TO MECHANICAL DRAWINGS FOR LOCATIONS OF DEVICES.

ELECTRICAL PLAN NOTES BY SYMBOL

- CONNECT EXHAUST FAN PROVIDED BY MECHANICAL CONTRACTOR. FIELD COORDINATE EXACT MOUNTING LOCATION. SWITCH FAN WITH ROOM LIGHT.
- SWITCHED RECEPTACLE BELOW COUNTER FOR GARBAGE DISPOSAL.
- PROVIDE RECEPTACLE IN UPPER CABINET FOR HOOD/MICROWAVE. WIRE FROM LOAD SIDE OF ADJACENT GFI RECEPTACLE TO PROVIDE GFI PROTECTION.
- PROVIDE RECEPTACLE BELOW COUNTER FOR CORD AND PLUG CONNECTION OF DISHWASHER. PROVIDE CORD AND GROUNDING PLUG AS REQUIRED.
- WIRE RECEPTACLE FOR REFRIGERATOR FROM LOAD SIDE OF ADJACENT GFI RECEPTACLE TO PROVIDE GFI PROTECTION.
- COORDINATE EXACT MOUNTING LOCATION OF DRINKING FOUNTAIN RECEPTACLE WITH PLUMBING CONTRACTOR. WIRE FROM LOAD SIDE OF ADJACENT GFI RECEPTACLE TO PROVIDE GFI PROTECTION FOR DRINKING FOUNTAIN RECEPTACLE.
- CONNECT EXISTING EMERGENCY LIGHT/ EXIT SIGN TO UNSWITCHED CIRCUIT SERVING LIGHTING IN THIS AREA. MODIFY EXISTING CIRCUITRY AS REQUIRED.
- NOTE NOT USED.
- ROUTE 120V CIRCUIT FOR HOT WATER RECIRCULATION PUMP (HWP) THROUGH ADJACENT AQUASTAT. MAKE FINAL FLEXIBLE CONNECTION. COORDINATE WITH PLUMBING CONTRACTOR.
- PROVIDE JUNCTION BOX WITH 120V CIRCUIT FOR FUTURE SIGNAGE/SHOW WINDOW LIGHTING BY OTHERS. ROUTE CIRCUITRY TO PANEL INDICATED. CONCEALED BELOW FLOOR ABOVE. COORDINATE FINAL LOCATION AND ROUTING OF BRANCH CIRCUITRY WITH FIELD CONDITIONS.
- 1-1/4" EMT CONDUIT HOMERUN TO IT ROOM 144. COMBINE NO MORE THAN 3 WALL BOXES TO A SINGLE HOMERUN U.N.O. CONDUITS SERVING ONE WALL BOX SHALL BE 1", ALL OTHERS SHALL BE 1-1/4". PROVIDE A DEDICATED PULL STRUNG FROM EACH WALL BOX TO IT BACK BOARD.
- EXISTING MAIN TELECOMMUNICATIONS ROOM - IT ROOM 144.



2 COMMERCIAL SPACE #2 ELECTRICAL DEMO PLAN
 1/4" = 1'-0"



1 COMMERCIAL SPACE #2 ELECTRICAL PLAN
 1/4" = 1'-0"

Professional Engineer Seal
 14654
 Sept. 2022
 KANSAS PROFESSIONAL ENGINEER

REVISION:
 Δ AS1 #1 10-14-2024
 DATE: 9-13-2024
 JOB: 24-3420
 SHEET NO.:

E1.1
 COPYRIGHTED