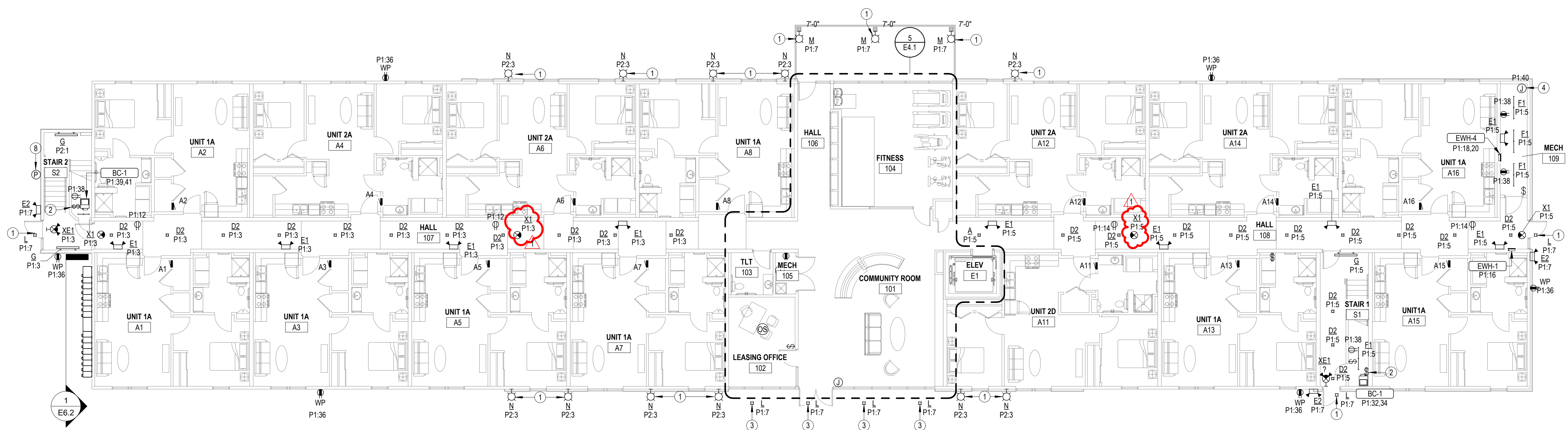


- NOTES BY SYMBOL**
- 1 ROUTE CIRCUIT THROUGH CONTACTOR INDICATED ON DETAIL 2.E6.1
  - 2 PROVIDE 30A/2P, SINGLE THROW, MANUAL MOTOR CONTROLLER SNAP SWITCH IN NEMA 1 ENCLOSURE, HUBBELL #HBL7832D OR EQUAL. MAKE FINAL FLEXIBLE CONNECTION TO BLOWER COILELECTRIC HEAT.
  - 3 CONNECT FIXTURE TO LIGHTING INVERTER IN MECH 105 FOR EMERGENCY OPERATION.
  - 4 120V POWER FOR FIRE SPRINKLER SYSTEM FLOW SWITCH(ES) AND BELL. PROVIDE #8 CU BONDING JUMPER FROM CIRCUIT EQUIPMENT GROUNDING CONDUCTOR TO METAL SPRINKLER SYSTEM PIPING AT AN ACCESSIBLE LOCATION PER NEC 250.104(B). COORDINATE WORK WITH FIRE SPRINKLER SYSTEM INSTALLER.
  - 5 PROVIDE 120V POWER CONNECTION TO ELEVATOR SUMP PUMP ALARM PANEL AND 1" CONDUIT WITH PULL STRING STUBBED INTO ELEVATOR PIT FOR CONTROL CABLING. COORDINATE ALL WORK WITH PLUMBING CONTRACTOR.
  - 6 PROVIDE 50A/2P, SINGLE THROW, MANUAL MOTOR CONTROLLER SNAP SWITCH IN NEMA 1 ENCLOSURE, HUBBELL #HBL7832D OR EQUAL. MAKE FINAL FLEXIBLE CONNECTION TO BLOWER COILELECTRIC HEAT.
  - 7 TIMECLOCK AND CONTACTORS FOR EXTERIOR LIGHTING AND OFFICE RECEPTACLE CONTROL, RE: 2.E6.1.
  - 8 PHOTOCELL FOR CONTROL OF EXTERIOR LIGHTS. SEE 2.E6.1 FOR MORE INFORMATION.

2 SECOND FLOOR ELECTRICAL PLAN  
 E1.1 3/32" = 1'-0"

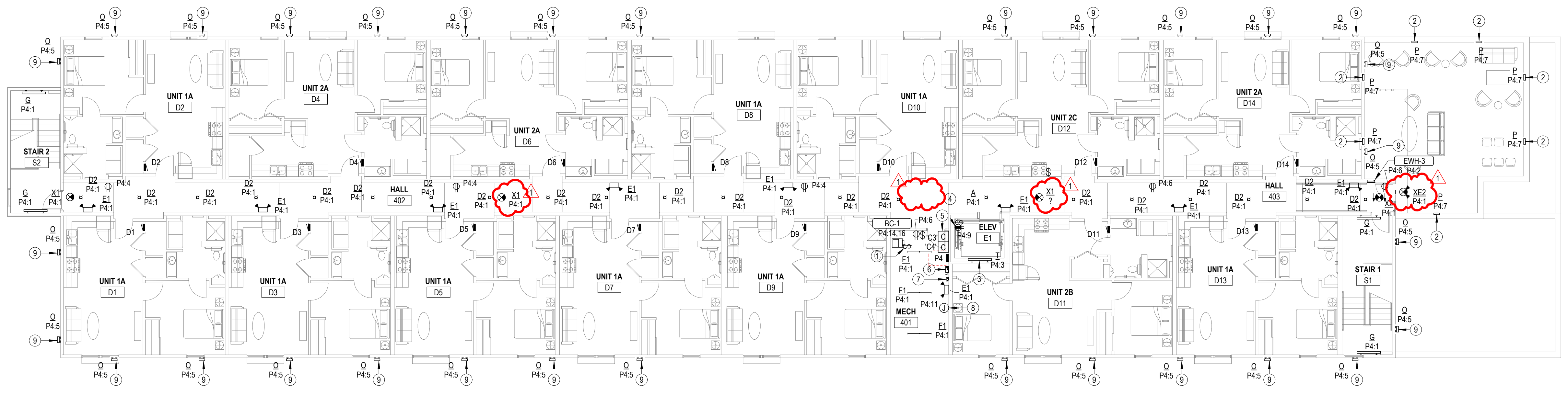


1 FIRST FLOOR ELECTRICAL PLAN  
 E1.1 3/32" = 1'-0"

REVISIONS:

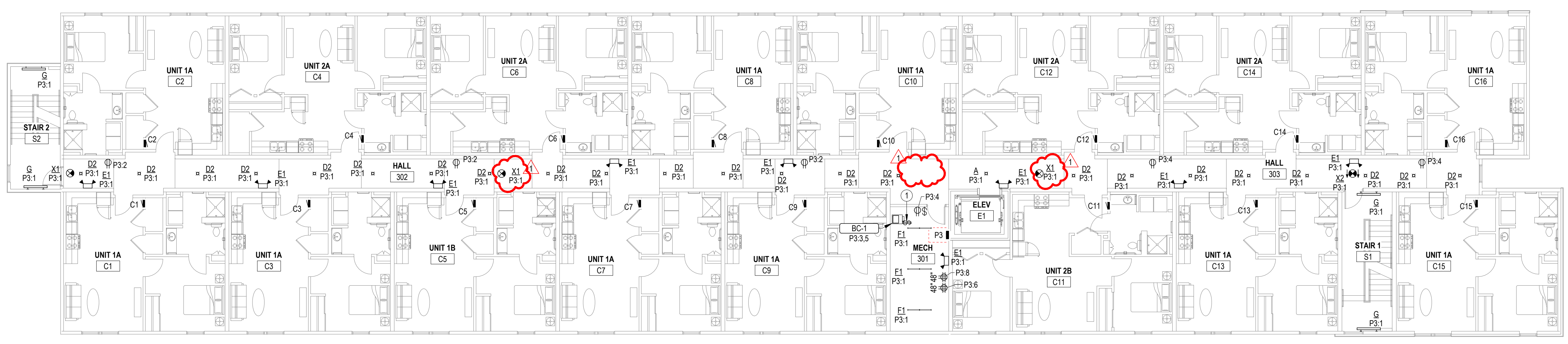
1	Addendum #1	03-04-2025
---	-------------	------------

DATE: 01-10-2025  
 JOB: 24-3379  
 SHEET NO.:



- NOTES BY SYMBOL**
- 1 PROVIDE 30A/2P, SINGLE THROW, MANUAL MOTOR CONTROLLER SNAP SWITCH IN NEMA 1 ENCLOSURE, HUBBELL #HBL7832D OR EQUAL. MAKE FINAL FLEXIBLE CONNECTION TO BLOWER COIL/ELECTRIC HEAT.
  - 2 INSTALL FIXTURE APPROXIMATELY 24" ABOVE ROOFTOP DECKING SYSTEM. COORDINATE EXACT LOCATION WITH PARAPET FRAMING.
  - 3 INSTALL LIGHT FIXTURE, SWITCH, AND RECEPTACLE AT TOP OF HOISTWAY. VERIFY EXACT MOUNTING LOCATION AND REQUIREMENTS WITH ELEVATOR INSTALLER.
  - 4 INSTALL RECEPTACLE ON WALL OF ELEVATOR HOISTWAY. VERIFY EXACT LOCATION WITH ELEVATOR EQUIPMENT INSTALLER.
  - 5 TIMELOCK AND CONTACTORS FOR EXTERIOR LIGHTING AND OFFICE RECEPTACLE CONTROL. RE: 2.E6.1.
  - 6 ELEVATOR POWER MODULE SWITCH: 60A/208V/3P SWITCH COMPLETE WITH 60A DUAL ELEMENT, TIME DELAY CLASS J FUSES, 120V CONTROL TRANSFORMER, FIRE ALARM SAFETY INTERFACE RELAY, KEY TEST SWITCH, GREEN PILOT LIGHT, AUXILIARY CONTACTS FOR ELEVATOR RECALL, AND FIRE ALARM VOLTAGE MONITORING RELAY. EATON BUSSMAN #PS-6-T20-R1-K-G-B-F1 OR EQUAL. COORDINATE EXACT MOUNTING LOCATION AND REQUIREMENTS WITH ELEVATOR EQUIPMENT INSTALLER. AND PROVIDE FINAL ELECTRICAL CONNECTION TO ELEVATOR CONTROLLER. SEE DETAIL 1.E6.1.
  - 7 30A DISCONNECT SWITCH, LOCKABLE IN "OFF" POSITION, WITH SOLID NEUTRAL AND (1) 20A DUAL-ELEMENT, TIME DELAY FUSE IN NEMA 1 ENCLOSURE FOR ELEVATOR CAB LIGHTS & EXHAUST. MOUNT AT 6'-0" AFF TO TOP AND LABEL WITH CORRESPONDING ELEVATOR CAR NUMBER AND CIRCUIT NUMBER. COORDINATE EXACT MOUNTING LOCATION AND REQUIREMENTS WITH ELEVATOR EQUIPMENT INSTALLER. PROVIDE FINAL ELECTRICAL CONNECTION TO ELEVATOR CONTROLLER.
  - 8 PROVIDE POWER FOR ELEVATOR SHUNT TRIP CONTROL. SEE 1.E6.1 FOR MORE INFORMATION.
  - 9 ROUTE CIRCUIT THROUGH CONTACTOR INDICATED ON DETAIL 2.E6.1.

2 FOURTH FLOOR ELECTRICAL PLAN  
 3/32" = 1'-0"  
 0 8' 16' 24'



1 THIRD FLOOR ELECTRICAL PLAN  
 3/32" = 1'-0"  
 0 8' 16' 24'

REVISIONS:

1	Addendum #1	03-04-2025
---	-------------	------------

DATE: 01-10-2025  
 JOB: 24-3379  
 SHEET NO.:

LIGHT FIXTURE SCHEDULE

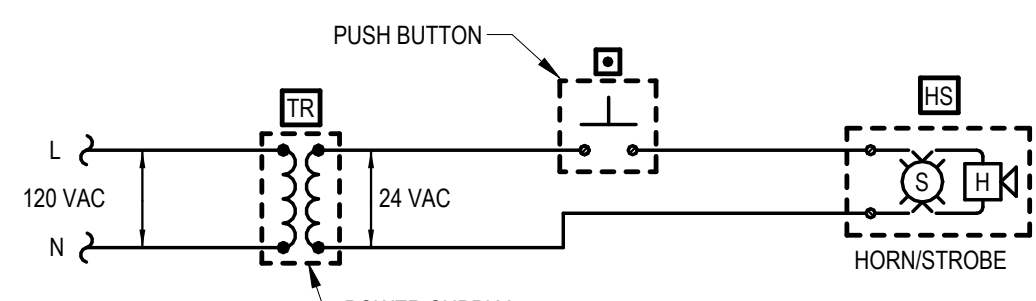
MARK	MANUFACTURER	MODEL NUMBER	WATTAGE	LUMEN OUTPUT	DRIVER	MOUNTING	FINISH	DESCRIPTION	NOTES
A	---	---	---	---	STANDARD	CEILING SURFACE	---	SURFACE MOUNTED DOWNLIGHT SELECTED BY INTERIOR DESIGNER	13
B	---	---	29 W	---	STANDARD	SURFACE WALL	---	VANITY LIGHT SELECTED BY INTERIOR DESIGNER	13
C	T-BAR LED	TBSL-MN-5-15-B2-B	40 W	2190 lm	0-10V DIMMING TO 10%	CEILING SURFACE	BLACK	5' T-BAR LED WITH BLOCK CLEAR DIFFUSING LENS INTEGRAL TO SUSPENDED CEILING	13
CE	T-BAR LED	TBSL-MN-5-15-B2-B	40 W	2190 lm	0-10V DIMMING TO 10%	CEILING SURFACE	BLACK	5' T-BAR LED WITH BLOCK CLEAR DIFFUSING LENS INTEGRAL TO SUSPENDED CEILING WITH EMERGENCY BATTERY BACKUP OPTION	13
D1	HALO	SMD6R6930WH	10 W	750 lm	0-10V DIMMING TO 10%	CEILING SURFACE	WHITE	6" DIA ROUND SURFACE MOUNT DOWNLIGHT	6
D2	HALO	SMD6R12930WH	15 W	1200 lm	0-10V DIMMING TO 10%	CEILING SURFACE	WHITE	6" DIA ROUND SURFACE MOUNT DOWNLIGHT	---
E1	LITHONIA	ELM6L UVOLT LTP	3 W	---	---	SURFACE WALL	WHITE	LED DUAL-HEAD EMERGENCY LIGHT	1,2
E2	LITHONIA	AFB-OEL-DOBTD-X-UVOL-T-N-WT	3 W	---	---	SURFACE WALL	WHITE	DIE-CAST ALUMINUM EMERGENCY LIGHT WITH POLYCARBONATE LENS, INTEGRAL BATTERY	1,2,3
F1	DAY-BRITE CFI	FSS440L840-UNV-DIM	30 W	4077 lm	0-10V DIMMING TO 10%	CEILING SURFACE	WHITE	4' STANDARD STRIP WITH CURVED FROSTED ACRYLIC LENS	---
F2	DAY-BRITE CFI	FSS220L840-UNV-DIM	17 W	2049 lm	0-10V DIMMING TO 10%	CEILING SURFACE	WHITE	2' STANDARD STRIP WITH CURVED FROSTED ACRYLIC LENS	---
G	LITHONIA	WL4-40L-EZ1-LP830-MSD7-DIM50-E10WLC-P	40 W	3927 lm	STANDARD	SURFACE WALL	WHITE	4 FT. WALL MOUNTED STAIRWELL LIGHT WITH EMERGENCY BATTERY BACKUP	8
H	LITHONIA	FMFL4W-48-AL06-SEF-840-MVOLT	50 W	4000 lm	STANDARD	SURFACE	WHITE	LED WRAPAROUND	---
J	---	---	---	---	STANDARD	SURFACE WALL	WHITE	VERTICAL VANITY LIGHT SELECTED BY INTERIOR DESIGNER	13
L	LIGHTOLIER	P6RDL15940MCL-Z10UJ	12 W	1500 lm	STANDARD	SURFACE	WHITE	6" ROUND SURFACE MOUNTED DOWNLIGHT	1,4
M	GARDCO	GCS-A01-840-T3M-UNV	10 W	1500 lm	STANDARD	SURFACE WALL	WHITE	AREA WALL SCONCE WITH TYPE 3 IES DISTRIBUTION	17
N	GARDCO	GCM-B04-840-SPT-U-SPT-UNV-FAWS	16 W	1611 lm	STANDARD	SURFACE WALL	WHITE	UP/DOWN WALL SCONCE WITH SPOT DISTRIBUTION	14,16
O	BOCA	NANO-X-3W-4000K-120V-120-A-H-ELD-SQ	3 W	573 lm	STANDARD	SURFACE WALL	WHITE	1" LED 120" WALL WASH UP LIGHT	3,15
P	GARDCO	941L-21L-NW-LV-UNV	32 W	466 lm	STANDARD	SURFACE WALL	WHITE	LED STEP LIGHTS	3
R1	COOPER LIGHTING	GALN-SA1C-840-U-T2-HSS	57 W	7154 lm	LED DRIVER	ROUND POLE	BLACK	LED AREA LIGHT, SINGLE HEAD FULL CUT-OFF WITH IES TYPE II DISTRIBUTION AND HOUSE SIDE SHIELD	3,7,10
R2	COOPER LIGHTING	GALN-SA3C-840-U-T3-HSS	160 W	20812 lm	LED DRIVER	ROUND POLE	BLACK	LED AREA LIGHT, SINGLE HEAD FULL CUT-OFF WITH IES TYPE III DISTRIBUTION AND HOUSE SIDE SHIELD	3,7,11
R3	COOPER LIGHTING	GALN-SA3C-840-U-5WQ	160 W	21966 lm	LED DRIVER	ROUND POLE	BLACK	LED AREA LIGHT, SINGLE HEAD FULL CUT-OFF WITH IES TYPE V DISTRIBUTION	3,7,12
S	ACCLAIM	DFB-111-AKEU	50 W	2455 lm	STANDARD	GRADE	BLACK	IP-66 RATED, GRADE MOUNTED LED FLOOR LIGHT	---
T	LITHONIA	FEM-L48-4000LM-MAFL-WD-MVOLT-GZ10	24 W	3615 lm	STANDARD	SURFACE WALL	WHITE	4 FT. FULLY ENCLOSED AND GASKETED INDUSTRIAL FIXTURE WITH FROSTED, ANTI-GLARE PROTECTIVE LENS	---
X1	LITHONIA	EDGR 1 R EL	---	---	---	CEILING	WHITE	RECESSED SINGLE FACE LED EXIT SIGN	1,2
X2	LITHONIA	EDGR 2 R EL	---	---	---	CEILING	WHITE	RECESSED DOUBLE FACE POLYCARBONATE EXIT SIGN	1,2
XE1	LITHONIA	LHQM LED R HO	---	---	---	WALL	WHITE	COMBO EXIT/EMERGENCY LIGHTING UNIT	1,2
XE2	LITHONIA	WLTCT1RSDCW	---	---	---	WALL	WHITE	EXTERIOR RATED COMBINATION EXIT/EMERGENCY LIGHT	1,2

**GENERAL:**

- ALL LED FIXTURES SHALL ADHERE TO LM79 AND LM80 STANDARDS
- PROVIDE MANUFACTURER'S FLANGE KIT WHERE LAY-IN FIXTURES ARE TO BE INSTALLED IN GYP.
- ALL APARTMENT LIGHT FIXTURES SHALL BE ENERGY STAR CERTIFIED

**NOTES:**

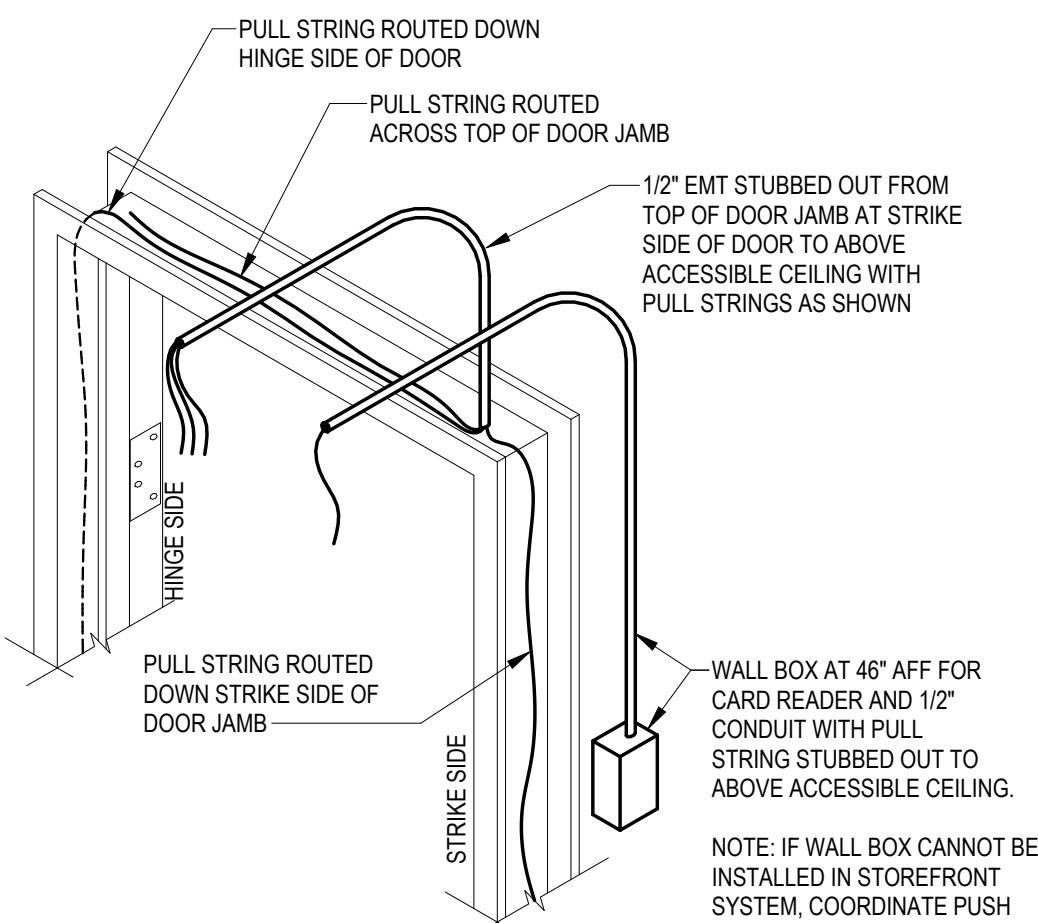
- PROVIDE FIXTURE WITH EMERGENCY BATTERY INTEGRAL CHARGER WITH SELF-DIAGNOSTIC/SELF-TESTING ELECTRONICS.
- FIXTURE SHALL BE CAPABLE OF WALL OR CEILING MOUNT APPLICATIONS AND SHALL HAVE BREAK-OUT DIRECTIONAL CHEVRONS.
- U.L. LISTED FOR 'WET LOCATION'.
- U.L. LISTED FOR 'DAMP LOCATION'.
- FIXTURE TO COMPLY WITH NEC 410.16(C)(5).
- WHERE INSTALLED IN BATHROOMS TO BE 'DAMP LOCATION' U.L. LISTED, WHERE ABOVE SHOWERS TO BE 'WET LOCATION' U.L. LISTED.
- FIXTURE/POLE ASSEMBLY SHALL BE RATED FOR 100 MPH WIND LOADS. PROVIDE WITH VIBRATION DAMPER PER MANUFACTURER'S RECOMMENDATIONS.
- PROVIDE FIXTURE WITH INTEGRAL OCCUPANCY SENSOR AND CONTROLS TO DIM FIXTURE TO 50% LIGHT OUTPUT WITH UNOCCUPIED.
- WHERE INSTALLED IN FIRE RATED ASSEMBLY, PROVIDE FIRE RATED RECESSED LIGHT COVER EQUAL TO TENMAT FF109. VERIFY RATING REQUIREMENTS WITH ARCHITECT.
- PROVIDE FIXTURE/POLE ASSEMBLY WITH 11" ROUND STRAIGHT STEEL POLE, BLACK TO MATCH FIXTURE.
- PROVIDE FIXTURE/POLE ASSEMBLY WITH 14" ROUND STRAIGHT STEEL POLE, BLACK TO MATCH FIXTURE.
- PROVIDE FIXTURE/POLE ASSEMBLY WITH 22" ROUND STRAIGHT STEEL POLE, BLACK TO MATCH FIXTURE.
- FIXTURE TO BE SELECTED BY INTERIOR DESIGNER. COORDINATE ALL REQUIREMENTS WITH INTERIOR DESIGNER.
- CONTRACTOR SHALL ADJUST LUMEN OUTPUT AS DIRECTED BY OWNER. COORDINATION SHALL OCCUR AFTER DARK TO ENSURE DESIRED ILLUMINATION.
- INSTALL FIXTURE 10' ABOVE FINISHED FLOOR.
- INSTALL FIXTURE 7' ABOVE FINISHED FLOOR.



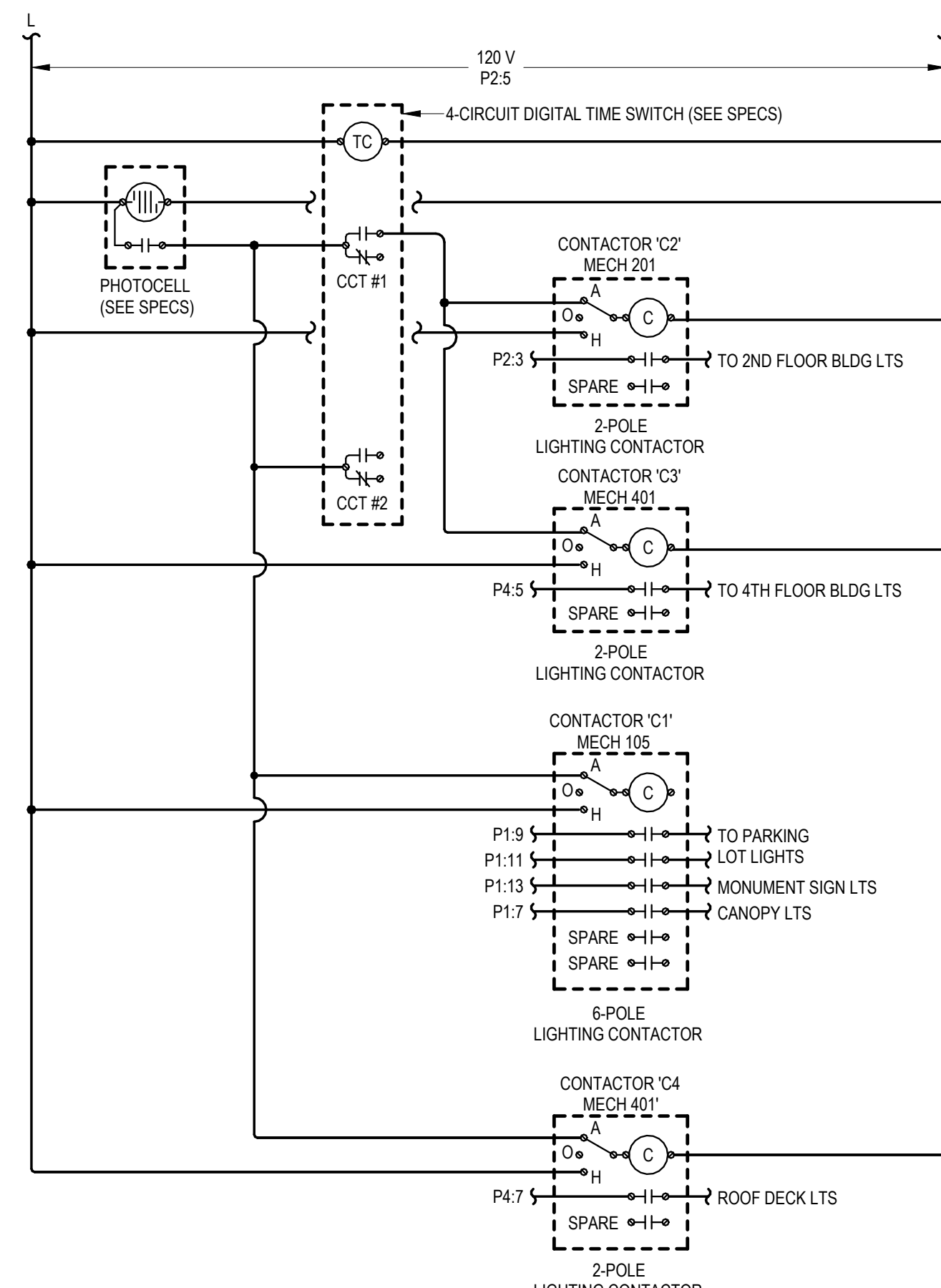
**DOOR ALARM BUZZER SYSTEM NOTES**

- PROVIDE DOOR ANNUNCIATOR SYSTEM COMPLETE WITH PUSH BUTTON, HORN/STROBE(S), POWER SUPPLIES AND ALL WIRING REQUIRED. HORN/STROBE SHALL ACTIVATE WHEN PUSH BUTTON IS DEPRESSED.
- HORN/STROBE SHALL OPERATE AT 24VAC. HAVE A CLEAR LENS WITH 50cd STROBE AND HORN WITH 82db AT 10', UL 1638 LISTED, EDWARDS #6536-G5. FLUSH MOUNT IN WALL AT 6'-8" AFF.
- PUSH BUTTON SHALL BE SELECTED BY INTERIOR DESIGNER, MOUNT AT 48" AFF. ENSURE COMPATIBILITY WITH ACCESSIBLE UNIT HORN STROBE.
- POWER SUPPLY SHALL BE A LOW VOLTAGE CLASS 2 TRANSFORMER COMPATIBLE WITH DOORBELL SELECTED BY INTERIOR DESIGNER. FLUSH MOUNT IN 2-GANG WALL BOX WITH BLANK COVER PLATE, DIRECTLY ABOVE HORN/STROBE.
- LOW VOLTAGE CLASS 2 CABLING SHALL BE MINIMUM 18 AWG UNSHIELDED.

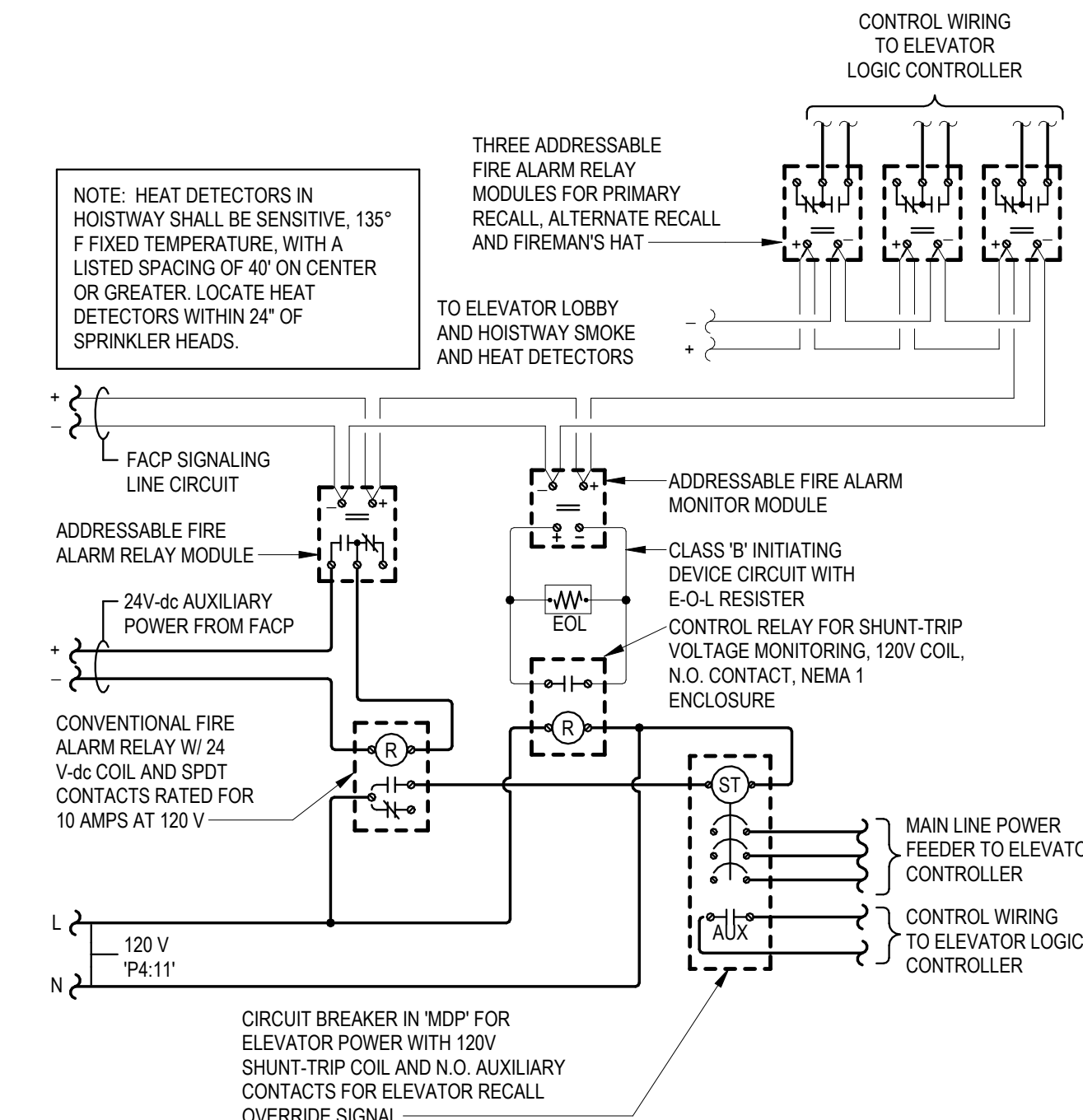
4 ACCESSIBLE APARTMENT DOORBELL WIRING SCHEMATIC  
E6.1 NO SCALE



3 DOOR ACCESS CONTROL ROUGH-IN DIAGRAM  
E6.1 NO SCALE



2 LIGHTING CONTROL DIAGRAM  
E6.1 NO SCALE



**ELEVATOR RECALL AND SHUT-DOWN SEQUENCE OF OPERATION:**

- UPON SENSING SMOKE FROM ONE OR MORE ELEVATOR LOBBY OR HOISTWAY, THE SMOKE DETECTOR SHALL SIGNAL THE FIRE ALARM CONTROL PANEL, WHICH WILL FORWARD THE SIGNAL TO THE ELEVATOR LOGIC CONTROLLER VIA ADDRESSABLE RELAY MODULES TO RECALL ELEVATOR CAB TO THE PRIMARY RECALL FLOOR. IF PRIMARY RECALL FLOOR'S LOBBY SMOKE DETECTOR SENSES SMOKE AT THAT FLOOR, THE ELEVATOR CONTROLLER WILL SEND THE ELEVATOR CAB TO THE NEXT FLOOR CLEAR OF SMOKE. ONCE THE ELEVATOR CAB HAS REACHED THE DESIGNATED FLOOR, THE ELEVATOR CAB DOORS WILL OPEN AND THE CONTROLLER WILL LOCK THE ELEVATOR CAB AT THAT FLOOR, DISABLING THE ELEVATOR CAB CONTROLS, UNLESS A FIREMAN'S KEY IS USED TO OVERRIDE AUTOMATIC CONTROLS.
- ALL SMOKE DETECTORS ASSOCIATED WITH ELEVATOR RECALL (LOBBY AND HOISTWAY) SHALL TRANSMIT A SEPARATE AND DISTINCT VISIBLE ANNUNCIATION AT THE FIRE ALARM CONTROL PANEL.
- UPON SENSING A HEAT ALARM CONDITION IN THE ELEVATOR HOISTWAY, THE HEAT DETECTOR SHALL SIGNAL THE FIRE ALARM CONTROL PANEL, WHICH WILL FORWARD THE SIGNAL TO THE ADDRESSABLE RELAY MODULE TO ACTIVATE (VIA A CONVENTIONAL FIRE ALARM RELAY) THE SHUNT-TRIP BREAKER POWERING THE ELEVATOR SO AS TO DISCONNECT POWER TO THAT CIRCUIT. THIS IS TO BE A NON-AUTO RESET SWITCH. WHEN THE SPRINKLER HEAD HAS REACHED ITS CRITICAL TEMPERATURE OF 165° F., THE HEAD WILL BEGIN DISCHARGE OF WATER.

1 ELEVATOR RECALL AND SHUT-DOWN WIRING DIAGRAM  
E6.1 NO SCALE