



Jones Gillam Renz Architects

Address

730 N 9th St. 1881 Main St., Suite 301
Salina, KS 67401 Kansas City, MO 64108

Contact

jgr@jgrarchitects.com
(785) 827-0386

Web

jgrarchitects.com

ARCHITECT'S SUPPLEMENTAL INSTRUCTIONS

JONES GILLAM RENZ DOCUMENT JGR 710

PROJECT: The Residence at Veterans Park New Senior Development Knoxville, IA Report No. Three (3)

OWNER: OPG Veterans Park Partners, LLC Dan Maximuk 250 N. Santa Fe Ave, Suite A Salina, KS 67401 Date April 22, 2025

CONTRACTOR: Overland Construction Company 250 N. Santa Fe Ave, Suite A Salina, KS 67401 Architect's Proj No. 24-3400 Contract For: General Construction Mechanical, Electrical

The work shall be carried out in accordance with the following supplemental instructions issued in accordance with the Contract Documents without change in Contract Sum or Contract Time. Prior to proceeding in accordance with these instructions, indicate your acceptance of these instructions for minor change to the Work as consistent with the Contract Documents and return a copy to the Architect.

DESCRIPTION:

Contractor to make adjustments as needed and required per the modifications as indicated on attached drawings and in the below descriptions:

1. Community Room 101 – Kitchenette sink to have an open pull-under approach in lieu of a side approach.
 - a. Sheet A9.2 – Elevations B & E have been modified to show an open knee space below the kitchenette sink.
 - b. Sheet A9.3 - Section L has been added for the open knee space below the kitchenette sink.

Attachments:

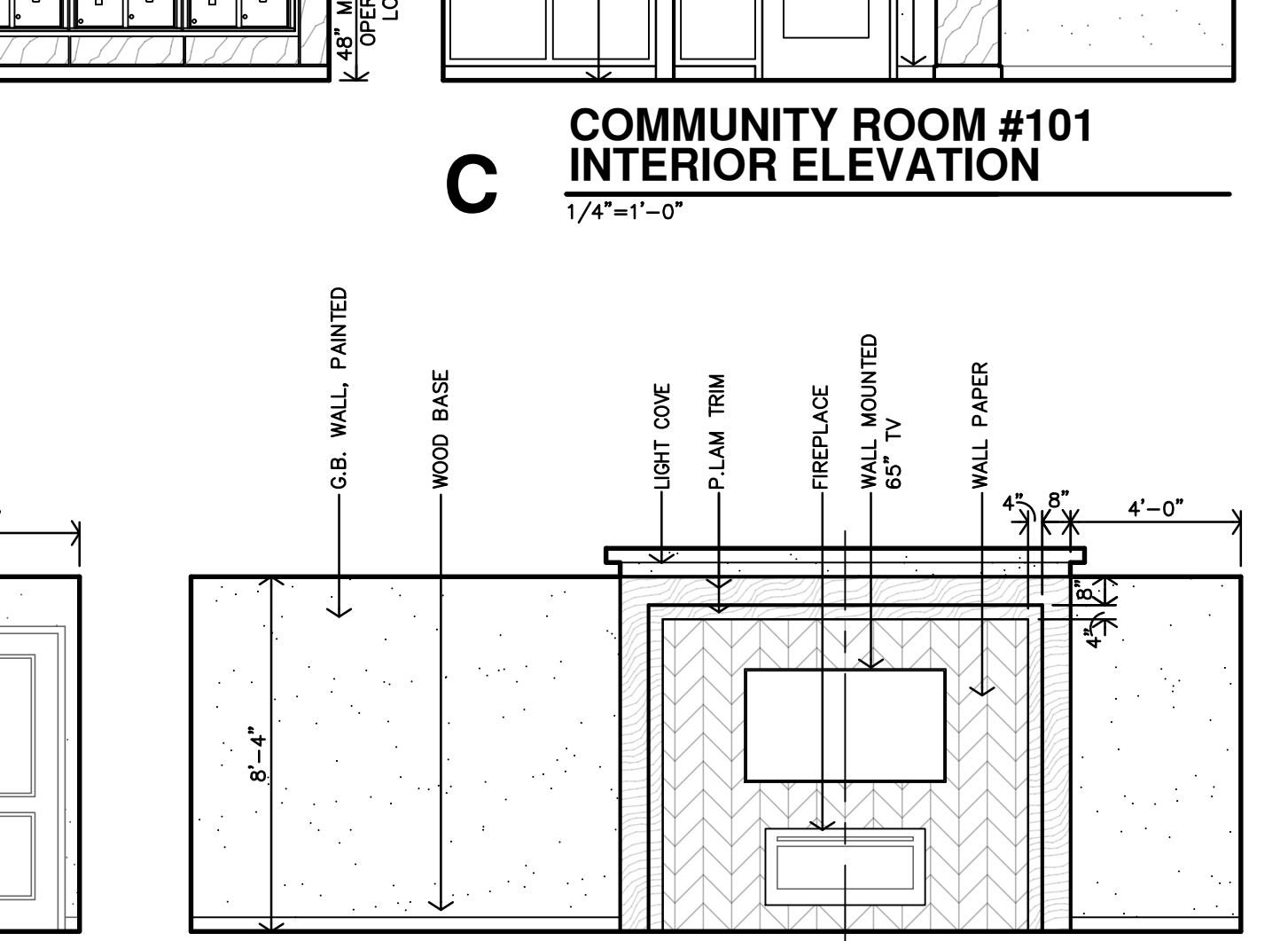
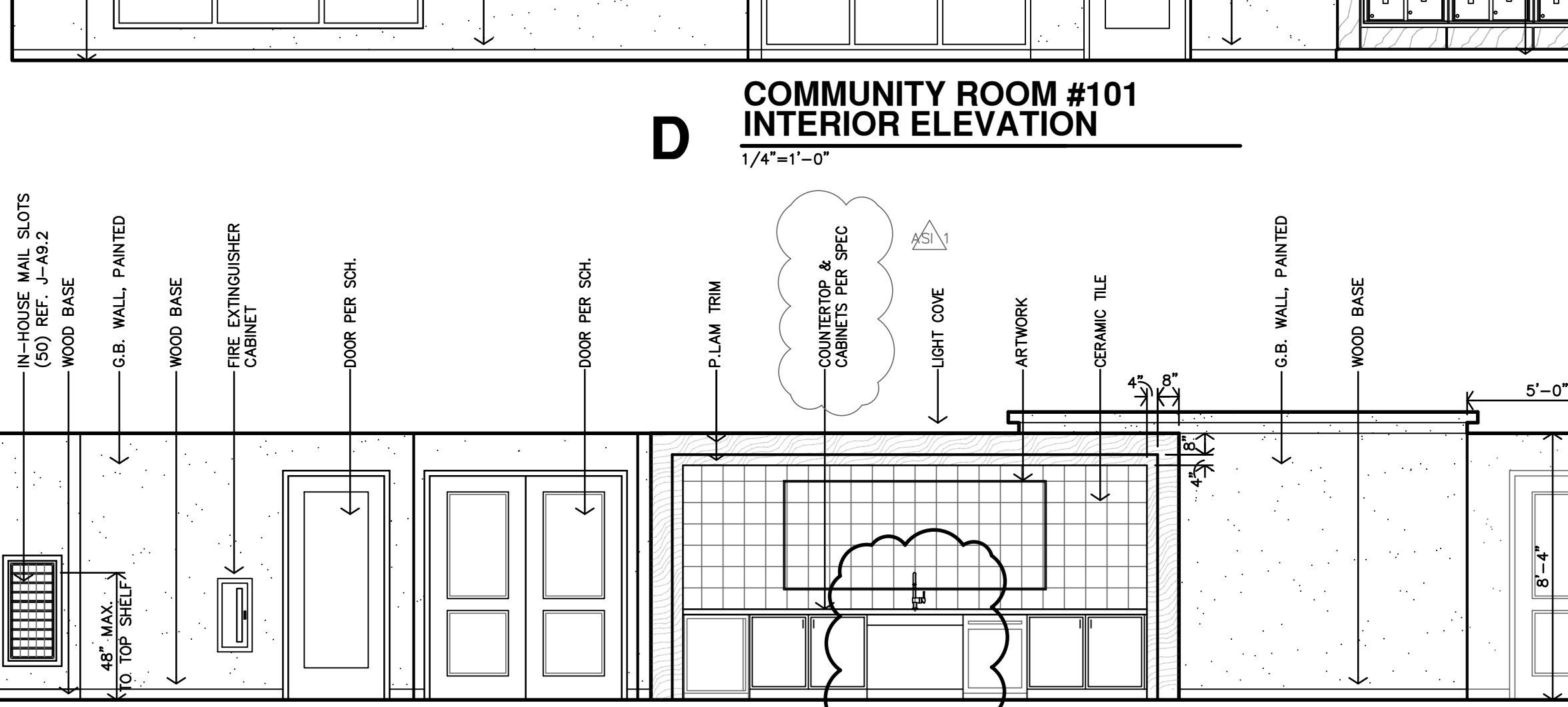
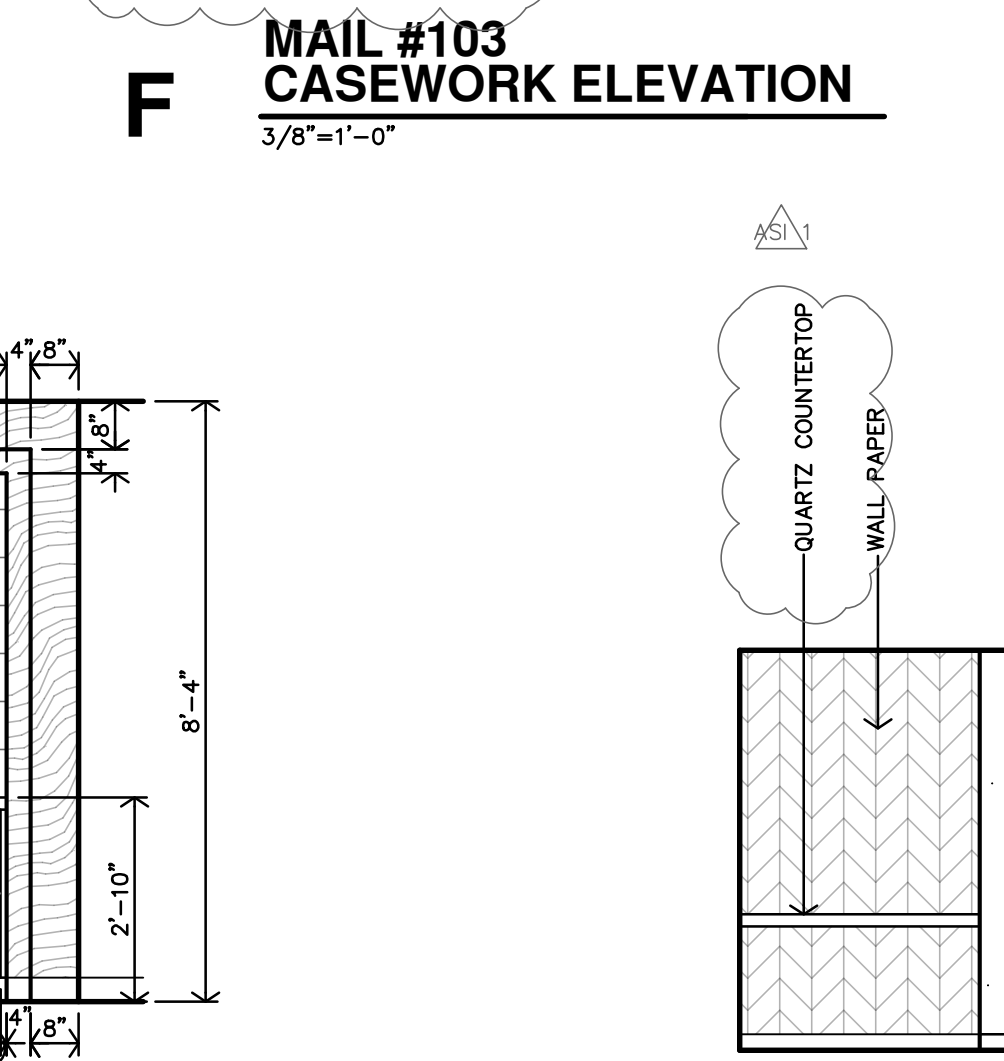
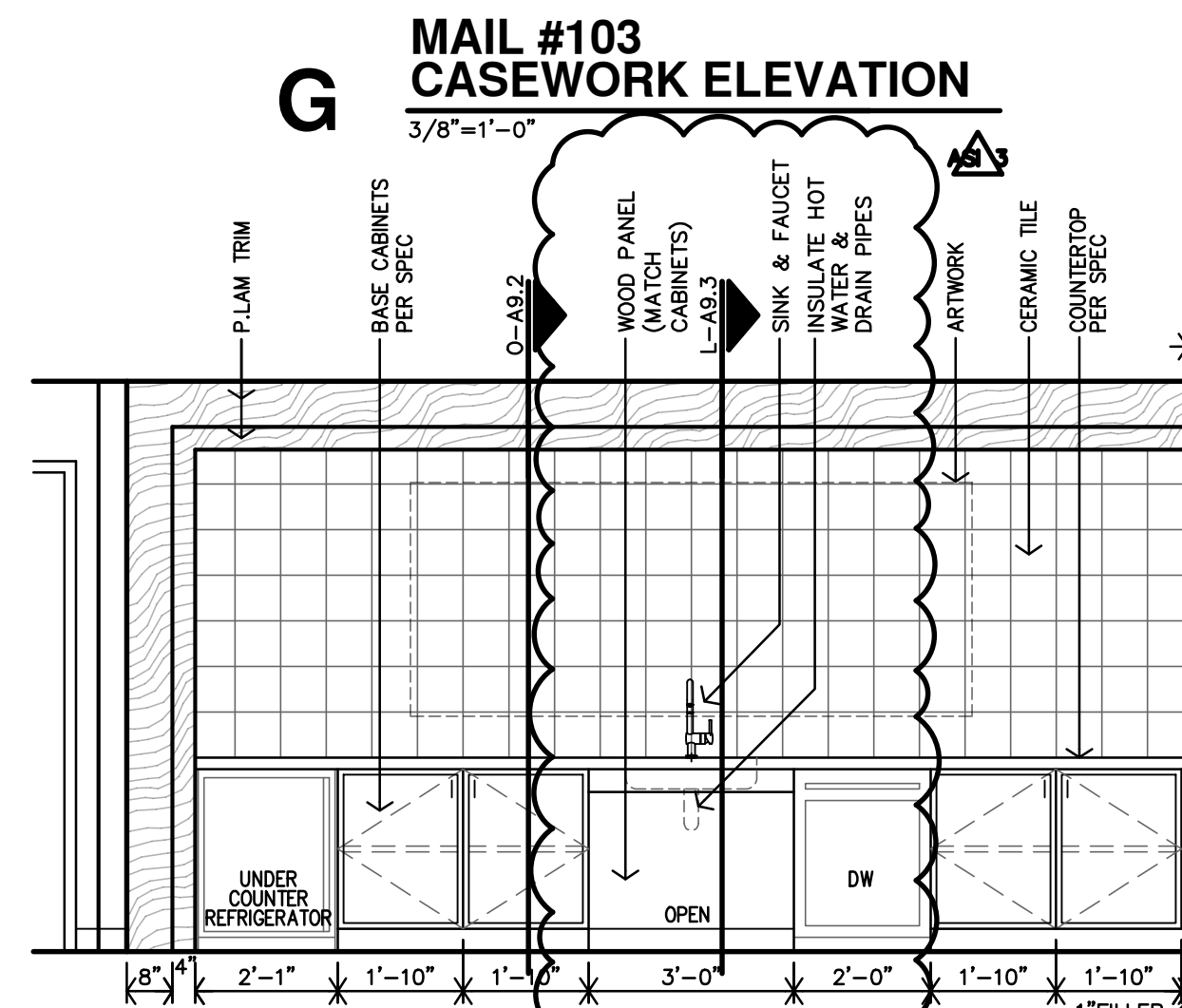
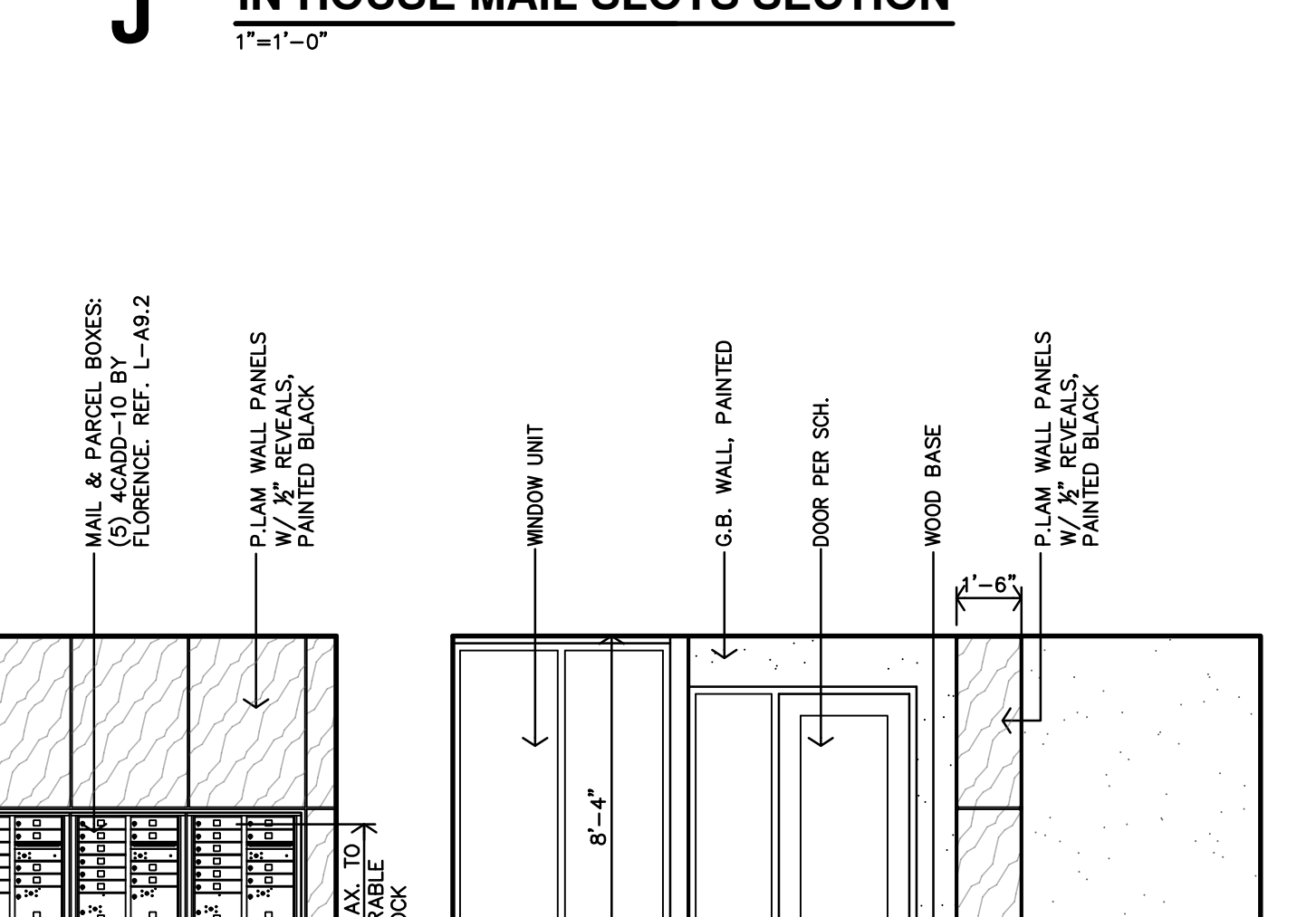
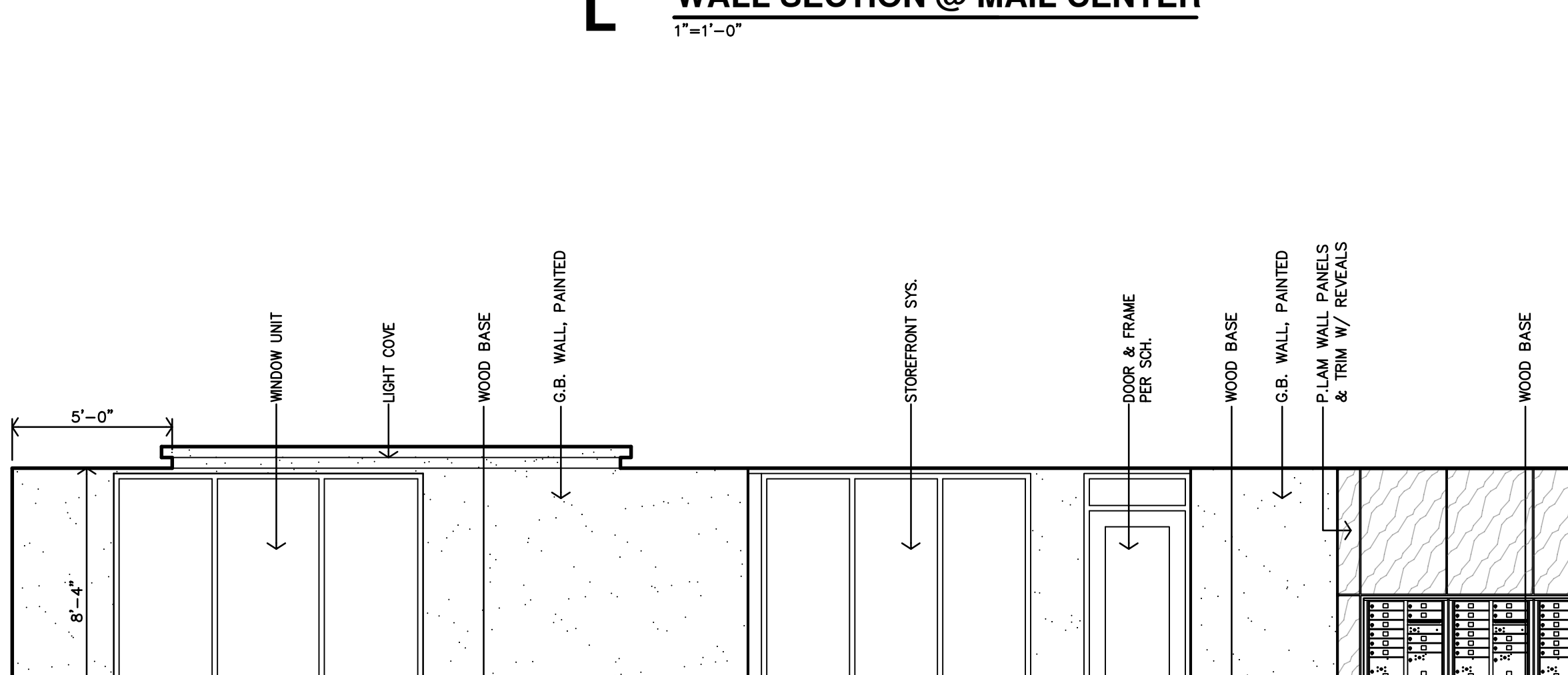
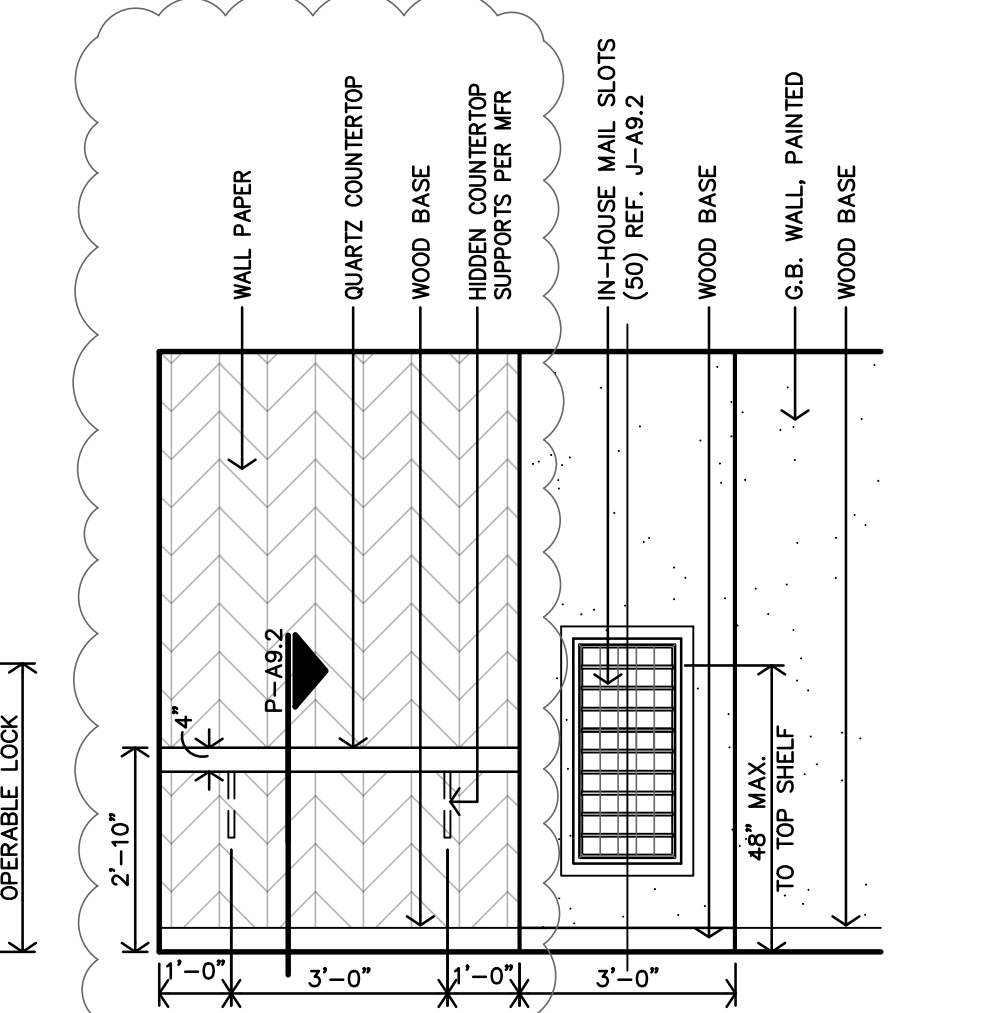
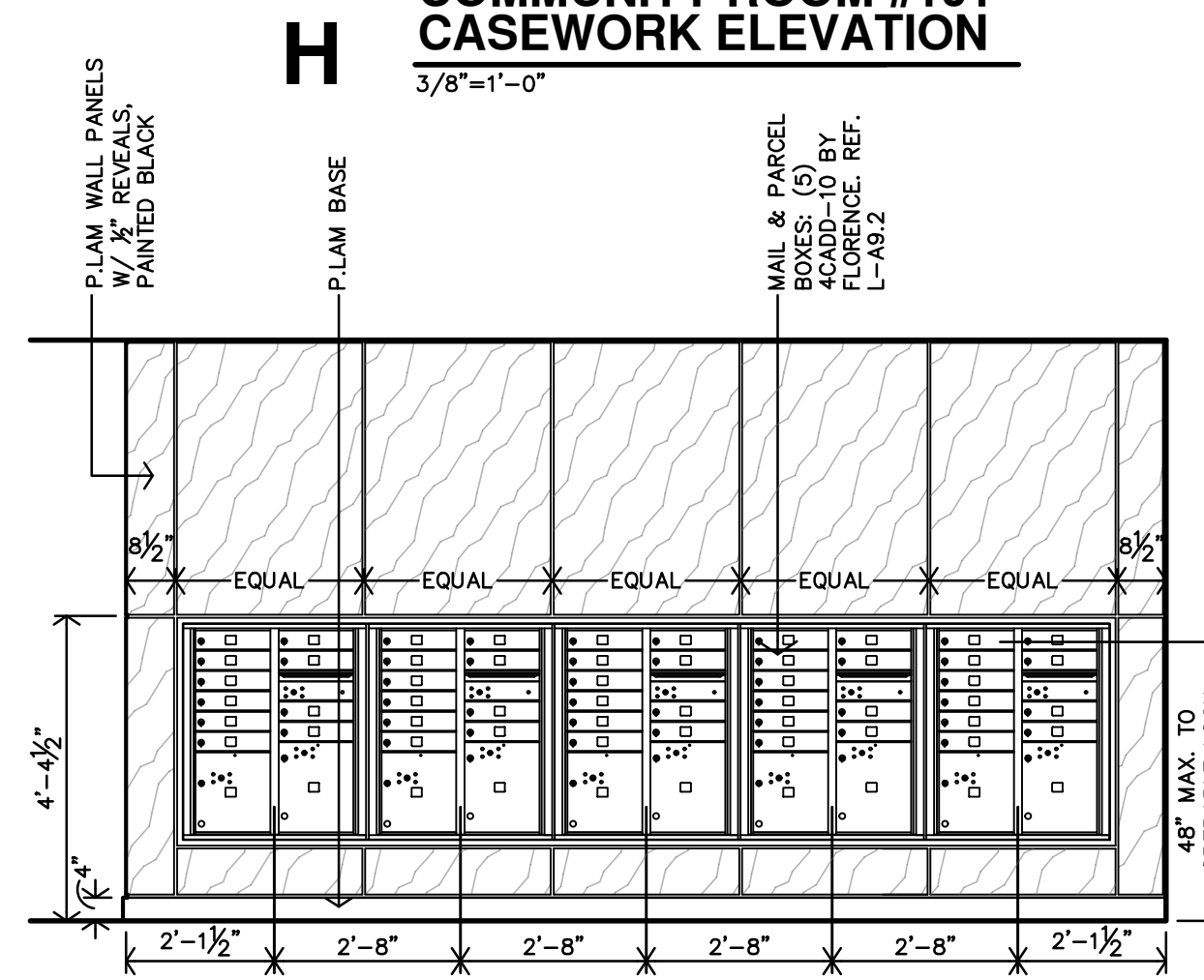
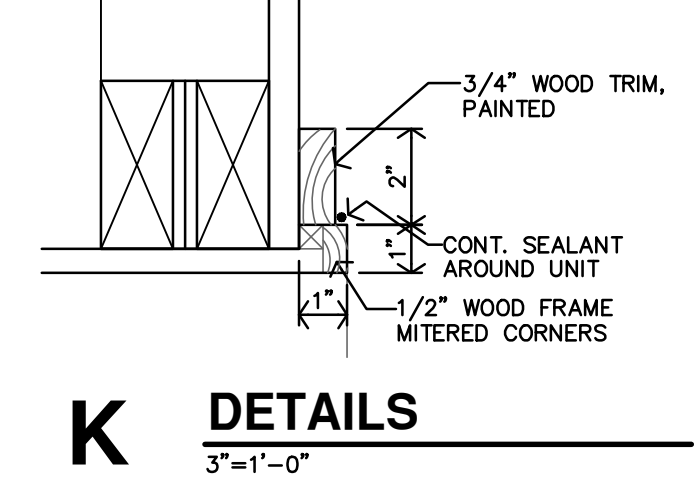
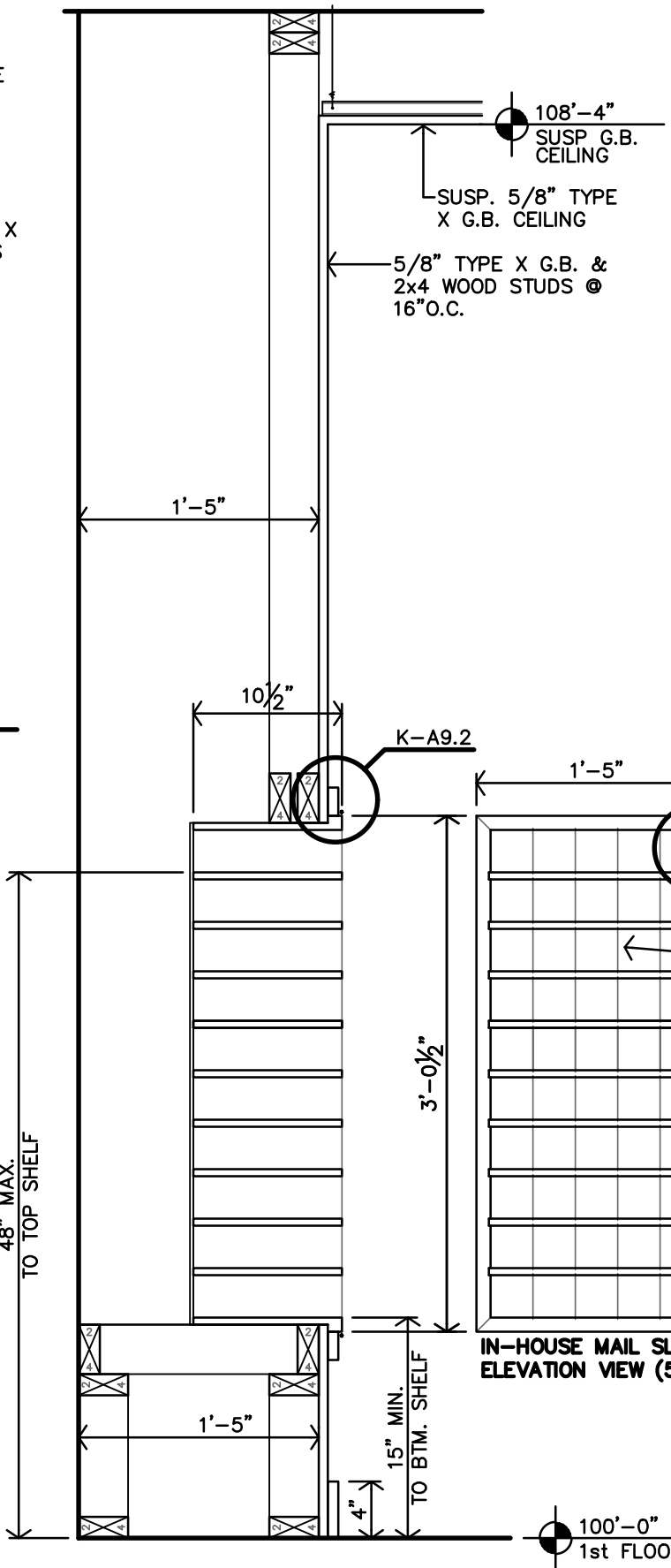
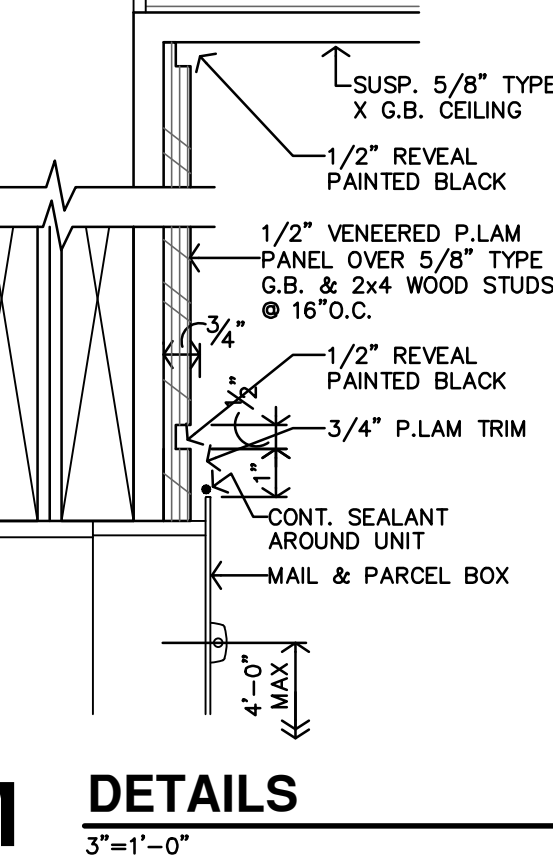
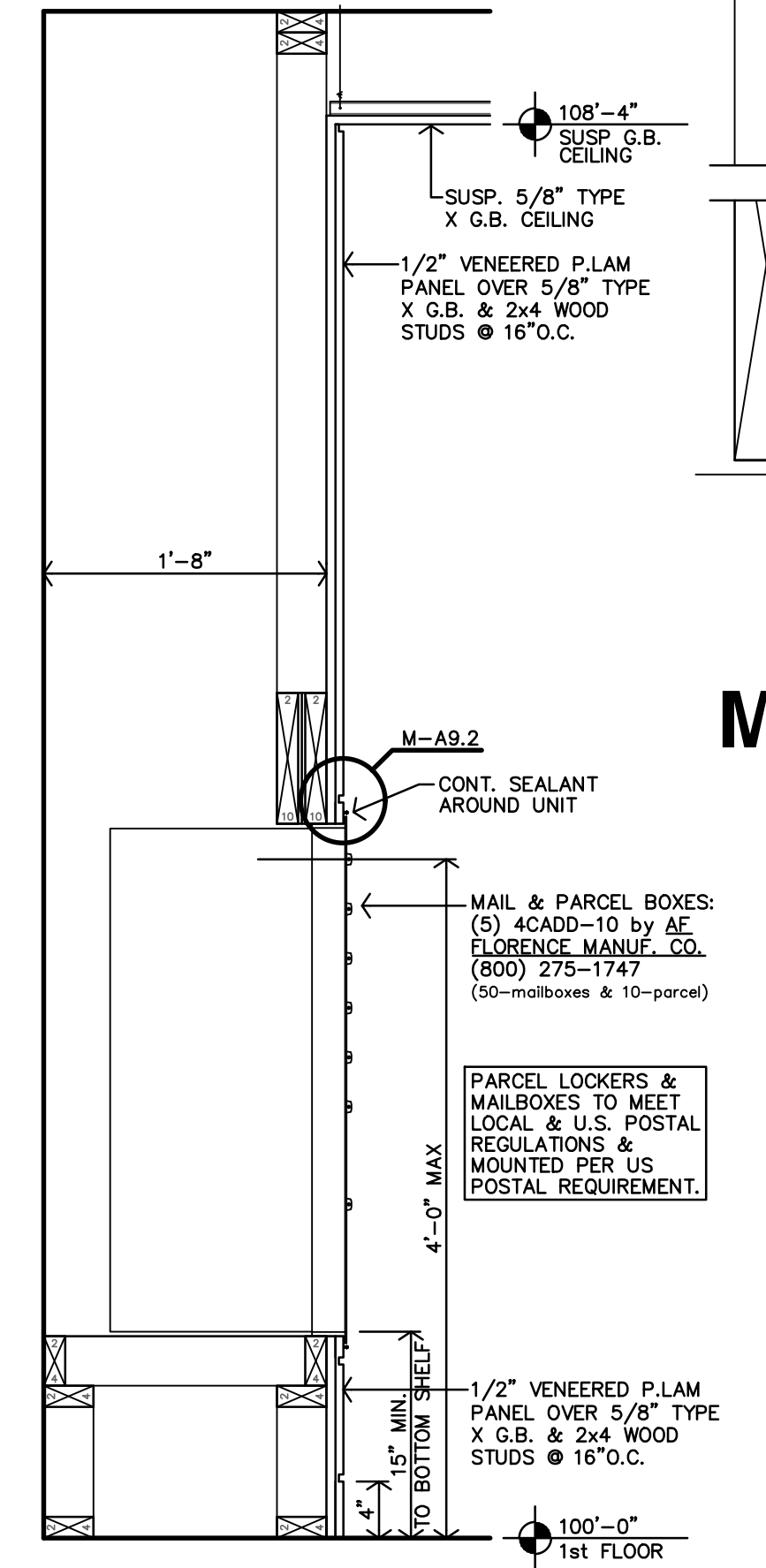
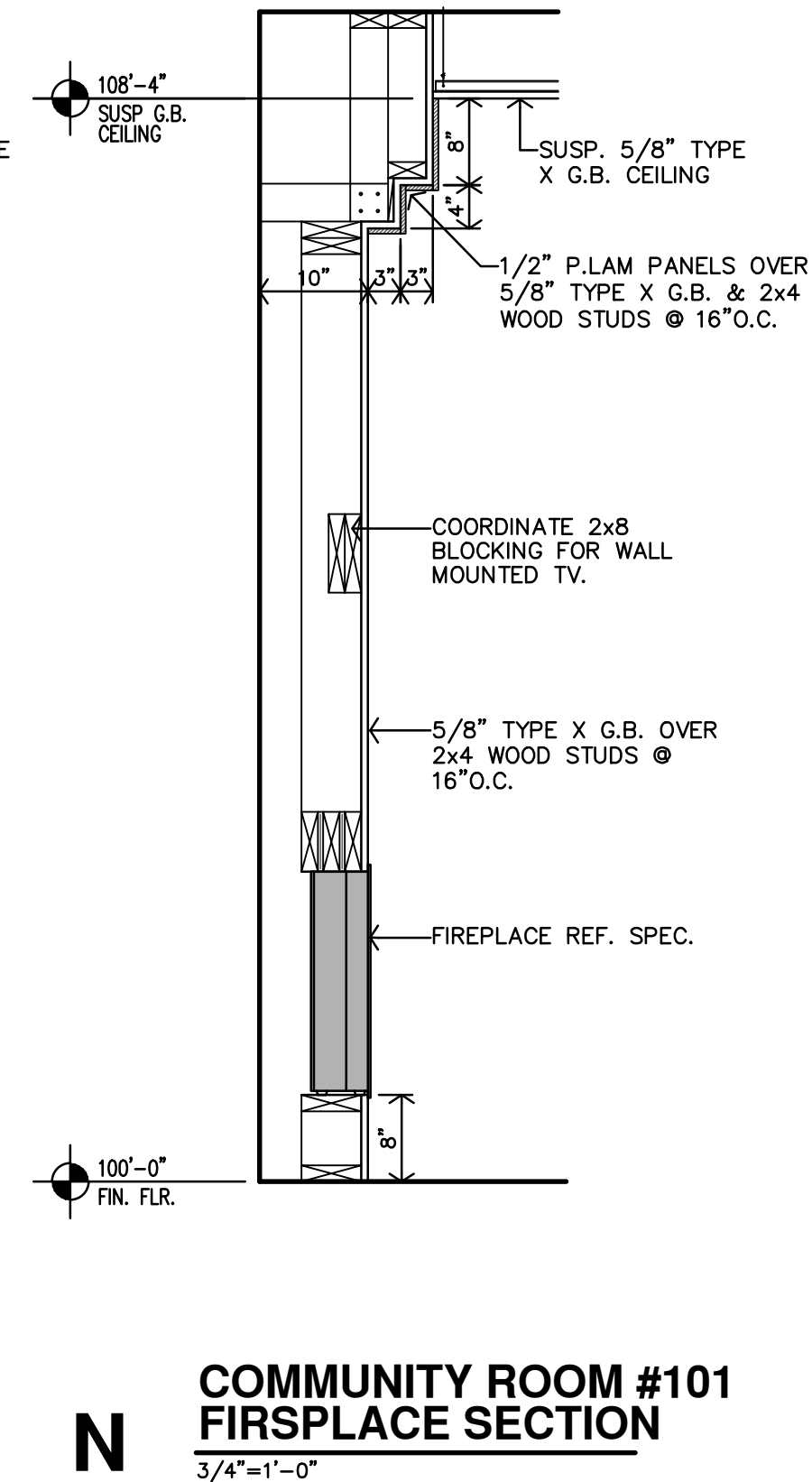
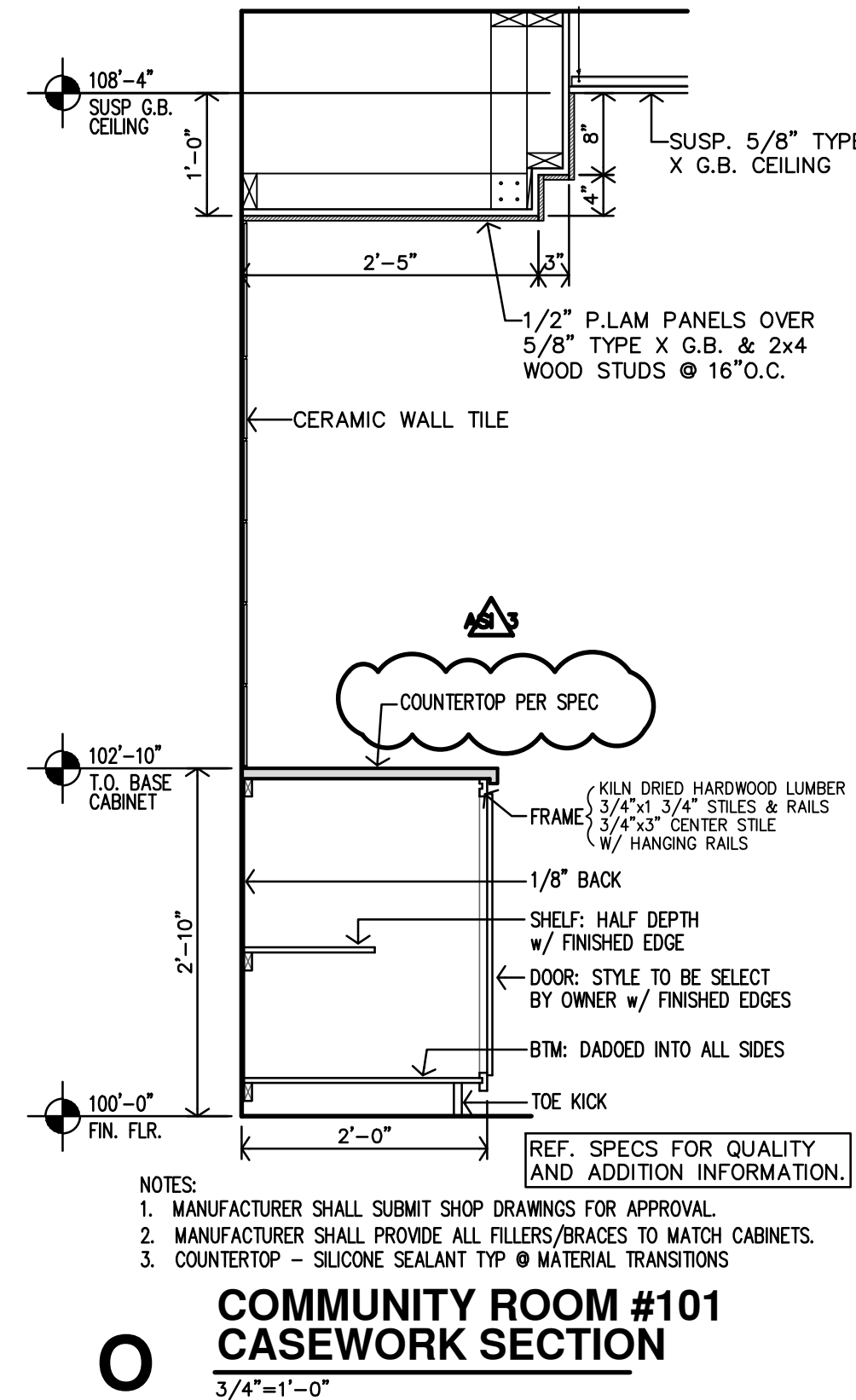
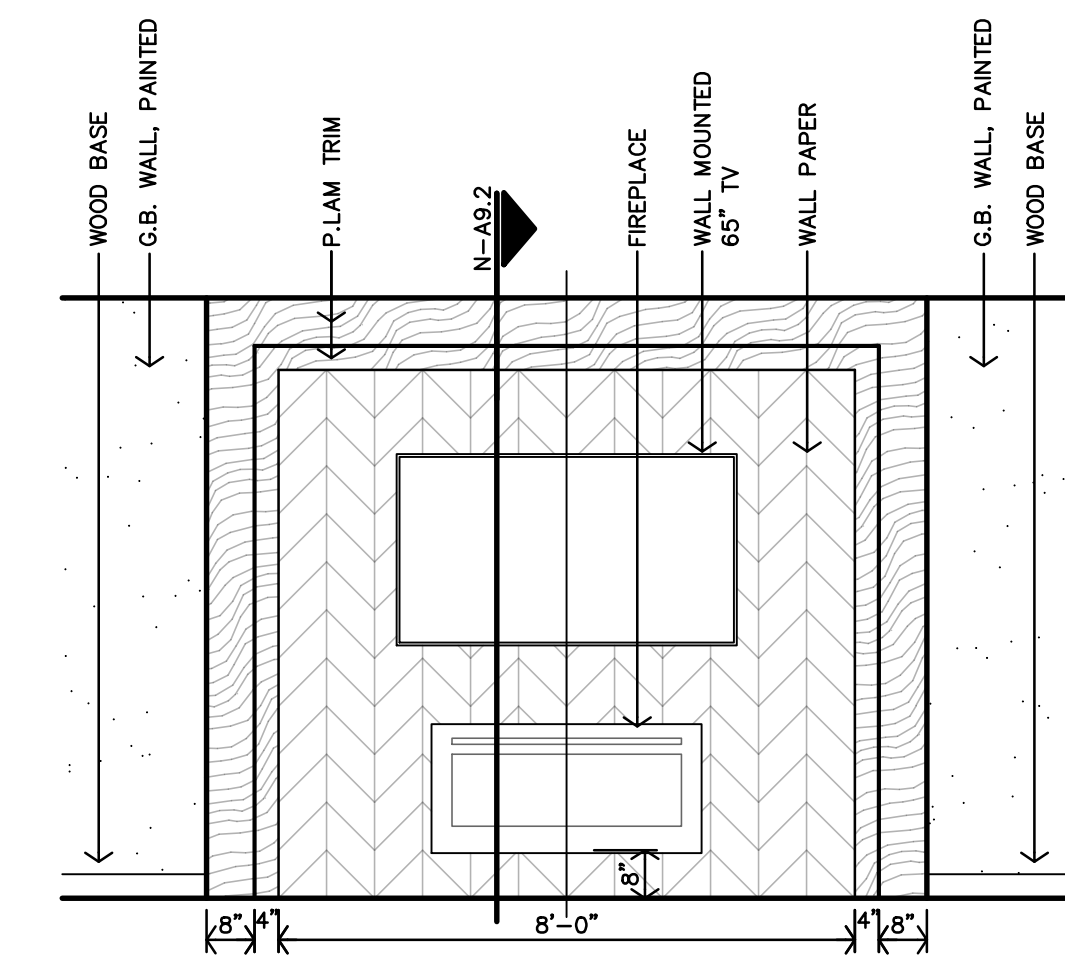
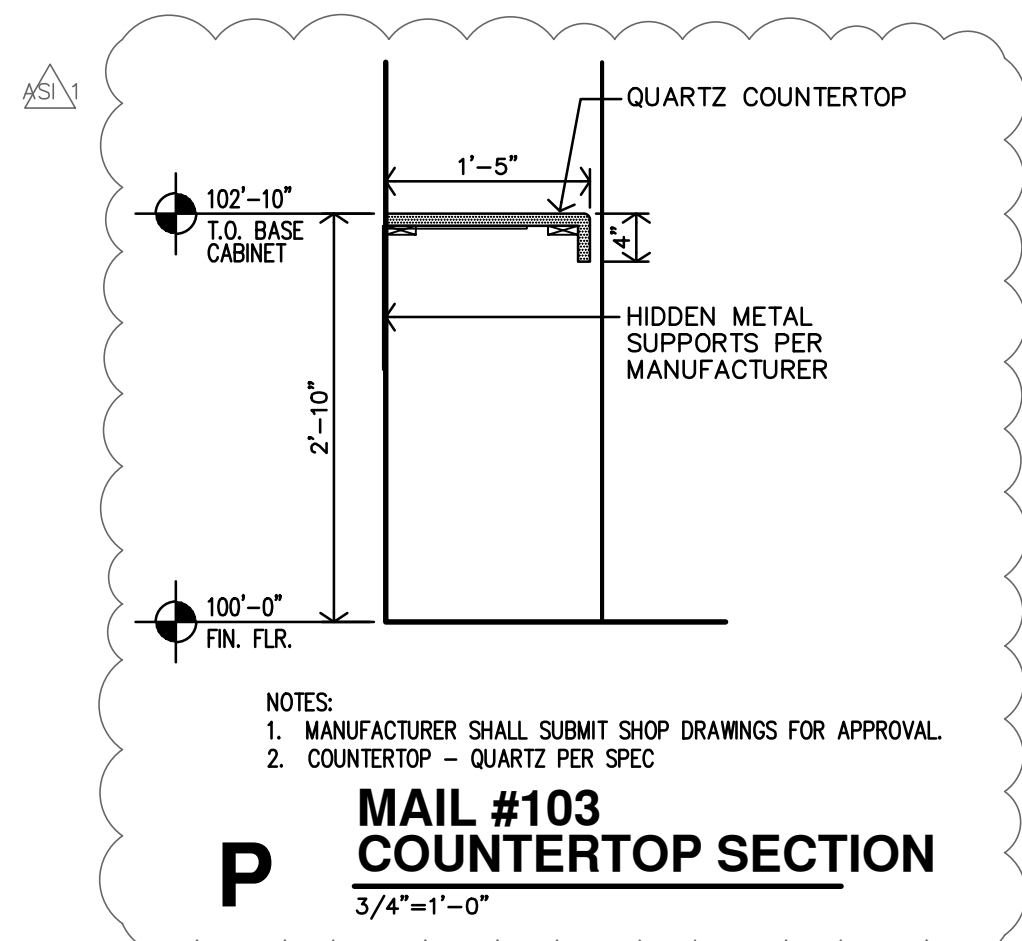
1. Revised Architectural Sheets A9.2 and A9.3

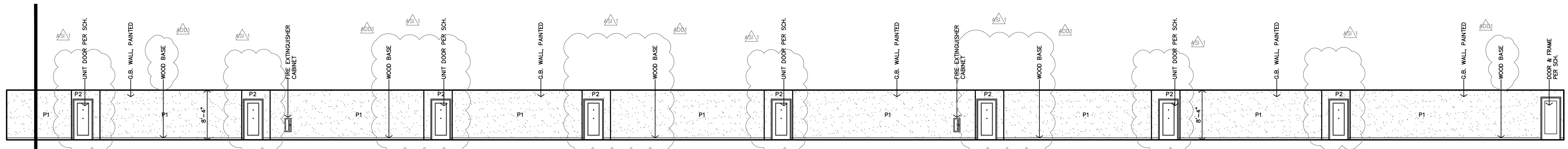
Issued by: Jones Gillam Renz Architects PO Box 2928, Salina, KS 67402
Maggie Gillam, Project Manager 785-827-0386

mjgillam@jgrarchitects.com

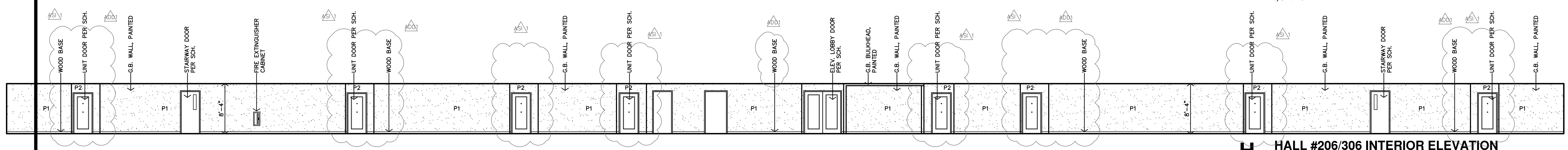
Copies to:

Dan Maximuk, Amanda Klaus – OPG
Eric Hubener – MCP Group
Ryan Lies – LST
Justin Strom – Snyder & Associates
Isaac Cundiff, Marcus Himmelberg - McClure

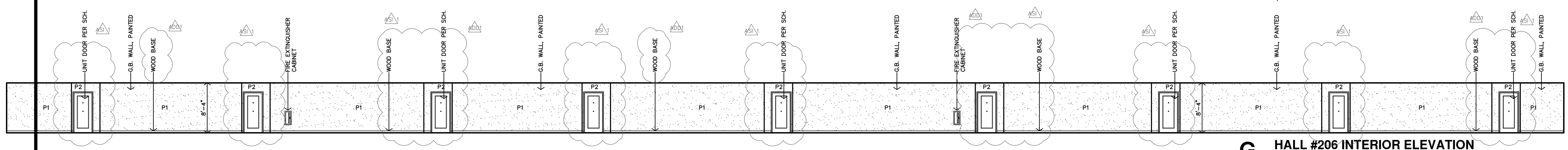




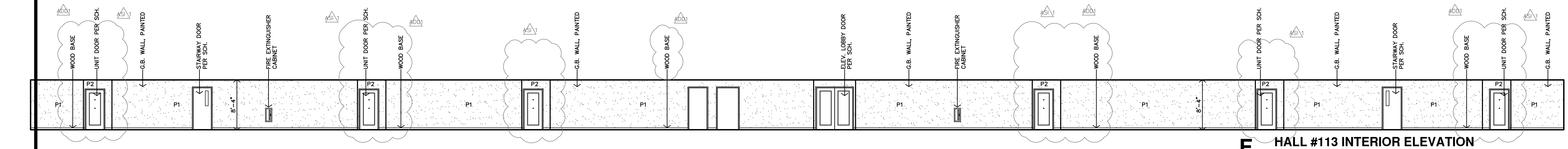
J HALL #206/306 INTERIOR ELEVATION
1/8"=1'-0"



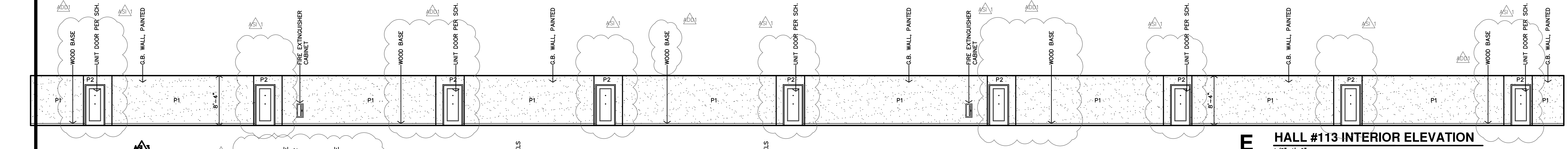
H HALL #206/306 INTERIOR ELEVATION
1/8"=1'-0"



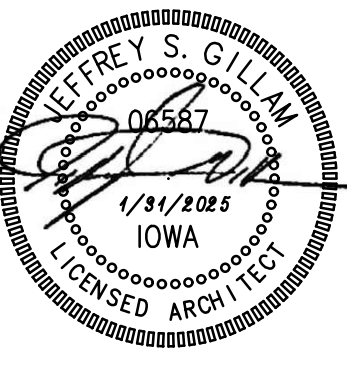
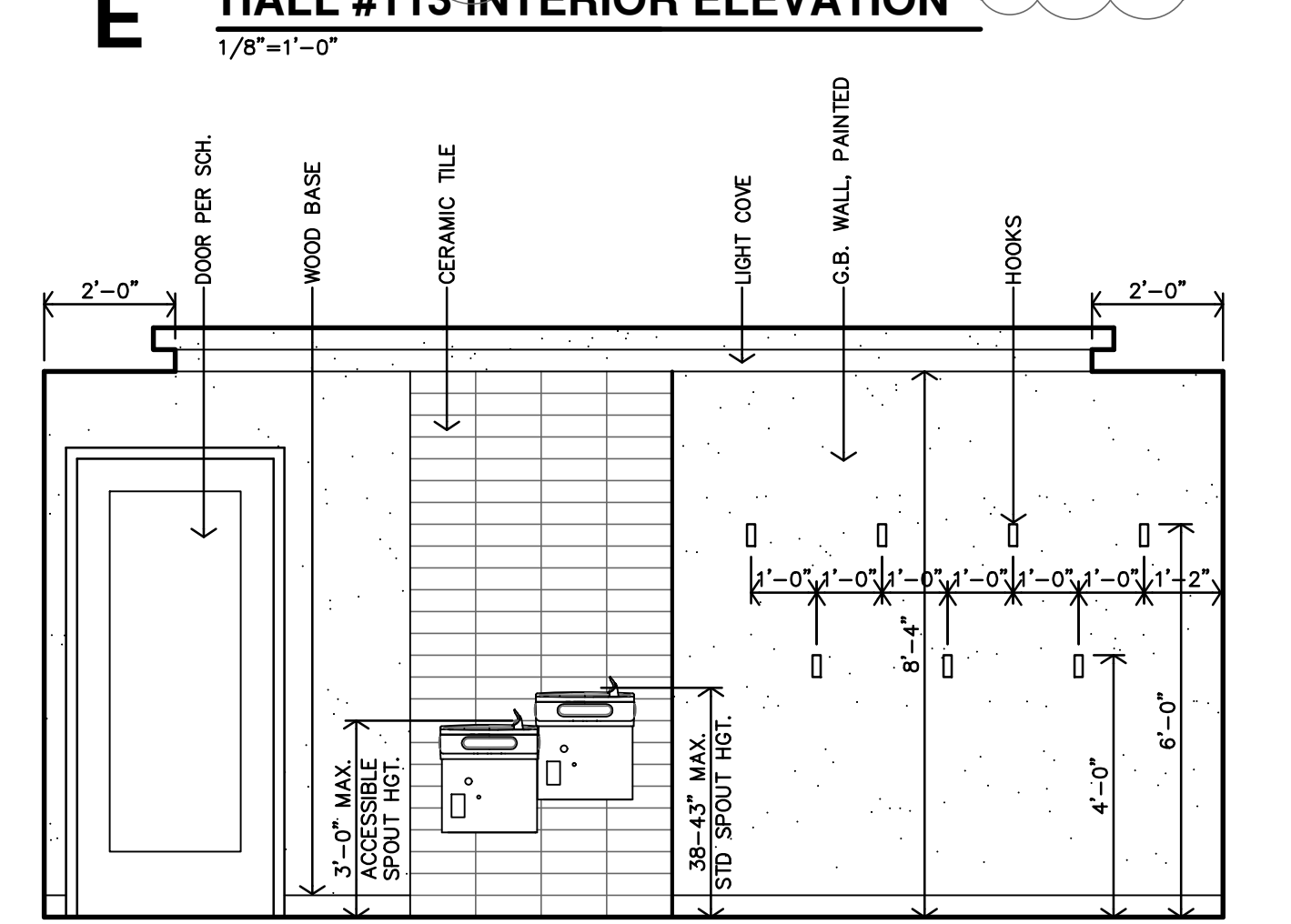
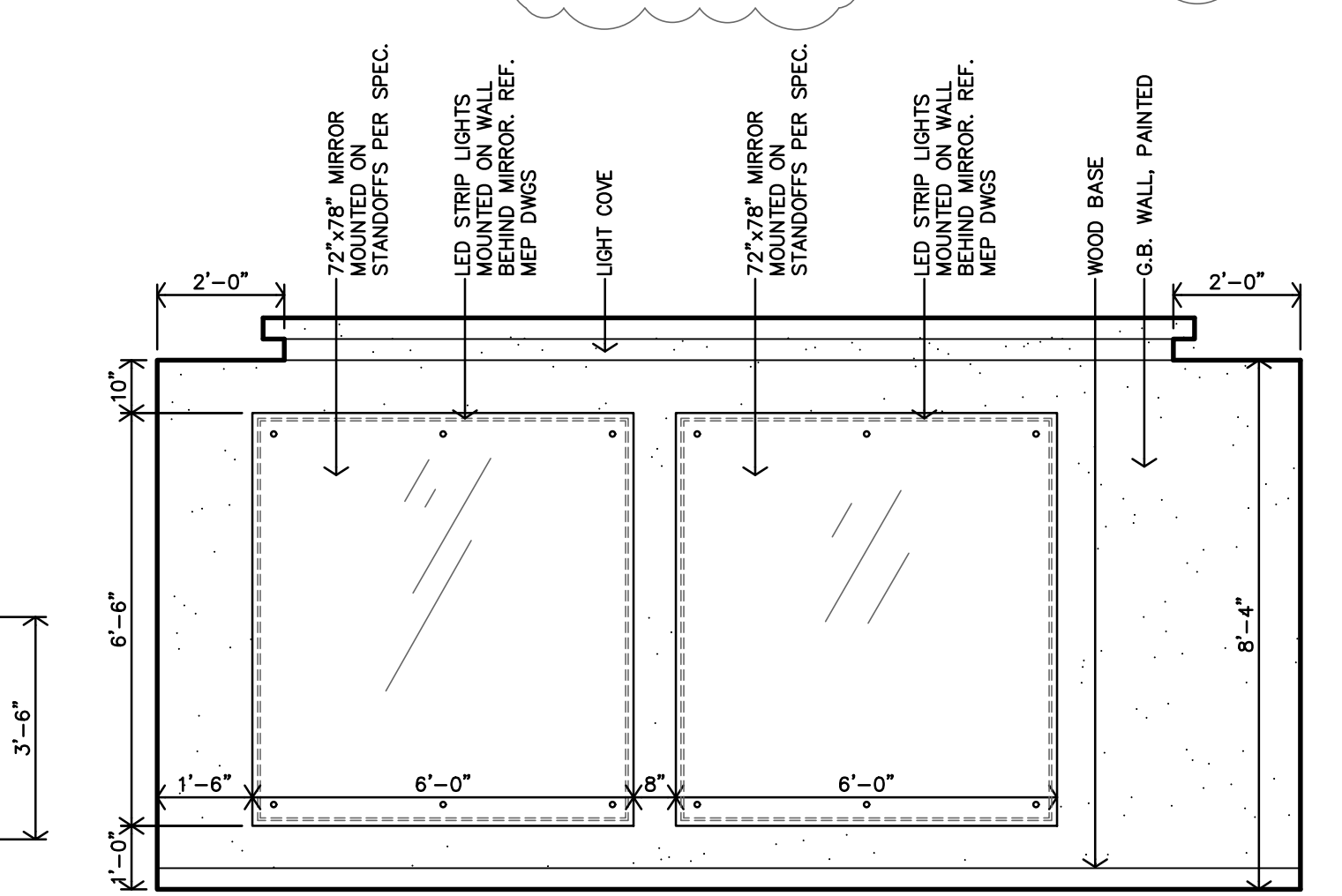
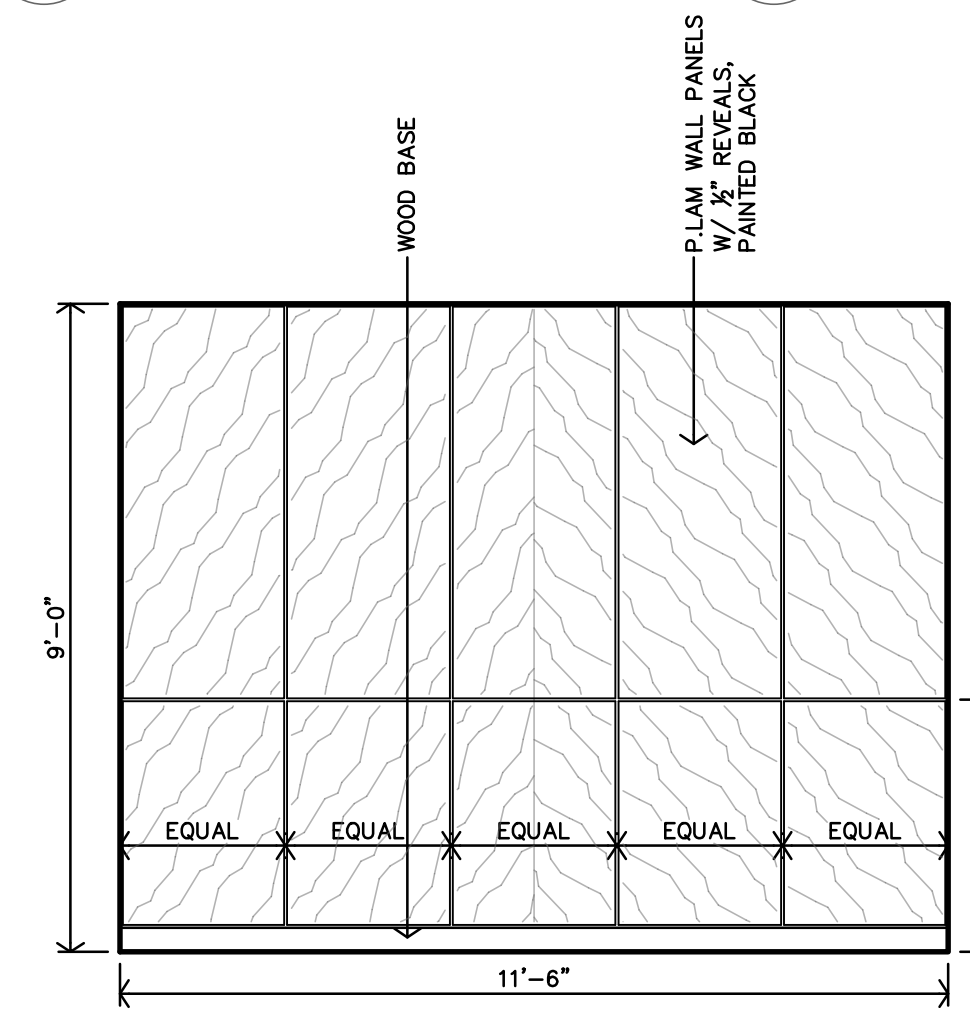
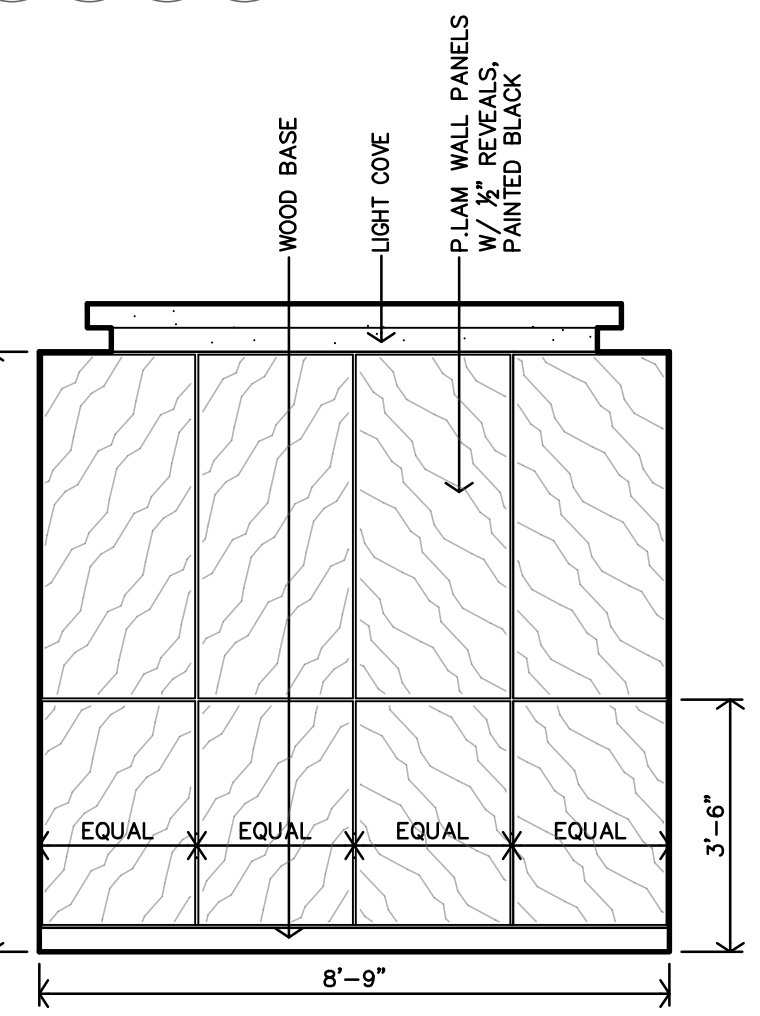
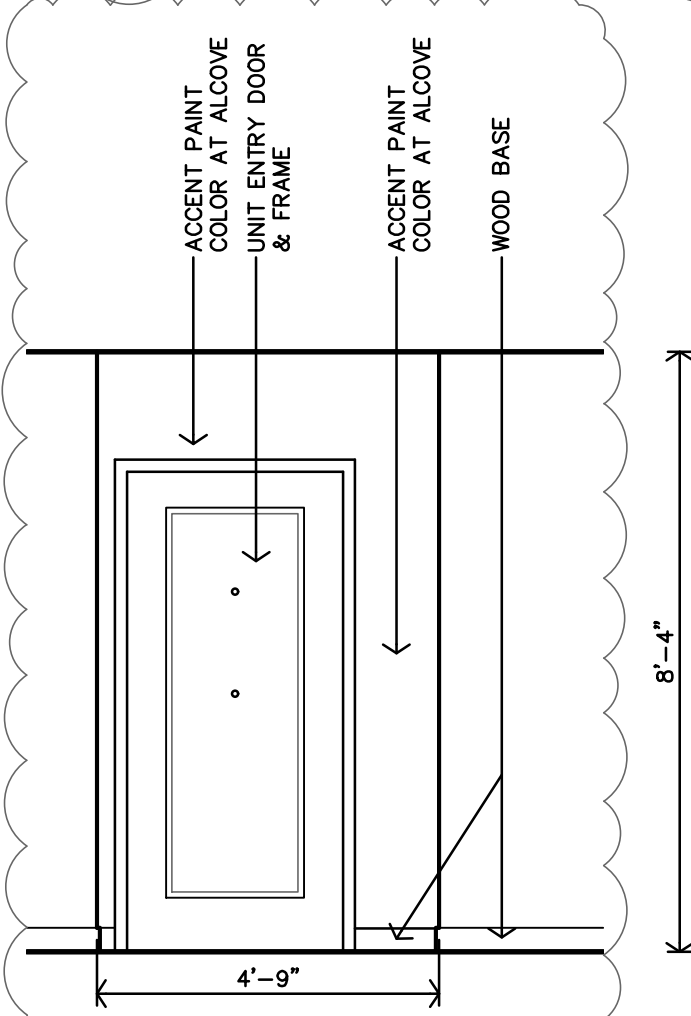
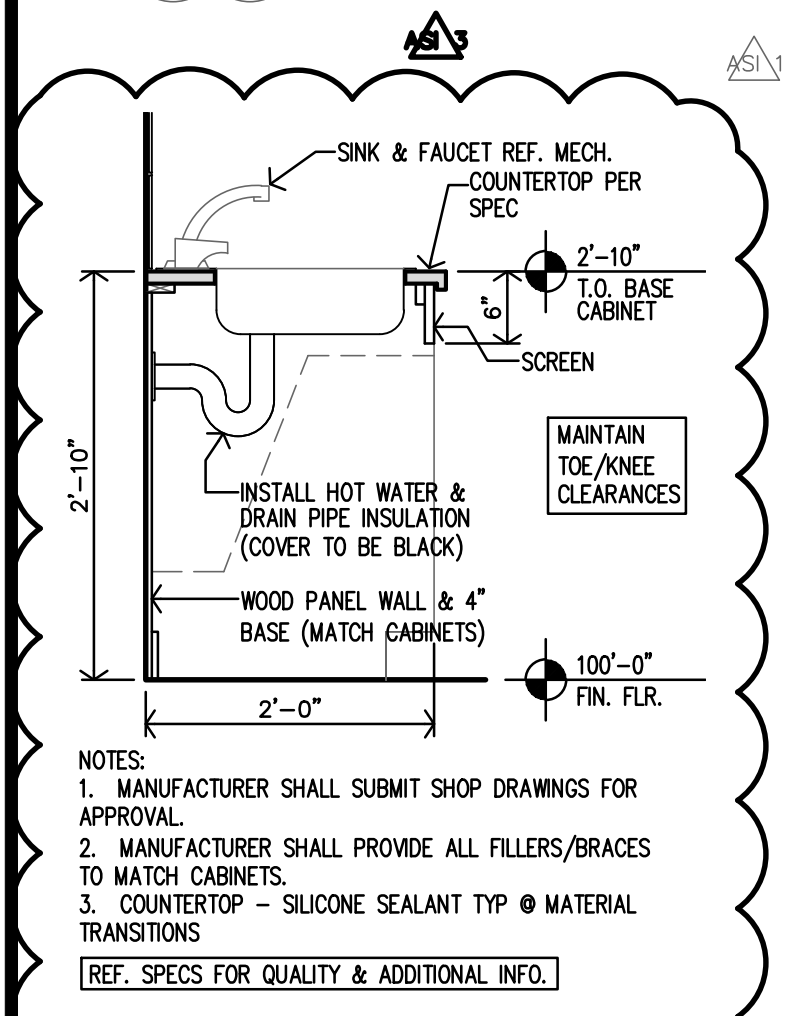
G HALL #206 INTERIOR ELEVATION
1/8"=1'-0"



F HALL #113 INTERIOR ELEVATION
1/8"=1'-0"



E HALL #113 INTERIOR ELEVATION
1/8"=1'-0"



REVISION:

ADD	2-14-2025
ADD	4-2-2025
ADD	4-22-2025

DATE: 1-31-2025
JOB: 24-3400
SHEET NO.: