

REVISION	BY

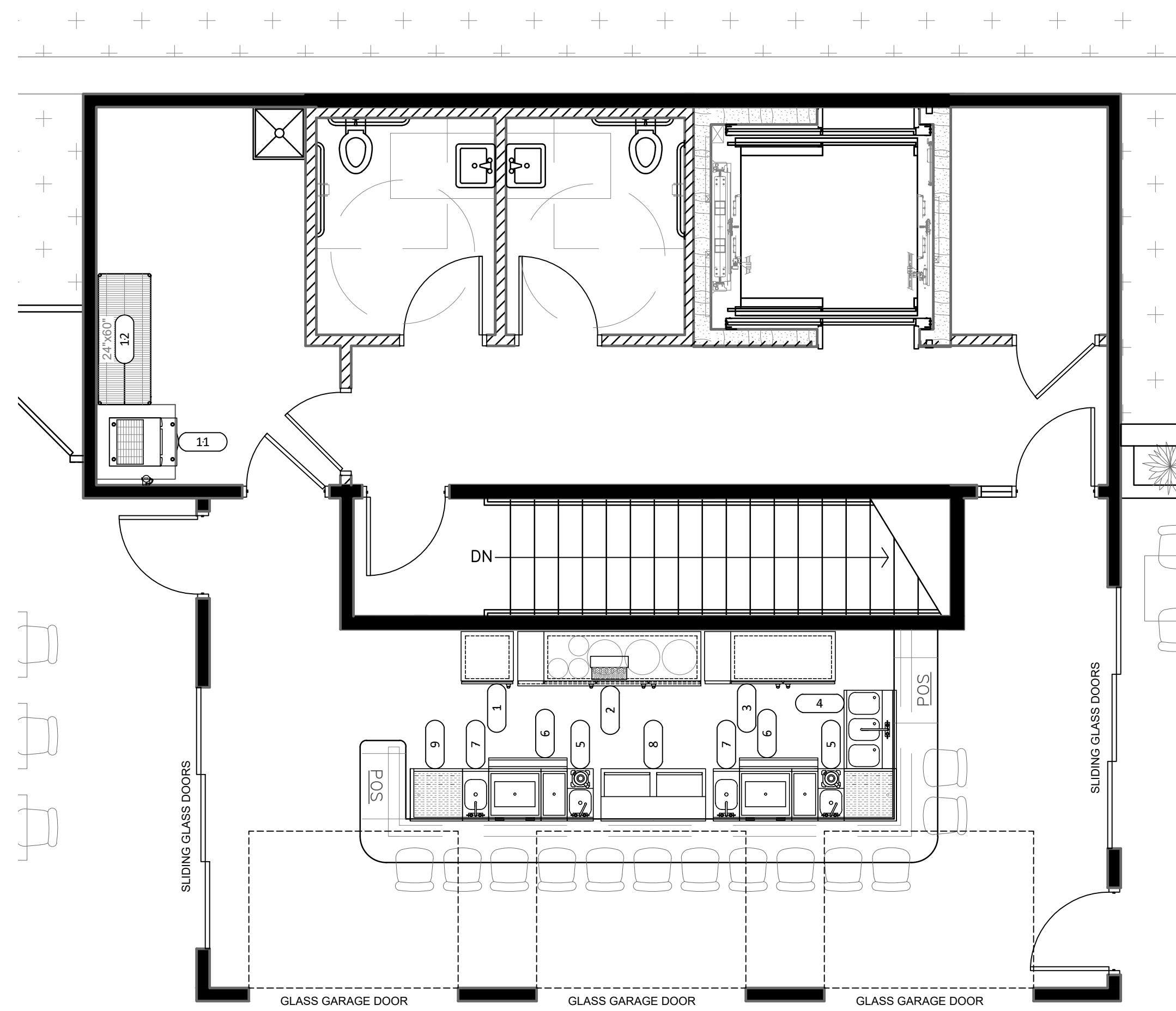
1647 Sunflower Lane
P.O. Box 1277
Salina, KS 67401
Phone: (785) 823-6394
Wichita, KS 67209
Phone: (316) 267-9881



PELE'S PLAYGROUND & LANAI BAR
101 NORTH SANTA FE AVENUE
SALINA, KS 67401

DRAWN BY:	PWS
CHECKED BY:	PWS
DATE:	11/25/24
SCALE:	1/4"=1'-0"
JOB NO:	24303P
SHEET:	

FS1



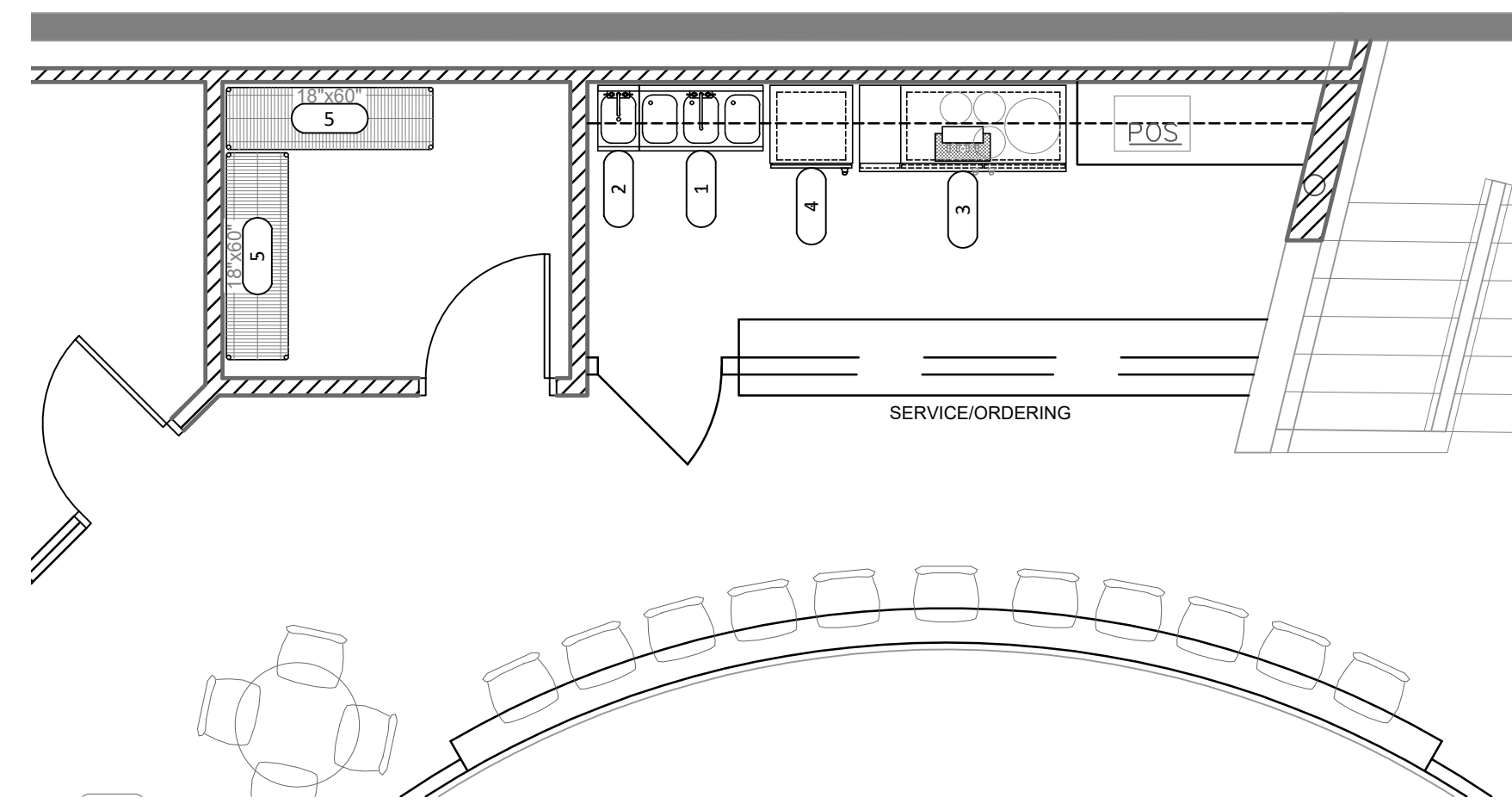
**LANAI BAR
FOOD SERVICE EQUIPMENT PLAN**

NORTH
0' 2' 4' 8' 1/4"=1'-0"

LANAI BAR - EQUIPMENT SCHEDULE					
ITEM	QTY	DESCRIPTION	MANUFACTURER	MODEL	REMARKS
1	1	BACK BAR CABINET, REFRIGERATED	KROWNE	BS24	-
2	1	DRAFT BEER COOLER	KROWNE	DB84	-
3	1	BACK BAR CABINET, REFRIGERATED	KROWNE	BS60	-
4	1	UNDERBAR SINK UNITS	KROWNE	KR24-33C	-
5	2	BLENDER STATION	KROWNE	KR24-12BD	-
6	2	ICE BIN WITH BOTTLE WELLS	KROWNE	KR24-M36R-10	-
7	2	HAND SINK	KROWNE	KR24-1C	-
8	1	BOTTLE COOLER	KROWNE	BC48-BG	-
9	1	DRAINBOARD	KROWNE	KR24-C24R	-
10	-	SPARE NUMBER	-	-	-
11	1	ICE MAKER, CUBE-STYLE	ICE-O-MATIC	CIM0520HA	-
12	1	BAR STORAGE SHELVING	METRO	-	-

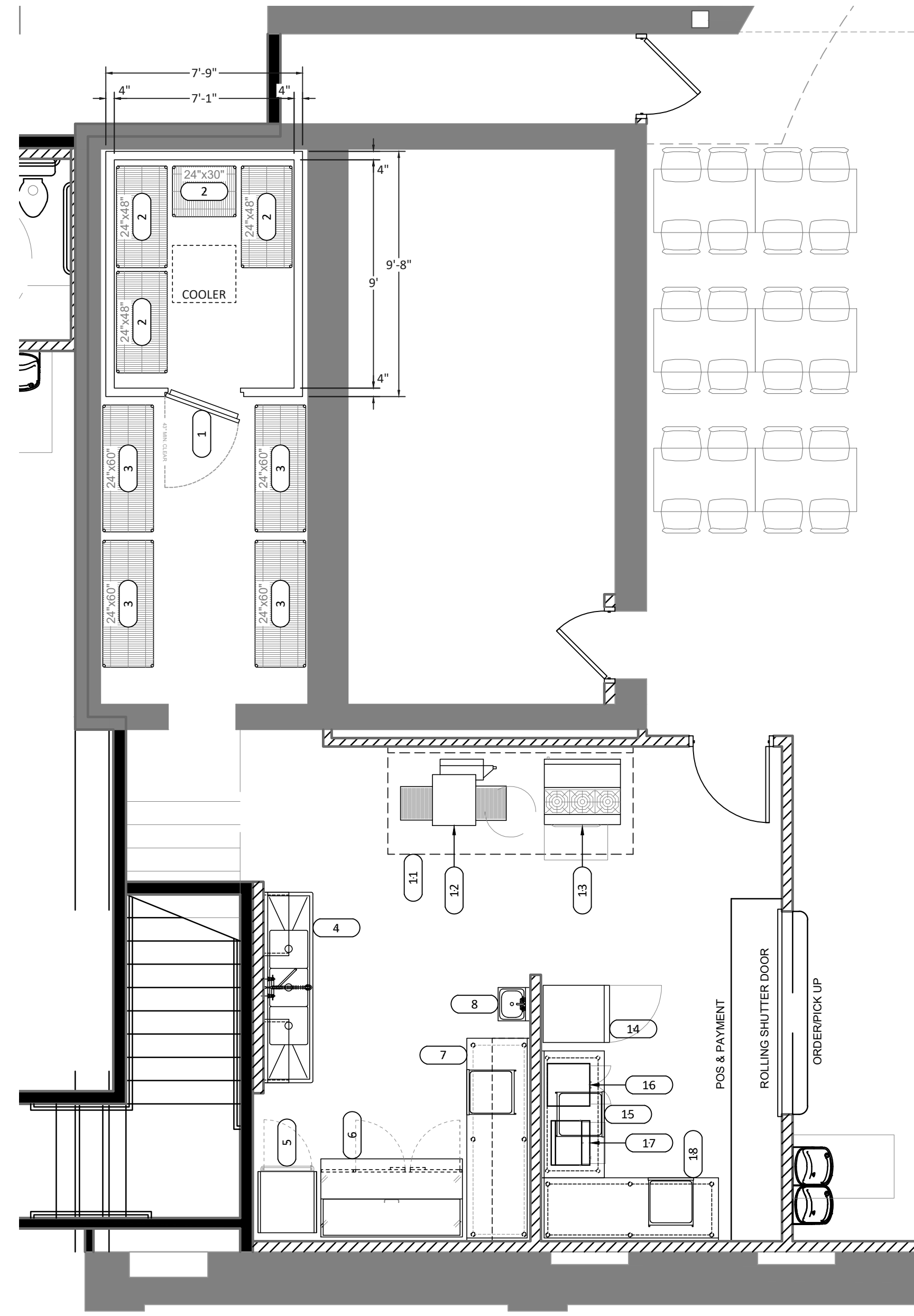
CONCESSIONS - EQUIPMENT SCHEDULE					
ITEM	QTY	DESCRIPTION	MANUFACTURER	MODEL	REMARKS
1	1	WALK IN COOLER, SELF-CONTAINED	KOLPAK	P8-0810-CT	-
2	4	COOLER SHELVING	METRO	-	-
3	4	DRY STORAGE SHELVING	METRO	-	-
4	1	THREE (3) COMPARTMENT SINK	JOHN BOOS	E358-18-12T18	-
5	1	HEATED CABINET	METRO	C539-CFC-U	-
6	1	PIZZA PREP REFRIGERATOR	BEVERAGE AIR	DP67HC	-
7	1	WORK TABLE, 96", STAINLESS STEEL	JOHN BOOS	ST6R5-3096SSK	-
8	1	HAND SINK	KROWNE	HS-2L	-
9	-	SPARE NUMBER	-	-	-
10	-	SPARE NUMBER	-	-	-
11	1	EXHAUST HOOD	-	-	BY OTHER TRADES
12	1	CONVEYOR OVEN, ELECTRIC	LINCOLN IMPINGER	2500-4/1346	-
13	1	RANGE, 36", 6 OPEN BURNERS	VULCAN	SX36-6BN	-
14	1	REFRIGERATED MERCHANDISER	ATOSA	MCF8722GR	-
15	1	WORK TABLE, 60", STAINLESS STEEL	JOHN BOOS	ST6R5-3060SSK	-
16	1	POPCORN POPPER	GOLD MEDAL	2552	-
17	1	HOT DOG STEAMER	GOLD MEDAL	8151	-
18	1	WORK TABLE, 84", STAINLESS STEEL	JOHN BOOS	ST6R5-3084SSK	-
19	-	SPARE NUMBER	-	-	-
20	-	SPARE NUMBER	-	-	-

MEZZANINE BAR - EQUIPMENT SCHEDULE					
ITEM	QTY	DESCRIPTION	MANUFACTURER	MODEL	REMARKS
1	1	UNDERBAR SINK UNITS	KROWNE	KR19-33C	-
2	1	HAND SINK	KROWNE	KR19-1C	-
3	1	DRAFT BEER COOLER	KROWNE	DB60	-
4	1	BACK BAR CABINET, REFRIGERATED	KROWNE	BS24	-
5	1	BAR STORAGE SHELVING	METRO	-	-



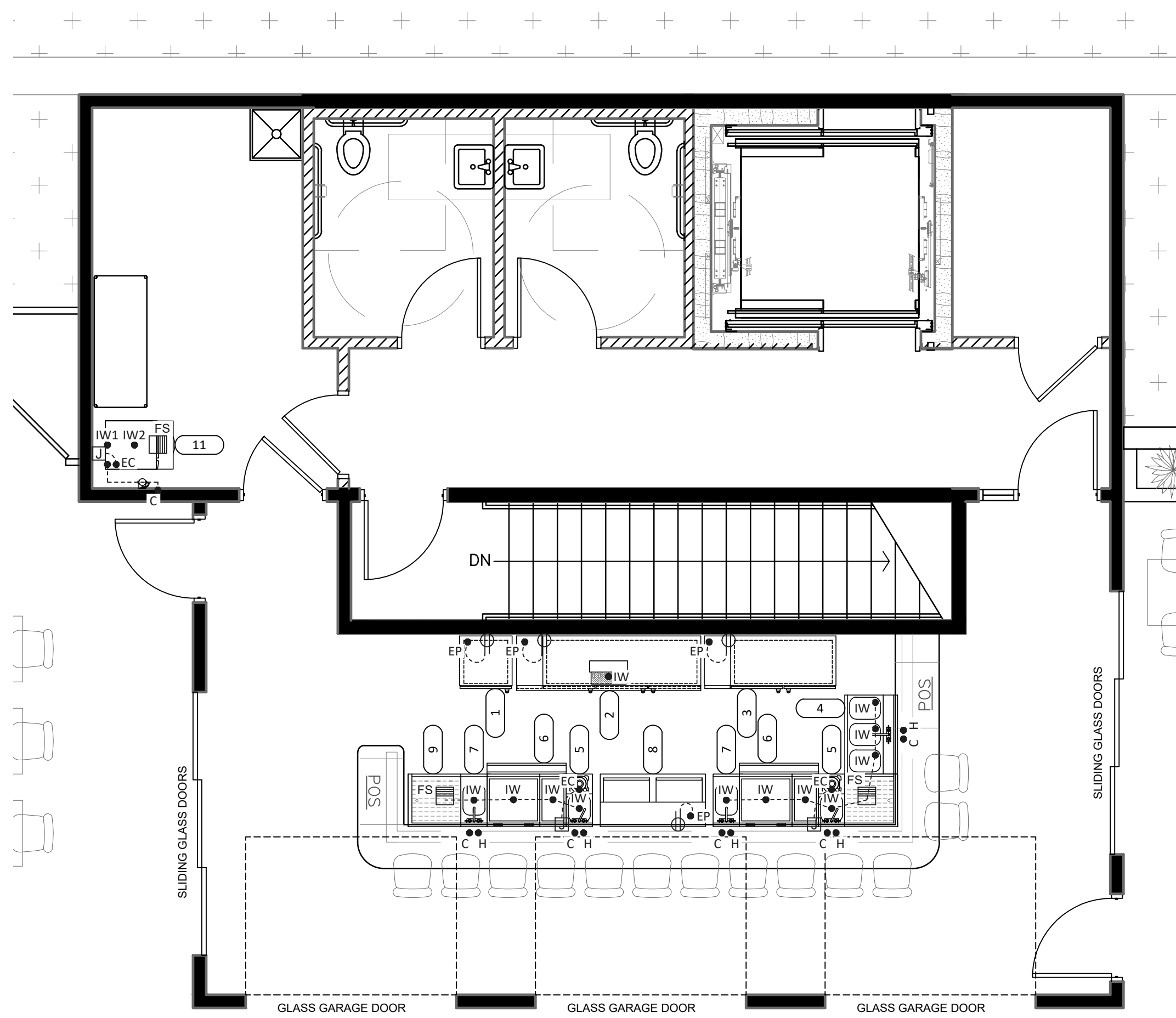
**MEZZANINE BAR
FOOD SERVICE EQUIPMENT PLAN**

NORTH
0' 2' 4' 8' 1/4"=1'-0"



**CONCESSIONS
FOOD SERVICE EQUIPMENT PLAN**

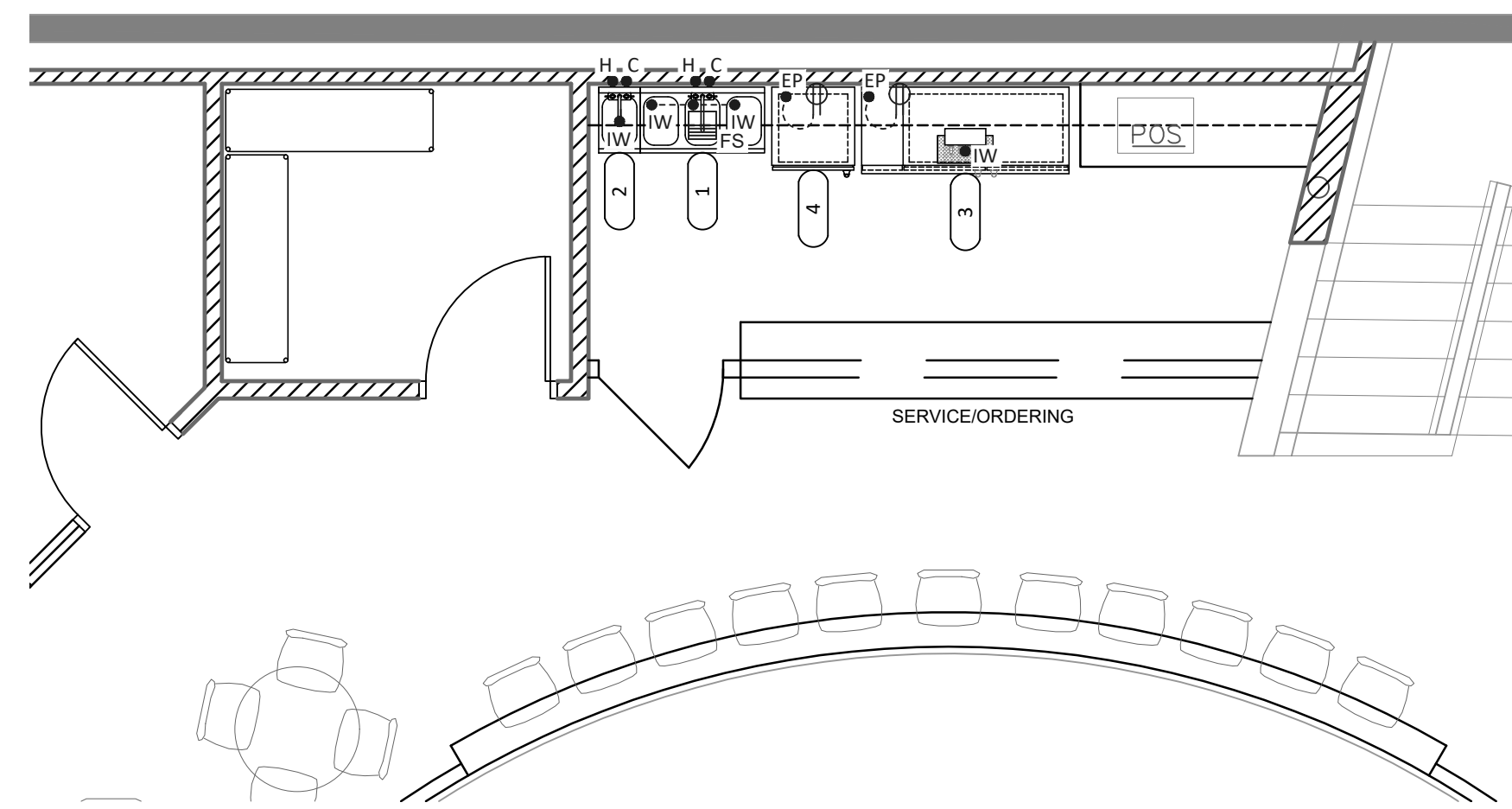
NORTH
0' 2' 4' 8' 1/4"=1'-0"



**LANAI BAR
UTILITY CONNECTION PLAN**

NORTH

0' 2' 4' 8' 1/4"=1'-0"



**MEZZANINE BAR
UTILITY CONNECTION PLAN**

NORTH

0' 2' 4' 8' 1/4"=1'-0"

CONCESSIONS - PLUMBING SCHEDULE														
ITEM	QTY	(H) HOT WATER			(C) COLD WATER			(IW) INDIRECT WASTE			(D) DIRECT DRAIN		ITEM	
		SIZE	HEIGHT	REMARKS	SIZE	HEIGHT	REMARKS	SIZE	HEIGHT	REMARKS	SIZE	HEIGHT		REMARKS
1	1	-	-	-	-	-	-	-	-	-	-	-	1	
4	1	1/2"	18"	CONN. TO FAUCET REQ'D, BY PC.	1/2"	18"	CONN. TO FAUCET REQ'D, BY PC.	2"	-	MANIFOLD (3) & EXTEND TO FS, BY PC.	-	-	4	
8	1	1/2"	18"	CONN. TO FAUCET REQ'D, BY PC.	1/2"	18"	CONN. TO FAUCET REQ'D, BY PC.	-	-	-	1-1/2"	24"	CONN. REQ'D, BY PC.	8

LANAI BAR - PLUMBING SCHEDULE													
ITEM	QTY	(H) HOT WATER			(C) COLD WATER			(IW) INDIRECT WASTE			(D) DIRECT DRAIN		ITEM
		SIZE	HEIGHT	REMARKS	SIZE	HEIGHT	REMARKS	SIZE	HEIGHT	REMARKS	SIZE	HEIGHT	
2	1	-	-	-	-	-	-	1/2"	-	EXTEND DRIP TRAY TO FS REQ'D, BY PC.	-	-	2
4	1	1/2"	12"	CONN. TO FAUCET REQ'D, BY PC.	1/2"	12"	CONN. TO FAUCET REQ'D, BY PC.	1-1/2"	-	IW1 (SINKS); MANIFOLD (3) & EXTEND TO FS REQ'D, BY PC.	-	-	4
5	2	1/2"	12"	CONN. TO FAUCET REQ'D, BY PC.	1/2"	12"	CONN. TO FAUCET REQ'D, BY PC.	1-1/2"	-	EXTEND TO FS REQ'D, BY PC.	-	-	5
7	2	1/2"	12"	CONN. TO FAUCET REQ'D, BY PC.	1/2"	12"	CONN. TO FAUCET REQ'D, BY PC.	1-1/2"	-	EXTEND TO FS REQ'D, BY PC.	-	-	7
9	1	-	-	-	-	-	-	1"	-	EXTEND TO FS REQ'D, BY PC.	-	-	9
11	1	-	-	-	1/2"	60"	3/8" CONN. THRU FILTER REQ'D, BY PC.	3/4"	-	IW1 (HEAD); EXTEND TO FS REQ'D, BY PC.	-	-	11
										IW2 (BIN); EXTEND TO FS REQ'D, BY PC.			

MEZZANINE BAR - PLUMBING SCHEDULE													
ITEM	QTY	(H) HOT WATER			(C) COLD WATER			(IW) INDIRECT WASTE			(D) DIRECT DRAIN		ITEM
		SIZE	HEIGHT	REMARKS	SIZE	HEIGHT	REMARKS	SIZE	HEIGHT	REMARKS	SIZE	HEIGHT	
1	1	1/2"	12"	CONN. TO FAUCET REQ'D, BY PC.	1/2"	12"	CONN. TO FAUCET REQ'D, BY PC.	1-1/2"	-	MANIFOLD (3) & EXTEND TO FS, BY PC.	-	-	1
2	1	1/2"	12"	CONN. TO FAUCET REQ'D, BY PC.	1/2"	12"	CONN. TO FAUCET REQ'D, BY PC.	1-1/2"	-	EXTEND TO FS REQ'D, BY PC.	-	-	2
3	1	-	-	-	-	-	-	1/2"	-	EXTEND DRIP TRAY TO FS REQ'D, BY PC.	-	-	3

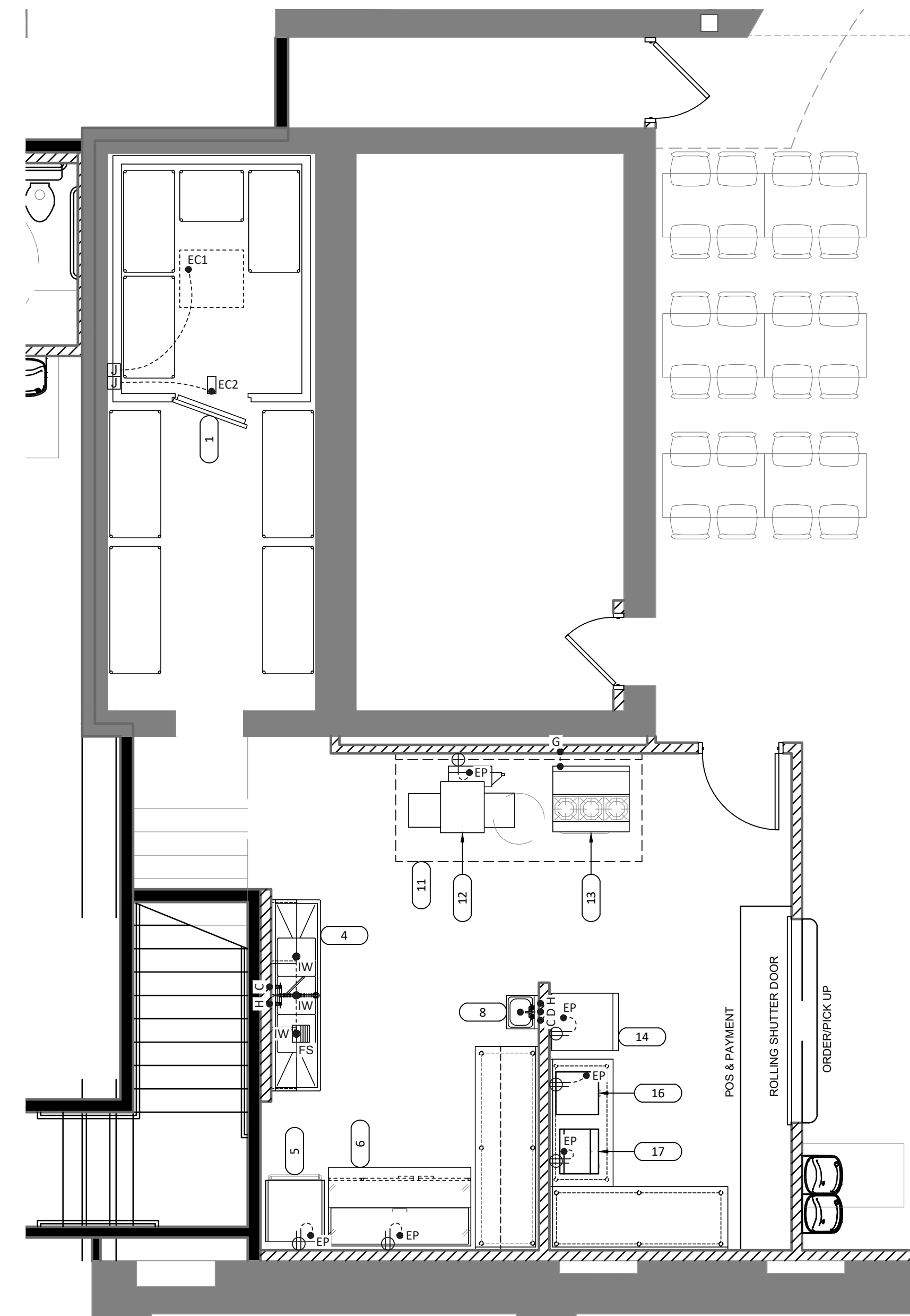
CONCESSIONS - EXHAUST SCHEDULE												
ITEM	QTY	HOOD MUA					HOOD EXHAUST					REMARKS
		SIZE	CFM	SP	HEIGHT	REMARKS	SIZE	CFM	SP	HEIGHT	REMARKS	
11	1	-	-	-	-	-	-	-	-	-	-	116" L X 48" W MIN. CAPTURE AREA REQ'D. UTILITIES NOT SHOWN. BY OTHER TRADES.

CONCESSIONS - GAS SCHEDULE					
ITEM	QTY	SIZE	MBTU	HEIGHT	REMARKS
13	1	3/4"	198	30"	CONN. REQ'D, BY PC. HOSE, BY FSC.

LANAI BAR - ELECTRICAL SCHEDULE								
ITEM	QTY	VOLTS	PHASE	AMPS	KW	NEMA	HEIGHT	REMARKS
1	1	120	1	1.7	-	5-15P	18"	WALL ER REQ'D, BY EC.
2	1	120	1	2.7	-	5-15P	18"	WALL ER REQ'D, BY EC.
3	1	120	1	2.2	-	5-15P	18"	WALL ER REQ'D, BY EC.
5	2	120	1	13.0	-	5-15P	12"	ER IN UTILITY BOX BENEATH SINK FOR BLENDER & CONN. TO ER REQ'D, BY EC.
8	1	120	1	2.2	-	5-15P	18"	WALL ER REQ'D, BY EC.
11	1	120	1	17.8	-	-	66"	CONN. REQ'D, BY EC.

CONCESSIONS - ELECTRICAL SCHEDULE								
ITEM	QTY	VOLTS	PHASE	AMPS	KW	NEMA	HEIGHT	REMARKS
1	1	120	1	11.4	-	-	108"	EC1 (REFRIG); CONN. REQ'D, BY EC.
		120	1	6.0	-	-	108"	EC2 (LIGHTS & ACCESSORY); CONN. REQ'D, BY EC.
5	1	120	1	16.7	2.0	5-20P	24"	WALL ER REQ'D, BY EC.
6	1	120	1	4.5	-	5-15P	18"	WALL ER REQ'D, BY EC.
11	1	-	-	-	-	-	-	UTILITIES NOT SHOWN - BY OTHERS.
12	1	208	1	31.0	6	6-50P	36"	WALL ER REQ'D, BY EC.
14	1	120	1	2.1	-	5-15P	18"	WALL ER REQ'D, BY EC.
16	1	120	1	11.5	1.4	5-15P	48"	WALL ER REQ'D, BY EC.
17	1	120	1	6.5	0.8	5-15P	48"	WALL ER REQ'D, BY EC.

MEZZANINE BAR - ELECTRICAL SCHEDULE								
ITEM	QTY	VOLTS	PHASE	AMPS	KW	NEMA	HEIGHT	REMARKS
3	1	120	1	2.2	-	5-15P	18"	WALL ER REQ'D, BY EC.
4	1	120	1	1.7	-	5-15P	18"	WALL ER REQ'D, BY EC.



**CONCESSIONS
UTILITY CONNECTION PLAN**

NORTH

0' 2' 4' 8' 1/4"=1'-0"

REVISION	BY
-	-
-	-
-	-
-	-
-	-

1647 Sunflower Lane
P.O. Box 12777
Salina, KS 67401
Phone: (785) 823-6394

Wichita, KS 67209
Phone: (316) 267-9881



PELE'S PLAYGROUND & LANAI BAR
101 NORTH SANTA FE AVENUE
SALINA, KS 67401

DRAWN BY: PWS
CHECKED BY: PWS
DATE: 11/25/24
SCALE: 1/4"=1'-0"
JOB NO: 24303P
SHEET:

FS2