



Jones Gillam Renz Architects

Address

730 N 9th St. 1881 Main St., Suite 301
Salina, KS 67401 Kansas City, MO 64108

Contact

jgr@jgrarchitects.com
(785) 827-0386

Web

jgrarchitects.com

ARCHITECT’S SUPPLEMENTAL INSTRUCTIONS

JONES GILLAM RENZ DOCUMENT JGR 710

PROJECT:	The Reserves at Cobalt Circle New Development Brownsville, TN	Report No.	Fourteen (14)
OWNER:	OPG Cobalt Circle Partners, LLC Dan Maximuk 250 N. Santa Fe Ave, Suite A Salina, KS 67401	Date	June 19, 2026
CONTRACTOR:	MCP Group 3501 SW Fairlawn Rd. Topeka, KS 66614	Architect’s Proj No.	24-3446
		Contract For:	General Construction Mechanical, Electrical

The work shall be carried out in accordance with the following supplemental instructions issued in accordance with the Contract Documents without change in Contract Sum or Contract Time. Prior to proceeding in accordance with these instructions, indicate your acceptance of these instructions for minor change to the Work as consistent with the Contract Documents and return a copy to the Architect.

DESCRIPTION:

Contractor to make adjustments as needed and required per the modifications as indicated on attached drawings and in the below descriptions:

- Monument Sign – curved along top of sign has been eliminated. Top of sign shall be straight. G.C. to coordinate size of monument with size of sign provided by owner. Reference revised Sheet A1.3
- Columns at apartments have been adjusted to extend to underside of soffit above. Stone veneer will be installed in the area between the trim detail and the soffit. Reference revised sheet A4.6

Attachments:

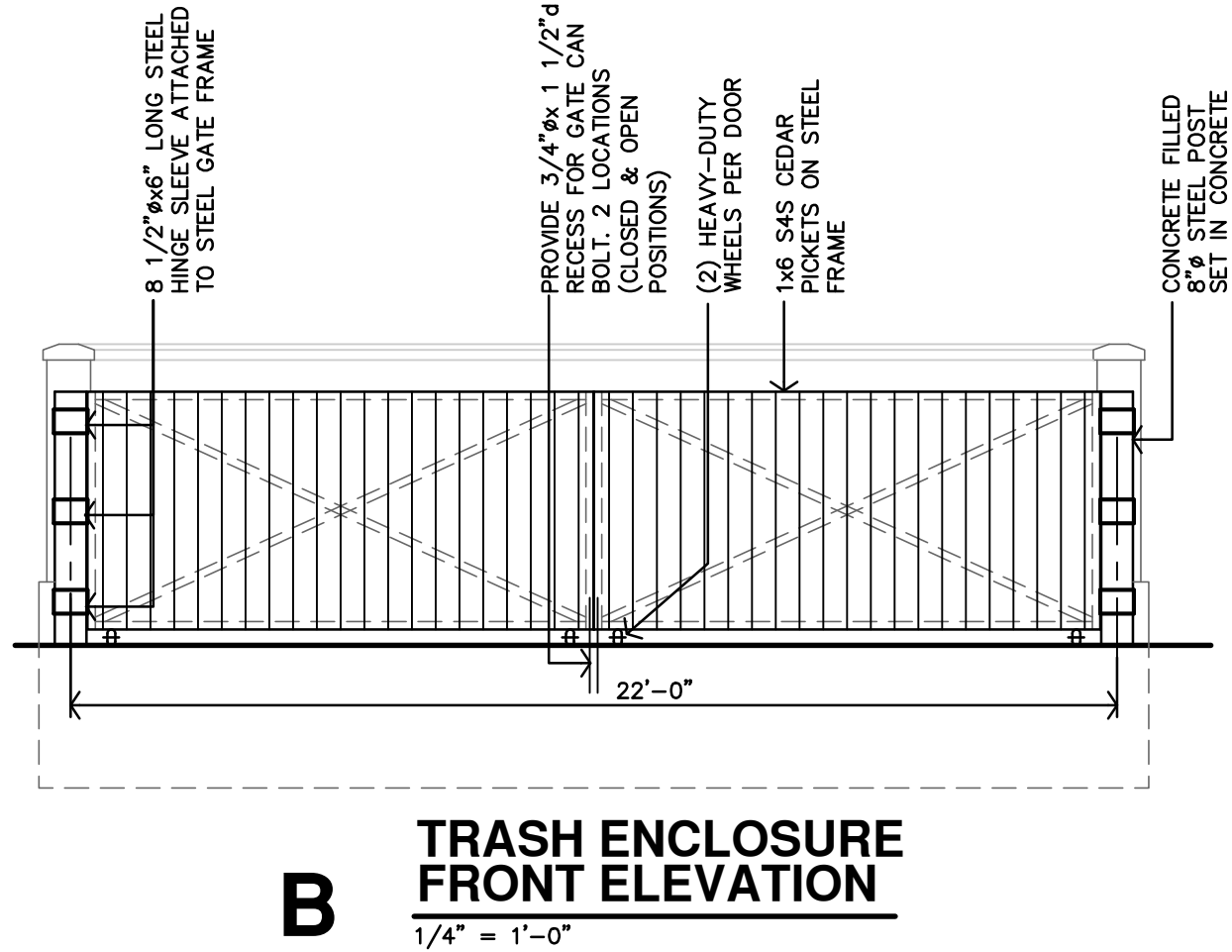
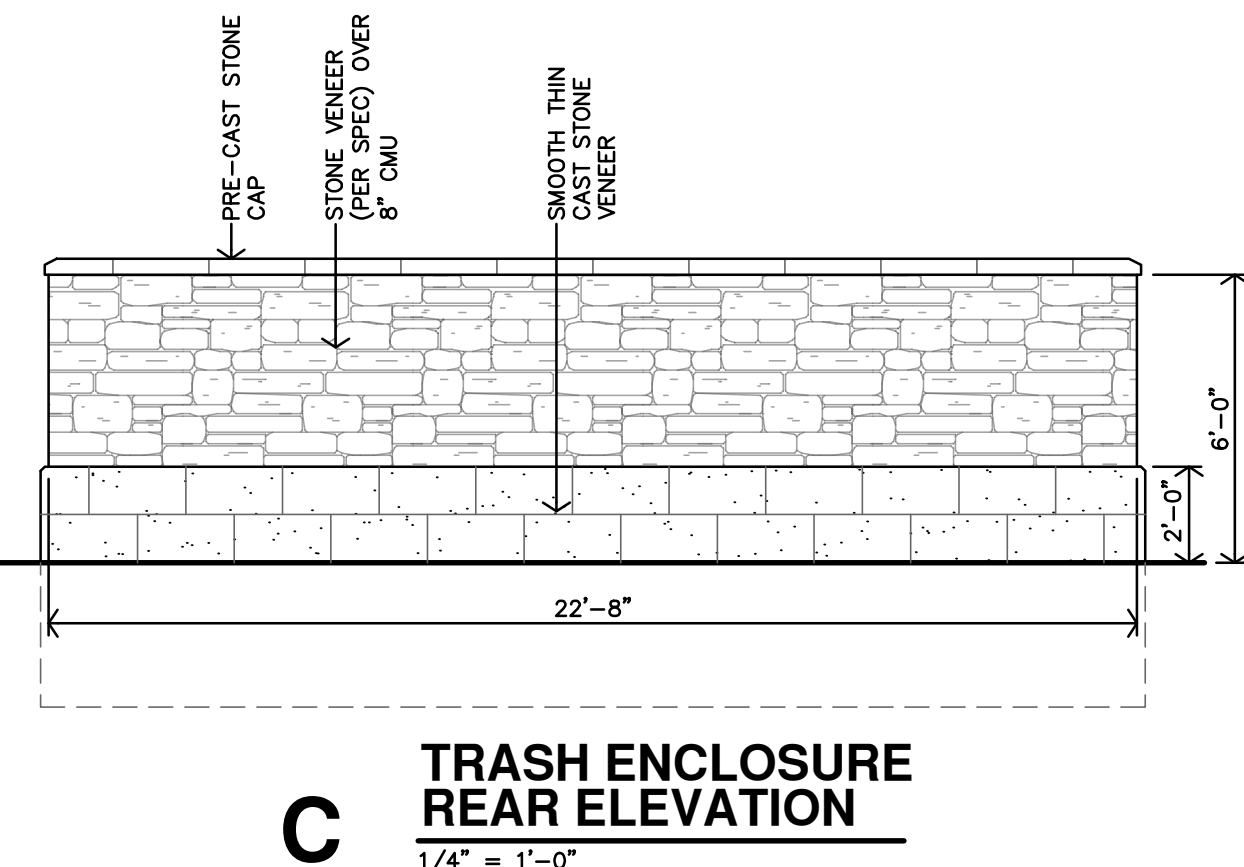
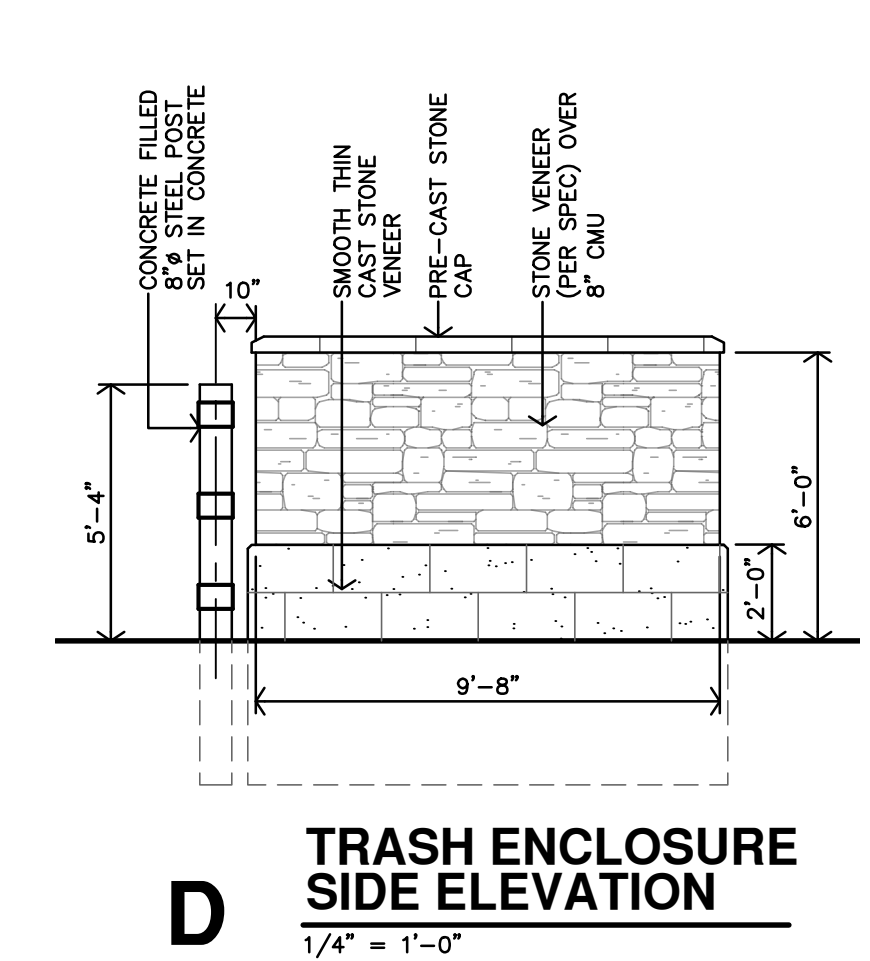
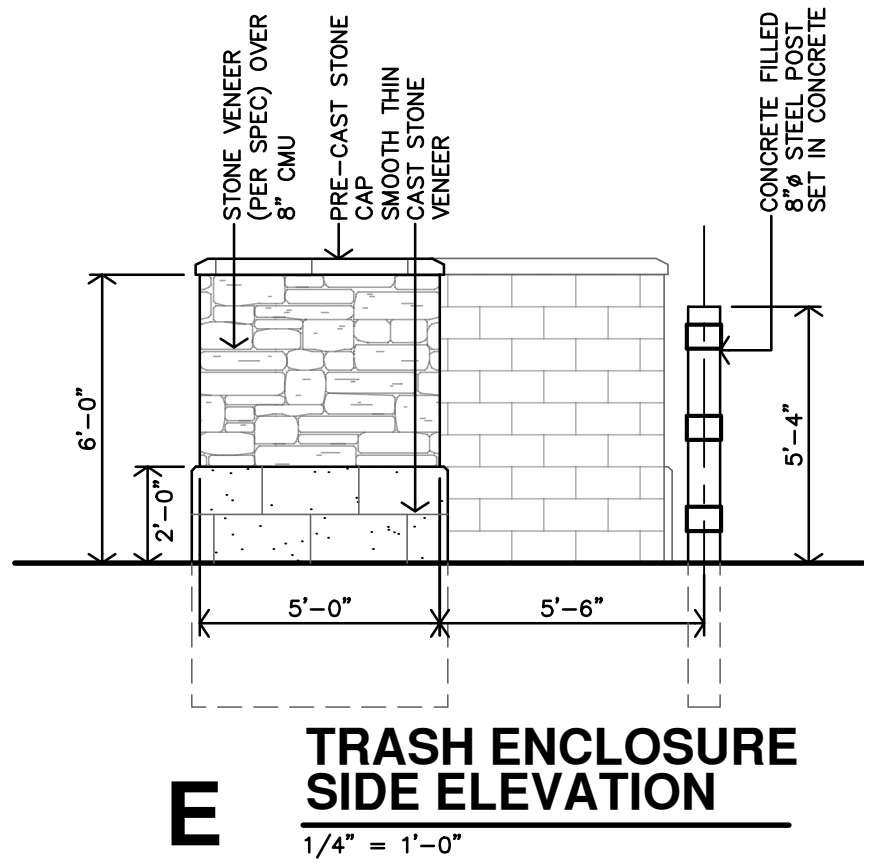
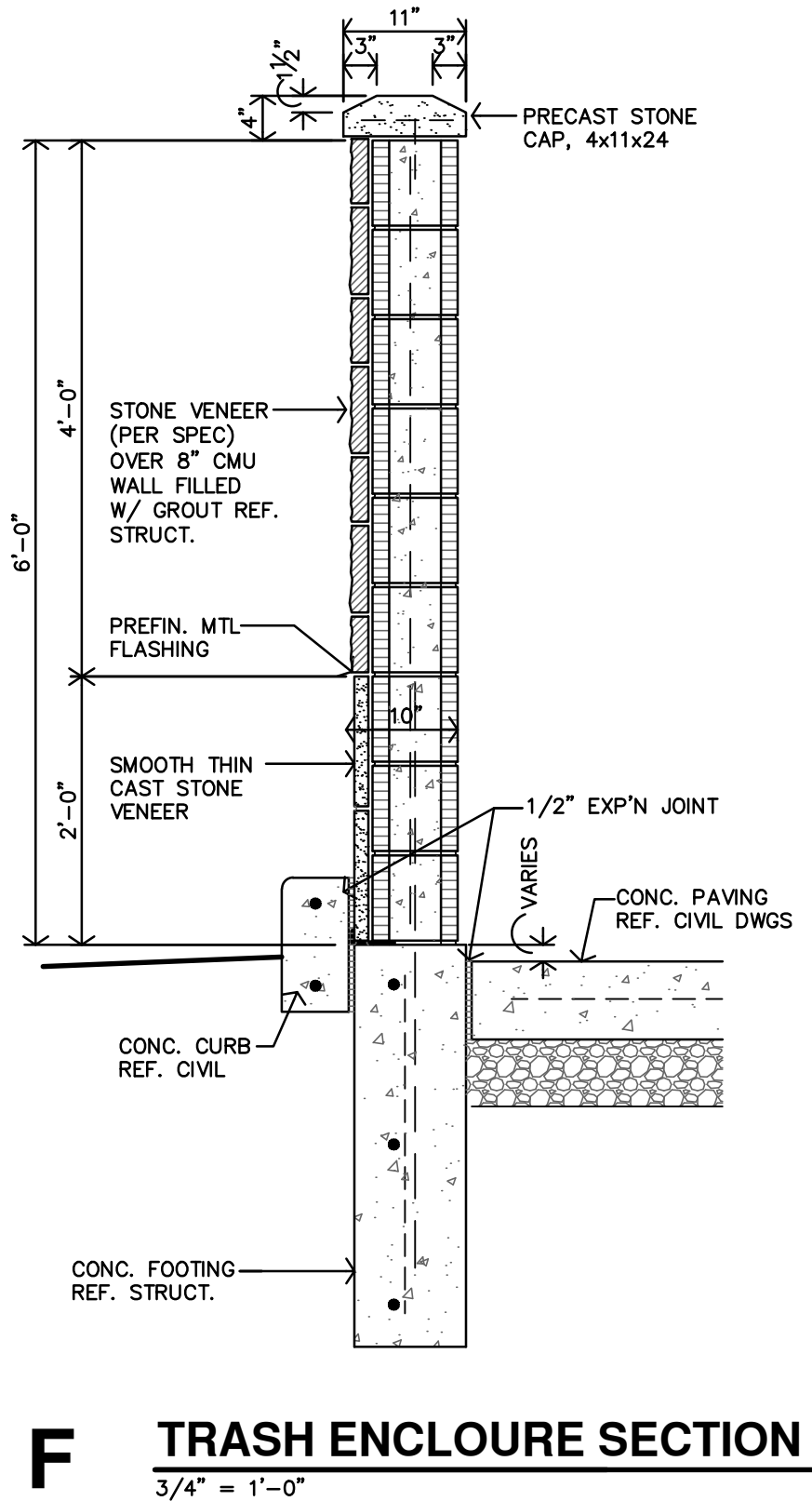
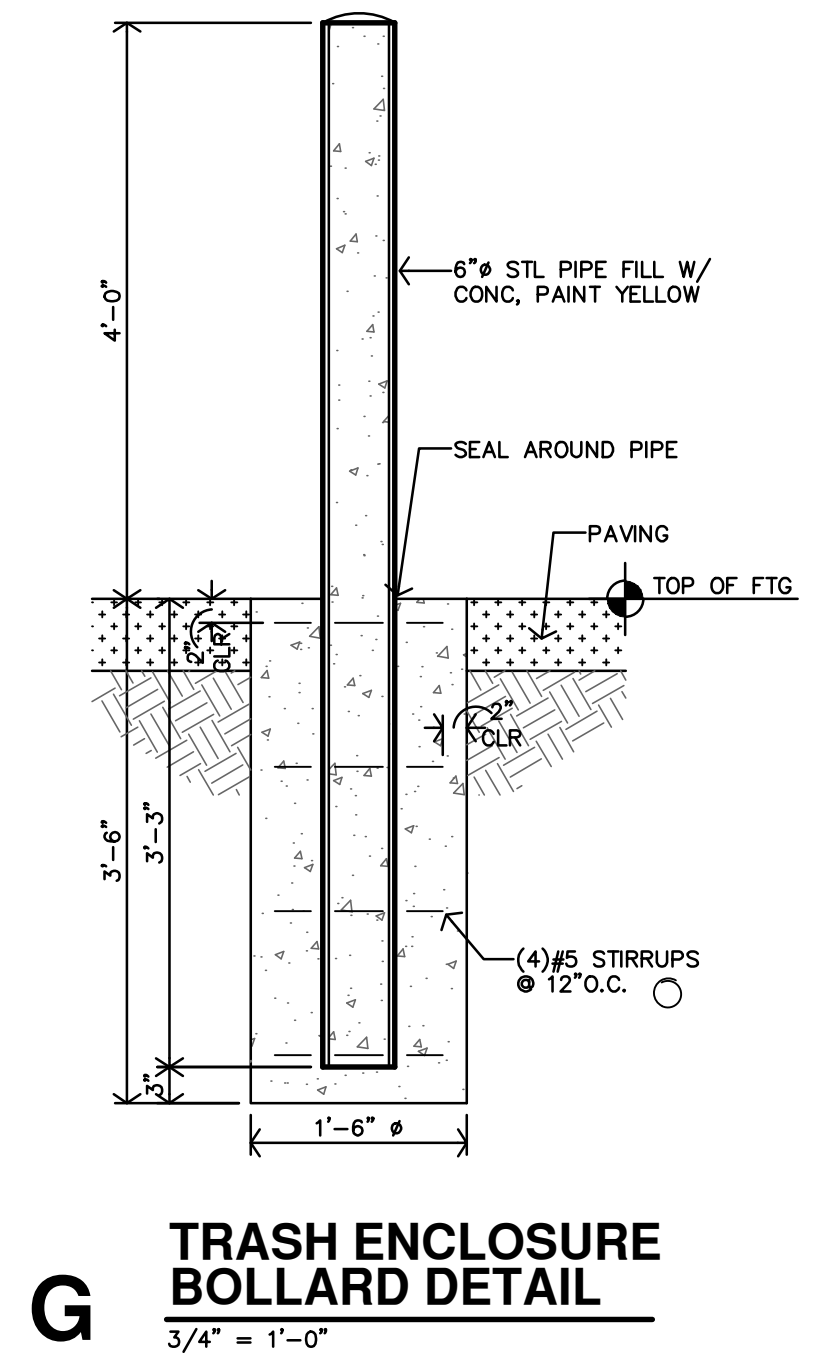
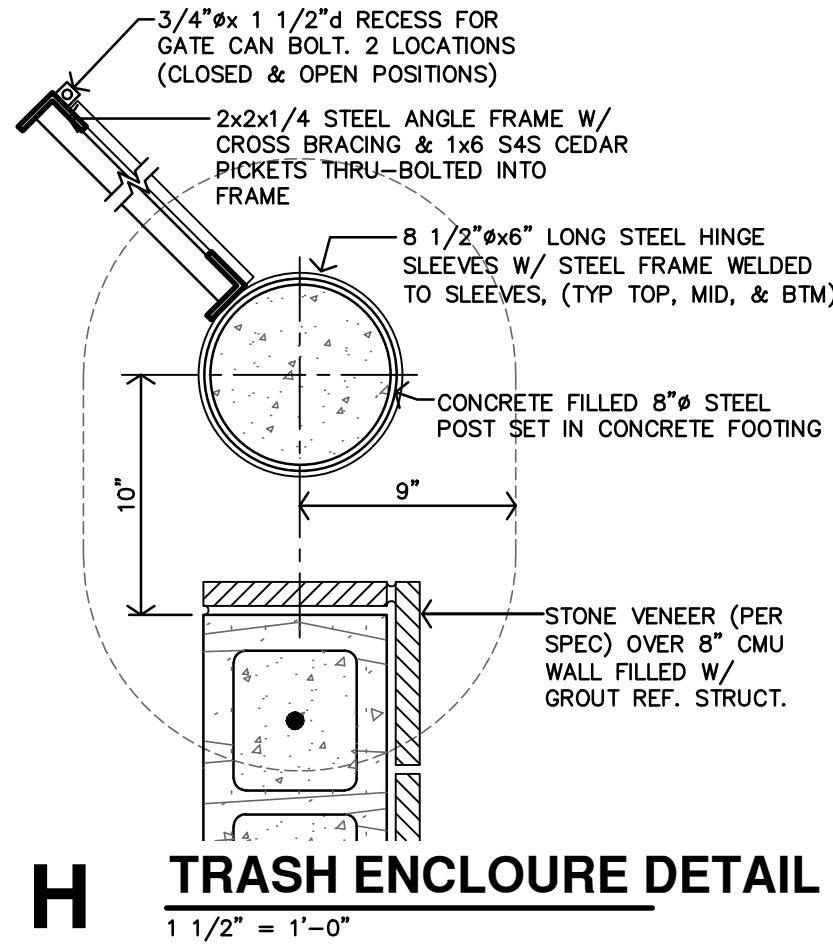
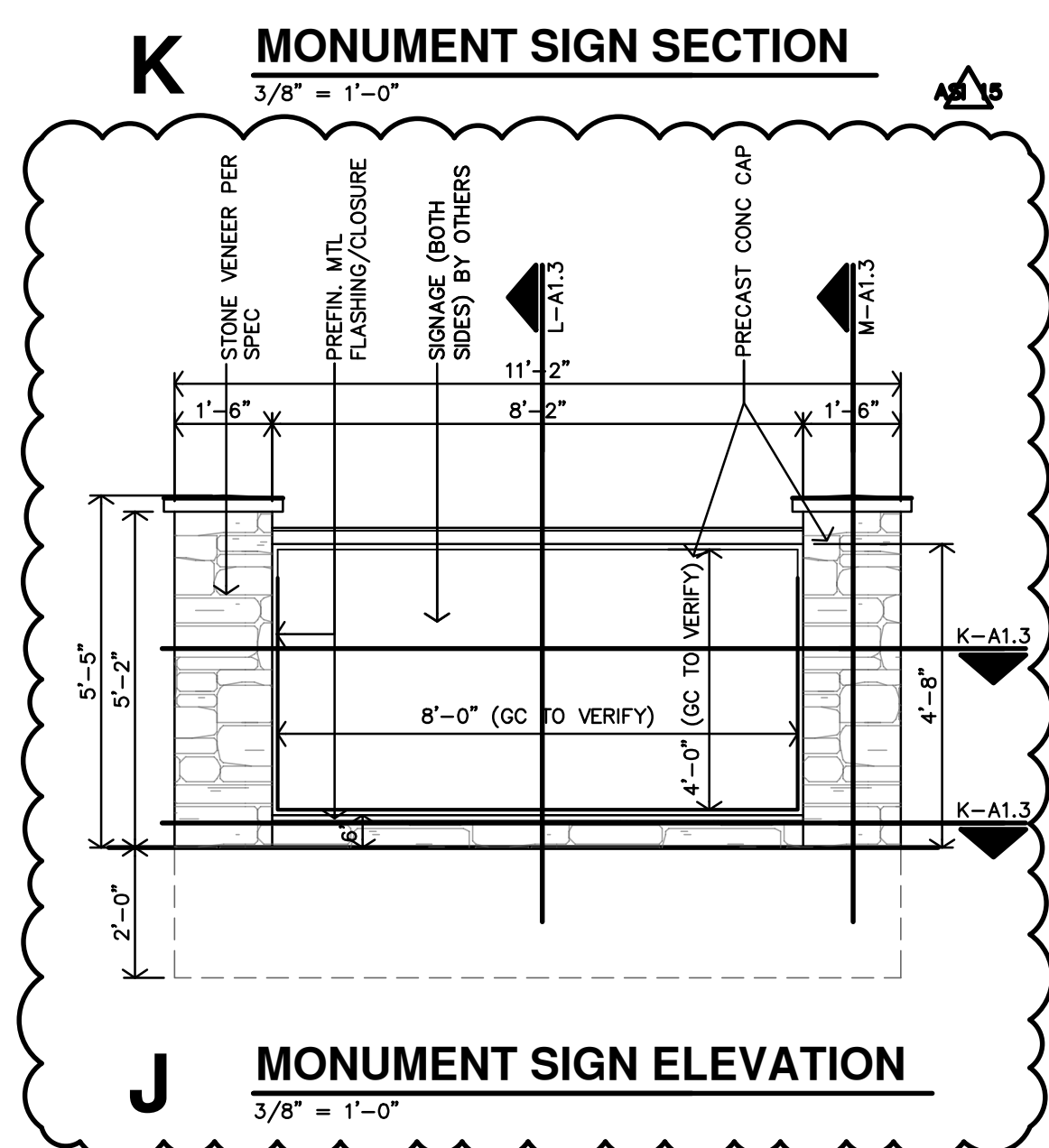
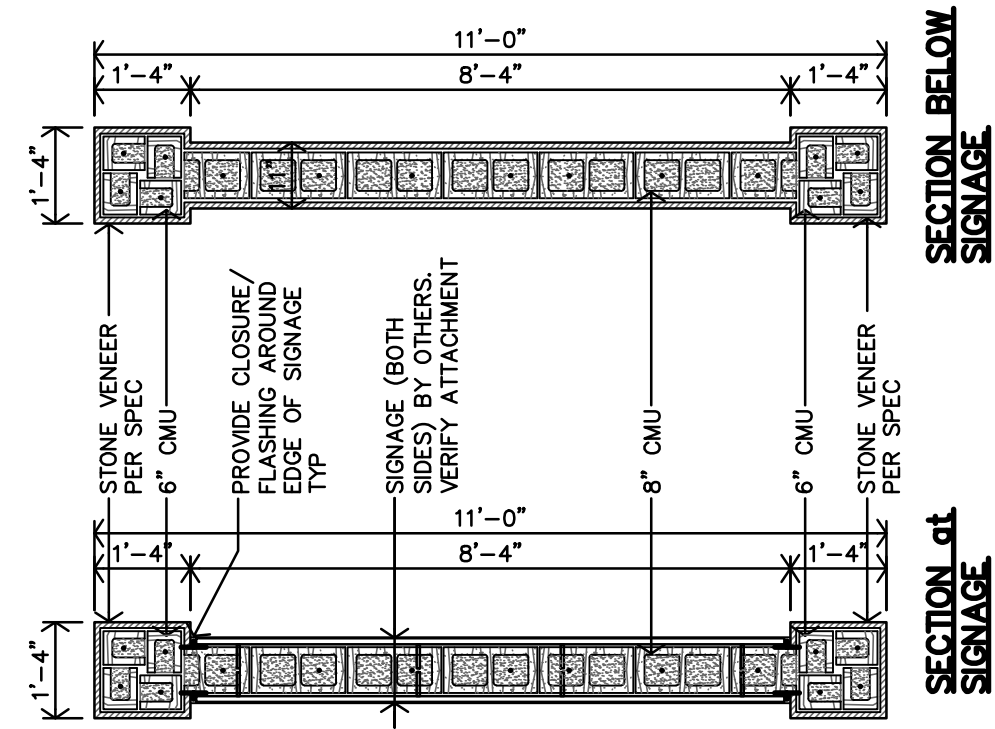
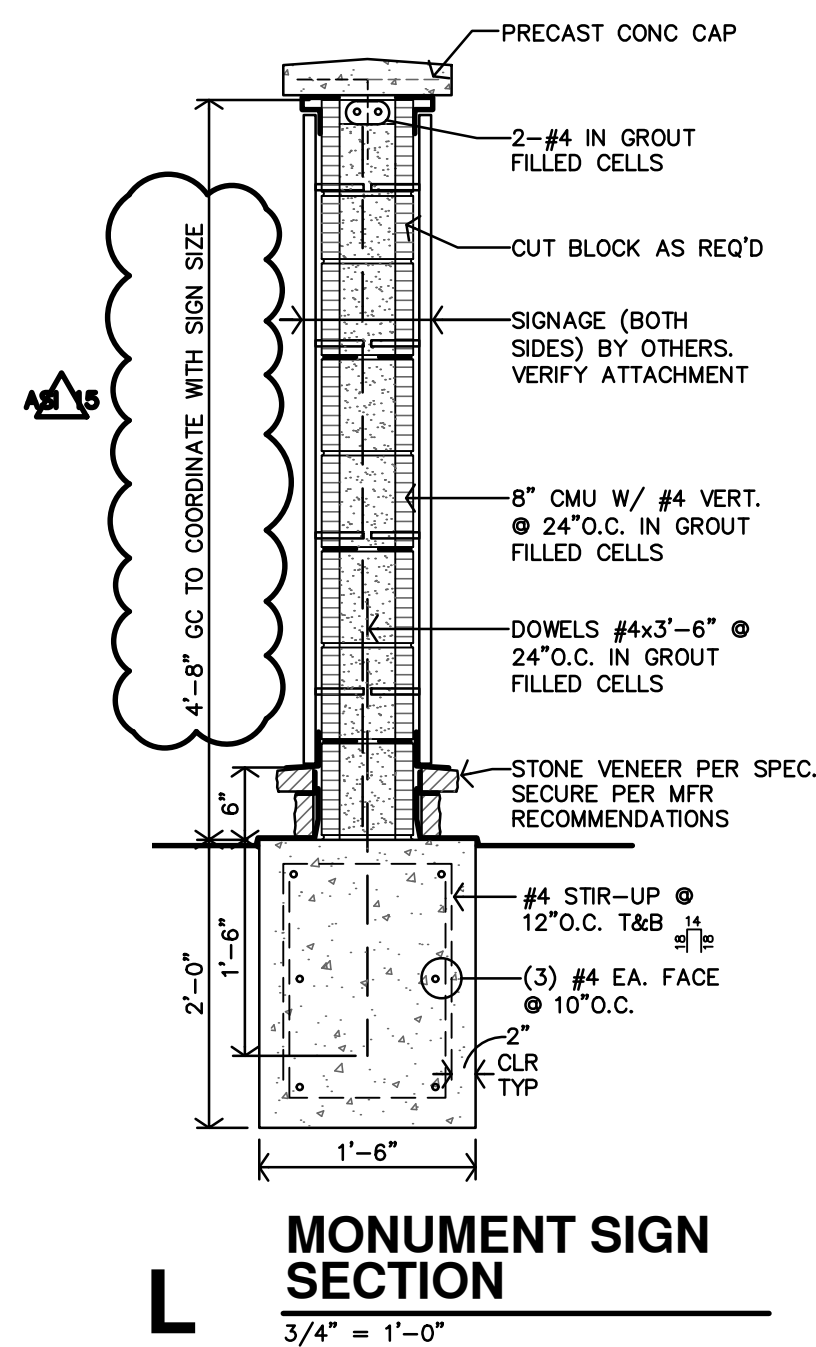
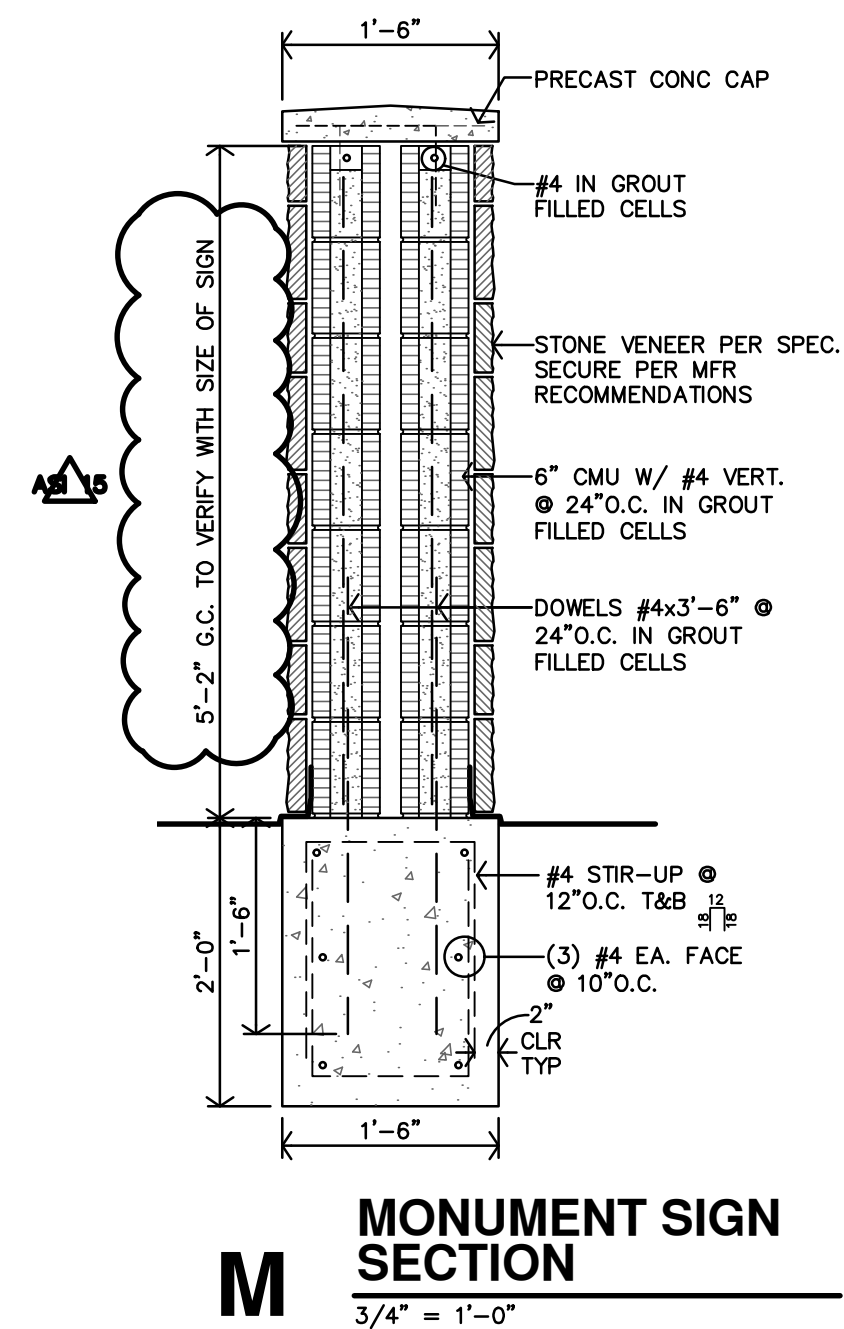
1. Revised Sheet A1.3 and A4.6

Issued by:

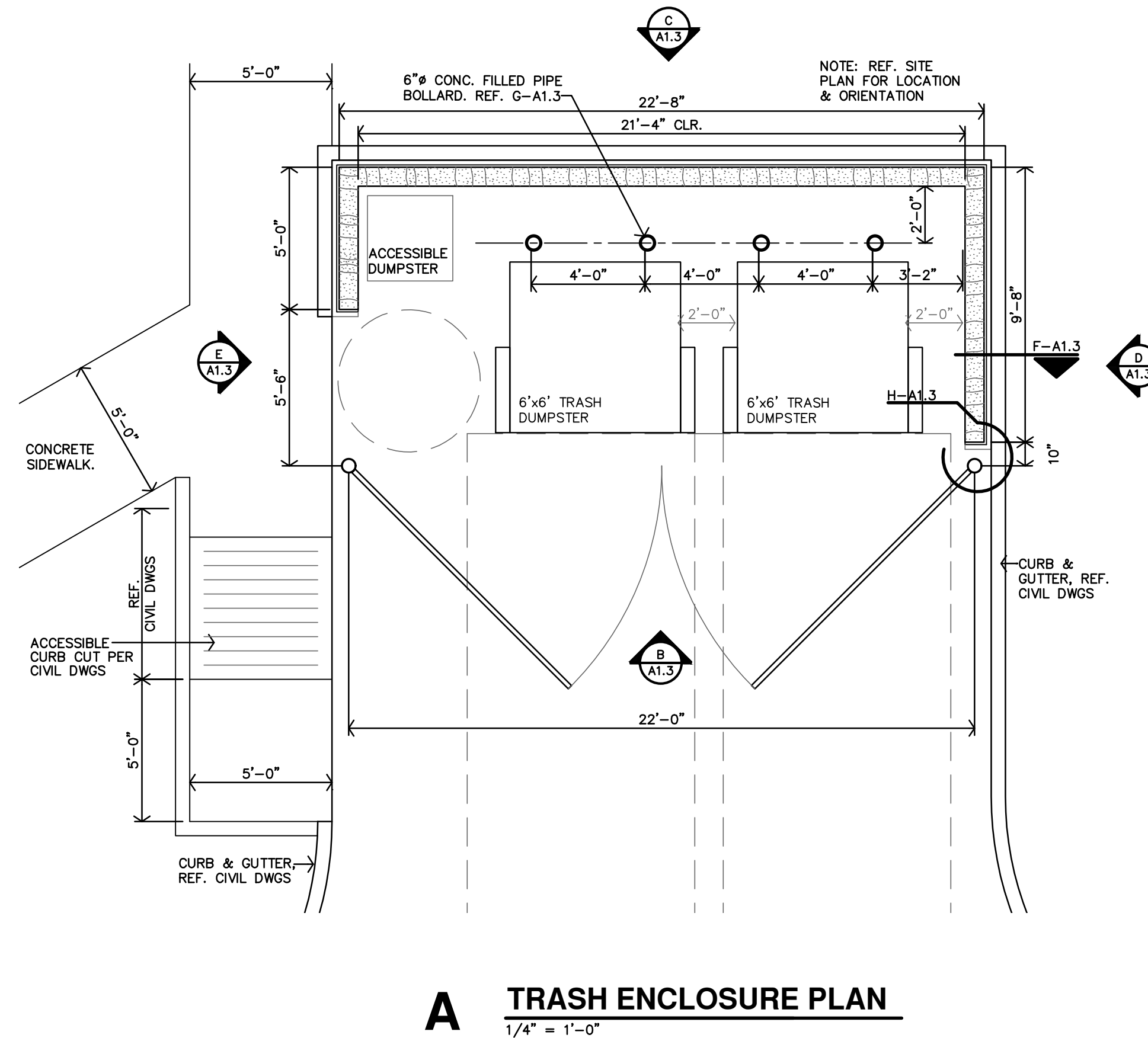
Jones Gillam Renz Architects PO Box 2928, Salina, KS 67402
Maggie Gillam, Project Manager 785-827-0386 mjgillam@jgrarchitects.com

Copies to:

MCP Group – Mike Maas, Cliff Holland, Tim Johnson, Kelli Meiers
OPG - Dan Maximuk, Amanda Klaus, Austin Kack, Katie Jardieu
JGR Team - Maggie Gillam (JGR), Ryan Lies (LST), Cindy Senecal (McClure), Wesley Wooldridge (Renaissance), Michael Boerst (Heartland Energy)



DO NOT CONSTRUCT ANY PART OF THE TRASH PAD, ENCLOSURE AND/OR ACCESS TO, UNTILL AFTER CONFIRMATION AND COORDINATION OF LOCAL TRASH SERVICE. DUE TO DIFFERENT TRASH COMPANIES, TRUCKS AND PICK-UP PROCESSES, CONFIRMATION OF THE TRASH SERVICE AND COORDINATION OF THE DESIGN AND LAYOUT OF THE PAD, ENCLOSURE AND ACCESS MUST BE COMPLETED.



REVISION:	
DATE:	5-9-2025
JOB:	24-3446
SHEET NO.:	



REVISION:	
A002	6-10-2025
AS 4	10-30-2025
AS 5	6-19-2025
DATE:	5-9-2025
JOB:	24-3446
SHEET NO.:	

