



Jones Gillam Renz Architects

Address

730 N 9th St.
Salina, KS 67401

1881 Main St., Suite 301
Kansas City, MO 64108

Contact

jgr@jgrarchitects.com
(785) 827-0386

Web

jgrarchitects.com

ARCHITECT'S SUPPLEMENTAL INSTRUCTIONS

JONES GILLAM RENZ DOCUMENT JGR 710

PROJECT: The Residence at Carter Lake
New Development
Carter Lake, IA

OWNER: OPG Carter Lake Partners, LLC
Dan Maximuk
254 N. Santa Fe Ave, Suite A
Salina, KS 67401

CONTRACTOR: Koester Construction Company
3050 SE Enterprise Dr.
Grimes, IA 50111

Report No. Two (2)

Date Dec. 8, 2025

Architect's Proj No. 25-3489

Contract For: General Construction
Mechanical, Electrical

The work shall be carried out in accordance with the following supplemental instructions issued in accordance with the Contract Documents without change in Contract Sum or Contract Time. Prior to proceeding in accordance with these instructions, indicate your acceptance of these instructions for minor change to the Work as consistent with the Contract Documents and return a copy to the Architect.

DESCRIPTION:

- 1) Contractor to make adjustments as needed and required per the modifications as indicated on attached drawings and in the below descriptions:
 - a. Corrections made to fixture schedule as corresponding with RFI #14

Attachments:

1. Revised MEP Sheet P6.1

Issued by: Jones Gillam Renz Architects PO Box 2928, Salina, KS 67402
Maggie Gillam, Project Manager 785-827-0386

mgillam@jgrarchitects.com

Copies to:

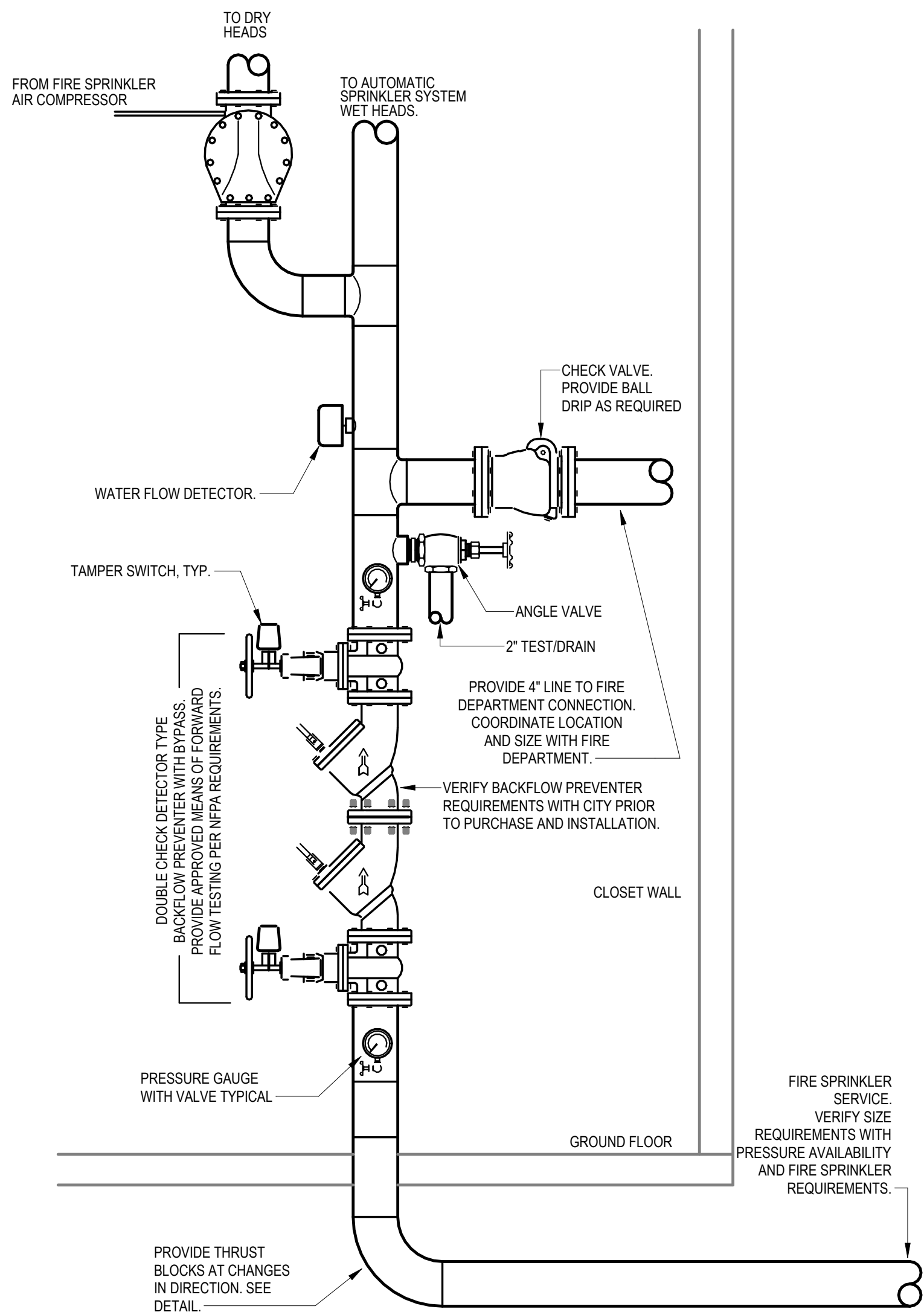
Koester Construction
OPG - Dan Maximuk, Austin Kack, Amanda Klaus, Katie Jardieu
LST - Ryan Lies
Structural - Isaac Cundiff, Marcus Himmelberg
Civil - Elizabeth Hunter

DOMESTIC WATER EQUIPMENT SCHEDULE

GENERAL: • PROVIDE FIXTURES WITH ALL TRIM NECESSARY FOR COMPLETE INSTALLATION.

NOTES: 1. PROVIDE WALL HUNG PLATFORM FOR WATER HEATER EQUAL TO HOLDRITE #60SWHP-W. COORDINATE EXACT LOCATION AND MOUNTING HEIGHT...
2. PUMP SHALL HAVE CONTROLS TO PREVENT STARTUP WITHIN 5 MINUTES FROM THE END OF THE PREVIOUS HEATING CYCLE. HOT WATER RECIRCULATION SYSTEM SHALL MEET ALL REQUIREMENTS OF THE 2015 IECC

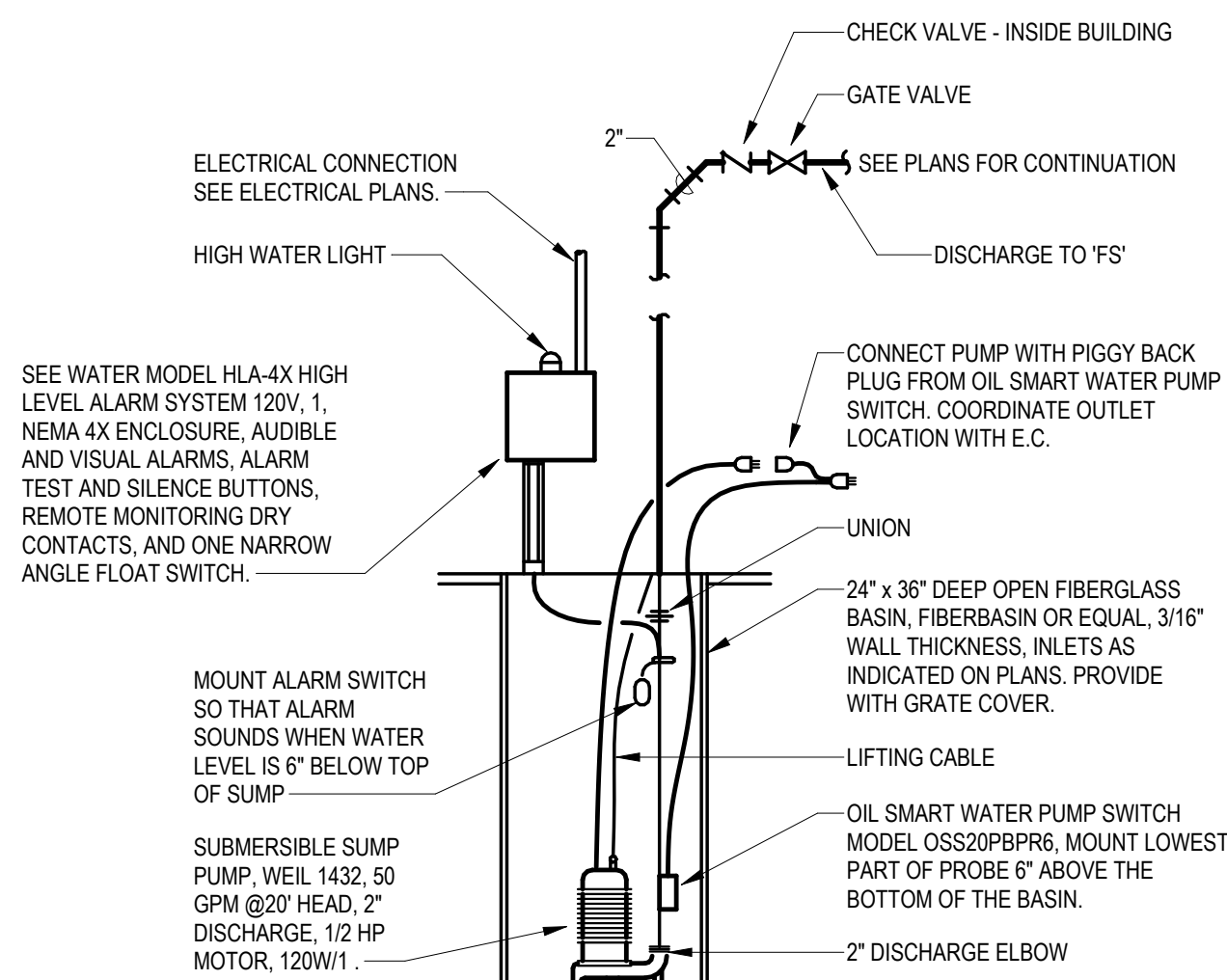
MARK	MANUFACTURER	MODEL	DESCRIPTION	NOTES
HWH-A	AO Smith	EETU-40	40 GALLON ELECTRIC WATER HEATER, 0.93 UEF, 4500 WATTS, 208V HEATING ELEMENT, 21 GPH RECOVERY @ 90°F TEMP RISE. SUPPLIED WITH TEMPERATURE AND PRESSURE RELIEF VALVE AND BRASS DRAIN VALVE. WATER HEATER SHALL HAVE TEMPERATURE CONTROLS SET TO LIMIT SUPPLY TEMPERATURE TO 120°F OR LESS.	---
HWH-B	AO Smith	EJCS-20	20 Gallon electric water heater, 2500 watts, 120v heating element, 11 GPH recovery @ 90°F temp rise. Supplied with temperature and pressure relief valve and brass drain valve. Water heater shall have temperature controls set to limit supply temperature to 120°F or less.	1
HWP	Bell & Gossett	NBF-33	Circulation pump, bronze body, 10 gpm @ 10' head, 120 VAC. Provide clamp-on aquastat for pump control.	2



4

FIRE PROTECTION RISER DIAGRAM

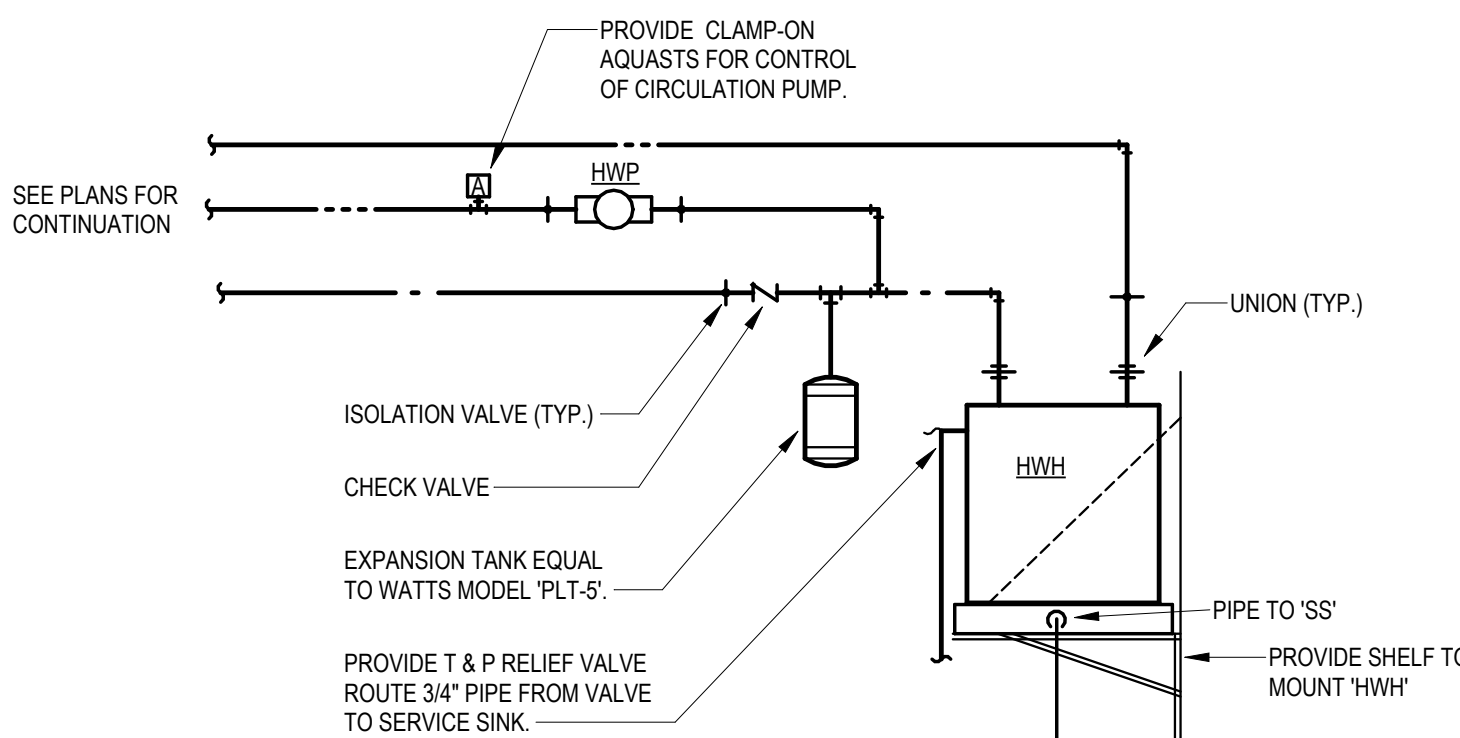
NO SCALE



3

ELEVATOR SUMP PUMP DIAGRAM

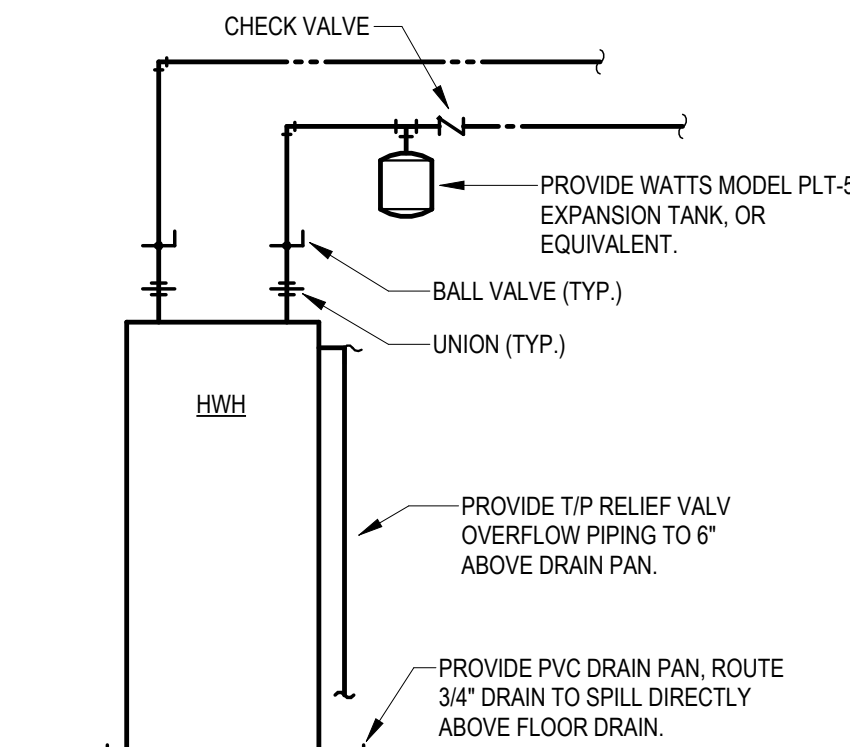
NO SCALE



2

WATER HEATER ON SHELF PIPING DIAGRAM

NO SCALE



1

APARTMENT WATER HEATER DIAGRAM

12\"/>

PLUMBING FIXTURE SCHEDULE											
GENERAL: • PROVIDE FIXTURES WITH ALL TRIM NECESSARY FOR COMPLETE INSTALLATION. • VENT SIZES ARE APPLICABLE ONLY FOR INDIVIDUAL FIXTURE VENTS WHERE ALTERNATE VENTING METHOD HAS NOT BEEN INDICATED ON PLANS. • PROVIDE 1/4 TURN STOP VALVES ON ALL HOT AND COLD WATER SUPPLY LINE CONNECTIONS FOR FIXTURES. SHOWER VALVES SHALL HAVE INTEGRAL STOP VALVES. • PROVIDE FLOOR DRAINS AND FLOOR SINKS WITH TRAP PRIMER OR TRAP PRIMER ALTERNATIVE EQUIVALENT TO PREVENT TRAP GUARD. PROVIDE AUTOMATIC TRAP PRIMER DEVICE WITH SINGLE OR MULTIPLE OUTLET PIPES AND ROUTE DRAINS TO PRIMER PORTS.											
MARK	MANUFACTURER	MODEL	PRODUCT DESCRIPTION	TRIM	ROUGH-IN SIZES			COLD	HOT	ADA COMPLIANT	NOTES
					DRAIN	VENT	WATER				
BS	BLANCO	443047	SINGLE COMPARTMENT 18 GA STAINLESS STEEL SINK, UNDERMOUNT, 23\"/>	DELTA MODEL 19802Z-SP-DST SINGLE HANDLE KITCHEN SINK FAUCET WITH PULL DOWN HOSE SPRAY. STAINLESS FINISH. PROVIDE BASKET STRAINER.	2"	1 1/2"	1/2"	Yes	Yes	Yes	
CCB	SIOUX CHIEF	696-2313	RECESSED WASHING MACHINE BOX WITH 2\"/>		2"	1 1/2"	1/2"	Yes	Yes		
DB	SIOUX CHIEF	696-3	DRAINAGE BOX BOX WITH 2\"/>		2"	1 1/2"	0"	No	No		
EWC	MURDOCK	A172100F-UG-BF12	DUAL LEVEL SELF-CONTAINED WATER COOLER WITH STAINLESS STEEL BASIN, FRONT PUSH BUTTON ACTUATORS, SENSOR OPERATED BOTTLE FILLER, LEAD-FREE COOLING SYSTEM, 120 VOLTS.		2"	1 1/2"	1/2"	Yes	No	Yes	
FD-A	WATTS	FD-100-A	EPOXY COATED CAST IRON FLOOR DRAIN WITH ANCHOR FLANGE, REVERSIBLE CLAMPING COLLAR WITH PRIMARY AND SECONDARY WEEPHOLES, ADJUSTABLE ROUND HEEL PROOF NICKEL BRONZE STRAINER.	TRAP PROTECTION DEVICE EQUIVALENT TO PROSET TRAPGUARD	2"	2"					
FD-B	WATTS	FD-100-C-F16	EPOXY COATED CAST IRON FLOOR DRAIN WITH ANCHOR FLANGE, REVERSIBLE CLAMPING COLLAR WITH PRIMARY AND SECONDARY WEEPHOLES, ADJUSTABLE ROUND HEEL PROOF NICKEL BRONZE STRAINER.	TRAP PROTECTION DEVICE EQUIVALENT TO PROSET TRAPGUARD	2"	2"					
FS	WATTS	FS-748	18\"/>	TRAP PROTECTION DEVICE EQUIVALENT TO PROSET TRAP GUARD	2"	2"					
ICB	SIOUX CHIEF	696-G1010	ICE MAKER CONNECTION BOX WITH 1/4 TURN BALL VALVE AND INTEGRAL HAMMER ARRESTOR.		0"	0"	1/2"	Yes	No		
KS	JUST	DLADA1829A65-J	TWO COMPARTMENT 18 GA STAINLESS STEEL SINK, SELF RIMMING, (12\"/>	DELTA MODEL 19802Z-SP-DST SINGLE HANDLE KITCHEN SINK FAUCET WITH PULL DOWN SPRAYER, STAINLESS FINISH. PROVIDE BASKET STRAINER.	2"	1 1/2"	1/2"	Yes	Yes	Yes	
LAV	AMERICAN STANDARD	0610.000.020	UNDERMOUNT LAVATORY, WHITE VITREOUS CHINA, 20\"/>	DELTA MODEL 559H-559HAR-SS-DST SINGLE HANDLE FAUCET, STAINLESS FINISH. LEONARD MODEL TM-1 POINT OF USE MIXING VALVE. PROVIDE GRID DRAIN.	2"	1 1/2"	1/2"	Yes	Yes	Yes	
LAV-B	AMERICAN STANDARD	0610.000.020	UNDERMOUNT LAVATORY, WHITE VITREOUS CHINA, 20\"/>	MOEN MODEL 84774BL SINGLE HANDLE FAUCET, BLACK FINISH. LEONARD MODEL TM-1 POINT OF USE MIXING VALVE. PROVIDE GRID DRAIN.	2"	1 1/2"	1/2"	Yes	Yes	Yes	
SHA	AQUA BATH CO.	C4136BF-OF-FUX 3/4"	CENTER DRAIN OPTION, REINFORCED FIBERGLASS ADA BASE MODEL SHOWER, 36\"/>	DELTA MODEL R10000-UNWS/T13H152 SINGLE HANDLE PRESSURE-BALANCING VALVE, 1.5 GPM HAND SHOWER WITH DOUBLE CHECK VALVES, FLEXIBLE HOSE, 24\"/>	2"	1 1/2"	1/2"	Yes	Yes	Yes	
SH-B	AQUATIC	13636FHARRF	CAST ACRYLIC SHOWER, 36\"/>	DELTA MODEL R10000-UNWS/T13H132 SINGLE HANDLE PRESSURE-BALANCING VALVE, 1.5 GPM PUSH-CLEAN SHOWERHEAD.	2"	1 1/2"	1/2"	Yes	Yes	No	
SH-C	AQUARIUS	G-6233-BF-.75	REINFORCED FIBERGLASS ADA ROLL-IN SHOWER, 60\"/>	DELTA MODEL R10700-UNWS/T13H333 SINGLE HANDLE PRESSURE-BALANCING VALVE, 1.5 GPM HAND SHOWER WITH DOUBLE CHECK VALVES, FLEXIBLE HOSE, 24\"/>	2"	1 1/2"	1/2"	Yes	Yes	Yes	
SS	PLAT	MSD-2424	ONE-PIECE MOLDED STONE TOP BASIN, 24\"/>	CHICAGO FAUCET MODEL 887-565 FAUCET WITH HOSE THREAD OUTLET, VACUUM BREAKER SPOUT, PAIL HOOK, WALL BRACE, INTEGRAL CHECK VALVES, METAL LEVER HANDLE.	3"	1 1/2"	3/4"	Yes	Yes	No	
WC-A	AMERICAN STANDARD	215AA.104	FLUSH TANK WATER CLOSET, WHITE VITREOUS CHINA, 3\"/>	WHITE CLOSED FRONT SOFT CLOSE PLASTIC SEAT WITH LID	4"	2"	1/2"	Yes	No	Yes	
WC-B	AMERICAN STANDARD	215AA.104	FLUSH TANK WATER CLOSET, WHITE VITREOUS CHINA, 3\"/>	WHITE CLOSED FRONT SOFT CLOSE PLASTIC SEAT WITH LID	3"	2"	1/2"	Yes	No	Yes	
WC-C	AMERICAN STANDARD	215AA.104	FLUSH TANK WATER CLOSET, WHITE VITREOUS CHINA, 3\"/>	WHITE OPEN FRONT SOFT CLOSE PLASTIC SEAT	4"	2"	1/2"	Yes	No	Yes	
WH	WOODFORD	B67	AUTOMATIC DRAINING FREEZELESS WALL HYDRANT WITH ASSE 1052 DOUBLE CHECK BACKFLOW PREVENTOR, LOOSE TEE KEY HANDLE, WITH RECESSED BOX WITH DOOR. PROVIDE WITH CHROME PLATED EXTERIOR FINISH.				3/4"	Yes	No	No	