



**Jones Gillam Renz Architects**

**Address**

730 N 9th St.  
Salina, KS 67401

1881 Main St., Suite 301  
Kansas City, MO 64108

**Contact**

jgr@jgrarchitects.com  
(785) 827-0386

**Web**

jgrarchitects.com

**NOTICE TO ALL CONTRACTORS AND SUB-CONTRACTORS**

**September 15, 2025**

**CKMHC – Children Services, Building Renovation – JGR Proj #24-3459**

**ADDENDUM NO. 2**

YOU ARE INSTRUCTED TO READ AND TO NOTE THE FOLLOWING DESCRIBED CHANGES, CORRECTIONS, CLARIFICATIONS, OMISSIONS, DELETIONS, ADDITIONS, APPROVALS, AND STATEMENTS PERTINENT TO THE CONTRACT AND CONSTRUCTION DOCUMENTS. THIS ADDENDUM IS A PART OF THE CONTRACT AND CONSTRUCTION DOCUMENTS AND SHALL GOVERN IN THE PERFORMANCE OF THE WORK.

**Bid Date: Thursday, September 18, 2025 to JGR Architects by 2:00 pm**

**GENERAL**

1. General Contractors shall include an allowance of \$10,000 for the Cost of the Building Permit.

**ARCHITECTURAL – Drawings**

1. Sheet L1.0 Landscape Plan – Replace this sheet with the revised Sheet L1.0 included with this addendum. Note, all landscaping is to be bid per Alternate #5.
2. Sheet I1.0 Irrigation Plan – Add this sheet to the bid drawings. Note, all landscaping and associated irrigation is to be bid per Alternate #5.

Receipt of this Addendum shall be noted on the Bid Form.

**END OF ADDENDUM NO. 2**

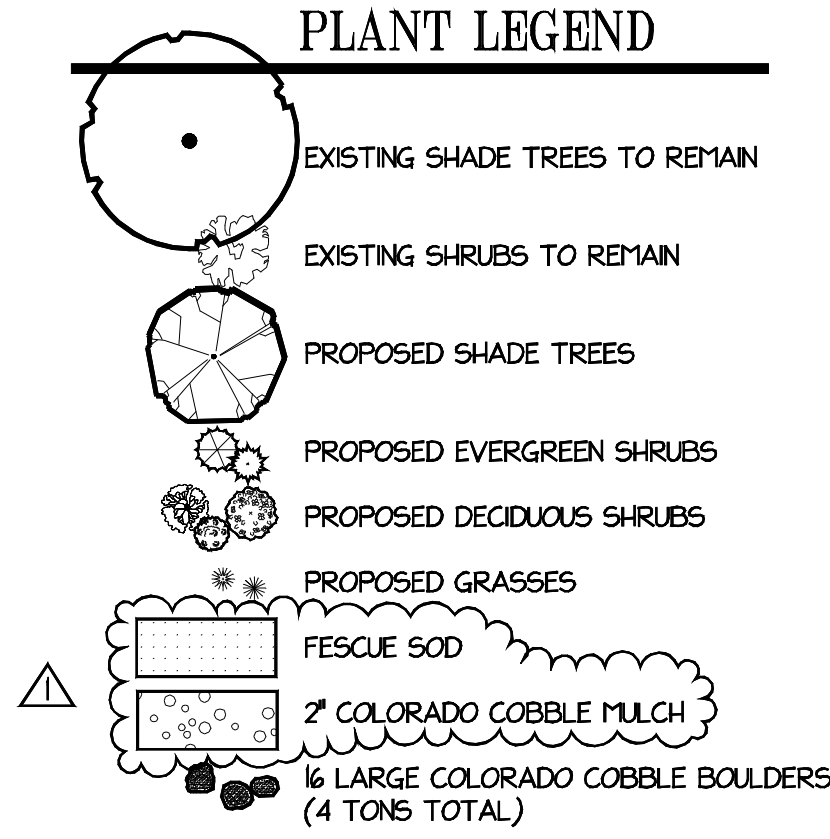
Attachments

Sheet L1.0  
Sheet I1.0

PLANT SCHEDULE

Qty	Common Name	Size
<b>Trees</b>		
3	BRANDYWINE MAPLE	2' Cd.
<b>Shrubs</b>		
3	BALITIGER (TIGER EYES®) STAGHORN SUMAC	3 Gal.
3	COLOR GUARD YUCCA	3 Gal.
1	CONOY BURKWOOD VIBURNUM	3 Gal.
6	DENSIFORMIS ANGLOJAPANESE YEW	3 Gal.
13	ENDLESS SUMMER BLOOMSTRUCK HYDRANGEA	3 Gal.
2	GREY OWL JUNIPER	3 Gal.
<b>Ornamental Grasses</b>		
42	KARL FOERSTER FEATHER REED GRASS	2 Gal.
28	SHENANDOAH SWITCHGRASS	2 Gal.

PLANT LEGEND



LANDSCAPE NOTES

- EXISTING LAWN AREAS SHALL BE PRESERVED AS MUCH AS POSSIBLE FROM CONSTRUCTION ACTIVITIES.
- FINE GRADE & SOD LAWN AREAS DESIGNATED ON PLAN WITH A FESCUE BLEND HARDY TO THIS AREA (REFER TO PLANT LEGEND).
- REMOVE ALL EXISTING PLANTS FROM FRONT FOUNDATION OF BUILDING, INCLUDING EXISTING ROCK AND PLASTIC EDGING.
- INSTALL 6 INCHES OF TOPSOIL IN LANDSCAPE BEDS & 25 LBS. OF SULFUR PER 1000 SQ. FT.
- ADD 4 YARDS/1000 s.f. OF QUALITY COMPOST IN BEDS, TILL/PREP AND FINE GRADE BEDS FOR PLANTS.
- INSTALL 2' COLORADO RIVER COBBLE OVER WEED BARRIER FABRIC IN ALL NEW BEDS AS SHOWN ON PLAN (REFER TO PLANT LEGEND).
- ALL NEWLY PLANTED TREES SHALL BE STAKED AND MULCHED WITH DOUBLE GROUND HARDWOOD OR CYPRESS MULCH.
- FOR IRRIGATION INSTALLATION REFER TO PLAN SHEET 110.
- INSTALL 1/8" THICK STEEL EDGING BETWEEN NEW PLANT BEDS AND LAWN AREAS. EDGING SHALL BE COATED WITH BROWN RUSTOLEUM PAINT.
- TREES SHOWN ON PLAN TO REMAIN, SHALL HAVE ROOT ZONES PROTECTED FROM CONSTRUCTION ACTIVITIES.
- FOR WARRANTIES AND OTHER LANDSCAPE SPECIFICATIONS, REFER TO THE CITY OF SALINA LANDSCAPE AND SODDING WRITTEN SPECIFICATIONS.
- FOR IRRIGATION INSTALLATION REFER TO PLAN SHEET 110.



1777 East Old Hwy 40  
New Cambria, KS 67470  
Phone: 785.822.6640  
Web: www.kssalinaland.com  
Email: info@kssalinaland.com

CENTRAL KANSAS MENTAL HEALTH  
124 IOWA AVENUE  
SALINA, KANSAS 67401

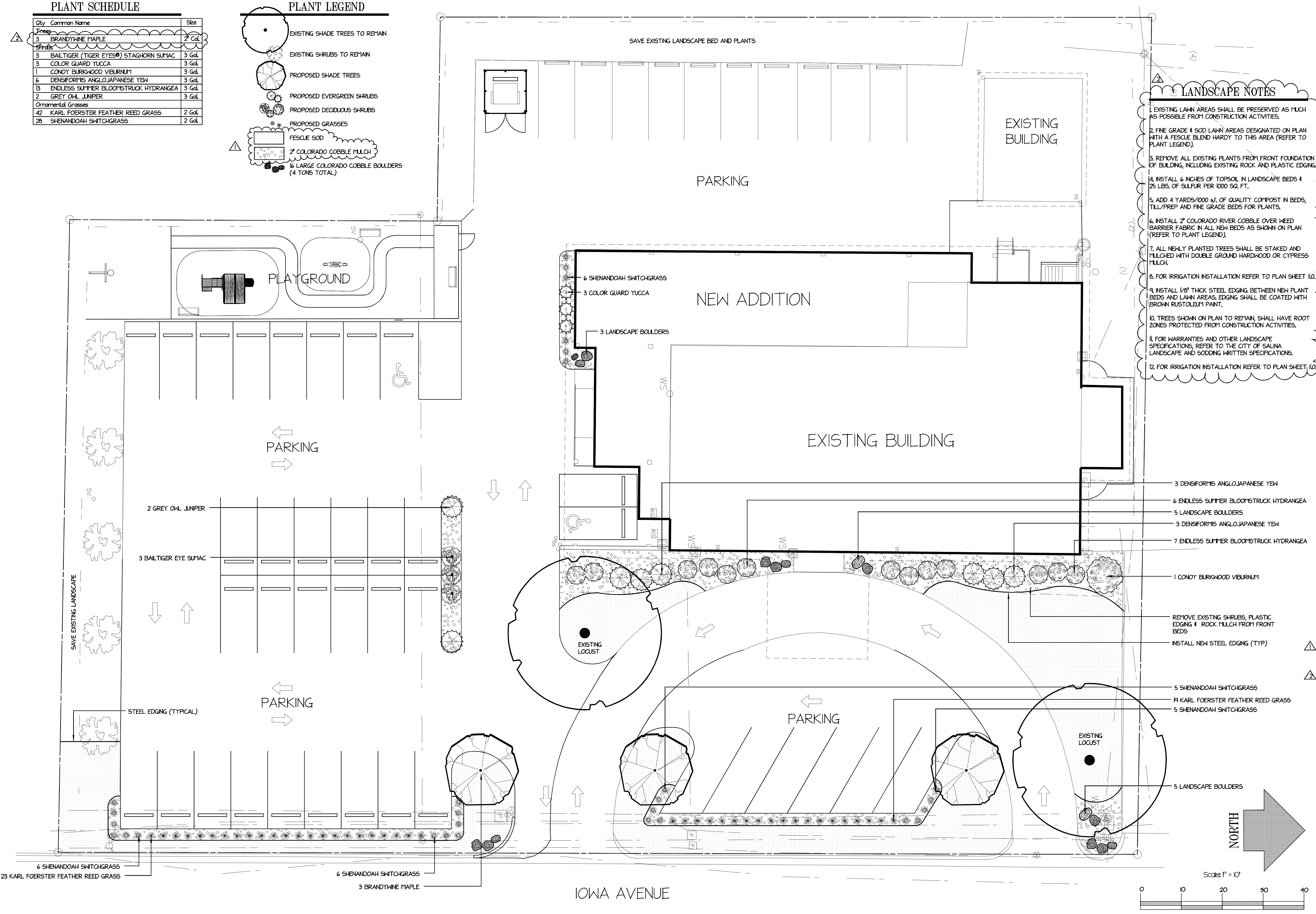
Revisions  
JULY 08, 2025  
Plant Legend  
SEPT. 08, 2025  
Plant SCHEDULE &  
LANDSCAPE NOTES

Date  
JUNE 10, 2025  
Project Number

Drawn By  
GLS  
Checked By  
GLS

Sheet Name  
LANDSCAPE PLAN

Sheet Number  
L1.0  
1 of 1





IRRIGATION SCHEDULE

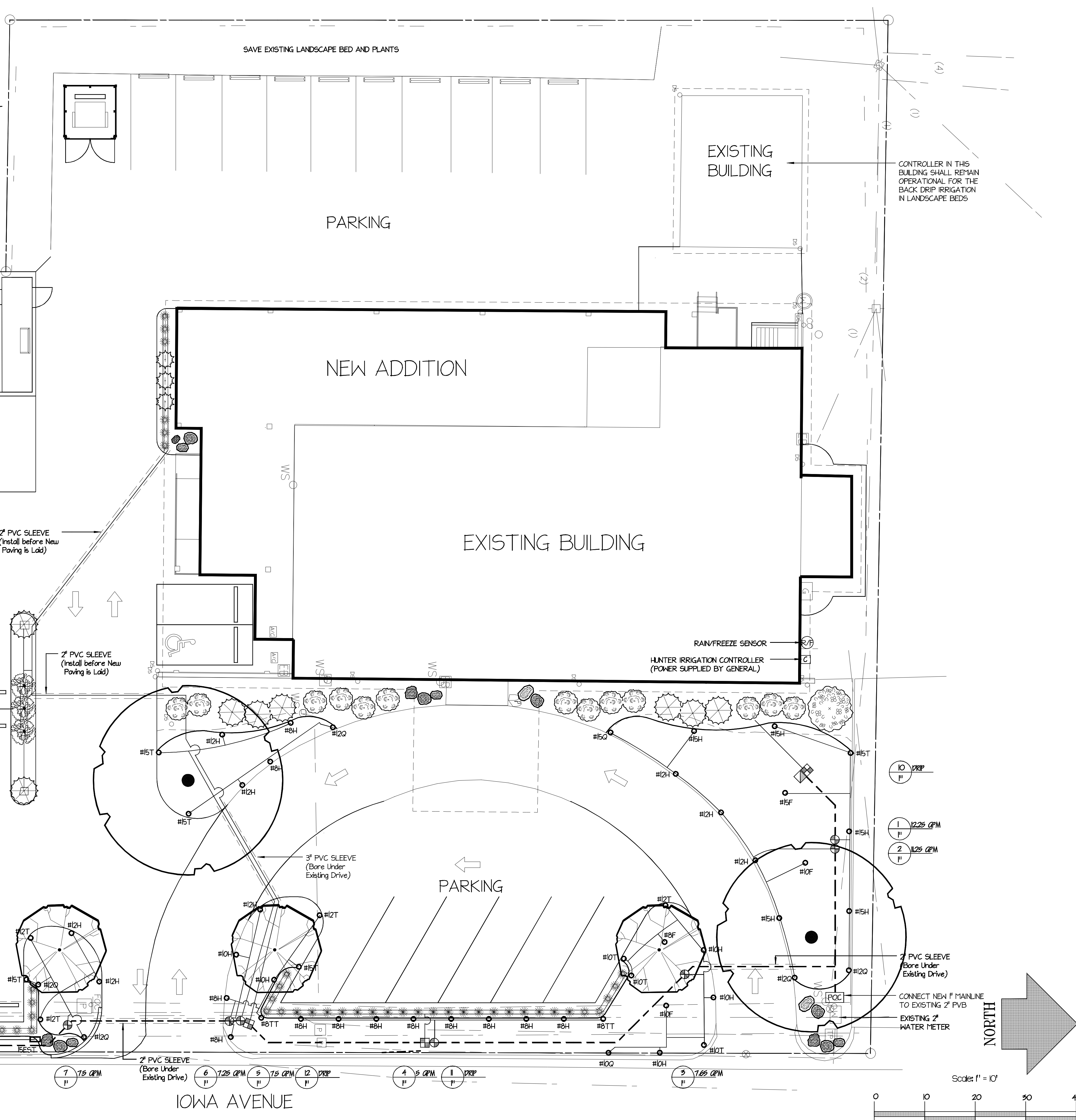
QTY.

IRRIGATION NOTES

POC	POINT OF CONNECTION (1" PVC PIPE)	1
DGV	1" DOUBLE CHECK VALVE BACKFLOW PREVENTER	1
C	HUNTER BASE UNIT PRO-C MODULAR 4 STA. CONTROLLER WITH HUNTER PLUG IN EXPANSION MODULE PCM-900	1
R/F	RAIN/FREEZE SENSOR	1
+	1" HUNTER P&V CONTROL VALVE	9
Q	1" QUICK COUPLER VALVE	2
○	HUNTER PRO SPRAY HEAD (with RAIN BIRD NOZZLES)	65
○	HUNTER PRO SPRAY HEAD (with RAIN BIRD STRIP NOZZLES)	7
---	1" PVC MAINLINE PRESSURE PIPE	290 FT.
---	1" PVC LATERAL LINE	790 FT.
---	1" DRIP ZONE VALVE	5
---	NETAFIM DRIP LINE PIPE	700 FT.
---	NETAFIM BLANK LINE PIPE	50 FT.
---	SCHEDULE 40 PVC SLEEVES (Size as indicated)	350 FT.
---	#18 MULTI-STRAND ELECTRIC ZONE WIRES - 19 Count (Not shown)	
#	Valve #	
→	Valve Flow	
#	Valve Size	

NOTE: General Contractor/Owner shall supply 110 volt power for Irrigation Controller.

1. INSTALL NEW AUTOMATED LAWN IRRIGATION SYSTEM IN ALL NEW LAWN AREAS. (REFER TO LANDSCAPE PLAN).
2. INSTALL NEW DRIP IRRIGATION SYSTEM IN NEW SHRUB BEDS. (REFER TO LANDSCAPE PLAN).
3. LAWN IRRIGATION COMPONENTS SHALL BE AS MANUFACTURED BY HUNTER INDUSTRIES. (REFER TO IRRIGATION SCHEDULE).
4. SYSTEM IS DESIGNED WITH RAIN BIRD SPRINKLER NOZZLES.
5. INSTALL COMMERCIAL GRADE HUNTER SPRINKLER HEADS & COMMERCIAL GRADE HUNTER SMART CONTROLLER. (REFER TO IRRIGATION SCHEDULE).
6. DRIP IRRIGATION SHALL BE A NETAFIM DRIP SYSTEM, DESIGNED PER MANUFACTURER'S RECOMMENDATIONS. (REFER TO IRRIGATION SCHEDULE).
7. CONTRACTOR SHALL INSTALL SYSTEM TO ACHIEVE 100 PERCENT COVERAGE.
8. INSTALL IRRIGATION MAINLINE AT 15" DEPTH.
9. INSTALL IRRIGATION LATERAL PIPING AT 10" DEPTH.
10. VALVE BOXES SHALL BE ADEQUATE SIZE FOR ALL COMPONENTS.
11. OWNER/GENERAL CONTRACTOR SHALL SUPPLY 110 VOLT POWER AT NE. CORNER OF BUILDING FOR THE NEW IRRIGATION CONTROLLER.
12. CONTRACTOR SHALL CALL DIG SAFE AT LEAST 4 DAYS PRIOR TO STARTING CONSTRUCTION.



1777 East Old Hwy 40  
New Cambria, KS 67470  
Phone: 785.822.6640  
Web: www.lscnla.com  
Email: info@lscnla.com

CENTRAL KANSAS MENTAL HEALTH  
124 IOWA AVENUE  
SALINA, KANSAS 67401

Revisions

Date: SEPTEMBER 10, 2025  
Project Number:

Drawn By: GLS  
Checked By: GLS

Sheet Name: IRRIGATION PLAN

Sheet Number:

I1.0  
1 of 1