

1 BASEMENT PLAN
1/8" = 1'-0"

BASEMENT PLAN NOTES

- 1 SPALLED CONCRETE AND EXPOSED REBAR; REMOVE DELAMINATED AND DAMAGED CONCRETE TO SOUND CONCRETE. DEMO MUST PROVIDE 1" MINIMUM CLEAR ON ALL SIDES OF REBAR. CLEAN AND COAT ALL REBAR, THE WIRE, AND BAR SUPPORTS WITH SIKA ARMATEC 110 EPOC. PATCH WITH SIKAKRICK VOH REPAIR MORTAR. FOR FULL SLAB DEPTH REPAIRS USE SIKACRACK 100 CI CONCRETE MIX.
- 2 SPALLED CONCRETE; REMOVE DELAMINATED AND DAMAGED CONCRETE TO SOUND CONCRETE. PATCH WITH SIKAKRICK VOH REPAIR MORTAR.
- 3 REMOVE AND REPLACE LOOSE MASONRY UNITS.
- 5 REMOVE AND REPLACE HANDRAIL PER ARCHITECT'S SPECIFICATION.

ENGINEERING
ENGINEERING CONSULTANTS, P.A.

ENGINEERING CONSULTANTS
1227 NORTH MAIN STREET
P.O. BOX 932
HUTCHINSON, KS 67504-0932

P A
620-665-6394
www.engineering-consultants.com
info@engineering-consultants.com

CONSULTANTS
EC PROJECT # 22-228

LEE LOFTS, PHASE III, BUILDING 3
HISTORIC REHAB. (APARTMENTS, COMMERCIAL)
SALINA KANSAS

JonesGillamRenz
730 N. Ninth
Sallina, KS 67401
785.827.0386
1881 Main Street, Suite 301
Kansas City, MO 64108
jgr@jgrarchitects.com



REVISION:

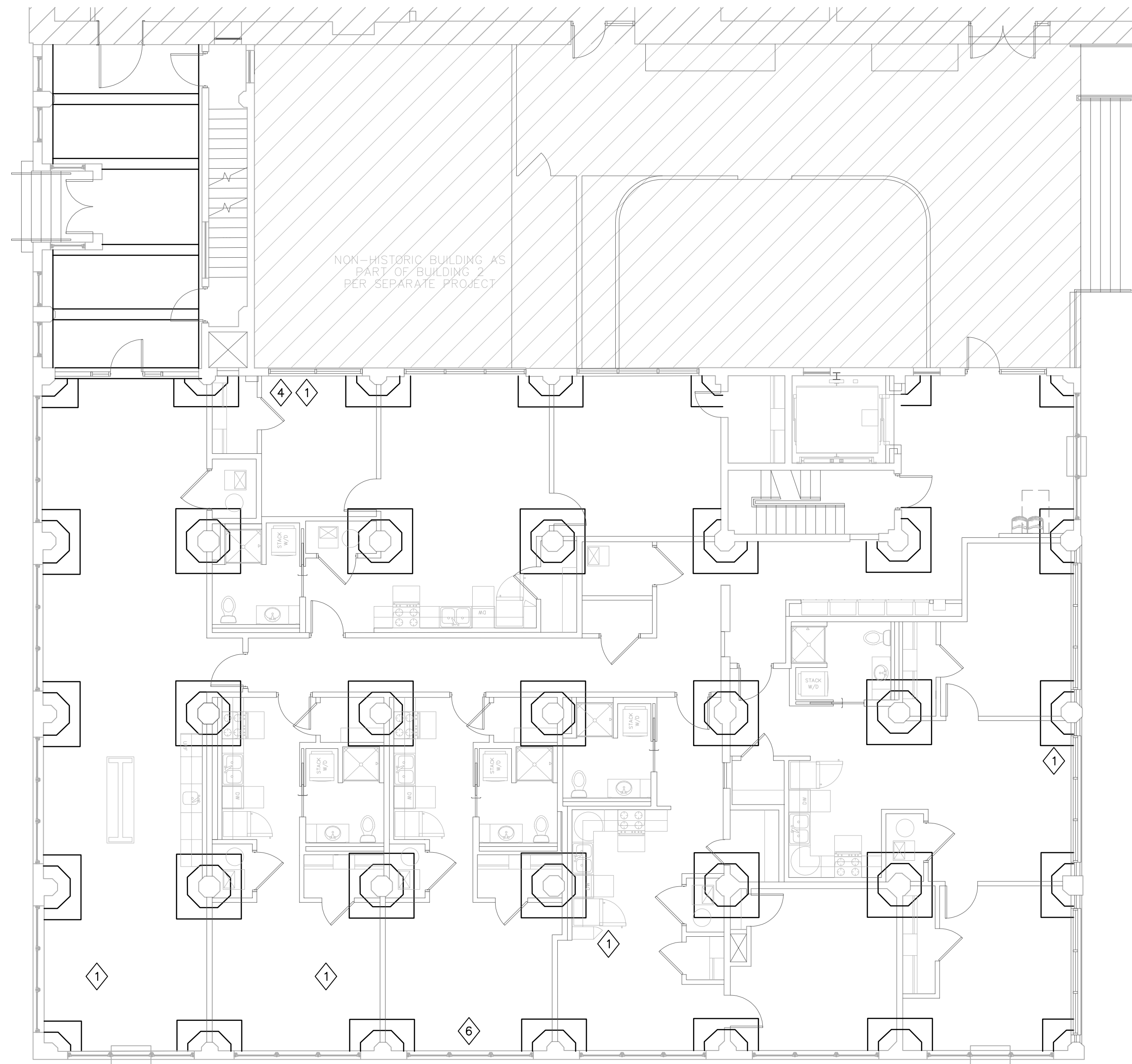
DATE: 9-19-2025

JOB: 22-3243

SHEET NO.:

S1.0

COPYRIGHT © 2011



1 FIRST FLOOR PLAN
1/8" = 1'-0"

PLAN NOTES

- A. EXPOSED CAST-IN CONDUIT; REMOVE DELAMINATED AND DAMAGED CONCRETE TO SOUND CONCRETE. DEMO MUST PROVIDE 1" MINIMUM CLEAR ON ALL SIDES OF CONDUIT. PATCH WITH SIKAGUICK VOH REPAIR MORTAR.
- B. CONCRETE HONEYCOMBED; REMOVE ALL LOOSE CONCRETE AND PATCH WITH SIKAGUICK VOH REPAIR MORTAR.
- C. OVERALL MASONRY CONDITION IS GOOD. CONTRACTOR TO VERIFY LOCATIONS OF CRACKS, VOIDS IN MORTAR, AND CRACKS THROUGH THE BRICK UNITS. LOCATION TO BE REPOINTED PER SPECIFICATIONS. REPLACE / RELOCATE MASONRY UNITS AS NEEDED. SEE SHEET S3.0 FOR EXAMPLES OF AREAS IN NEED OF REPOINTING.
- D. COORDINATE WITH MECHANICAL / PLUMBING DRAWINGS FOR ALL SLAB PENETRATIONS.

FIRST FLOOR PLAN NOTES

- 1 SPALLED CONCRETE AND EXPOSED REBAR; REMOVE DELAMINATED AND DAMAGED CONCRETE TO SOUND CONCRETE. DEMO MUST PROVIDE 1" MINIMUM CLEAR ON ALL SIDES OF REBAR. CLEAN AND COAT ALL REBAR, TIE WIRE, AND BAR SUPPORTS WITH SIKARMATEC 110 EPOCEM. PATCH WITH SIKAGUICK VOH REPAIR MORTAR. FOR FULL SLAB DEPTH REPAIRS USE SIKACRETE 100 C1 CONCRETE MIX.
- 4 VERIFY EXISTING PATCH REMAINS SOLID BY HAMMER SOUNDING METHOD. IF PATCH IS SOLID, NO REPAIR NEEDED. IF PATCH SHOWS SIGNS OF DELAMINATION REPAIR PER SPALLED CONCRETE REPAIR METHOD.
- 6 REMOVE DELAMINATED AND DAMAGED CONCRETE TO SOUND CONCRETE AT WINDOW SILL. PATCH WITH SIKAGUICK VOH REPAIR MORTAR.

LINTEL SCHEDULE			
MK NO.	LINTEL		REMARKS
	SIZE	PLATE OR ANGLE	
L-1	LL4X4X1/4	PL. 7"x1/4"	NOTE 1, 2, 3

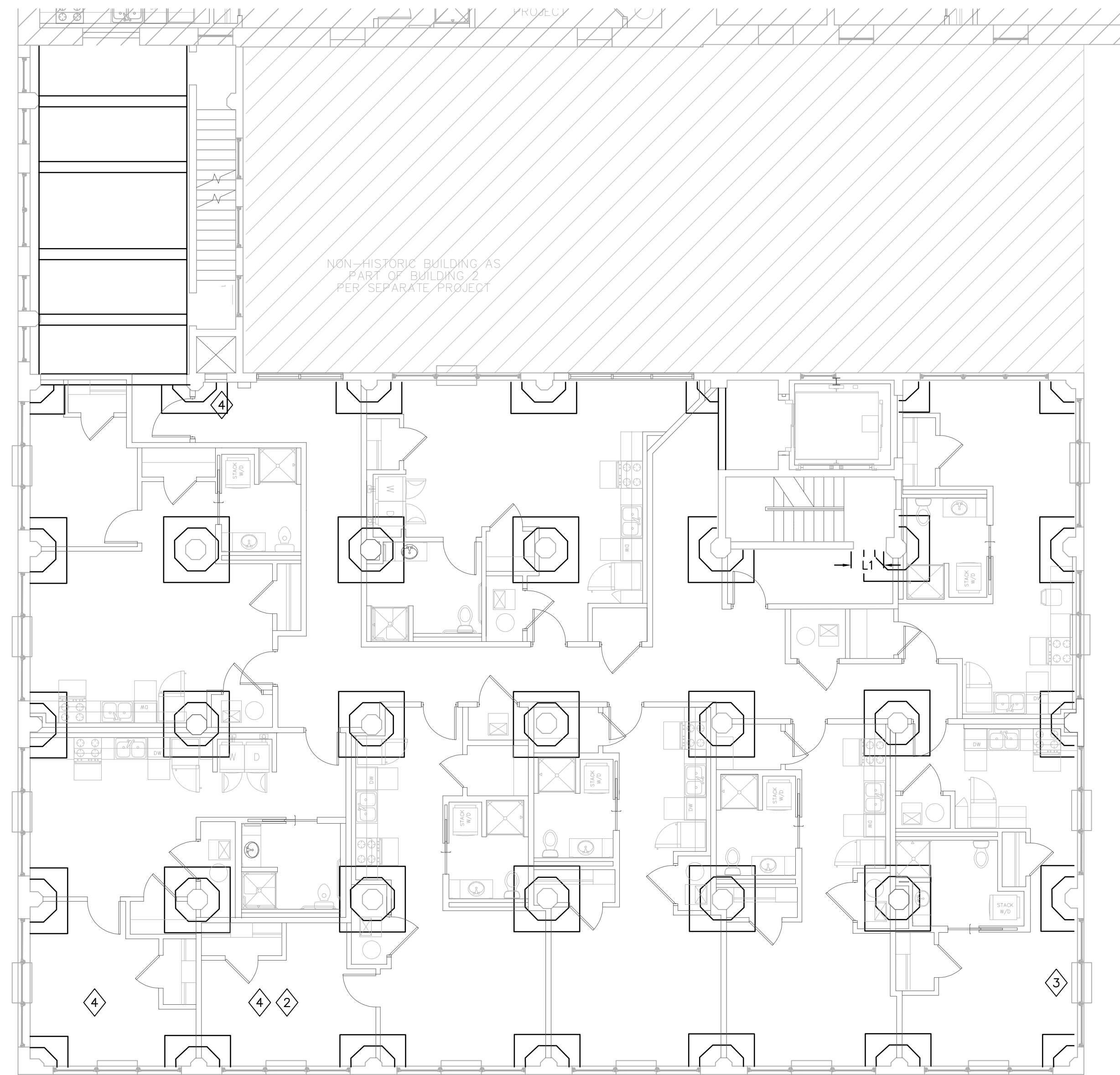
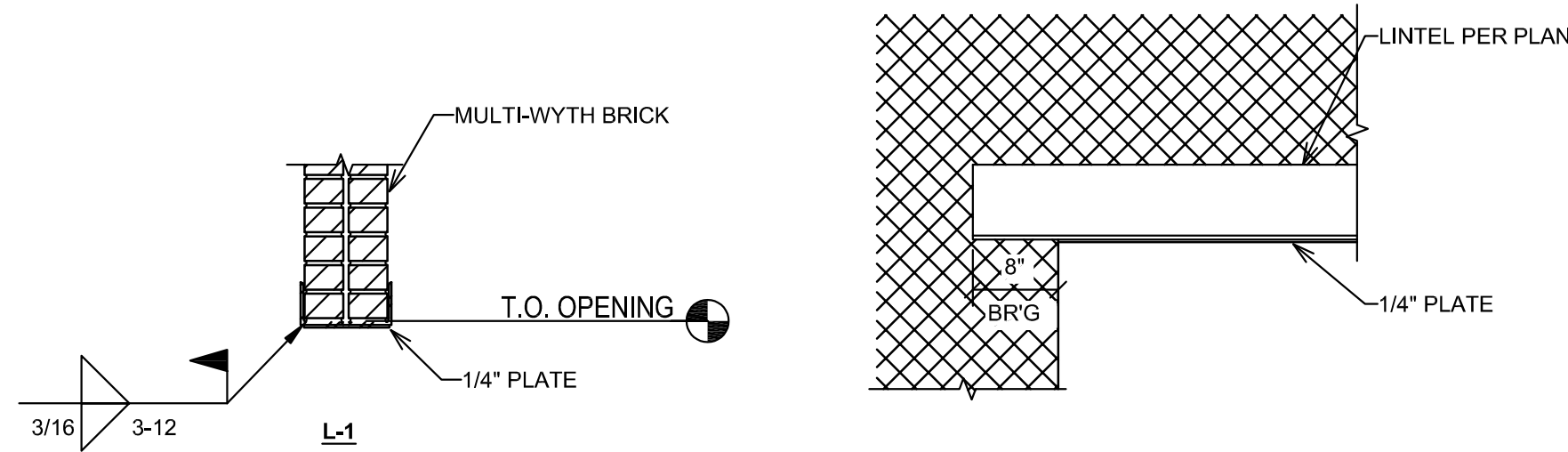
LINTEL SCHEDULE NOTES:

1. ALL STEEL LINTELS SHALL HAVE 8" MIN. BEARING EA SIDE OF OPENING.
2. ATTACH PLATE TO ANGLE WITH 3/16" 3"@12" FILLET WELD (EACH SIDE)
3. IF EXISTING LINTEL PRESENT. VERIFY CONDITION OF LINTEL TO REMAIN. IF POOR CONDITION REPLACE EXISTING LINTEL WITH NEW AS SHOWN.

PLAN NOTES

- A. EXPOSED CAST-IN CONDUIT: REMOVE DELAMINATED AND DAMAGED CONCRETE TO SOUND CONCRETE. DEMO MUST PROVIDE 1" MINIMUM CLEAR ON ALL SIDES OF CONDUIT. PATCH WITH SIKAGUICK VOH REPAIR MORTAR.
- B. CONCRETE HONEYCOMBED: REMOVE ALL LOOSE CONCRETE AND PATCH WITH SIKAGUICK VOH REPAIR MORTAR.
- C. OVERALL MORTAR CONDITION IS GOOD. CONTRACTOR TO VERIFY LOCATIONS OF CRACKS, VOIDS IN MORTAR, AND CRACKS THROUGH THE BRICK UNITS. LOCATION TO BE REPOINTED PER SPECIFICATIONS. REPLACE / RELOCATE MORTAR UNITS AS NEEDED. SEE SHEET 53.0 FOR EXAMPLES OF AREAS IN NEED OF REPOINTING.
- D. COORDINATE WITH MECHANICAL / PLUMBING DRAWINGS FOR ALL SLAB PENETRATIONS.

SECOND FLOOR PLAN NOTES	
2	SPALLED CONCRETE: REMOVE DELAMINATED AND DAMAGED CONCRETE TO SOUND CONCRETE. PATCH WITH SIKAGUICK VOH REPAIR MORTAR.
3	REMOVE AND REPLACE LOOSE MASONRY UNITS.
4	VERIFY EXISTING PATCH REMAINS SOLID BY HAMMER SOUNDING METHOD. IF PATCH IS SOLID, NO REPAIR NEEDED. IF PATCH SHOWS SIGNS OF DELAMINATION REPAIR PER SPALLED CONCRETE REPAIR METHOD.



1 SECOND FLOOR PLAN
1/8" = 1'-0"

ENGINEERING

ENGINEERING CONSULTANTS, P.A.

1227 NORTH MAIN STREET
P.O. BOX 932
HUTCHINSON, KS 67504-0932

www.engineering-consultants.com
info@engineering-consultants.com

PA.

CONSULTANTS

EC PROJECT # 22228

LEE LOFTS, PHASE III, BUILDING 3
HISTORIC REHAB. (APARTMENTS, COMMERCIAL)
SALINA KANSAS

REVISION:

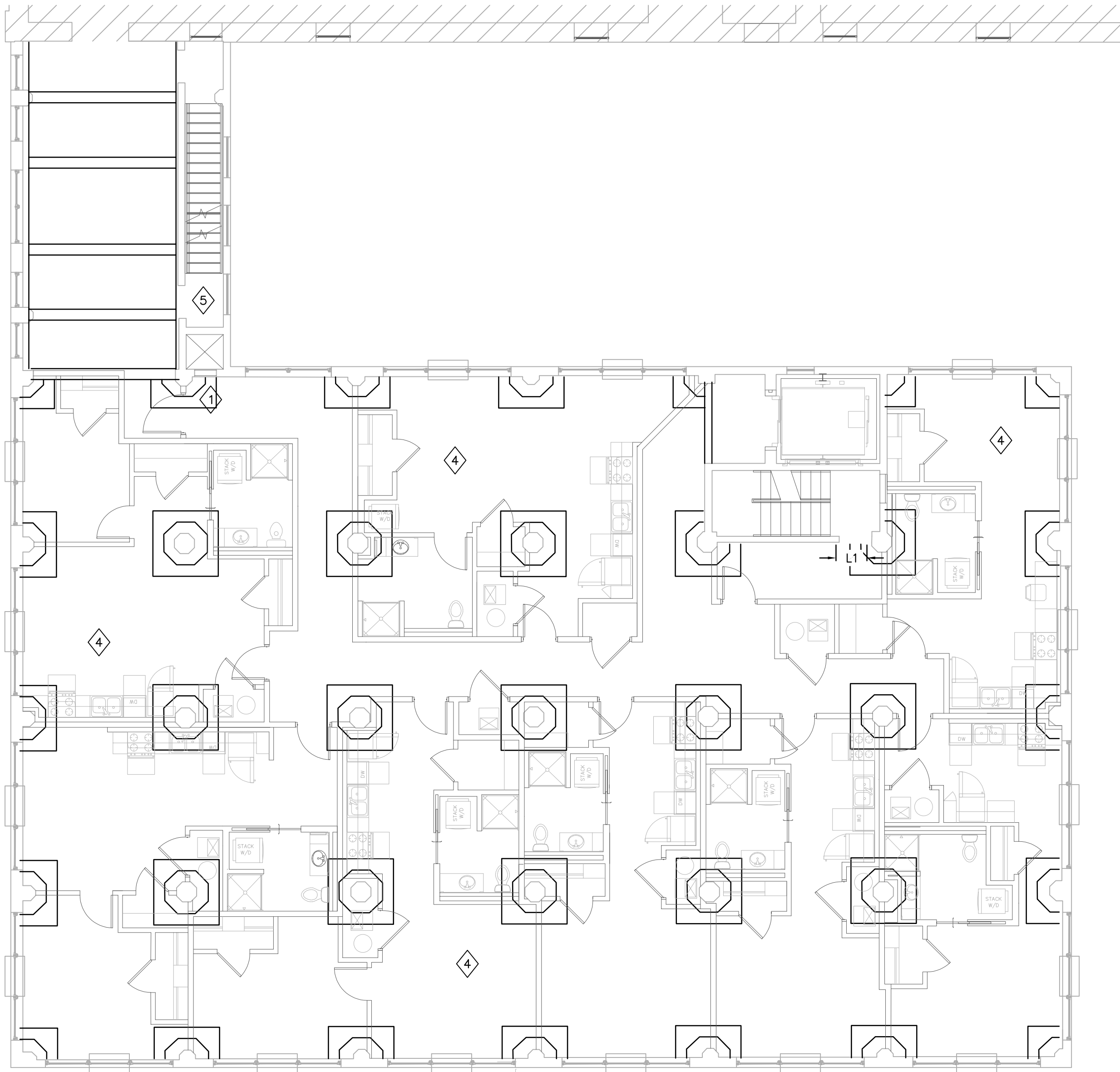
DATE: 9-19-2025

JOB: 22-3243

SHEET NO.:

S1.2

COPYRIGHT ©



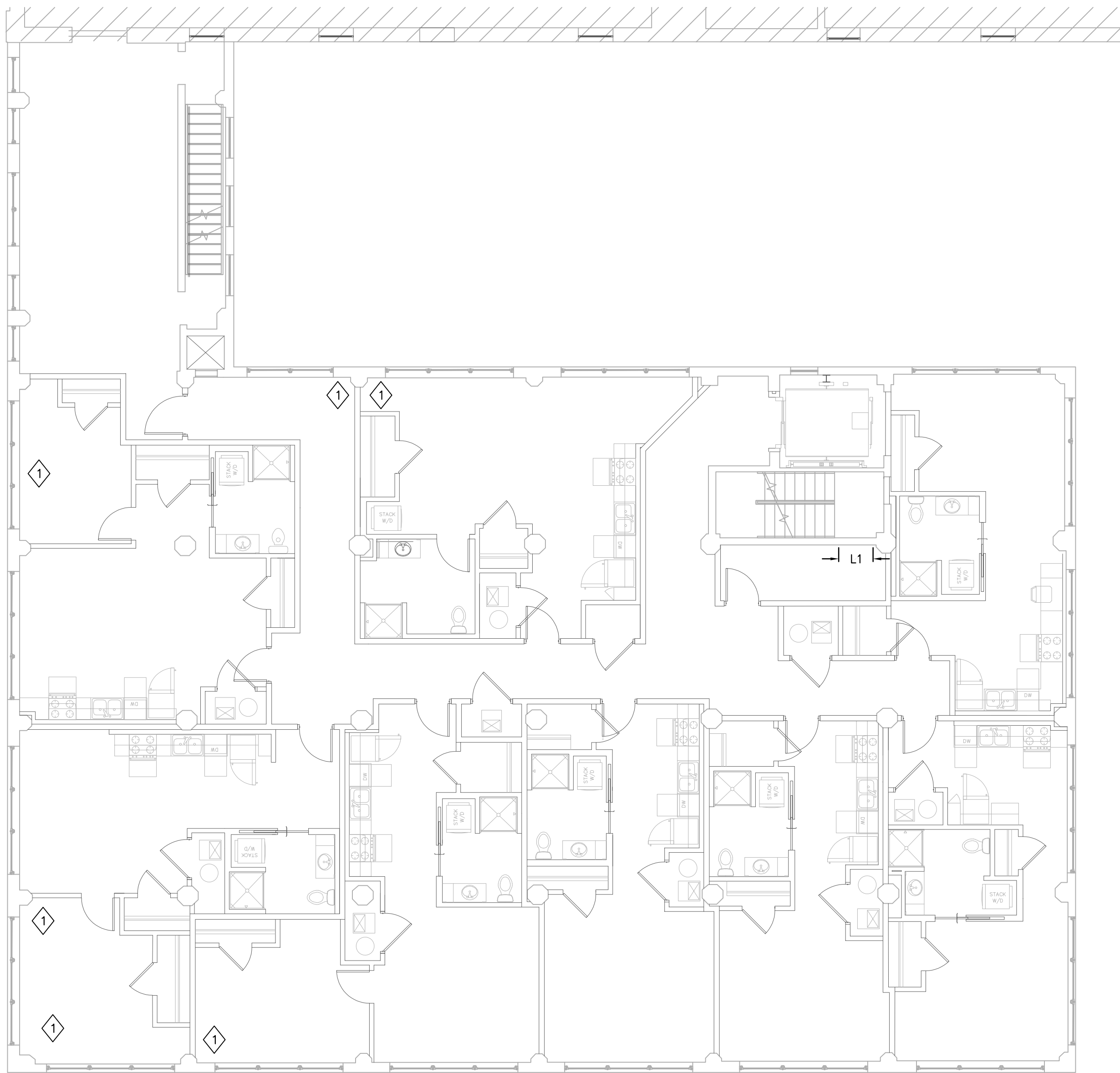
1 THIRD FLOOR PLAN
1/8" = 1'-0"

PLAN NOTES

- A. EXPOSED CAST-IN CONDUIT; REMOVE DELAMINATED AND DAMAGED CONCRETE TO SOUND CONCRETE. DEMO MUST PROVIDE 1" MINIMUM CLEAR ON ALL SIDES OF CONDUIT. PATCH WITH SIKAGUICK VOH REPAIR MORTAR.
- B. CONCRETE HONEYCOMBED; REMOVE ALL LOOSE CONCRETE AND PATCH WITH SIKAGUICK VOH REPAIR MORTAR.
- C. OVERALL MASONRY CONDITION IS GOOD. CONTRACTOR TO VERIFY LOCATIONS OF CRACKS, VOIDS IN MORTAR, AND CRACKS THROUGH THE BRICK UNITS. LOCATION TO BE REPOINTED PER SPECIFICATIONS. REPLACE / RELOCATE MASONRY UNITS AS NEEDED. SEE SHEET S3.0 FOR EXAMPLES OF AREAS IN NEED OF REPOINTING.
- D. COORDINATE WITH MECHANICAL / PLUMBING DRAWINGS FOR ALL SLAB PENETRATIONS.

THIRD FLOOR PLAN NOTES

- 1 SPALLED CONCRETE AND EXPOSED REBAR; REMOVE DELAMINATED AND DAMAGED CONCRETE TO SOUND CONCRETE. DEMO MUST PROVIDE 1" MINIMUM CLEAR ON ALL SIDES OF REBAR. CLEAN AND COAT ALL REBAR, TIE WIRE, AND BAR SUPPORTS WITH SIKAGUICK 110 EPOCEM. PATCH WITH SIKAGUICK VOH REPAIR MORTAR. FOR FULL SLAB DEPTH REPAIRS USE SIKACRETE 100 C1 CONCRETE MIX.
- 4 VERIFY EXISTING PATCH REMAINS SOLID BY HAMMER SOUNDING METHOD. IF PATCH IS SOLID, NO REPAIR NEEDED. IF PATCH SHOWS SIGNS OF DELAMINATION REPAIR PER SPALLED CONCRETE REPAIR METHOD.
- 5 REMOVE AND REPLACE HANDRAIL PER ARCHITECT'S SPECIFICATION.



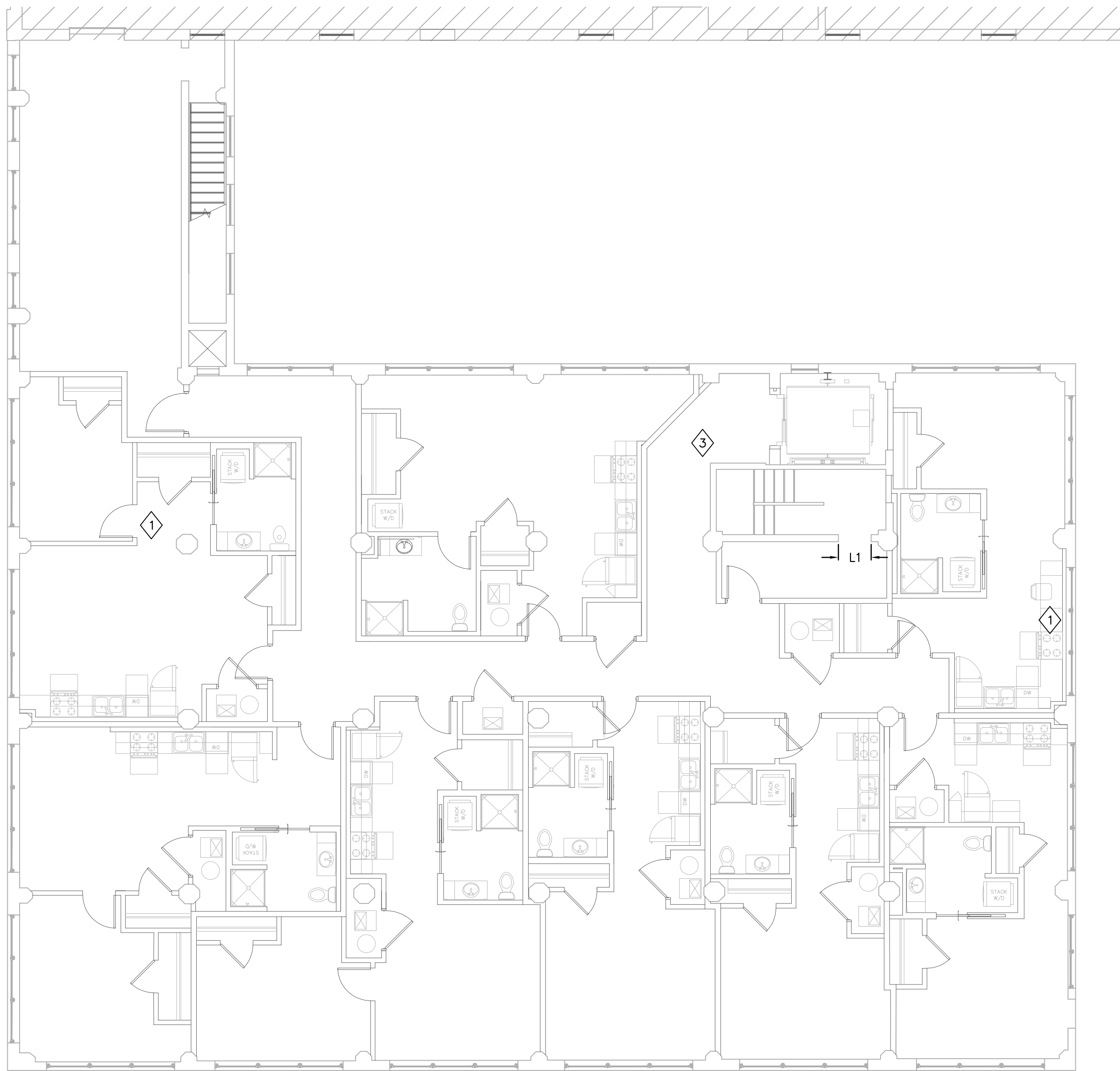
1 FOURTH FLOOR PLAN
1/8" = 1'-0"

PLAN NOTES

- A. EXPOSED CAST-IN CONDUIT; REMOVE DELAMINATED AND DAMAGED CONCRETE TO SOUND CONCRETE. DEMO MUST PROVIDE 1" MINIMUM CLEAR ON ALL SIDES OF CONDUIT. PATCH WITH SIKAGUICK VOH REPAIR MORTAR.
- B. CONCRETE HONEYCOMBED; REMOVE ALL LOOSE CONCRETE AND PATCH WITH SIKAGUICK VOH REPAIR MORTAR.
- C. OVERALL MASONRY CONDITION IS GOOD. CONTRACTOR TO VERIFY LOCATIONS OF CRACKS, VOIDS IN MORTAR, AND CRACKS THROUGH THE BRICK UNITS. LOCATION TO BE REPOINTED PER SPECIFICATIONS. REPLACE / RELOCATE MASONRY UNITS AS NEEDED. SEE SHEET S3.0 FOR EXAMPLES OF AREAS IN NEED OF REPOINTING.
- D. COORDINATE WITH MECHANICAL / PLUMBING DRAWINGS FOR ALL SLAB PENETRATIONS.

FOURTH FLOOR PLAN NOTES

- 1 SPALLED CONCRETE AND EXPOSED REBAR; REMOVE DELAMINATED AND DAMAGED CONCRETE TO SOUND CONCRETE. DEMO MUST PROVIDE 1" MINIMUM CLEAR ON ALL SIDES OF REBAR. CLEAN AND COAT ALL REBAR, TIE WIRE, AND BAR SUPPORTS WITH SIKAGUICK 110 EPOCEM. PATCH WITH SIKAGUICK VOH REPAIR MORTAR. FOR FULL SLAB DEPTH REPAIRS USE SIKACRETE 100 C1 CONCRETE MIX.



1 FIFTH FLOOR PLAN
1/8" = 1'-0"

PLAN NOTES

- A. EXPOSED CAST-IN CONDUIT; REMOVE DELAMINATED AND DAMAGED CONCRETE TO SOUND CONCRETE. DEMO MUST PROVIDE 1" MINIMUM CLEAR ON ALL SIDES OF CONDUIT. PATCH WITH SIKAQUICK VOH REPAIR MORTAR.
- B. CONCRETE HONEYCOMBED; REMOVE ALL LOOSE CONCRETE AND PATCH WITH SIKAQUICK VOH REPAIR MORTAR.
- C. OVERALL MASONRY CONDITION IS GOOD. CONTRACTOR TO VERIFY LOCATIONS OF CRACKS, VOIDS IN MORTAR, AND CRACKS THROUGH THE BRICK UNITS. LOCATION TO BE REPOINTED PER SPECIFICATIONS. REPLACE / RELOCATE MASONRY UNITS AS NEEDED. SEE SHEET S3.0 FOR EXAMPLES OF AREAS IN NEED OF REPOINTING.
- D. COORDINATE WITH MECHANICAL / PLUMBING DRAWINGS FOR ALL SLAB PENETRATIONS.

FIFTH FLOOR PLAN NOTES

- 1 SPALLED CONCRETE AND EXPOSED REBAR; REMOVE DELAMINATED AND DAMAGED CONCRETE TO SOUND CONCRETE. DEMO MUST PROVIDE 1" MINIMUM CLEAR ON ALL SIDES OF REBAR. CLEAN AND COAT ALL REBAR, TIE WIRE, AND BAR SUPPORTS WITH SIKARMATEC 110 EPOCEM. PATCH WITH SIKAQUICK VOH REPAIR MORTAR. FOR FULL SLAB DEPTH REPAIRS USE SIKACRETE 100 C1 CONCRETE MIX.
- 3 REMOVE AND REPLACE LOOSE MASONRY UNITS.

ENGINEERING CONSULTANTS, P.A.
1227 NORTH MAIN STREET
P.O. BOX 932
HUTCHINSON, KS 67504-0932
www.jonesgillamrenz.com
info@jonesgillamrenz.com

PA
CONSULTANTS
LICENSE NO. 12281

LEE LOFTS, PHASE III, BUILDING 3
HISTORIC REHAB. (APARTMENTS, COMMERCIAL)
SALINA KANSAS



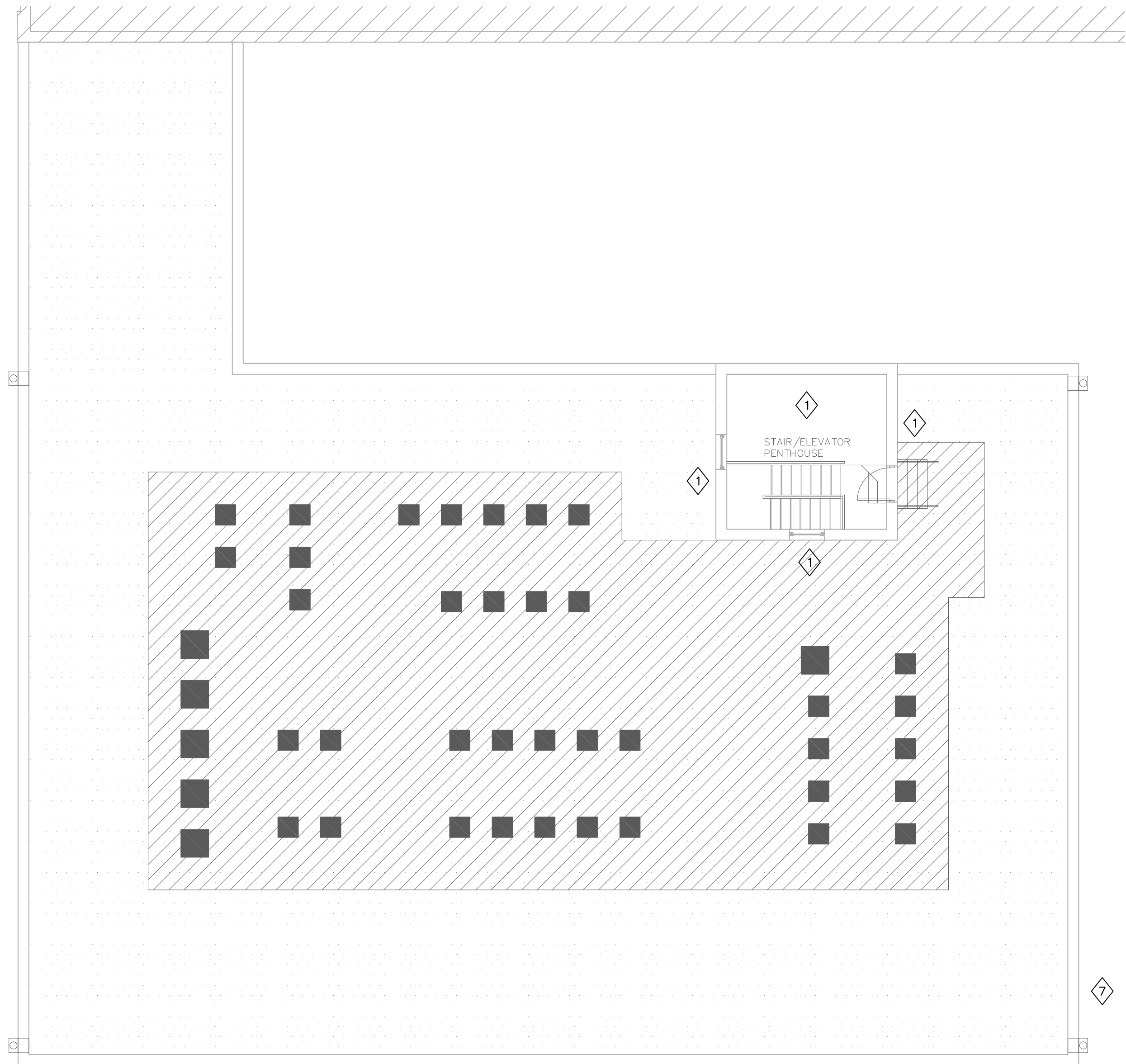
REVISION:	
DATE:	9-19-2025
JOB:	22-3243
SHEET NO.:	

S1.5

JonesGillamRenz
1881 Main Street, Suite 301
Kansas City, MO 64108
jgr@jgrarchitects.com

730 N. Ninth
Salina, KS 67401
785.827.0386





1 ROOF PLAN
1/8" = 1'-0"

PLAN NOTES

- A. MASONRY CONDITION IS GOOD AT DOG HOUSE. CONTRACTOR TO VERIFY LOCATIONS OF CRACKS, VOIDS IN MORTAR, AND CRACKS THROUGH THE BRICK UNITS. LOCATION TO BE REPOINTED PER SPECIFICATIONS. REPLACE / RELOCATE MASONRY UNITS AS NEEDED. SEE SHEET S3.0 FOR EXAMPLES OF AREAS IN NEED OF REPOINTING.
- B. PARAPET TO BE REPOINTED IN ITS ENTIRETY. REPOINT PER SPECIFICATIONS. REPLACE / RELOCATE MASONRY UNITS AS NEEDED.

ROOF PLAN NOTES

- 1 SPALLED CONCRETE AND EXPOSED REBAR; REMOVE DELAMINATED AND DAMAGED CONCRETE TO SOUND CONCRETE. DEMO MUST PROVIDE 1" MINIMUM CLEAR ON ALL SIDES OF REBAR. CLEAN AND COAT ALL REBAR, TIE WIRE, AND BAR SUPPORTS WITH SIKA ARMATEC 110 EPOCEM. PATCH WITH SIKAQUICK VOH REPAIR MORTAR. FOR FULL SLAB DEPTH REPAIRS USE SIKACRETE 100 C1 CONCRETE MIX.
- 2 INSUFFICIENT LADDER AT ROOF. REPLACE WITH ADEQUATE LADDER SYSTEM.

ENGINEERING CONSULTANTS, P.A.
1227 NORTH MAIN STREET
P.O. BOX 932
HOTCHINSON, KS 67304-0932
www.jonesgillamrenz.com
info@jonesgillamrenz.com

JONES GILLAM RENZ
CONSULTANTS
P.A.
730 N. Ninth
Salina, KS 67401
785.827.0386

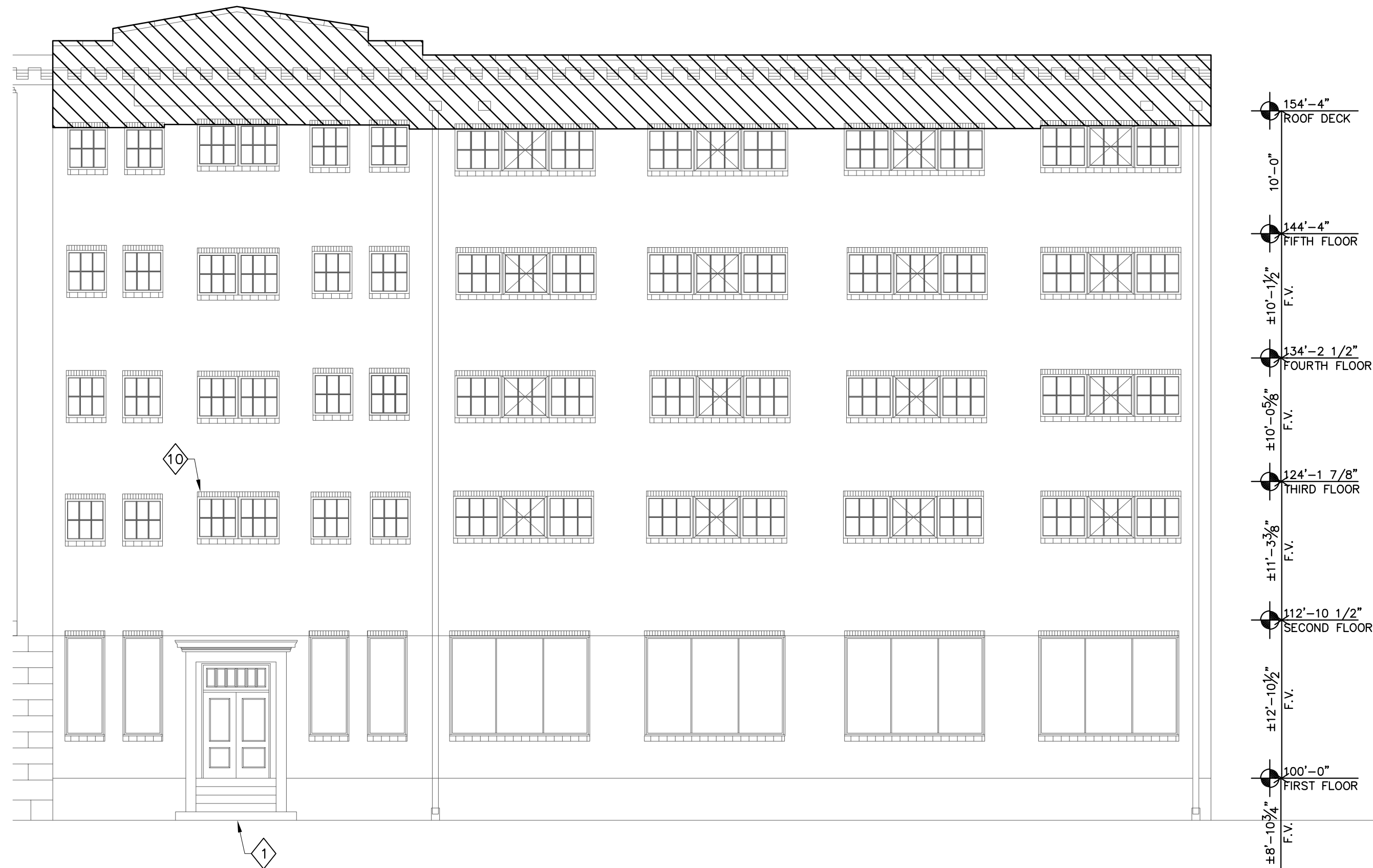
LEE LOFTS, PHASE III, BUILDING 3
HISTORIC REHAB. (APARTMENTS, COMMERCIAL)
SALINA KANSAS



REVISION:	
DATE:	9-19-2025
JOB:	22-3243
SHEET NO.:	



1 EAST ELEVATION
1/8" = 1'-0"



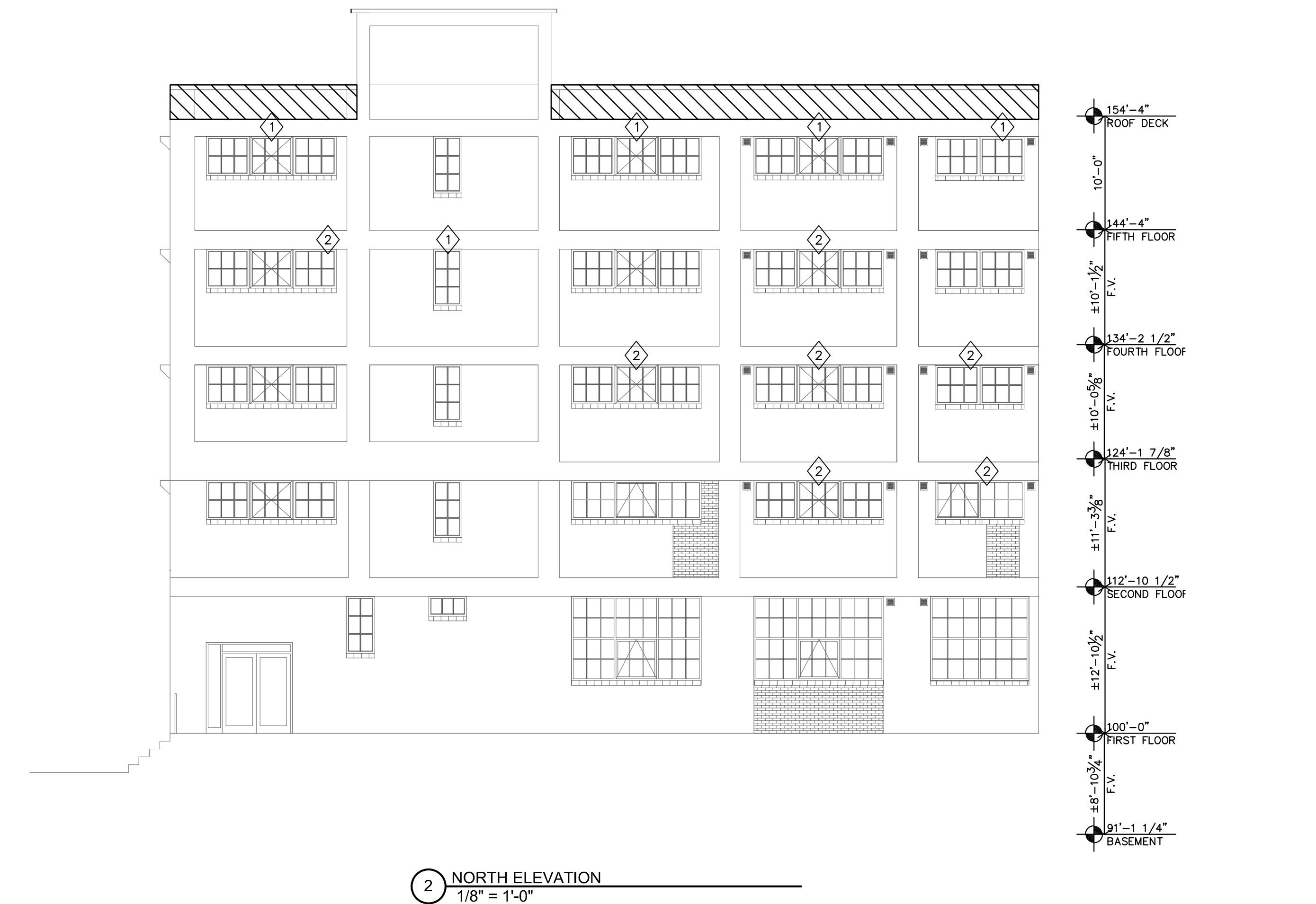
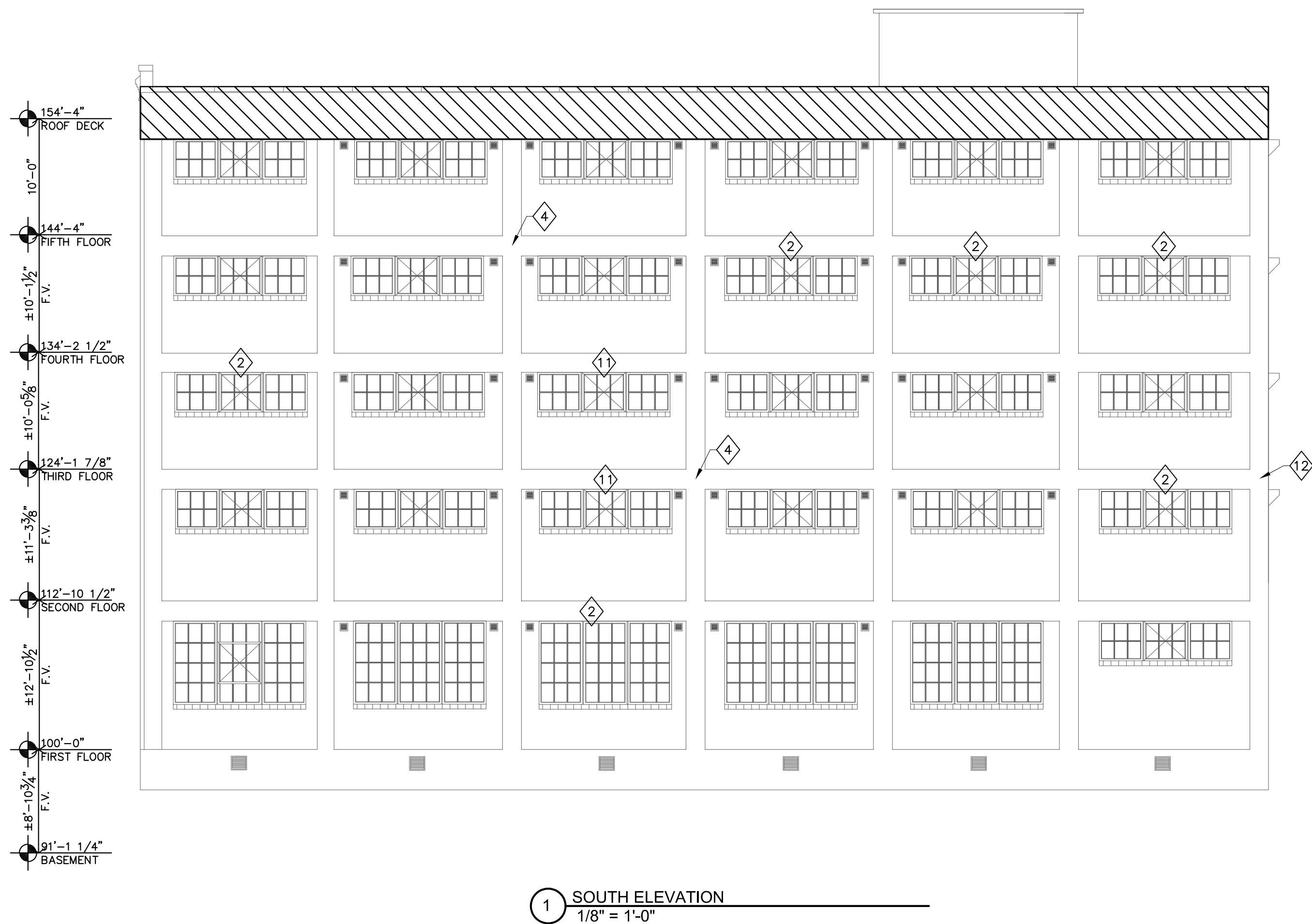
2 WEST ELEVATION
1/8" = 1'-0"

PLAN NOTES

- CUT REBAR EXTENDING OUT FROM THE FACE OF BUILDING.
- REPOINT ALL WINDOW SILLS PER REPOINTING SPECIFICATIONS.
- HATCH PATTERN INDICATES AREA OF REPOINTING REPAIR OF PARAPET. REPOINT PER SPECIFICATIONS. REPLACE / RELOCATE MASONRY UNITS AS NEEDED.

MASONRY NOTES

- SPALLED CONCRETE AND EXPOSED REBAR; REMOVE DELAMINATED AND DAMAGED CONCRETE TO SOUND CONCRETE. DEMO MUST PROVIDE 1" MINIMUM CLEAR ON ALL SIDES OF REBAR. CLEAN AND COAT ALL REBAR, TIE WIRE, AND BAR SUPPORTS WITH SIKA ARMATEC 110 EPOCEM. PATCH WITH SIKAQUICK VOH REPAIR MORTAR. FOR FULL SLAB DEPTH REPAIRS USE SIKACRETE 100 C1 CONCRETE MIX.
- INSUFFICIENT LADDER AT ROOF. REPLACE WITH ADEQUATE LADDER SYSTEM.
- REPAIR WINDOW SILL TO ORIGINAL CONDITION.
- INFILL MISSING MASONRY UNITS AT PREVIOUS LOWER ROOF LEVEL.
- REPLACE BROKEN MASONRY UNITS ABOVE WINDOW.



PLAN NOTES

A. REPOINT ALL WINDOW SILLS PER REPOINTING SPECIFICATIONS.

B. HATCH PATTERN INDICATES AREA OF REPOINTING REPAIR OF PARAPET. REPOINT PER SPECIFICATIONS. REPLACE / RELOCATE MASONRY UNITS AS NEEDED.

MASONRY NOTES

1 SPALLED CONCRETE AND EXPOSED REBAR; REMOVE DELAMINATED AND DAMAGED CONCRETE TO SOUND CONCRETE. DEMO MUST PROVIDE 1" MINIMUM CLEAR ON ALL SIDES OF REBAR. CLEAN AND COAT ALL REBAR, TIE WIRE, AND BAR SUPPORTS WITH SIKARMATEC 110 EPOCEM. PATCH WITH SIKAGUICK VOH REPAIR MORTAR. FOR FULL SLAB DEPTH REPAIRS USE SIKACRETE 100 C1 CONCRETE MIX.

2 SPALLED CONCRETE; REMOVE DELAMINATED AND DAMAGED CONCRETE TO SOUND CONCRETE. PATCH WITH SIKAGUICK VOH REPAIR MORTAR.

4 VERIFY EXISTING PATCH REMAINS SOLID BY HAMMER SOUNDING METHOD. IF PATCH IS SOLID, NO REPAIR NEEDED. IF PATCH SHOWS SIGNS OF DELAMINATION REPAIR PER SPALLED CONCRETE REPAIR METHOD.

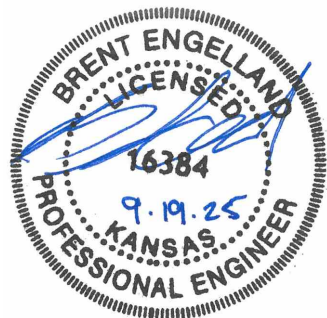
11 EPOXY INJECT CONCRETE CRACKS WITH KEMKO EPOXY.

12 CONCRETE HONEYCOMBED. REMOVE ALL LOOSE CONCRETE AND PATCH WITH SIKAGUICK VOH REPAIR MORTAR.

ENGINEERING CONSULTANTS, P.A.
1227 NORTH MAIN STREET
P.O. BOX 932
POTTERSON, KS 67504-0932
www.jonesgillamrenz.com
info@jonesgillamrenz.com

PA
CONSULTANTS
LICENSED PROFESSIONAL ENGINEER
KANSAS
16384
9.9.25

LEE LOFTS, PHASE III, BUILDING 3
HISTORIC REHAB. (APARTMENTS, COMMERCIAL)
SALINA KANSAS



REVISION:

DATE: 9-19-2025
JOB: 22-3243
SHEET NO.:

S2.1

JonesGillamRenz
1881 Main Street, Suite 301
Kansas City, MO 64108
785.827.0386
jgr@jgrarchitects.com

JGR

COPYRIGHTED ©

