



Jones Gillam Renz Architects

Address

730 N 9th St.
Salina, KS 67401

1881 Main St., Suite 301
Kansas City, MO 64108

Contact

jgr@jgrarchitects.com
(785) 827-0386

Web

jgrarchitects.com

ARCHITECT'S SUPPLEMENTAL INSTRUCTIONS

JONES GILLAM RENZ DOCUMENT JGR 710

PROJECT:	The Temple Elevator Rehabilitation Project Salina, KS	Report No.	One (1)
OWNER:	Salina Innovation Foundation Mary Landes, Director 336 S. Santa Fe Ave Salina, KS 67401	Date	October 8, 2025
CONTRACTOR:	Ponton Construction 1325 Armory Rd. Salina KS 67401	Architect's Proj No.	25-3499
		Contract For:	General Construction Mechanical, Electrical

The work shall be carried out in accordance with the following supplemental instructions issued in accordance with the Contract Documents without change in Contract Sum or Contract Time. Prior to proceeding in accordance with these instructions, indicate your acceptance of these instructions for minor change to the Work as consistent with the Contract Documents and return a copy to the Architect.

DESCRIPTION:

- 1) Contractor to make adjustments as needed and required per the modifications as indicated on attached drawings and in the below descriptions:
 - a. Clarification provided – Detail A showing the fire-rated wall assembly encasing existing beams within the shaft.

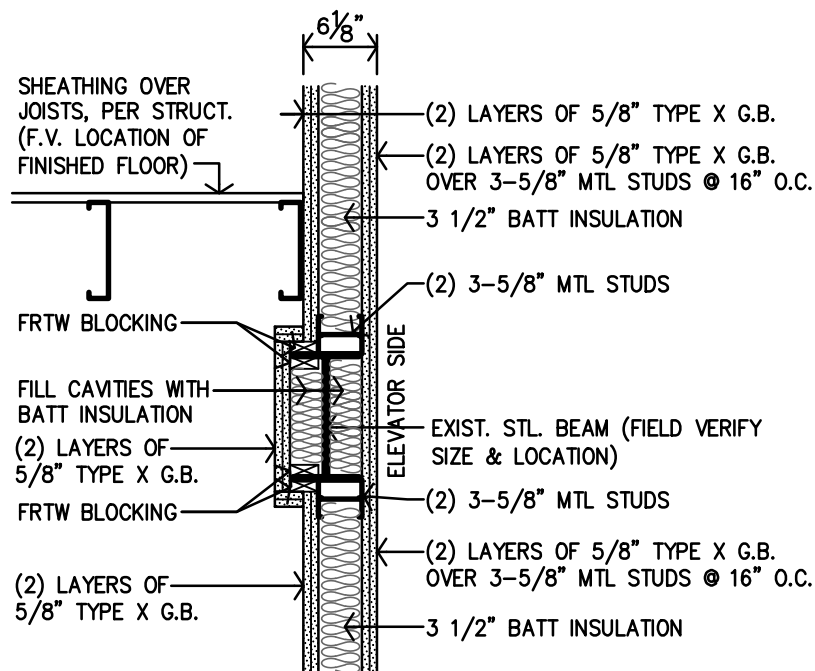
Attachments:

1. Supplementary Drawing ASI 1 (8.5x11)

Issued by:	Jones Gillam Renz Architects PO Box 2928, Salina, KS 67402 Maggie Gillam, Project Architect 785 827 0386	mgillam@jgrarchitects.com
------------	---	--

Copies to:

Ponton Construction
The Temple – Mary Landes, Steve Renich
LST – Justyn Leon
Structural (EC) – Brian Shenk



A **DETAIL @ STL BEAM & FIRE-RATED WALL** 3/4"=1'-0"